

# MBTA Contract H62CN02

## MBTA Board Meeting 2/10/16



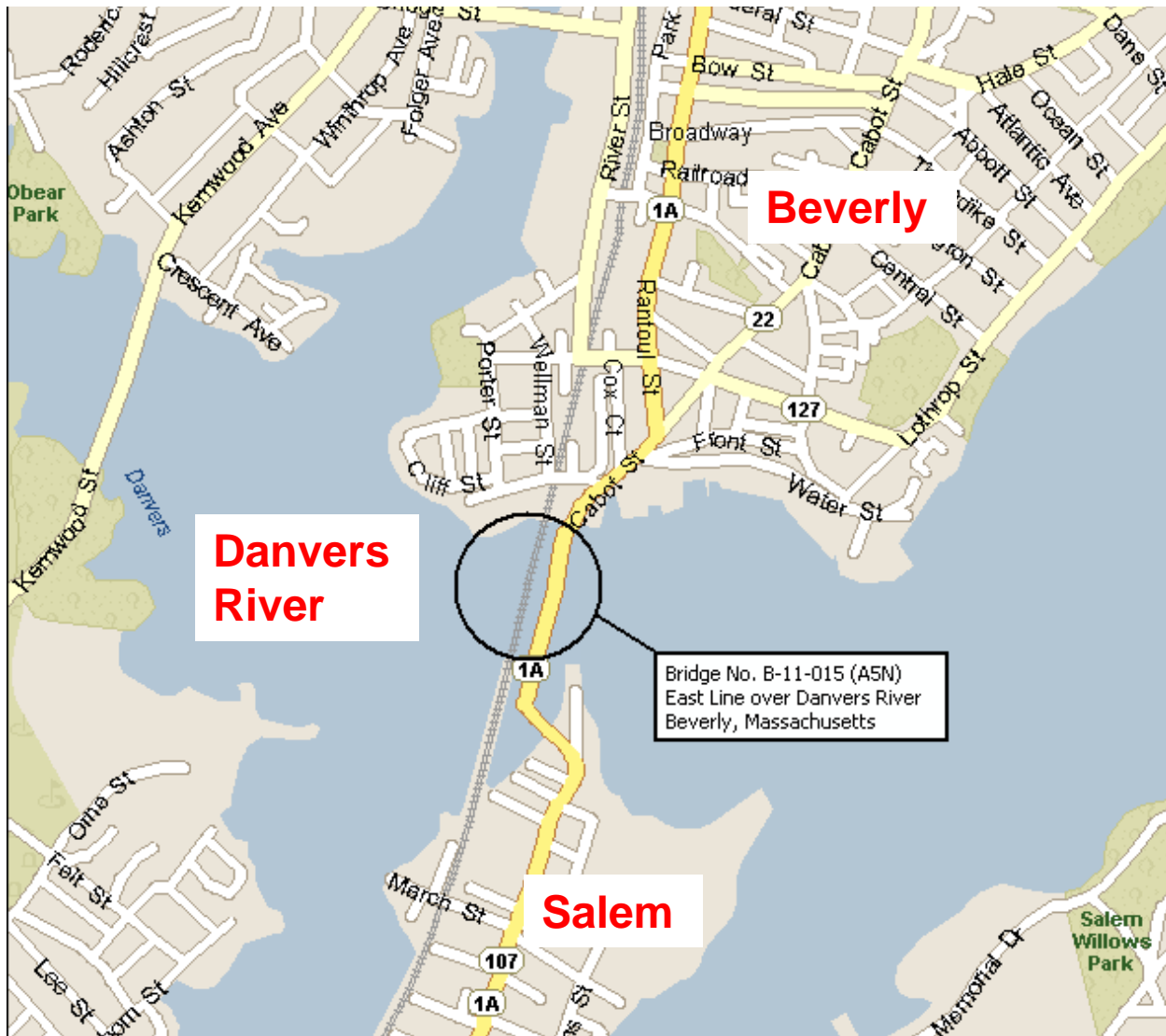
**Newburyport and Rockport Line over Danvers River  
Beverly Draw (B-11-015)  
Beverly/Salem**

# Purpose of Presentation

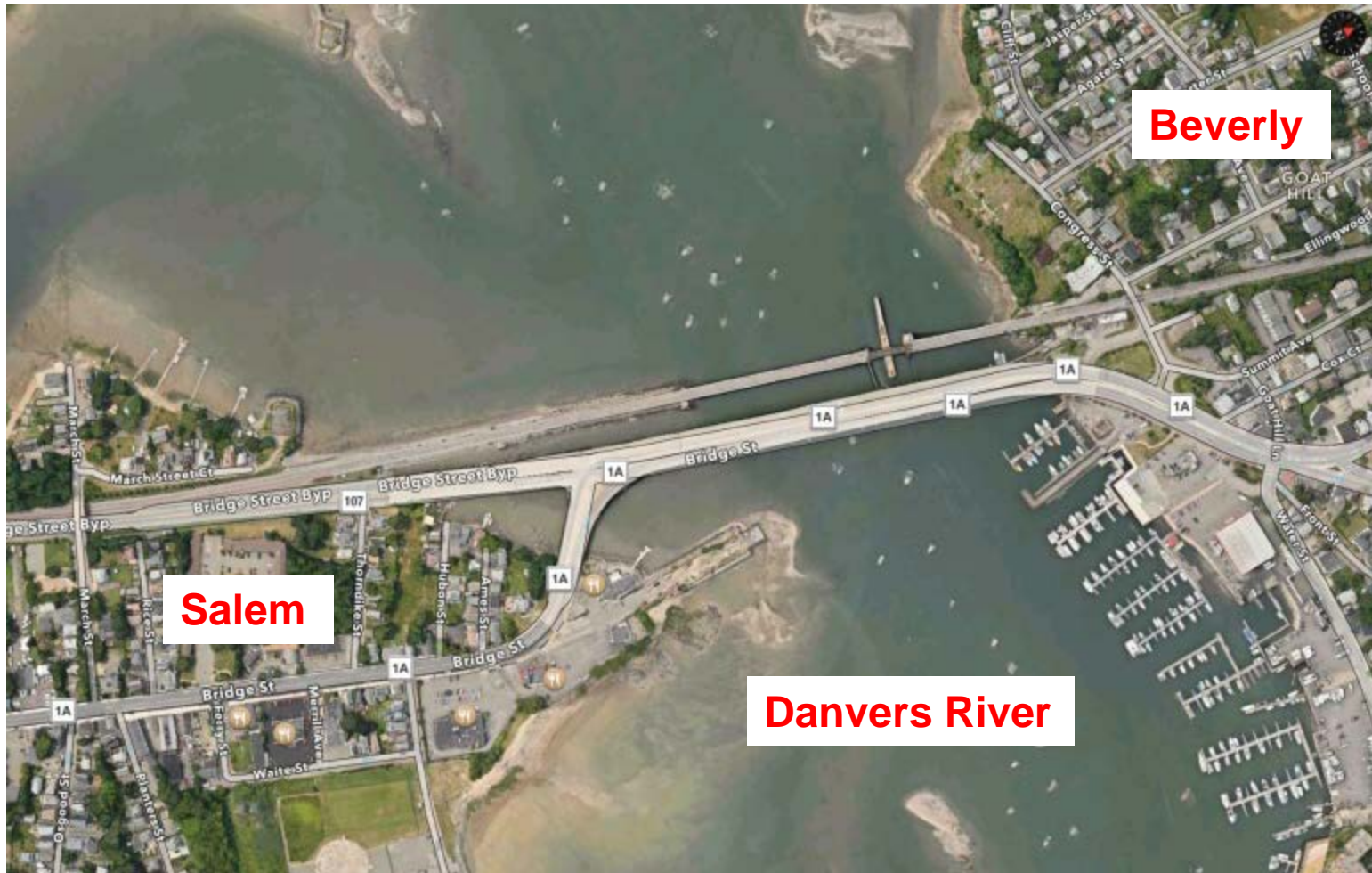
- ❖ Award Construction Contract H62CN02 to J.F. White Contracting Co. for \$16,177,594.



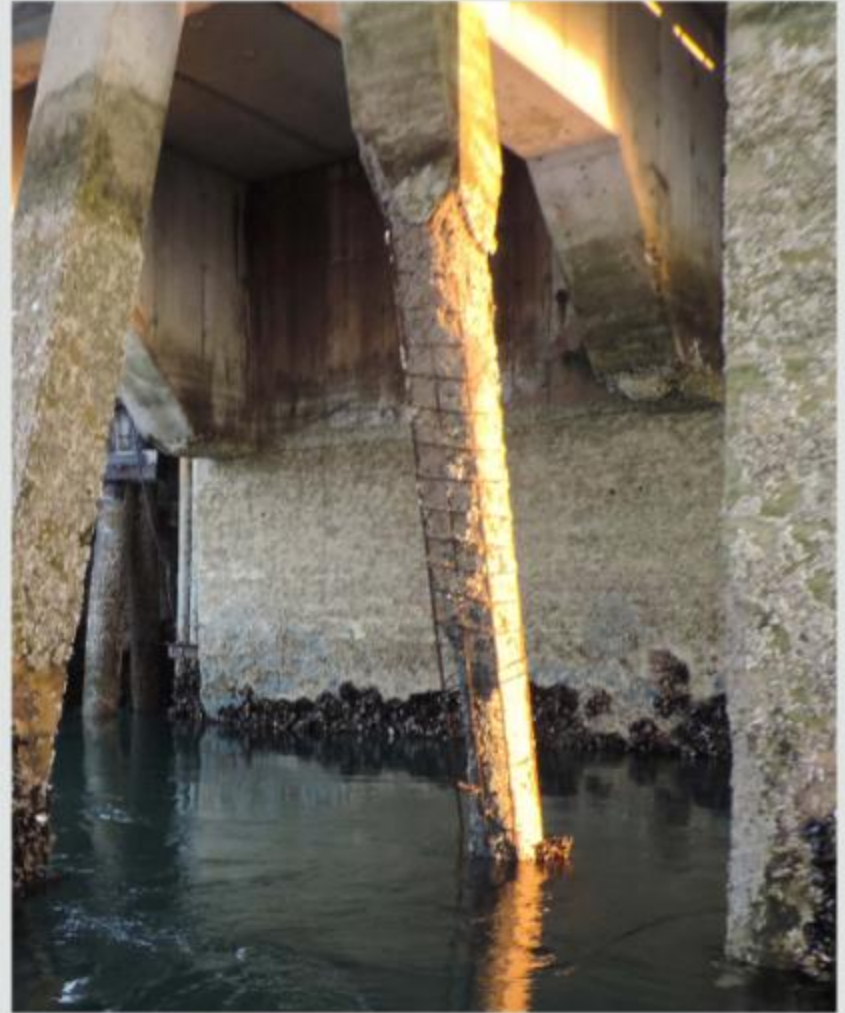
# Location Map – Beverly Draw Newburyport and Rockport Line



# Existing Site Plan



# Existing Concrete Pile Deterioration at Approach Spans (Piles renovated in 1985 after extensive damage from fire)



EXISTING CONCRETE PILES

# Repaired Concrete Piles at Approach Spans Utilizing Emergency Repairs Contract



REPAIRED CONCRETE PILES

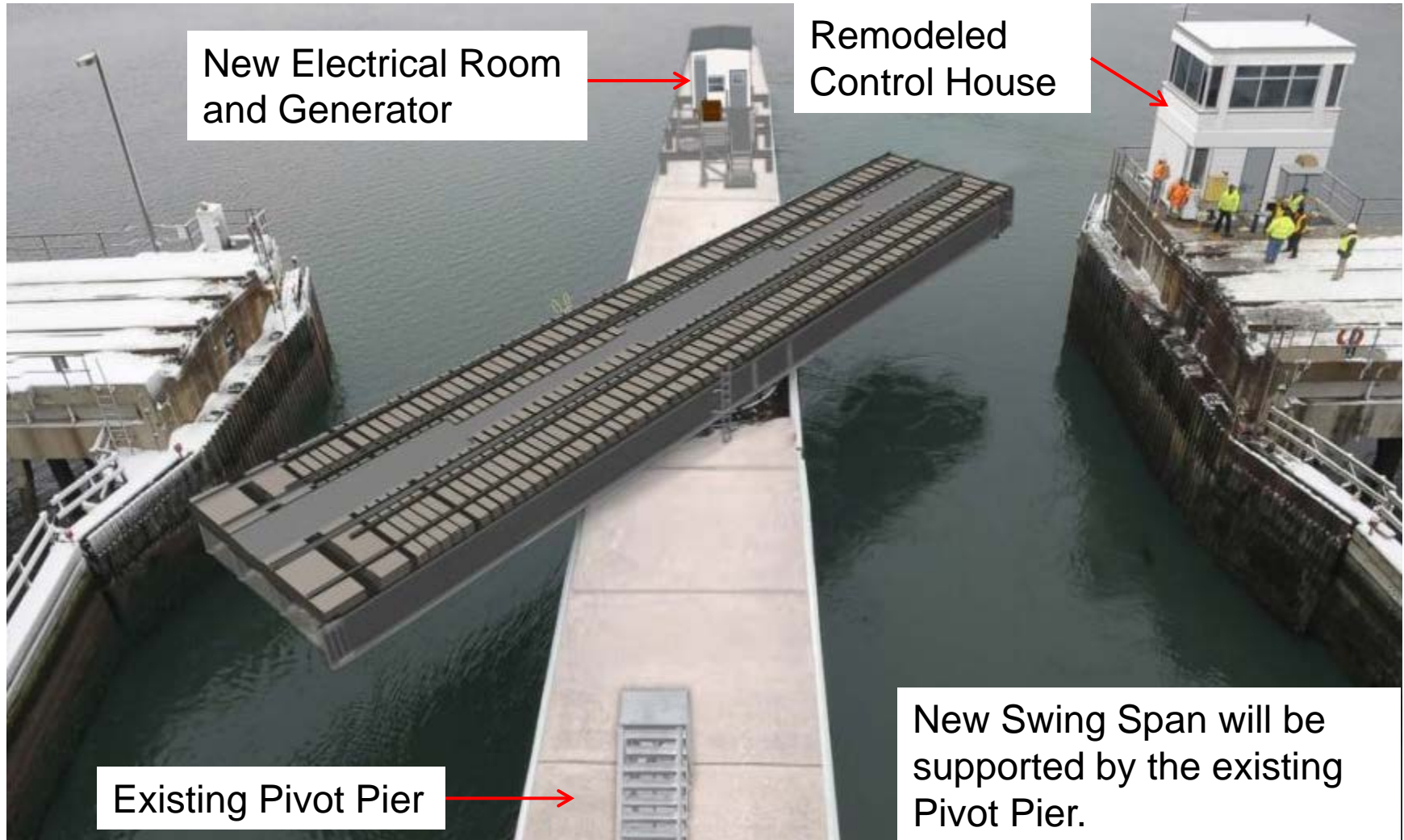
# Existing Swing Span Built in 1885

Major Delays (Busing Required):  
8/6/14, 1/26/15 and 2/3/15



Minor Delays: 6/1/13, 6/15/13,  
6/25/13, 8/21/13, 9/7/13,  
9/16/13, 9/28/13, 5/12/14,  
5/13/14, 6/26/14 and 1/28/15

# Proposed Swing Span – Contract H62CN02



New Electrical Room  
and Generator

Remodeled  
Control House

Existing Pivot Pier

New Swing Span will be  
supported by the existing  
Pivot Pier.



## Bid Results for H62CN02 – December 2015

<b>J.F. White Contracting Co.</b>	<b>\$16,177,594</b>
<b>The Middlesex Corp.</b>	<b>\$16,733,221</b>
<b>HNTB Corporation (Estimate)</b>	<b>\$16,759,123</b>
<b>Walsh Construction Company</b>	<b>\$17,084,381</b>
<b>Cianbro Corporation</b>	<b>\$17,285,971</b>
<b>SPS New England, Inc.</b>	<b>\$17,909,546</b>
<b>Barletta Heavy Division, Inc.</b>	<b>\$22,015,000</b>

❖ DBE Goal = 7%

# Construction Schedule and Budget

## Schedule:

- NTP = March 2016
- Total Duration = 648 Days from NTP
- Final Completion = December 2017

## Budget:

- Contract #B91CN12 (Emergency Br. Repairs) - \$1,100,000.00
  - Contract #H62CN01 (Pile Repairs) - \$7,282,034.00
  - **Contract #H62CN02 (Swing Span Replacement) - \$16,679,750.00**
- ❖ Funds for this action are available through FTA Grant #54006 with 80% provided by FTA and 20% through MBTA Revenue Bonds Grant #R15A05.

# Three Anticipated Rail Service Outages

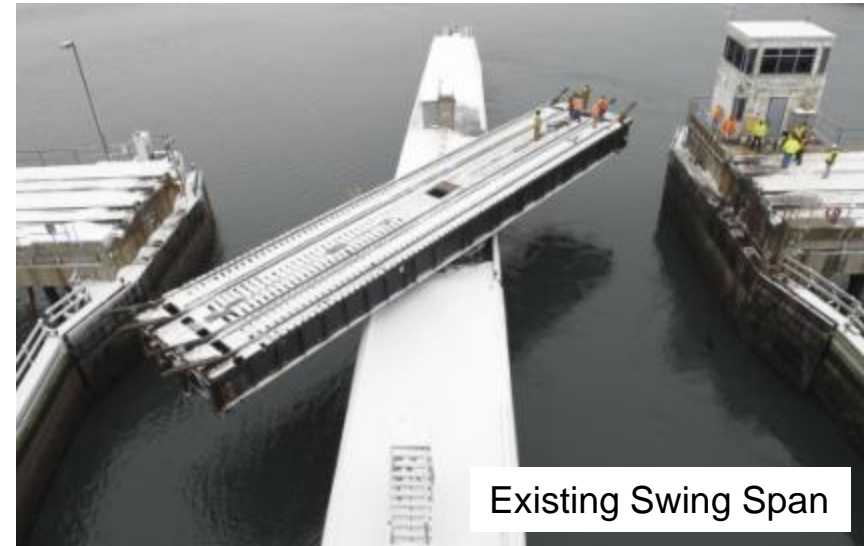
## 1. Weekend in May 2016 (5/14&15) to Determine Weight of Existing Swing Span.

- Coincides with Silver Line expansion outage in Chelsea to minimize disruption and maximize cost savings.
- No Rail Service from North Station to Beverly.
- Maintain Rail Service from Beverly to Rockport and Newburyport.
- Bus Service from North Station to/from Chelsea.
- No scheduled service to River Works on Saturday and Sunday.
- Blue Line to Wonderland. Local Bus service to/from Lynn and Swampscott. Bus Routes 439, 441, 442, 448, 449 and 455.
- Express Bus Service from North Station to/from Salem and Beverly.



# Determine Weight of Existing Span

- Design Goal – Do not add additional load onto the Pivot Pier.
- Need to confirm existing bridge dead load with field measurements.
- Jack existing bridge to measure current dead load of existing span.
- Use existing dead load results to compare to current design loads and update beam cambers for steel fabrication.
- Ensures Pier Safety and minimizes new machinery costs.



Existing Swing Span

# Three Anticipated Rail Service Outages

## 2. Weekend in September 2016 to Perform Electrical Work.

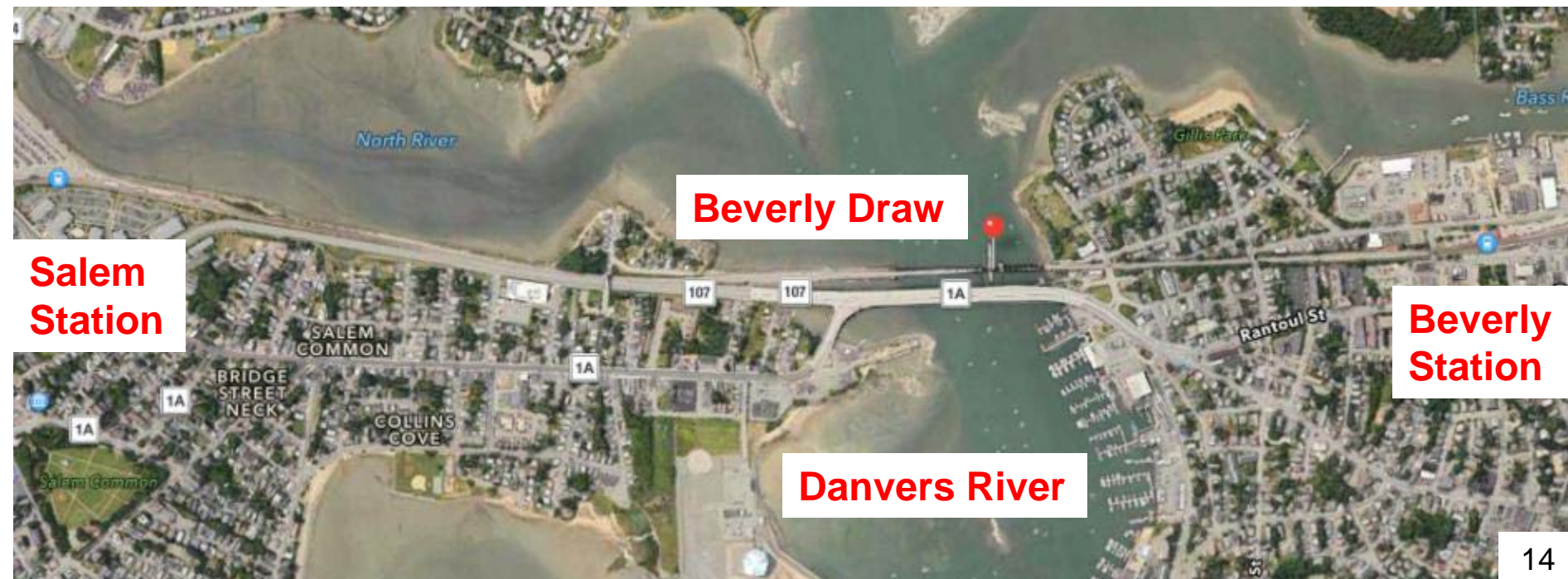
- Work includes relocating Automatic Transfer Switch and perform electrical work to maintain power to Span Machinery during the installation of new Electrical Room.
- Maintain Rail Service from North Station to Salem and from Beverly to Rockport and Newburyport.
- Alternate Service (Busing) between Salem and Beverly.
- Salem Station has a 700 car parking garage.



# Three Anticipated Rail Service Outages

## 3. 21 Day Shutdown: April 2017 for the Swing Span Replacement.

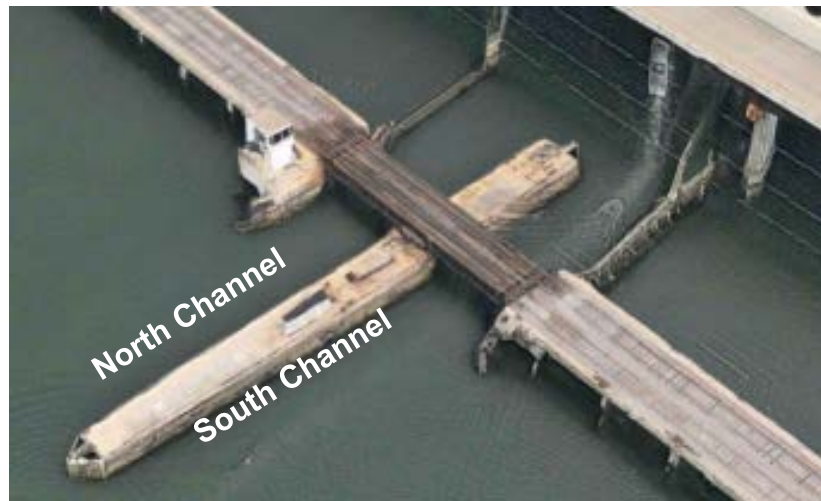
- Maintain Rail Service to Salem. No Rail Service from Salem to Rockport and Newburyport.
- Alternate Service (Busing) between Salem and Beverly.
- Beverly Station has a 500 car parking garage.
- The shutdown will occur prior to or after Good Friday (April 14, 2017), and the Boston Marathon long weekend (April 14th thru April 17th).



# Disruption to Marine Traffic

## **Marine Traffic (Channel Closures – Harbor Police Required)**

1. North Channel: July 2016 to install Submersed Conduit System (This is outside the Time Of Year Restriction for in-water work and after July 4th)
2. During 21 Day Shutdown (April 2017):
  - Both Channels: Maximum 3 Days to Remove Existing Swing Span
  - One Channel: to install New Center Pivot on Pivot Pier
  - Both Channels: Maximum 3 Days to Float-in New Swing Span
  - One Channel: to Complete Mechanical & Electrical Installation & Testing



# Public Outreach

1. Meeting with Delegates at the Statehouse – 2/26/15
  2. Community Meeting at Beverly High School – 4/1/15
  3. Congressman Moulton Meeting – 7/17/15
- ❖ Future Community Meetings to discuss service impacts will be held in Newburyport and Gloucester.



## Recommendation of Award

- ❖ It is recommended that the Board of Directors authorize the General Manager to award and execute Contract No. H62CN02 with J.F. White Contracting Co. for a sum not to exceed \$16,177,594.00.