

# **Massachusetts Bay Transportation Authority**

---

## **General Manager's Remarks**

**Fiscal and Management Control Board**

**April 1, 2019**



---

## Agenda

---

- Lansdowne Station
- Wheelchair Accessible Vehicles pilot launch
- GLX bridge closures: Washington Street
- Tobin Bridge/Chelsea Curves
- Mobility device license pilot
- Station brightening



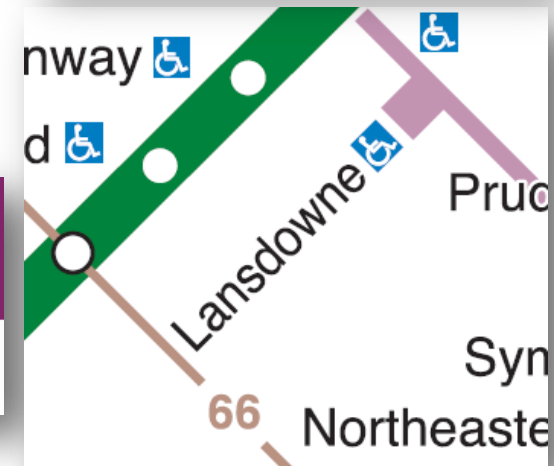
## Lansdowne Station: Framingham/Worcester Line

- New name officially takes effect Monday, 4/8
- Selection of Lansdowne: distinct, familiar, per naming policy
- Change prompted by renaming of local street
- Updates of line, system maps, schedule info, MBTA.com, apps, station signage underway
- Customer information also through: onboard, station announcements, station announcements, train crew notifications

**LANSDOWNE**

**BOSTON**

Outbound from Boston			
ZONE	STATION	TRAIN #	50
	Bikes Allowed		
1A	South Station		4:4
1A	Back Bay		4:4
1A	Lansdowne		4:5
1A	Boston Landing		





---

## Wheelchair Accessible Vehicles/Rideshare Pilot

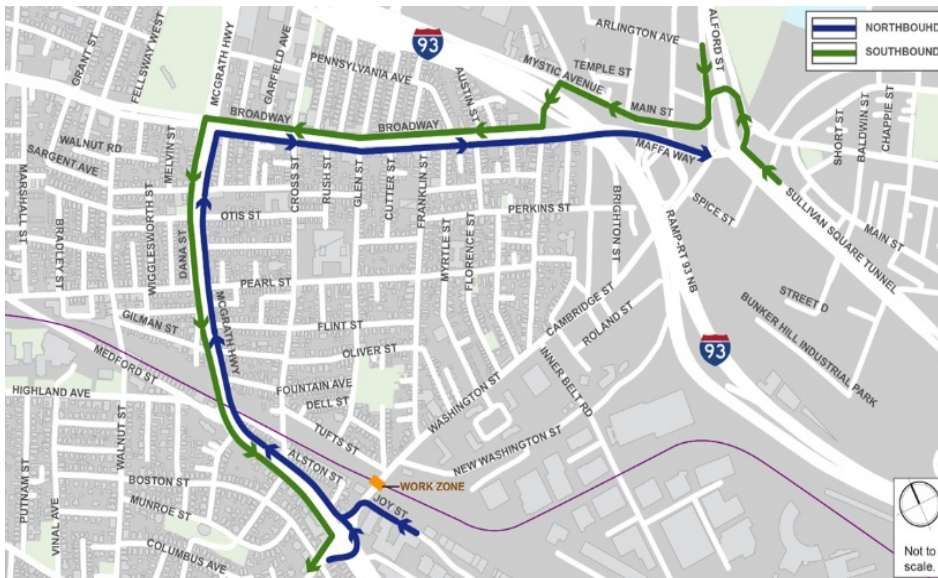
---

- Beginning today, one-year pilot seeks to expand access to wheelchair accessible vehicles
- Based on lessons of existing RIDE pilot with TNCs, availability of WAVs needs to increase
- Pilot offers subsidies based on per-hour availability of WAVs
- Subsidy is financed through fee assessed on TNC rides imposed by 2016 statute
- Seeks to overcome barriers: purchase/maintenance costs of WAVs, demand for WAVs exceeds availability
- Two principal goals:
  - To extend convenience of on-demand pilot to people with WAV needs beyond existing rideshare/RIDE pilot
  - Increase WAV supply hours by factor of four



## GLX Update: Washington Street Bridge Closure Starts Monday, 4/8

- Second of three bridge closures: Washington Street Bridge (underpass) in East Somerville starting night of Monday, April 8; closure expected to last through fall 2019
- Broadway Bridge in Ball Square closed on March 22; successfully removed over the following weekend. Broadway Bridge will be completely reconstructed and is anticipated to return to service in March 2020
- Continue to anticipate closure of Medford Street Bridge in Gilman Square in July 2019 to spring 2020



Washington Bridge traffic detour starting April 8, 2019

- Appreciate the patience of the community affected by the bridge closures
- Thank you to city partners and stakeholder groups for continued collaboration and support of GLX
- Full info on bridge closures, including directions and helpful maps: [www.greenlineextension.org](http://www.greenlineextension.org)



---

## Tobin Bridge/Chelsea Curves: lane reductions starting tonight

---

- Starting tonight, lane restrictions begin on Tobin Bridge/Route 1 northbound
- Work zone is expected to affect Routes 111, 426, 428
- Travel options:
  - Commuter Rail: Haverhill and Newburyport/Rockport Lines
  - Parking historically available at Haverhill, Bradford; Newburyport, Salem, Lynn
  - Commuter Rail: Chelsea Station-North Station
  - SL3: inbound fares at Chelsea stations free for customers (paid by MassDOT)
  - Added capacity on Blue Line
- Parking:
  - @MBTA\_Parking: eight largest garages, including Beverly, Salem, Wonderland
  - [MBTA.com/TobinBridge](https://www.mbta.com/TobinBridge)





---

## Mobility device pilot launches today

---

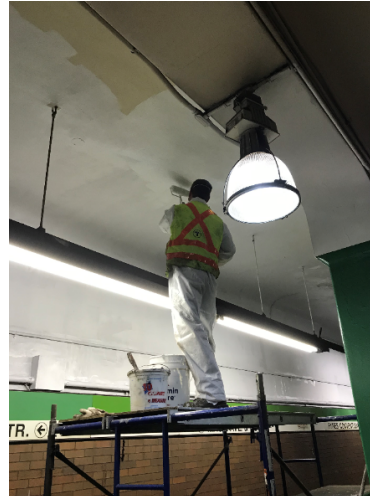
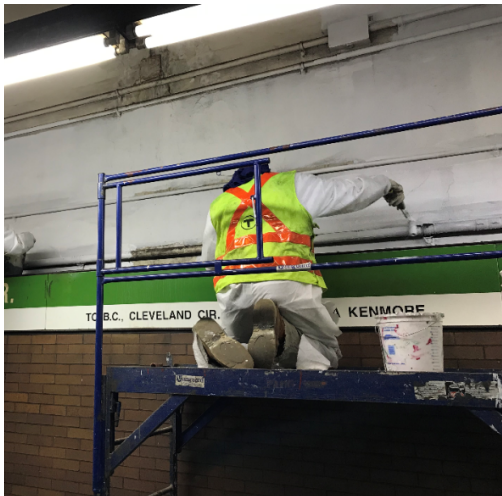
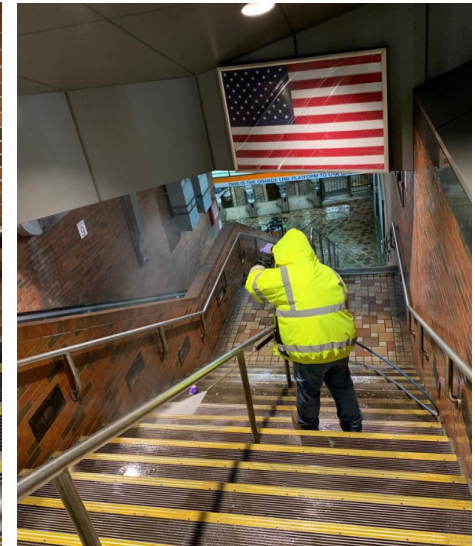
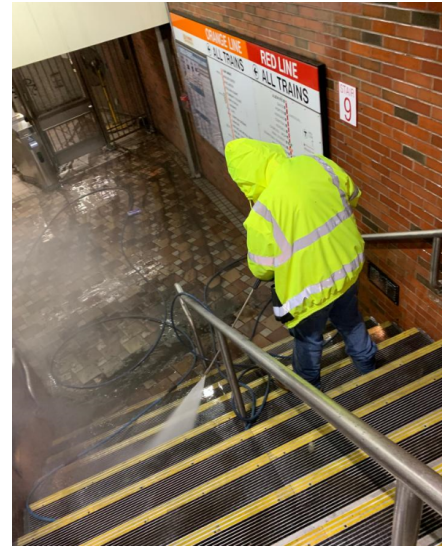
- New pilot establishes process to license micro-mobility devices on MBTA property
- New devices can support goals: climate, congestion, mobility, health
- Can also enhance transit access, support first-/last-mile connections, and lead to reduction in short vehicle trips
- Process positions T to embrace new devices with measures to prevent impediments to accessibility and operations
- Application process does not give favor to any device
- Applications start today; first licenses estimated to be approved by May 1; pilot runs through December





## Station brightening kicks off today

- First phase will target high-volume stations, busways, yielding positive impacts in the near term
- Addresses gap between regular maintenance and other needs including:
  - Power washing, wayfinding updating maps, painting, sidewalk, tile, repairs/replacement



- Focus on: Ashmont, Dudley, Back Bay, Downtown Crossing, JFK
- Program duration: six months; incorporate lessons learned from phase one into future maintenance