



Massachusetts Bay Transportation Authority

GM Remarks

Fiscal and Management Control Board

October 16, 2017

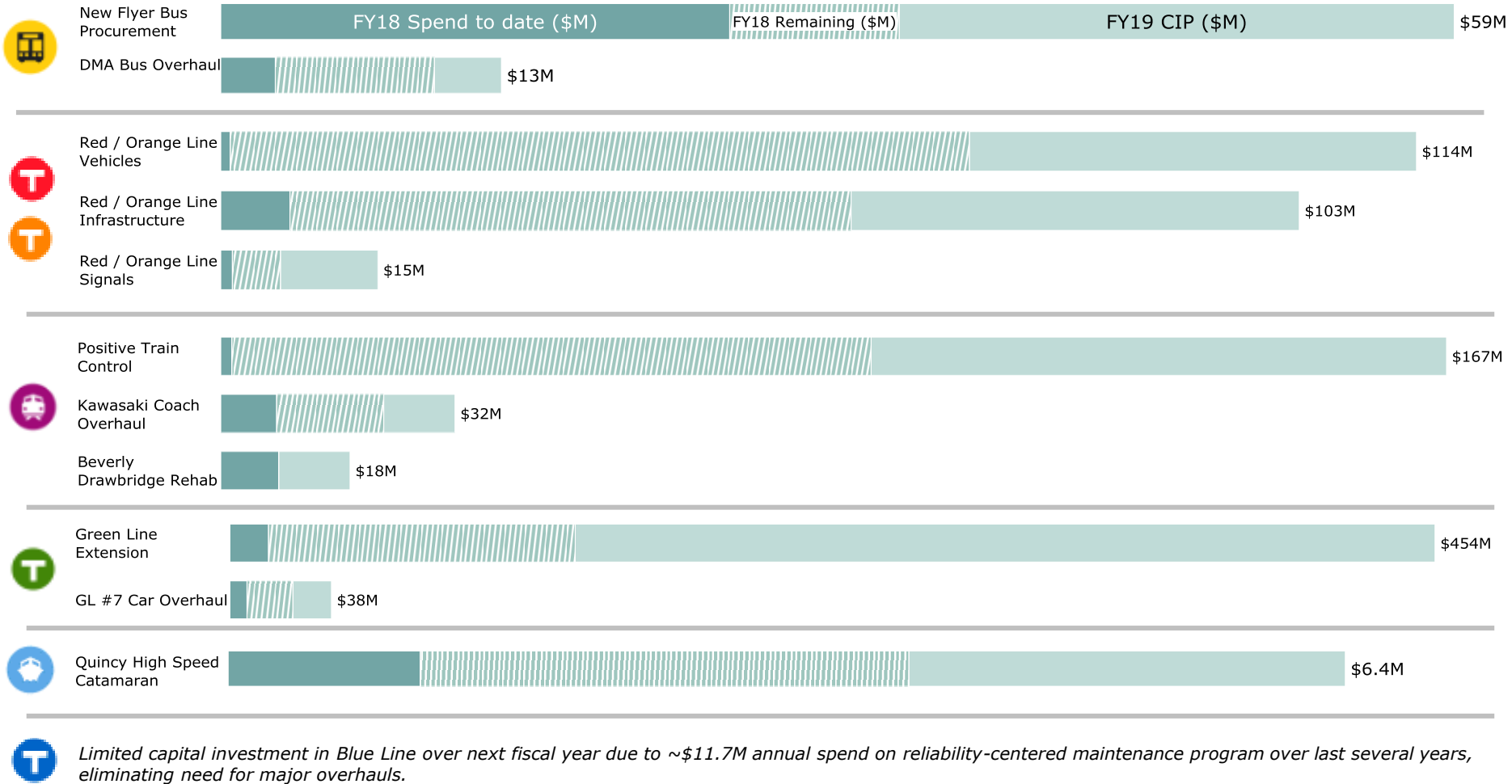


Agenda

- Capital Updates:
 - Gloucester Drawbridge
 - Red Line Test Track
- CRRC – Springfield
- Winter Communications



FY18 Capital Spending on Key Projects





Capital Project Update: Gloucester Drawbridge over Annisquam River

Project Description

- Full replacement of existing bridge, including mechanical/electrical components; new control tower
- New structure to include two single-leaf bascule bridges, each carrying a single track
- Full integration into existing signal system

Status

- Affirmative Board action will allow project to advance into construction



Capital Project Update: Gloucester Drawbridge over Annisquam River

Customer Impact

- New bridge's useful life: 75 years, replacing bridge first built in 1932
- Brings structurally deficient asset into state of good repair

Next Steps

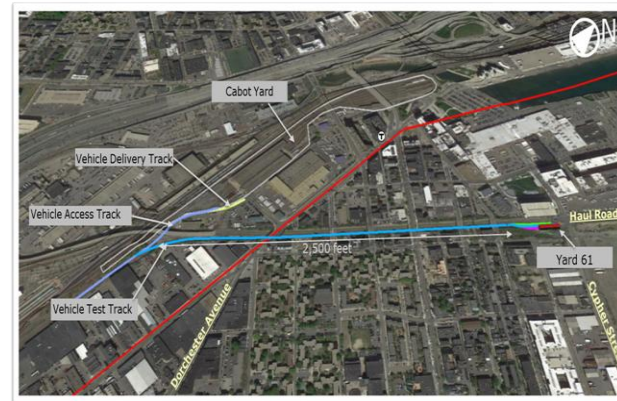
- Approval will result in resolving issue that affects commuter rail reliability because of existing infrastructure's age/condition



Capital Project Update: Red Line Test Track

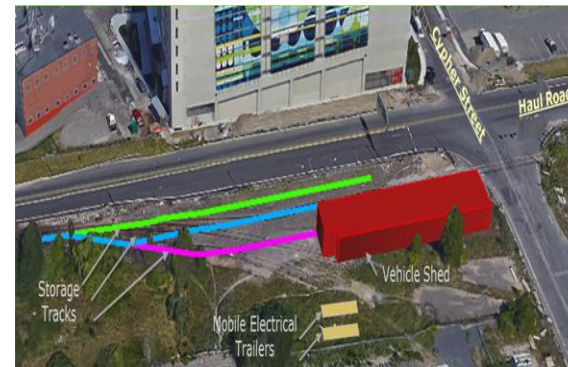
Project Description

- Construct Red Line Test Track in South Boston, approx. 2,500 feet
- Will allow for static and dynamic testing of new Red Line vehicles
- Project consists of replacing existing freight rail Seaport Track with transit rail
- Construction of 166-foot x 30-foot facility for vehicle testing



Status

- Board action today will allow for advancement of critical component of Red Line fleet upgrade
- Barletta Heavy Division, lowest bidder
- Cost: approx. \$21.3 million





Capital Project Update: Red Line Test Track

Customer Impact

- Ultimate goal is new fleet, signal infrastructure
- Red Line expected to run at three-minute headways through RL core: Alewife-JFK
- Significant increase of capacity

Next Steps

- Board action will mark major milestone in vehicle and infrastructure upgrades





CRRC Rail Car Facility – Springfield

Cost of construction: \$95 million

Facility size: 204,000 square feet

Construction completion: winter 2018





CRRC Rail Car Facility – Springfield

Full operation will result in hiring of 150 technology, engineering, and assembly employees

Emphasis on hiring from Springfield area

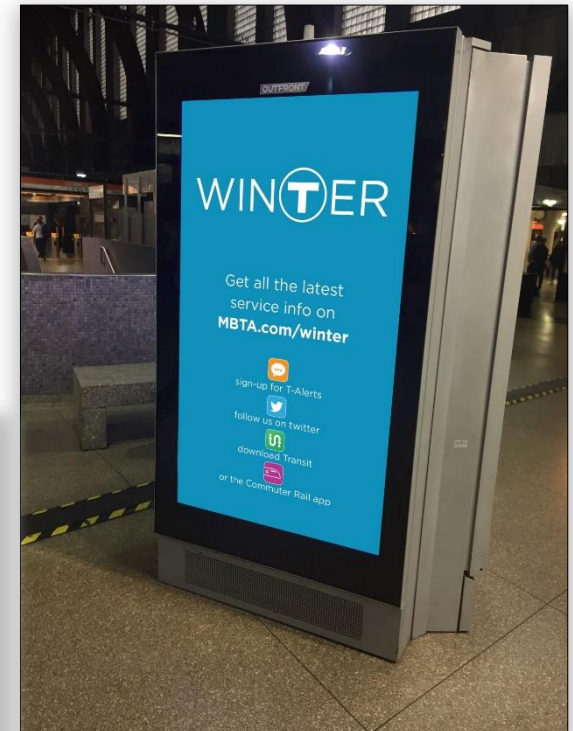




Winter awareness campaign

The winter awareness campaign will begin on November 1, 2017 and run through March

It will run on all available MBTA modes of communication as well as on MassDOT highway billboards





Always Evolving: Winter 2017/2018

Inter-agency Coordination

- ❖ Coordination Meeting with MassDOT, Highway District 6, MBTA, DCR, City of Boston to better respond and communicate during winter storms.
 - EOC Coordination
 - Sharing resources (Snow Farms)
 - Coordinate snow clearing and removal efforts (Commonwealth Avenue, Huntington Avenue, Beacon Street, and Key Bus Routes)
- ❖ Development of bus stop guidance and community outreach related to accessibility across the network.
- ❖ Continue to build upon successes of involving the ESF1 transportation desk at MEMA bunker and other state agencies.





Communications: Winter 2017/2018 – New This Year

Service Level Visuals

The following visuals will be used this winter on commuter rail for “today and tomorrow” service communications, as well as in T-alerts and on Twitter for **all modes** as needed during a weather event.

Winter commuter rail schedules will include ‘reduced service’ and ‘extremely reduced service’ schedules. These schedules will be identified with an ‘R’ or an ‘E’ along with their explanations in printed schedules and online.

New: for use on all modes as needed including Commuter Rail.



**REGULAR
SCHEDULE**



**REDUCED
SCHEDULE**

Commuter rail
reduced service
schedule in
effect.



**EXTREMELY
REDUCED
SCHEDULE**

Commuter rail
extremely
reduced service
schedule in
effect.



**NO
SERVICE**