



**Massachusetts Bay  
Transportation Authority**

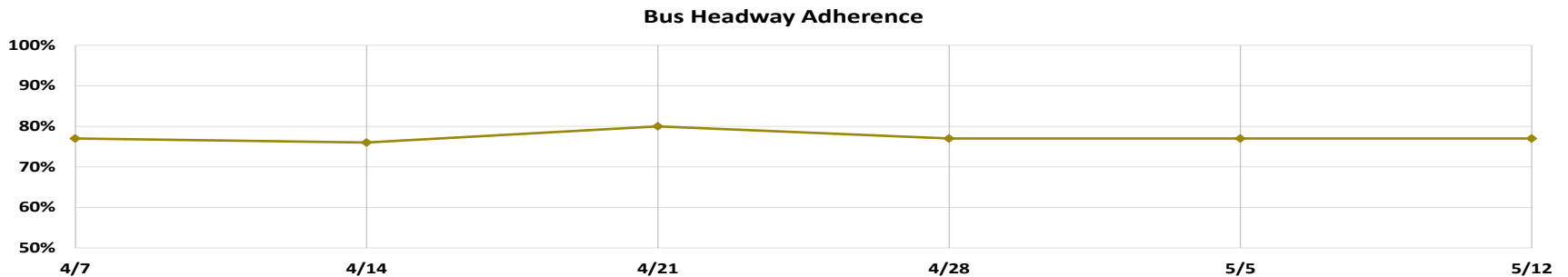
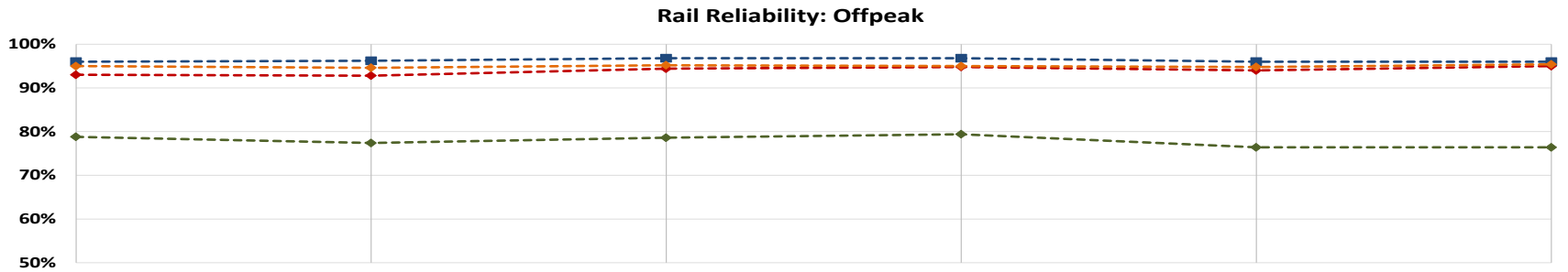
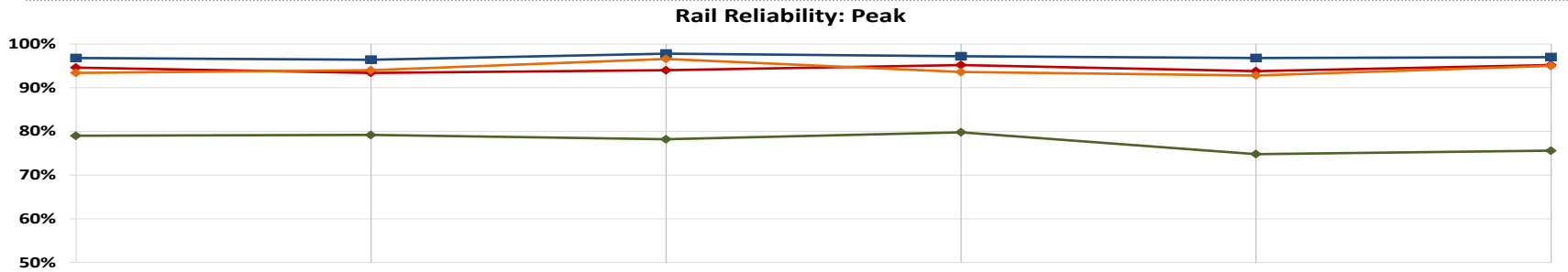
---

## **COO Remarks**

**May 15, 2017**



# Weekly Reliability





## Weekly Reliability

---



Failed Green Line OCS Insulator



---

# **MBTA Maintenance Of Way (MOW) Performance Dashboard**

**May 15, 2017**

---



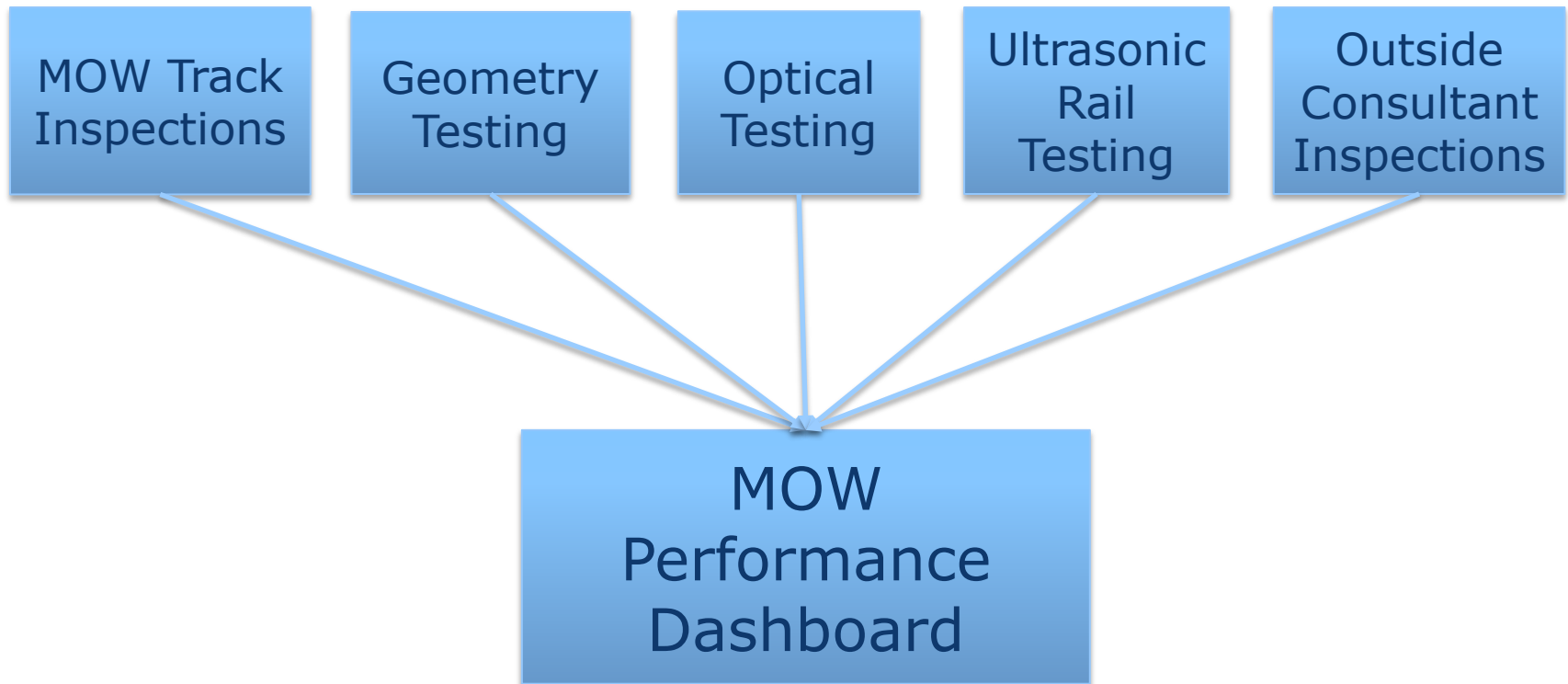
# Overview

---

- **MOW Performance Dashboard Inputs**
- **The MOW Performance Dashboard**
- **More than just a dashboard**
- **Benefits**
- **Next Steps?**

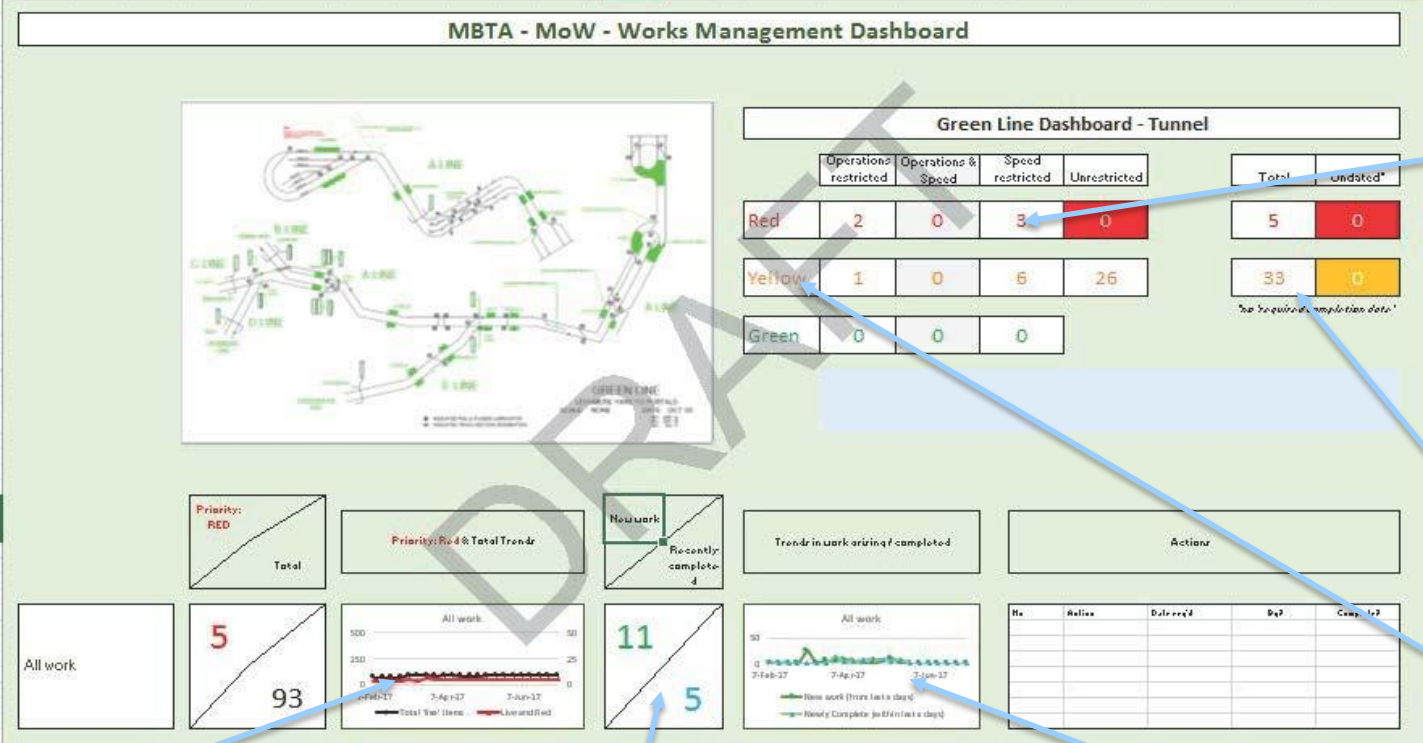


# ***MOW Performance Dashboard Inputs***





# MOW Performance Dashboard



Shows work with operational restrictions

Shows work which is overdue

Shows trends of 'red work' and 'all work'

Shows recent work arising / work completed

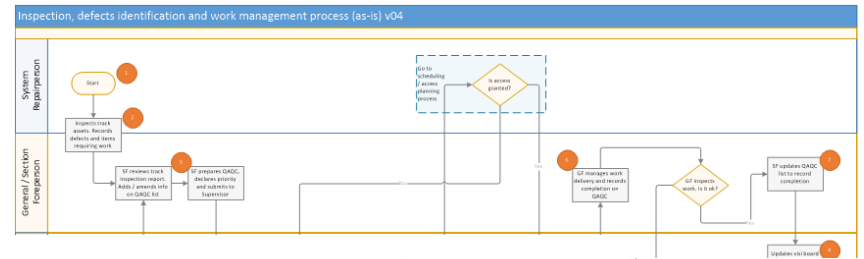
Shows trends of work arising / completed

Shows work priority as per standard



# More than "just" a dashboard

- Electronic data store
- Defined (standard) process
- Defined Procedure (and roles)
- QA Review meeting
- Continuous reporting updates



Engineering & Maintenance

Standard Operating Procedure for Maintenance of Work

Massachusetts Bay Transportation Authority

Remit & Agenda for MoW Works Management Review

Aim

### MBTA - MoW - Works Management Dashboard

Green Line Dashboard - Tunnel					Total	Undated*
	Operations restricted	Operations @ Speed	Speed restricted	Unrestricted		
Red	2	0	3	0	5	0
Yellow	1	0	6	26	33	0
Green	0	0	0			

\*See Required completion date.

Priority: RED

Total

5

93

Priority: RED Total Trends

Network

Recently completed

11

5

Trends in work arising / completed

Actions

No.	Title	Entered	By?	Completed





## *Benefits*

- **Standardizes the works management process across all lines**
- ***Helps the line supervisor* prioritize work**
- **Makes the line supervisors job easier (can filter for access / resources)**
- **Strengthens / broadens understanding of the standard**
- **Simplifies reporting – *eliminates additional reporting effort***
- **Provides information based on live data**
- ***Provides process to monitor works management* for Director MOW /Senior Management**
- **Promotes FTA Map 21 compliance**



## *Next Steps*

- Enhance training for system repair persons and section forepersons
- Automate data entry using handhelds in the field
- Build the functionality into the new Trapeze EAMs/Optram
- Introduce tactical tools to interpret geometry, optical, and ultrasonic testing
- Strengthen the standard (e.g., define permanent repair timescales)
- *Develop a set of strategies to incorporate all work necessary to bring track infrastructure into a state of good repair*