



Massachusetts Bay Transportation Authority

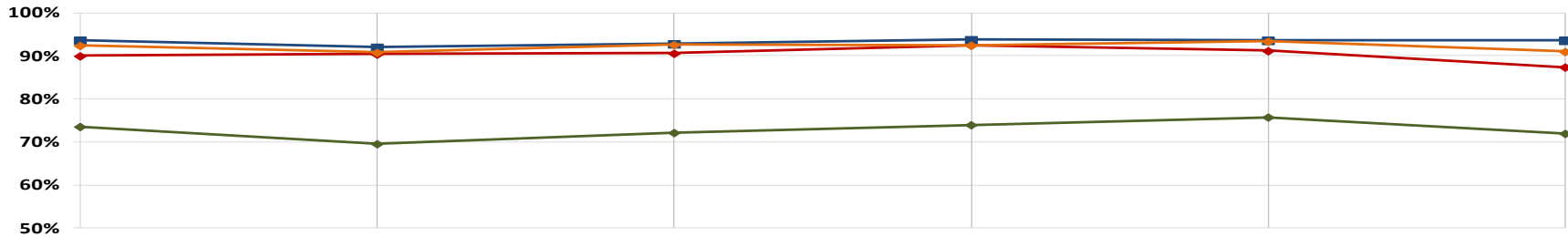
COO Remarks

October 31, 2016

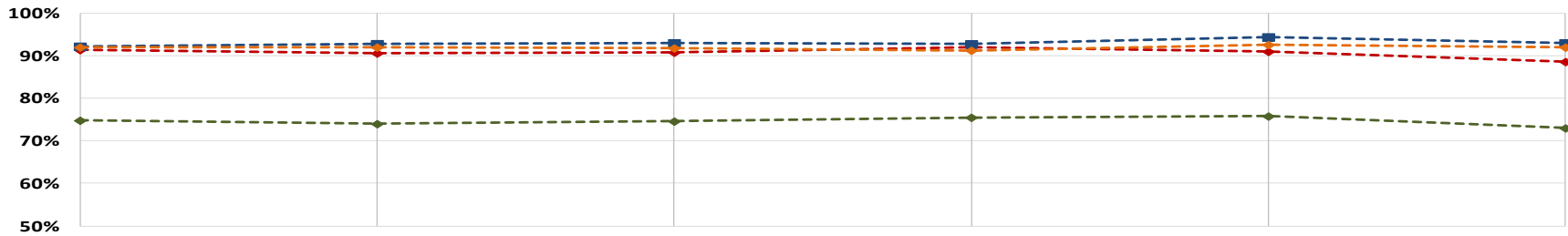


Weekly Reliability

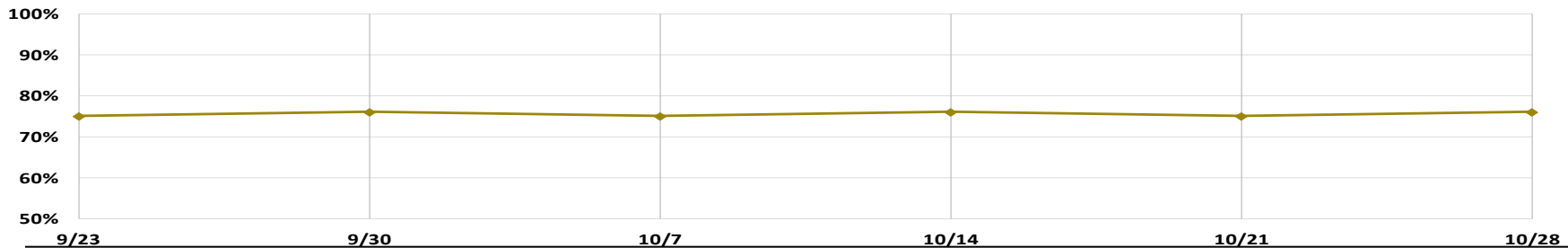
Rail Reliability: Peak



Rail Reliability: Offpeak



Bus Headway Adherence



Emergency Evacuation Drill

- **On Saturday, 10/29/2016, MassDOT Security & Emergency Management held a safety evacuation drill at Alewife**
Participants included:
 - MBTA Operations/Safety/TPD
 - Cambridge/Somerville/Arlington Fire

- **The Scenario centered on Red Line train evacuation in the tunnel with smoke/fire onboard**
 - 50+ volunteers portrayed passengers; some with disabilities and assigned injuries
 - The evacuation went through the tunnel to an emergency exit to ensure effective procedures

- **The drill focused on interagency communications, incident command, mass search and rescue**





New Bus Procurement: 40 and 60 Foot Buses



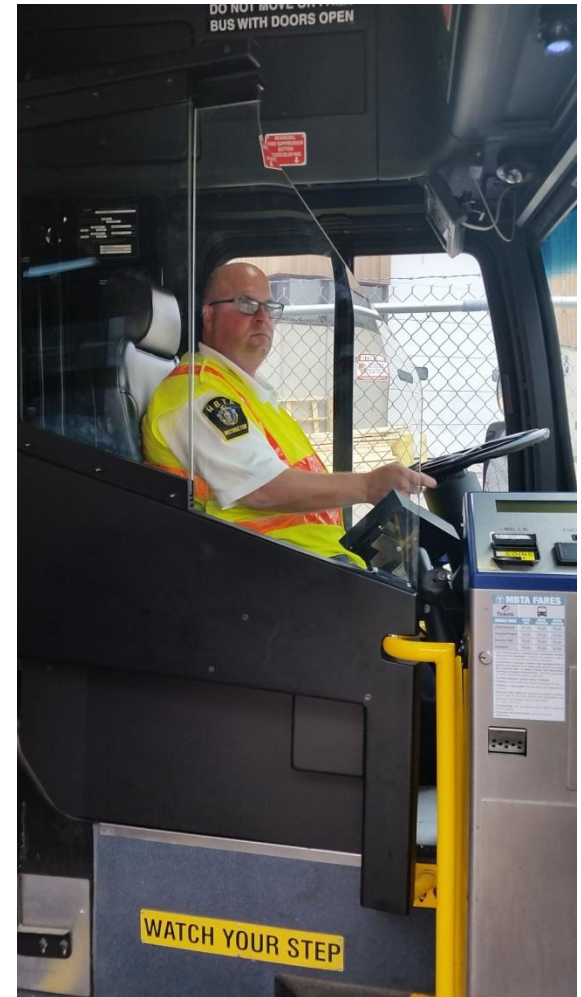
150 40' Hybrid Diesel Electric Buses
175 40' CNG Buses

44 60' Compressed Natural Gas Buses

- 8 Hybrids buses and 3 CNG buses have been put into service
- To date 14 Hybrids buses and 7 CNG buses have been delivered to Boston
- All new 40 foot buses are anticipated to be in service by September 2017
- All new 60 foot buses are anticipated to be in service by May 2017

Operator Protective Door

- The first of our new buses with the operators protective door is expected to be delivered next week and will enter service in approximately two weeks.
- This is a full door that can be partially opened (top half) or fully closed.





**Massachusetts Bay
Transportation Authority**

Operations Winter Preparedness

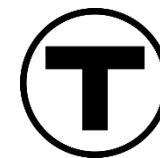
October 31, 2016



Winter Resiliency Phase 2

RED LINE	Projected as of 10/23/16	Actual	
3 rd Rail / Replacement (Quincy Adams- Braintree Branch, Ashmont Branch)	56%	60%	■
Heater Element Replacement	59%	59%	■
Heater Element Infrastructure	65%	55%	■
Signal Trough	81%	82%	■
Station Track Replacement	50%	51%	■
Running Rail: Ashmont Clayton Curve	47%	47%	■





Infrastructure

	Projected as of 10/23/16	Actual	
Snow Fencing	80%	95%	
Switch Covers	50%	50%	
Third rail, Switch and Trip Heater audits	25%	60%	
Winter Supplies (shovels, salt, sand etc)	70%	80%	
Installing Clearing Stakes (fire hydrants and other critical locations)	80%	90%	
Emergency Snow Removal Contracts	100%	100%	



Switch without cover



Switch with cover



Vehicles

NON-REVENUE	Projected as of 10/23/16	Actual	
Winter Equipment Preparation (Plow Trucks, Rail Borne Equipment, Snow Blowers etc.)	50%	30%	Yellow
Refurbishment of Jet Blower	50%	50%	Green

REVENUE	Projected	Actual	
Spare Traction Motors	70%	95%	Green
Car Equipment Preparations & Inspections	66%	66%	Green
Installation of Snow Plows	50%	75%	Green
Anti-Icing Equipment Preparation	50%	50%	Green





Management

PLANNING	Projected as of 10/23/16	Actual	
Revise Snow & Ice Operations Plan	95%	85%	■
Transportation Partner Outreach (expanding Twitter Outreach)	50%	50%	■
TRAINING AND EXERCISES	Projected	Actual	
Equipment Deployment Drill	75%	60%	■
Storm Desk and Field Coordinator Training	50%	50%	■

