



**Massachusetts Bay
Transportation Authority**

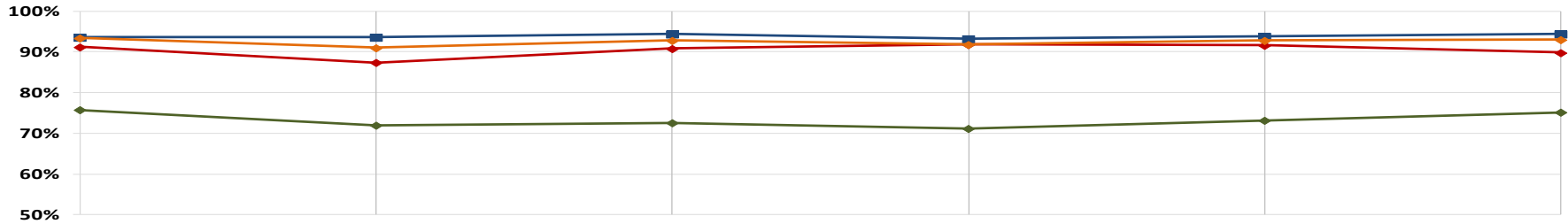
COO Remarks

November 28, 2016

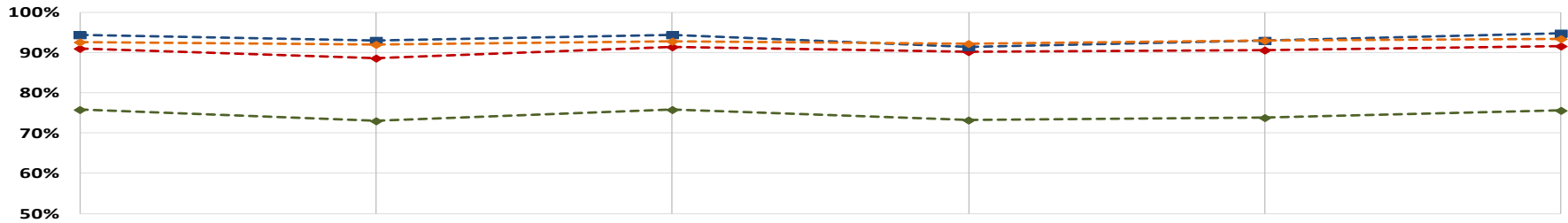


Weekly Reliability

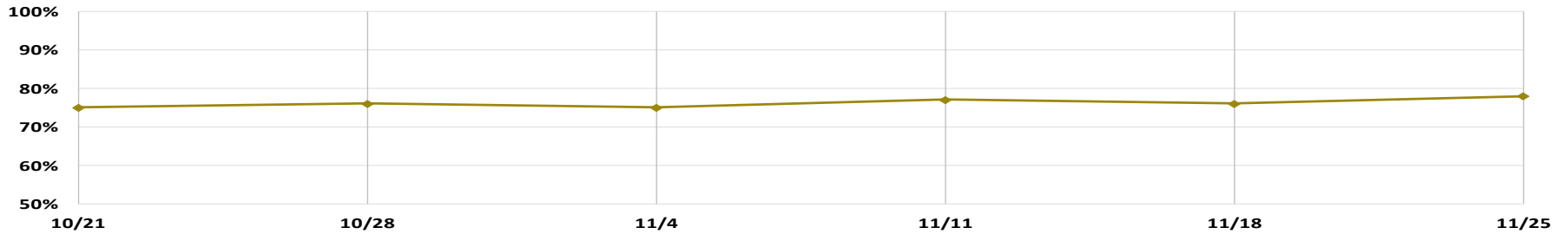
Rail Reliability: Peak



Rail Reliability: Offpeak



Bus Headway Adherence





Overnight Bus Service Survey Update

- Version in 8 languages now available online at www.mbta.com/nightbus
- As of Friday, November 25, 6000 people have responded online
- Our partners are making the survey available on paper in all of the languages
- The survey will be available through December 16, 2016
- The results will be reported to the FMCB in January 2017



**Massachusetts Bay
Transportation Authority**

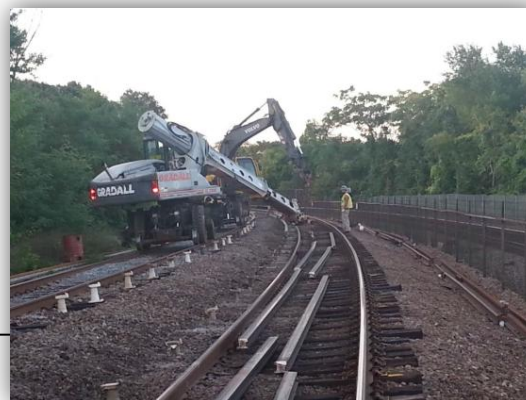
Operations Winter Preparedness

November 28, 2016









Winter Resiliency Phase 2

	Projected as of 11/28/16	Actual	
3 rd Rail / Replacement (Quincy Adams- Braintree Branch, Ashmont Branch)	56%	65%	Green
Heater Element Replacement	59%	60%	Green
Heater Element Infrastructure	65%	54%	Yellow
Signal Trough	81%	82%	Green
Station Track Replacement	50%	51%	Green
Running Rail: Ashmont Clayton Curve	47%	47%	Green





Infrastructure

	Projected as of 11/28/16	Actual	
Snow Fencing	90%	95%	
Switch Covers	90%	95%	
Third rail, Switch and Trip Heater audits	90%	100%	
Winter Supplies (shovels, salt, sand etc)	90%	100%	
Installing Clearing Stakes (fire hydrants and other critical locations)	90%	90%	
Emergency Snow Removal Contracts	100%	100%	



Switch without cover



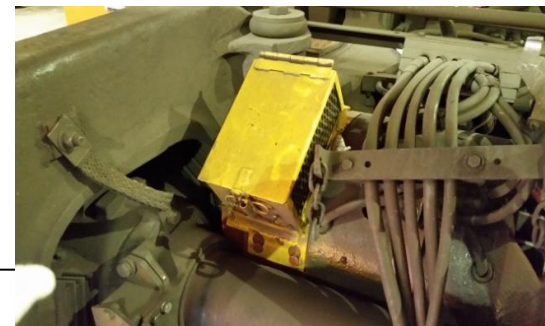
Switch with cover



Vehicles

NON-REVENUE	Projected as of 11/28/16	Actual	
Winter Equipment Preparation (Plow Trucks, Rail Borne Equipment, Snow Blowers etc.)	90%	80%	Yellow
Refurbishment of Jet Blower	90%	90%	Green

REVENUE	Projected	Actual	
Spare Traction Motors	100%	100%	Green
Car Equipment Preparations & Inspections	95%	95%	Green
Installation of Snow Plows	90%	95%	Green
Anti-Icing Equipment Preparation	95%	100%	Green





Management

PLANNING	Projected as of 11/28/16	Actual	
Revise Snow & Ice Operations Plan	100%	100%	
Transportation Partner Outreach (expanding Twitter Outreach)	90%	90%	

TRAINING AND EXERCISES	Projected	Actual	
Equipment Deployment Drill 12/2/16	90%	80%	
Storm Desk and Field Coordinator Training 11/21 & 11/22	100%	100%	

