



**Massachusetts Bay  
Transportation Authority**

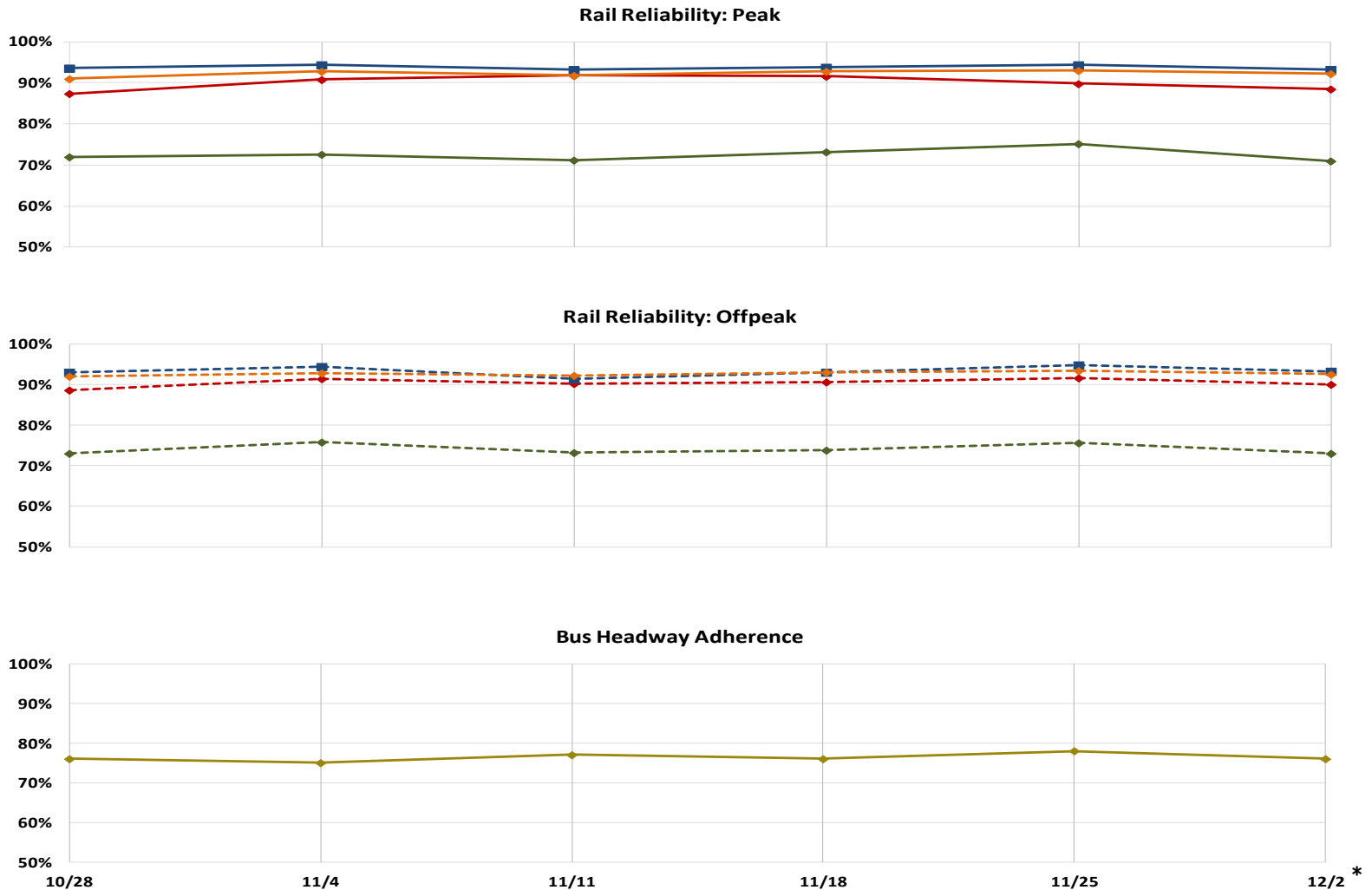
---

## **COO Remarks**

**December 5, 2016**



# Weekly Reliability

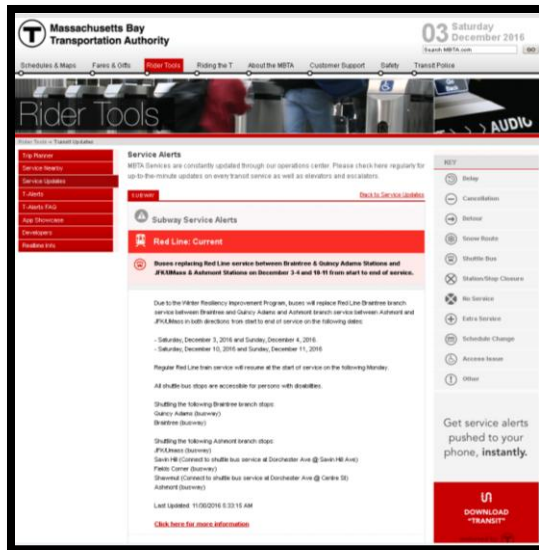


\* Weekly average does not include Friday, 12/2.



# Weekend Diversions

- Multiple state of good repair diversion in order to support winter resiliency on the Red Line
- Notification : diversion was advertised through the web site, twitter, t-alerts, station signage and mobile digital billboards on November 5th.





# Tree Removal Program

---

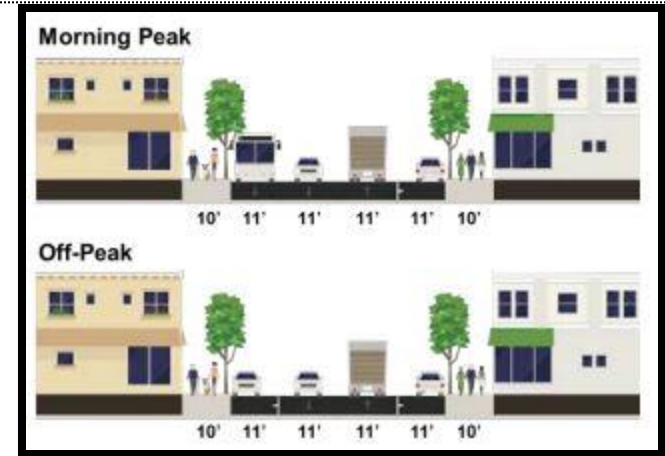
- Tree Assessment of the D Line this fall between D Line Fenway to Riverside Station
  - This assessment identified:
    - 592 trees as potentially hazardous
    - 472 as highest priority level 1 & 2 trees to be removed.
- These trees are located both on and off the MBTA ROW.
- 20-25 private property owners were contacted to negotiate access with the project contractor
- This week, the first of a series of anticipated mid day service diversions on the D Line is scheduled to commence between 9am and 3pm on December 6-8th and 12-15<sup>th</sup> between Newton Highlands and Reservoir Stations.





# Everett Bus-Only Lane

- Pilot is part of the City of Everett's Transit Action Plan, a partnership between the City and MassDOT
- Parking will be banned along a 1-mile stretch of Broadway between MA Route 16 and Ferry Street in Everett between 4AM and 9AM this week (12/5-12/9)
- MBTA bus routes 97, 104, 109, 110, and 112 will travel in a dedicated bus-only lane during these times.
- MBTA will monitor customer impacts, and continue to work with Everett to evaluate long-term transit improvements



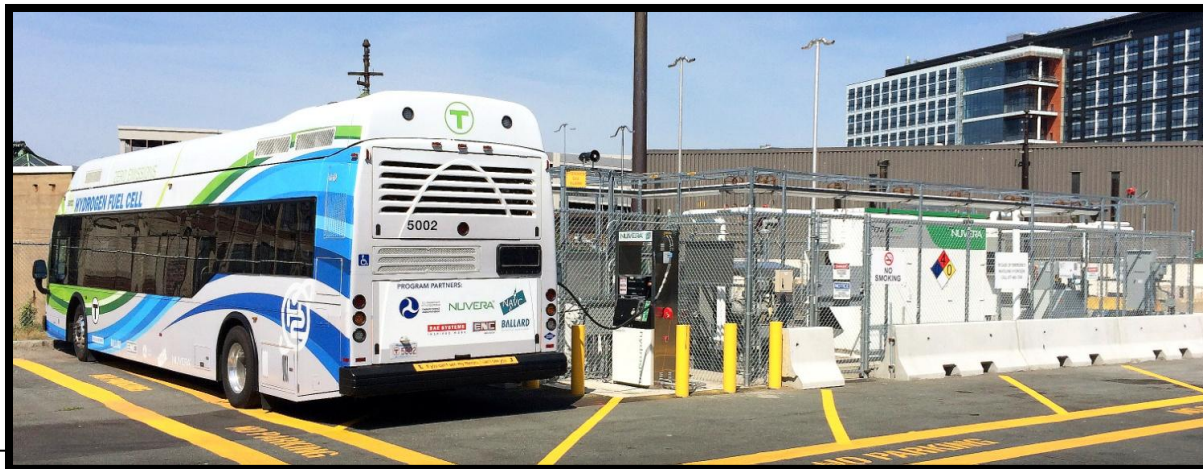
Source: Everett Transit Action Plan





# National Fuel Cell Bus Program

- Program is sponsored by the FTA aimed at advancing the commercialization of 40-foot, heavy duty, fuel cell transit buses.
- Multi-year project with partners:
  - Nuvera, BAE Systems, Northeast Advanced Vehicle Consortium, Ballard and El Dorado National
- Fuel Station installed at Charlestown Bus Garage
- Bus Operation on Routes in Boston, Everett, Malden, Medford in the next few weeks.





# Off Board Bus Fare Validation Pilot

- We are piloting validators between 7 and 9am at bus stops in South Boston that regularly have crowds of more than 50 passengers
  - Route 7 to the Downtown Crossing area
  - Route 9 to the Copley area
  
- Recent data shows dwell time reductions of 28% at these two stops
  
- The overall dwell time reduction for the route is much smaller because rear door boarding is only occurring at these two stops

