



Massachusetts Bay Transportation Authority

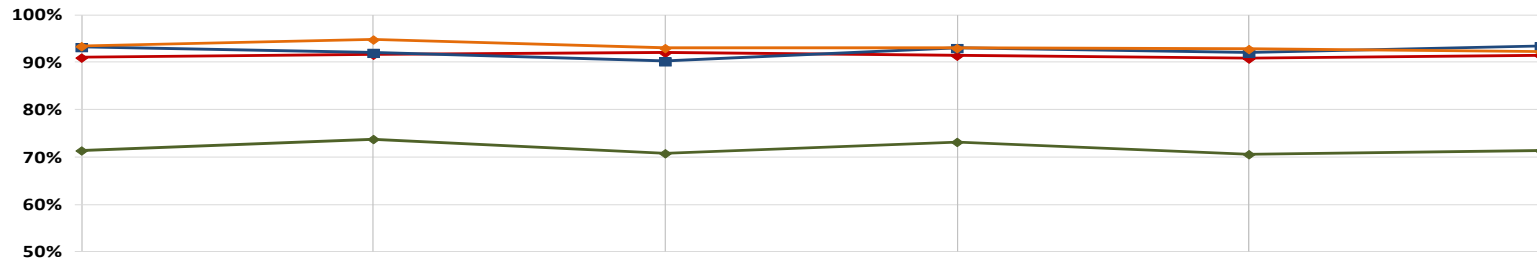
COO Remarks

August 8, 2016

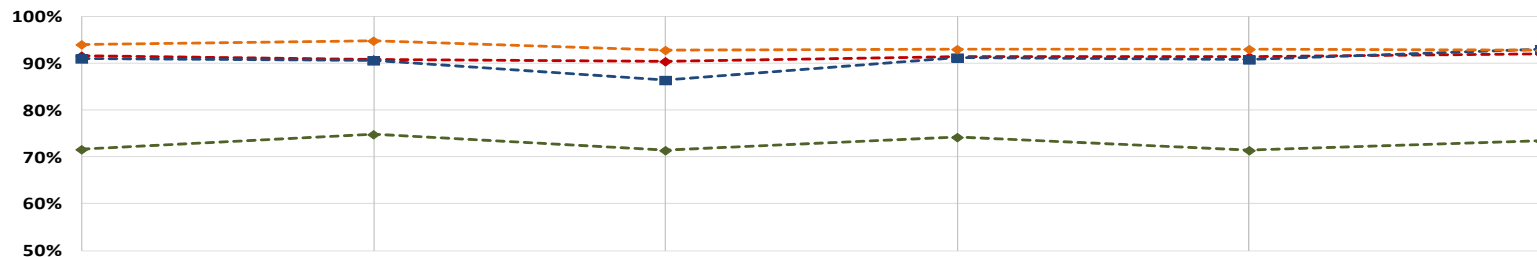


Weekly Reliability

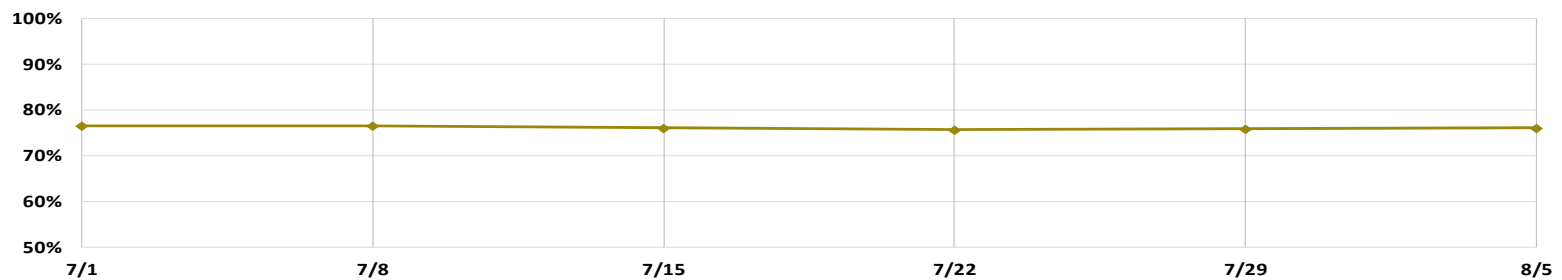
Rail Reliability: Peak



Rail Reliability: Offpeak



Bus Headway Adherence





Riverside Line Headway Adherence

Headway Adherence: Riverside Line





Other Discussion

- Voice of the MBTA
- Beacon Junction





Beacon Junction Project

- Symptoms - Passenger Delays
 - Track surface and alignment deterioration
 - Signal operation faults
- Cause - Poor Drainage
 - Standing water
 - Fouled (contaminated) ballast
 - Loss of signals
 - Advanced track condition deterioration
- Solution – Rebuild Track Structure
 - Full Depth track construction
 - Replacement of all switch machines and track cross-overs
 - Installation of new drainage system
 - Installation of new signal equipment



Beacon Junction





Beacon Junction Project

- First Weekend of work: July 29, 2016 – August 1, 2016
- Work scope: Switch 93 Green Line Eastbound track splitting for D (Riverside) Line and C (Beacon St.) lines between Kenmore and St. Mary's St. Stations
- Schedule: Work was performed over the weekend beginning with early access on Friday at 9pm and ending with a successful test train on Monday at 4:20am.



Beacon Junction

