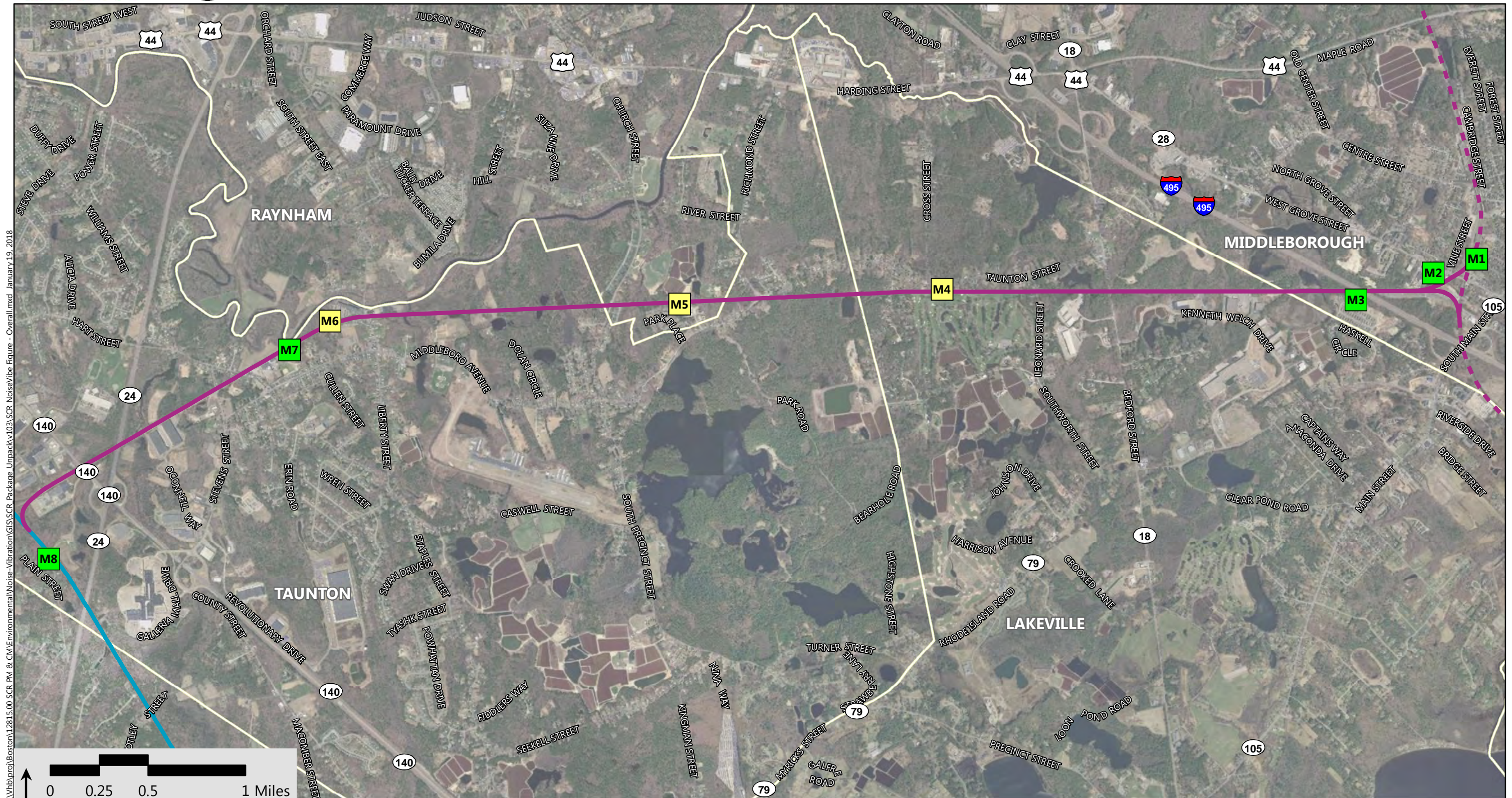


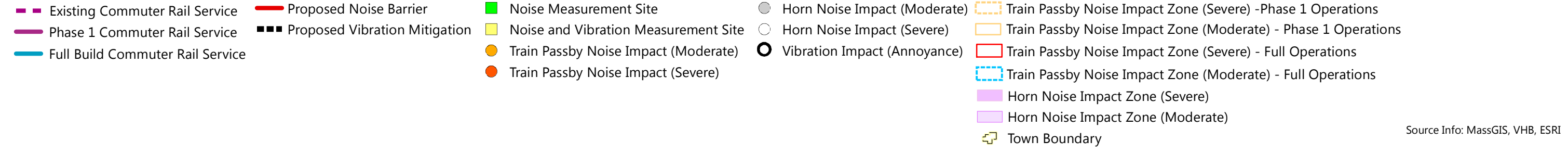
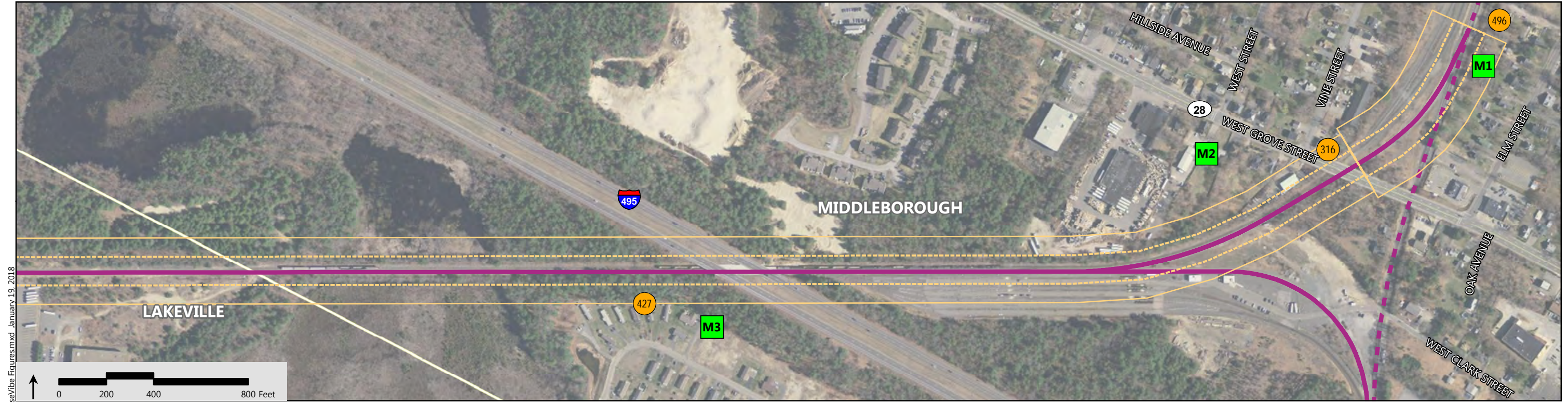
Figure 10-3: Noise and Vibration Measurement Locations

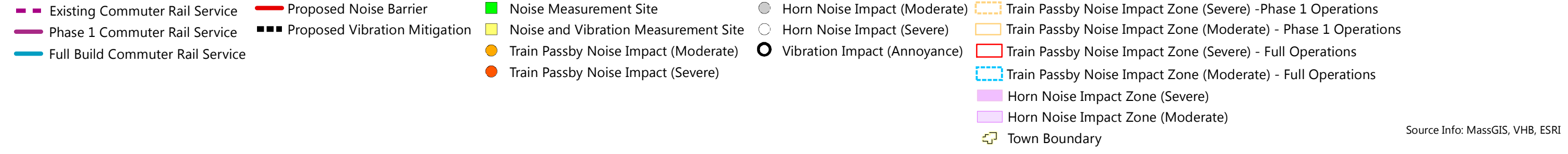
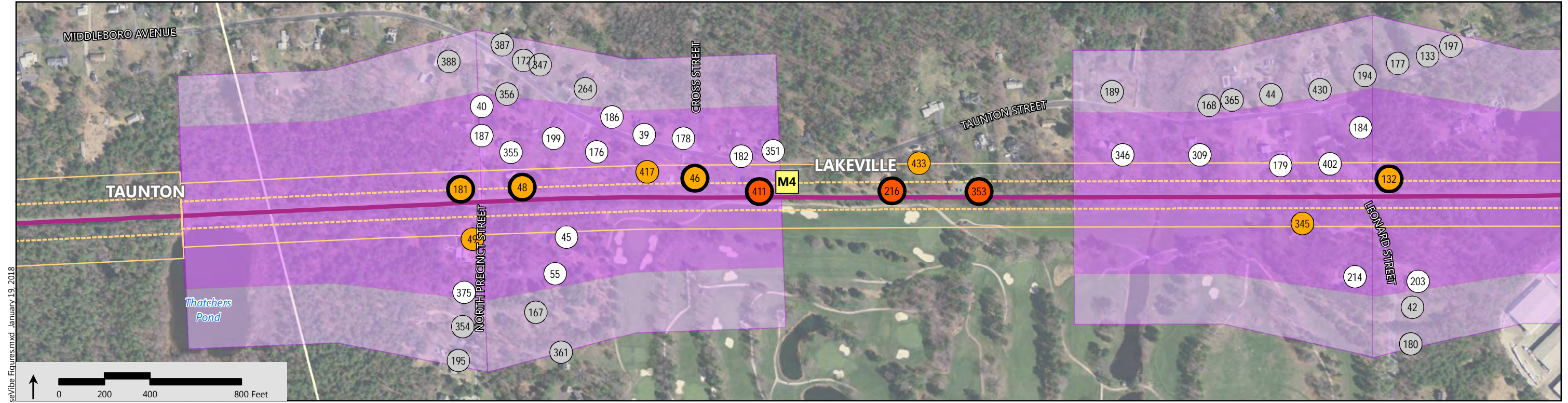


\\whb\proj\Boston\12815.00_SCR_PM & CM\Environmental\Noise_Vibration\GIS\SCR_Package_Unpack\103_SCR_NoiseVibe\Figure - Overall.mxd January 19, 2018



- Existing Commuter Rail Service
- Phase 1 Commuter Rail Service
- Full Build Commuter Rail Service
- Noise Measurement Site
- Noise and Vibration Measurement Site
- Town Boundary





Source Info: MassGIS, VHB, ESRI

