



**Massachusetts Bay  
Transportation Authority**

# GM's Report to the Board

---

Phil Eng, MBTA General Manager and CEO

June 12, 2025

**Choose Transit: Full  Ahead**

# Green Line GLTPS



# Developing Our Workforce | Increasing Efficiencies

- Providing training and tools to succeed.
- Cultivating institutional knowledge.
- Empowering employees.
- Taking the lead, becoming self-reliant.
- Reducing dependance on professional services.
- Delivering meaningful results.





# APM | Track

## *Annual Programmed Maintenance*

**Maeve Ragusin, PE**

Acting Deputy Director of Operations and Planning Delivery Group





# Green Line Diversion | GLTPS Updates

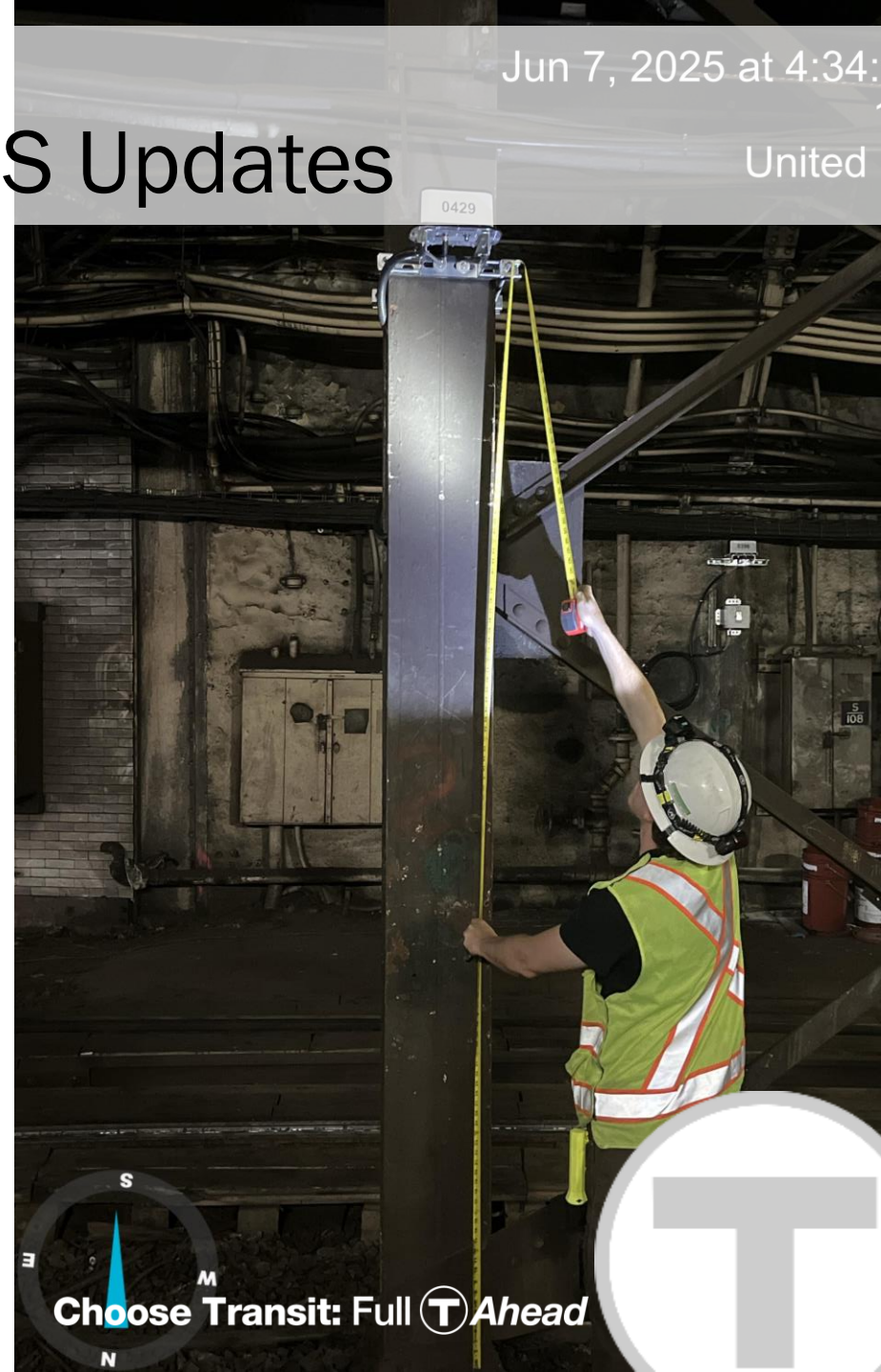
262 anchors installed North Station to the portals

- B | Park St to Blandford St
- C&D | Park to Kenmore
- E | Park to Northeastern Station

Each anchor - triple sign-off.

1. Installation per plans.
2. Quality standards met.
3. Track clearances met.

Upon verification and approvals, all locations green tagged.



Jun 7, 2025 at 4:34:

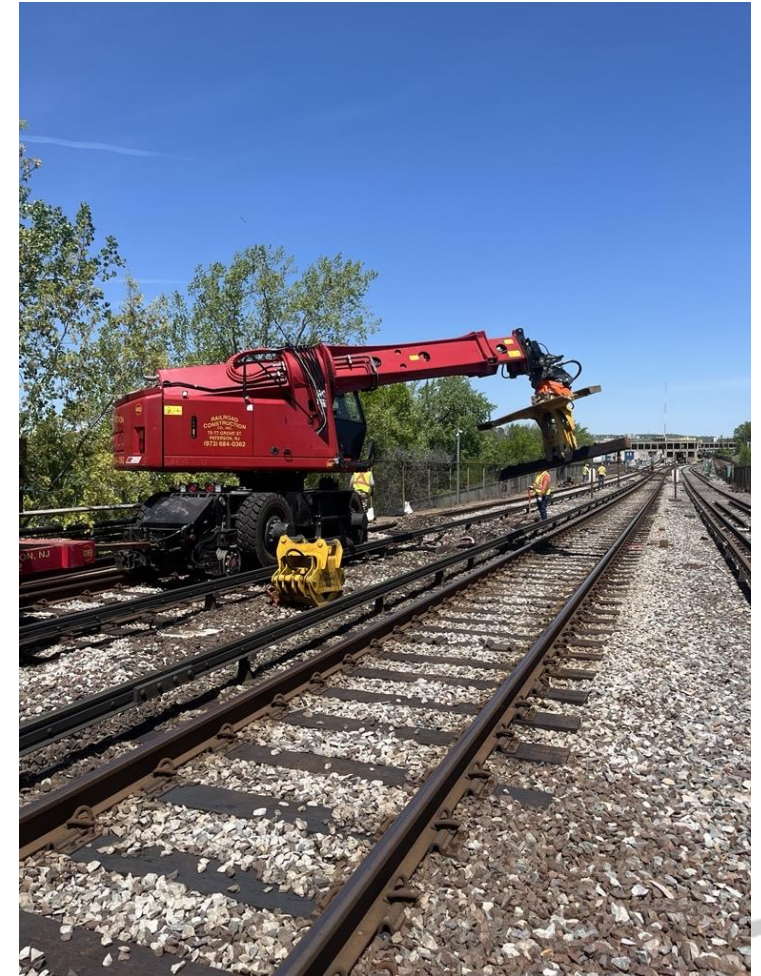
United





# Orange Line Maffa Work | May 9-18

- Goal of Increased Max Auth Speed to 55 mph
  - 37,000+ Track Feet of surfacing
  - 13,700 Linear Feet of rail installed
- Utilization of Newly Constructed Truck Pad





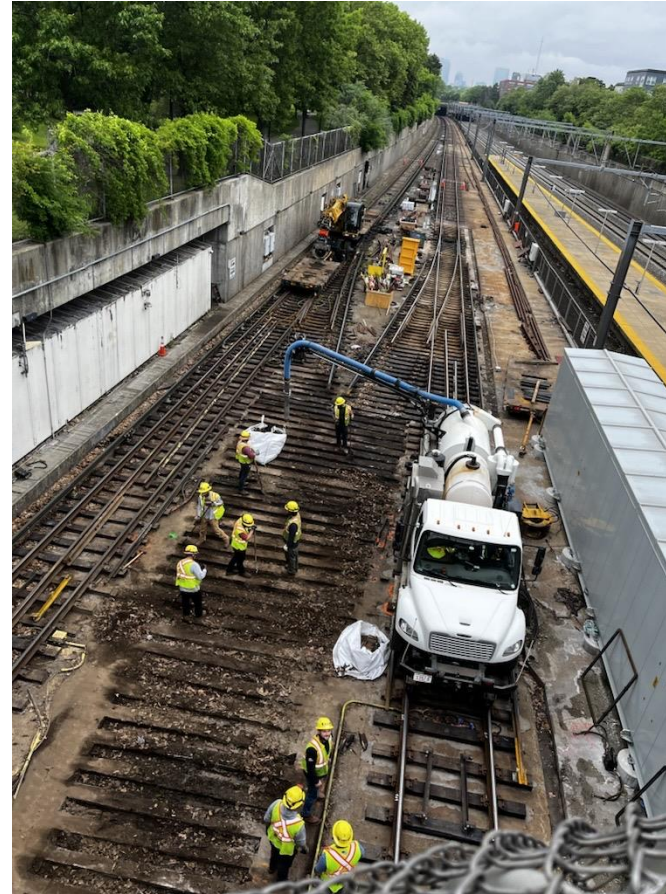
# Forest Hills Diamond | Value Add during Signals Program May 30 – Jun1

Limited Duration

Executed as Piggyback

Specialized Material

- *Concrete Embedded Timbers*





# Blue Line – Overcoming Challenges

Ongoing Work, Jun 7 - 15

Existing Conditions

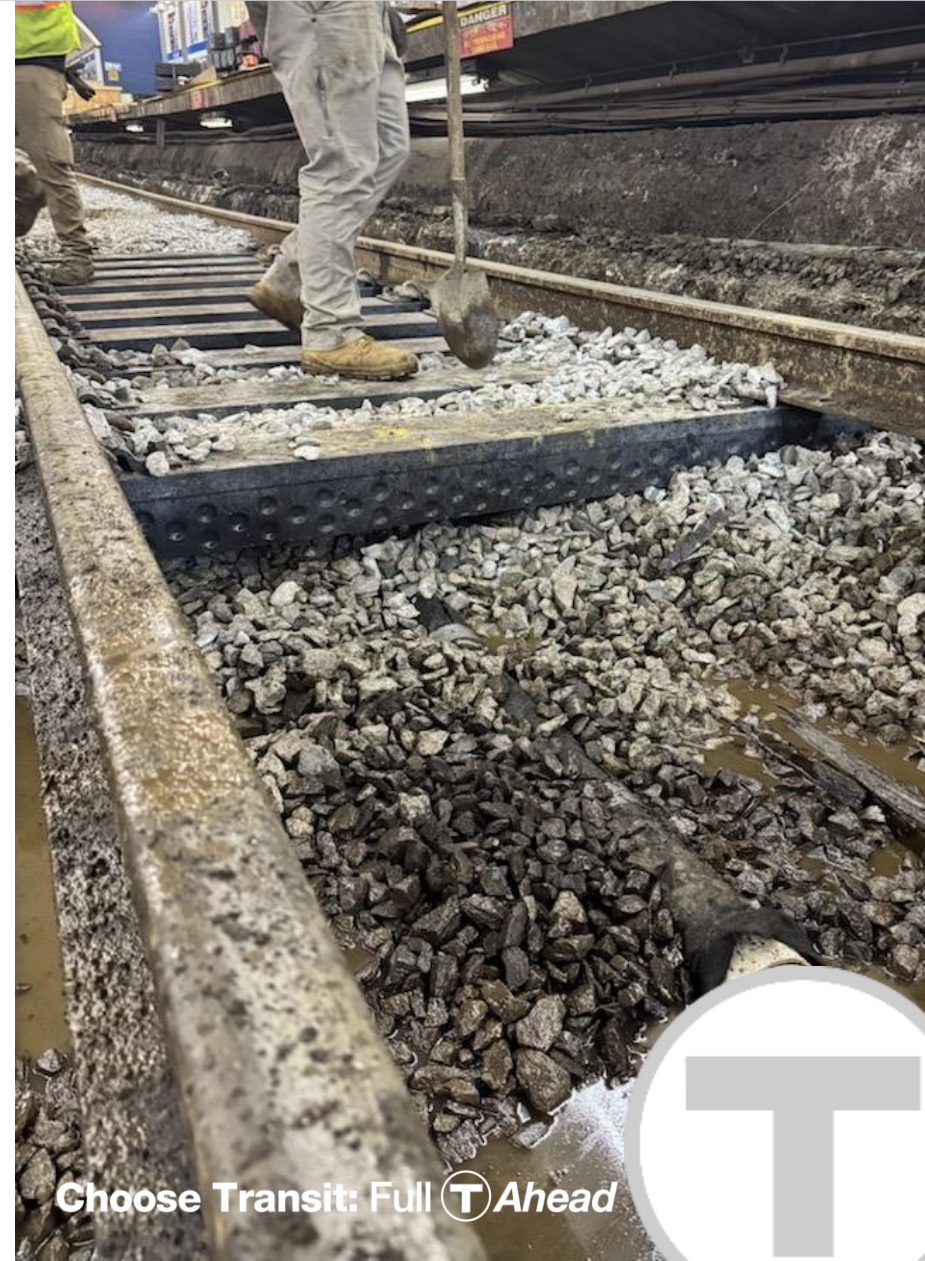
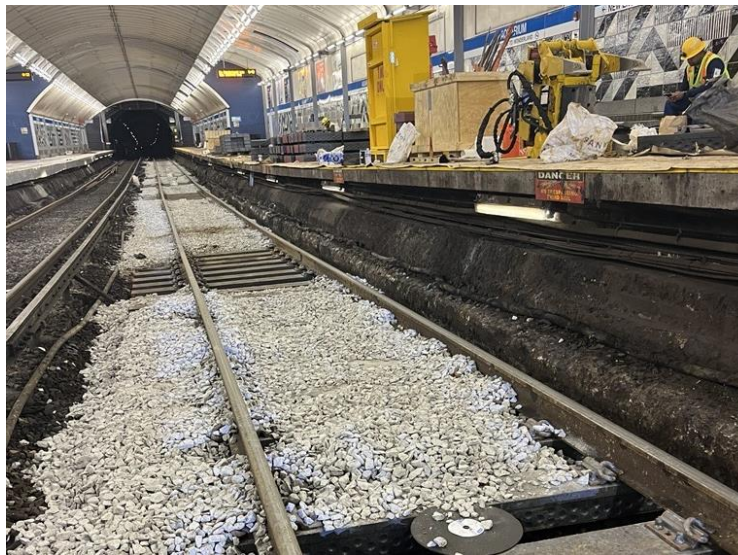
- *In-Field Material Alteration*
- *Drainage*

Access (Track Travel)

Confined Spaces

- *Specialty Equipment*

Bridge Deck Work



Choose Transit: Full  Ahead



Thank you



# South Elm St. Bridge Replacement

**Joe Czapiga**

*Senior Project Manager*

Choose Transit: Full  Ahead





ABC | ACCELERATED BRIDGE CONSTRUCTION

## S. Elm St. Bridge | Background Information





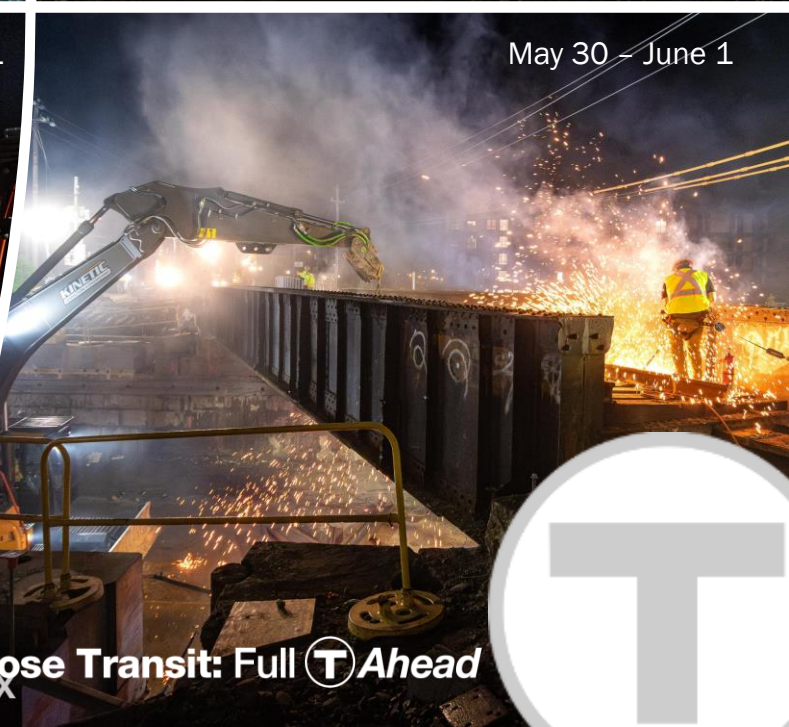
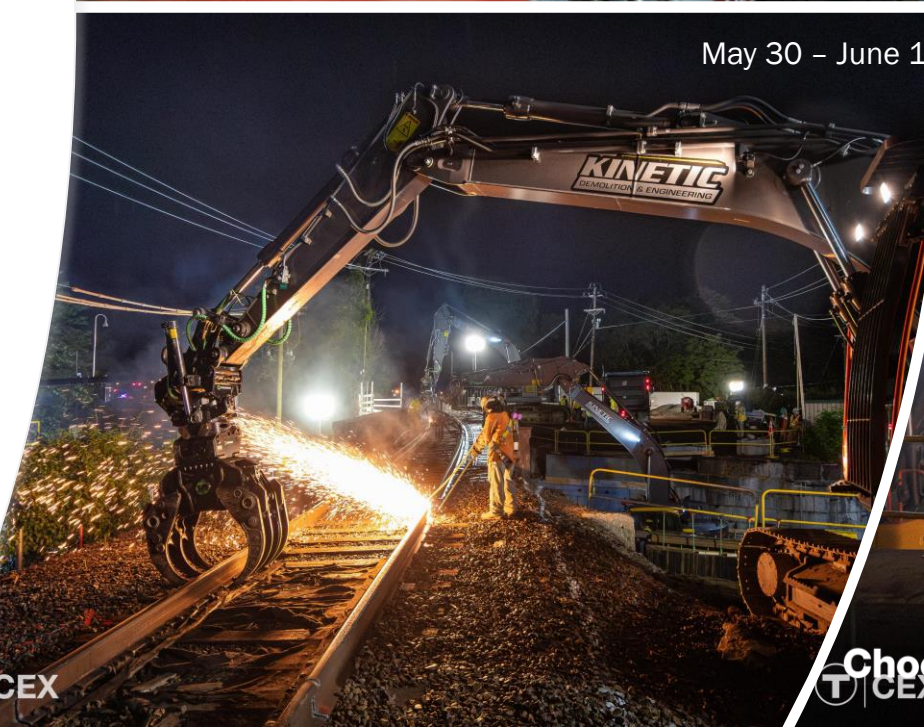
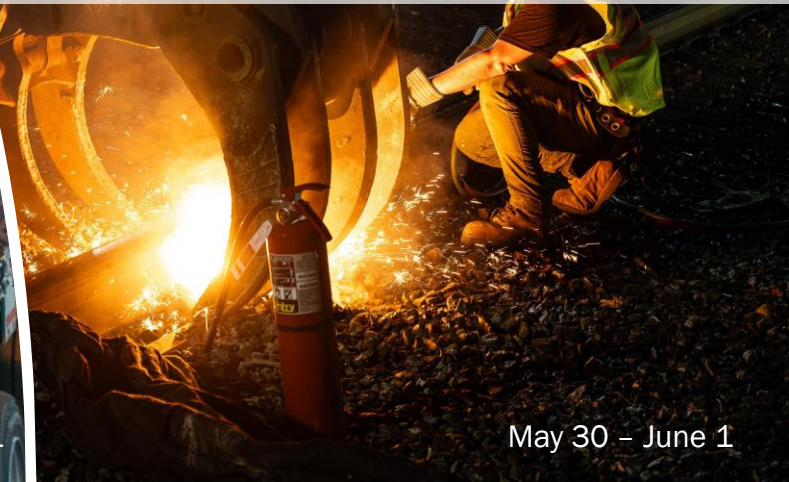
# S. Elm St. Bridge Existing Condition





# S. Elm St. Bridge | Haverhill Commuter Rail Line

- 52.5-hr bridge replacement.
- 194-ton steel superstructure.
- 3800 manhours.
- 200' new track. 750' surfaced.
- No service changes; shuttles.
- **Outside Agencies' Coordination:**  
Haverhill Mayor's office, Police, Fire, School Dept, DPW; MASS Highway; MEVA; Keolis; B&B/culvert; Manafort Brothers; Amtrak; CSX.
- Several contingency plans.
- NO safety findings.
- On time & On budget.



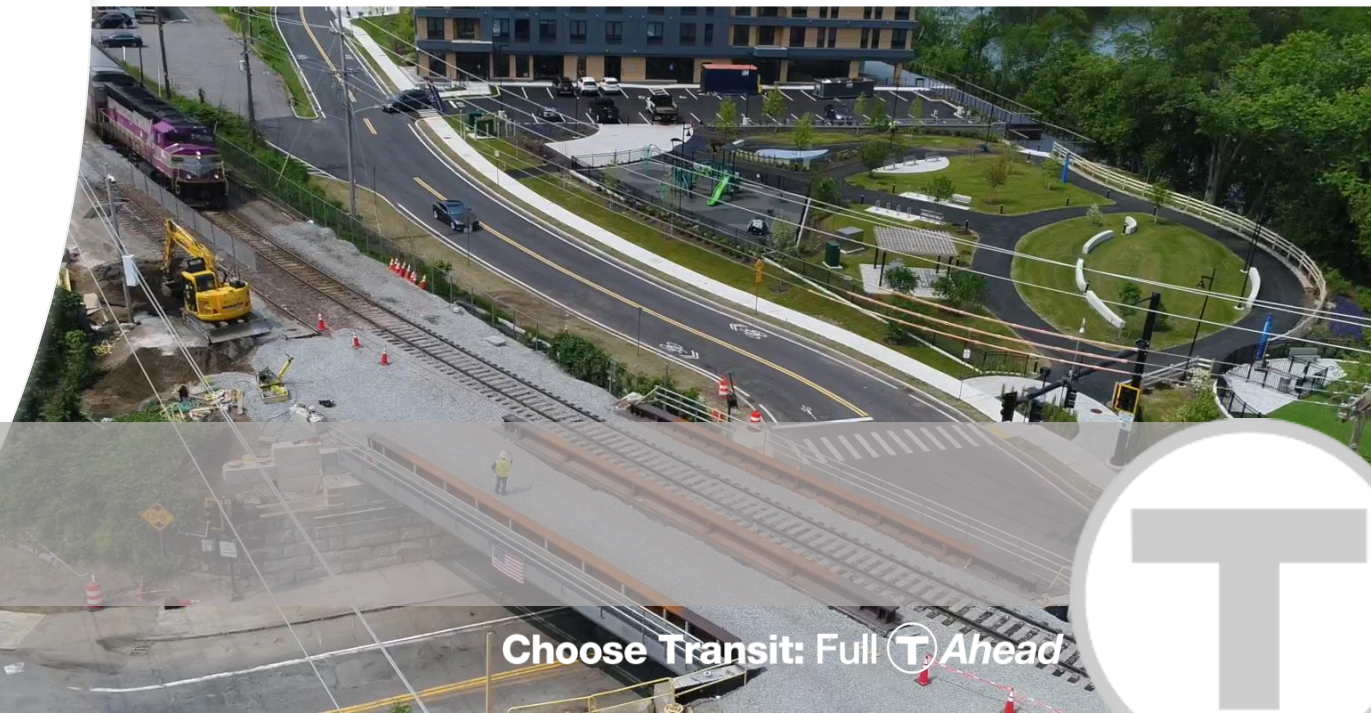


# SOUTH ELM BRIDGE REPLACEMENT

## Haverhill, Massachusetts







Thank You

# Fairmount Line Zero Emissions Project Update

- **Rolling stock RFP** Feb 2025, proposal due June 12, 2025.
- **Light Maintenance Facility** (LMF) Design, permitting and site investigation is underway. RFP ~fall 2025.
- **Layover and OCS solutions** - 8 tracks of electrified layover being designed.
- **Completion Target: 2028.**



Choose Transit: Full  Ahead



BOSTON HOSTS 1<sup>st</sup> TIME IN 31 YEARS

# APTA TRANSform Annual Conference 2025

- September 14–17, 2025.
- **Boston Convention & Exhibition Center** hosts most activities.
- **Omni Boston at the Seaport** hotel.
- **MBTA** | Tech Tours, Panels and Welcome Address, Sep. 15.
- ~2,500 to 3,000 attendees





# Track Improvement Program: Orange, Red, Green, + Blue Lines

Submitted by  
MBTA



2025 CMAA New England Chapter Mark H. Hasso Project Excellence and Scholarship Awards Program



MBTA's **TRACK  
IMPROVEMENT  
PROGRAM**  
awarded  
  
**Project  
Achievement Award**  
  
for  
  
**Program  
Management**

Choose Transit: Full  Ahead



# Asian Community Development Corp | Celebrating 38 Years



Heart of the Community  
Dim Sum Breakfast

SHARED VALUES

- Community-driven. Community-building.
- Trustworthy & Accountable.
- Inclusive & Collaborative.
- Innovative & Adaptive.
- Professional with high standards.



Choose Transit: Full  Ahead





T CEX



T CEX



T CEX

DEDICATION

# MBTA Bus Operators Honored for Perfect Attendance

Choose Transit: Full  Ahead





EXCEPTIONAL SERVICE

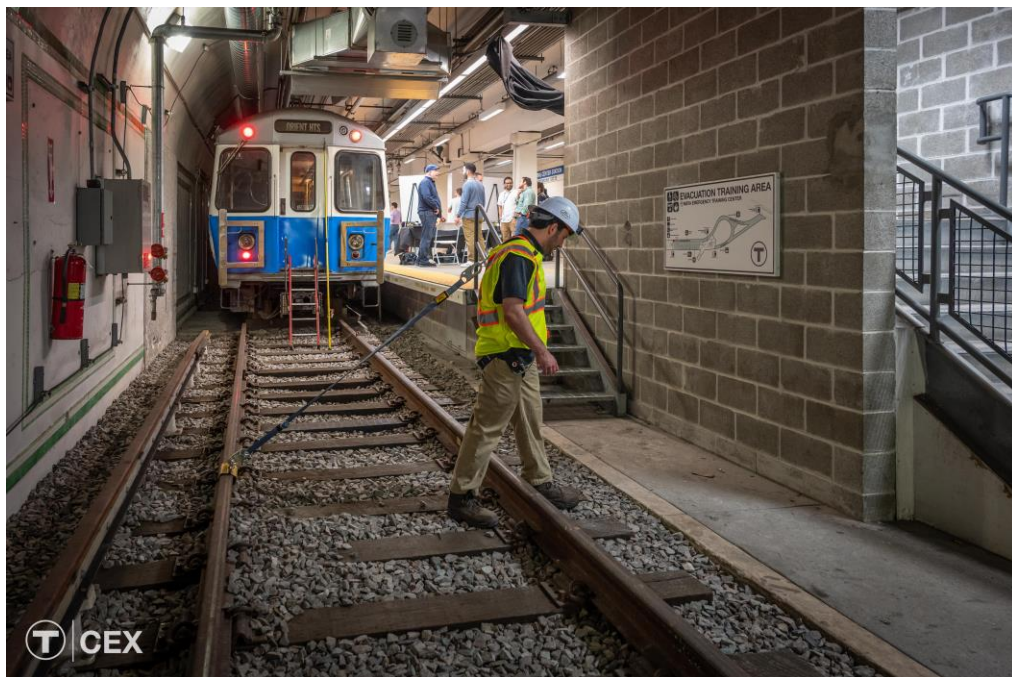
# MBTA Call Center | Integral to Customer Communications

One-Year Anniversary

In-house Services

Self-Reliant





# Innovation Expo

Platform gives employees opportunity to be creative, express ideas and implement.





June 2025

# National Safety Month



Choose Transit: Full  Ahead



# Choose Transit: Full Ahead



Choose Transit: Full  Ahead



# Capital Program Interns

Sam Zhou, Chief Engineer





# Thank You. Questions?

