



**Massachusetts Bay
Transportation Authority**

GM's Report to the Board

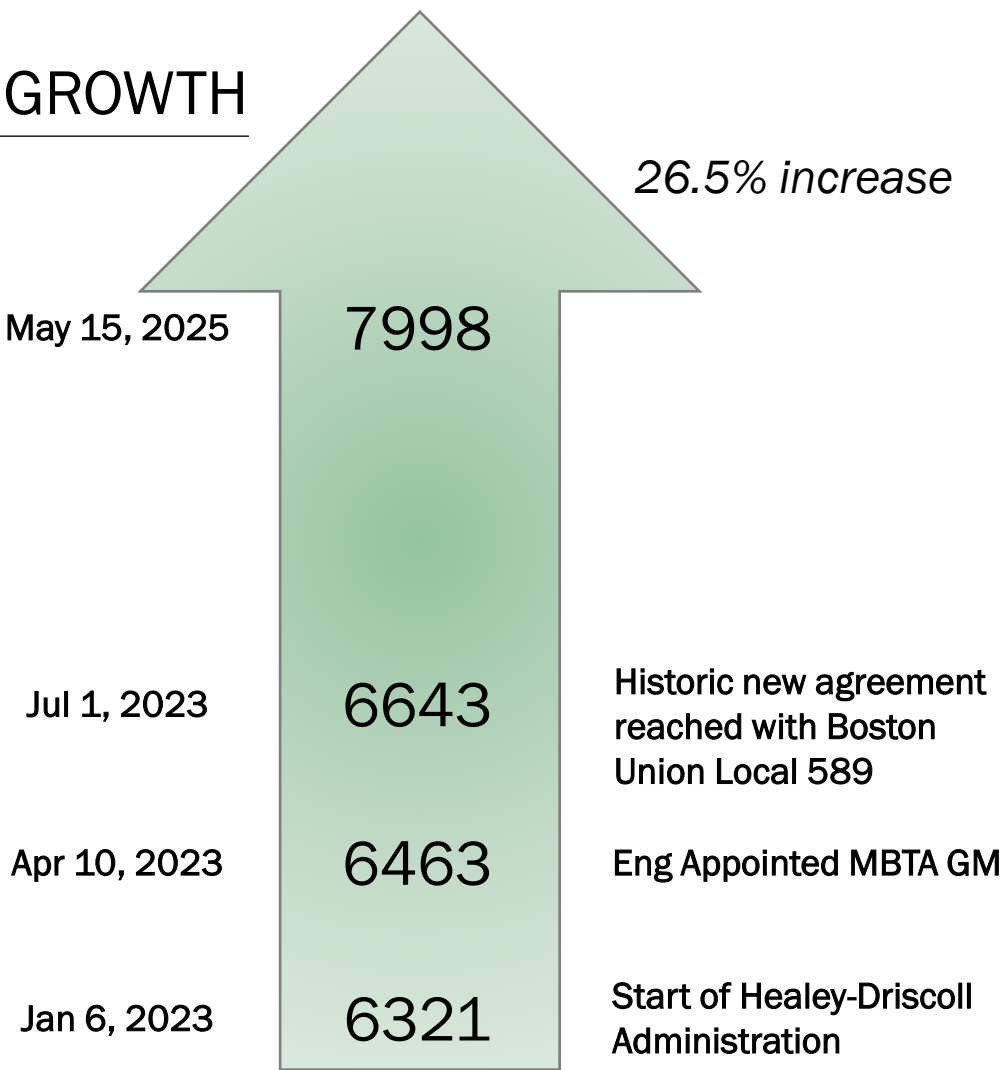
Phil Eng, MBTA General Manager and CEO

May 20, 2025

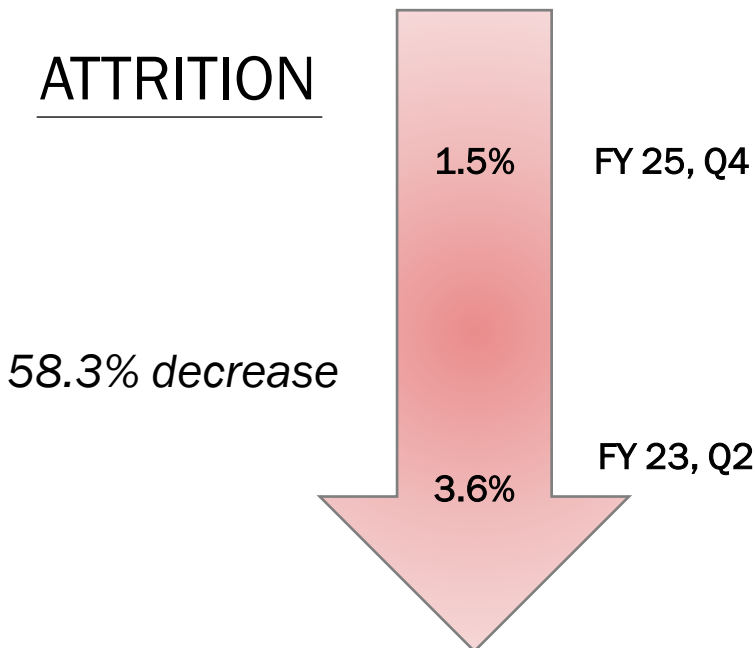
Choose Transit: Full  Ahead

Rebuilding & Investing in Our Workforce

WORKFORCE GROWTH



ATTRITION



Choose Transit: Full  Ahead



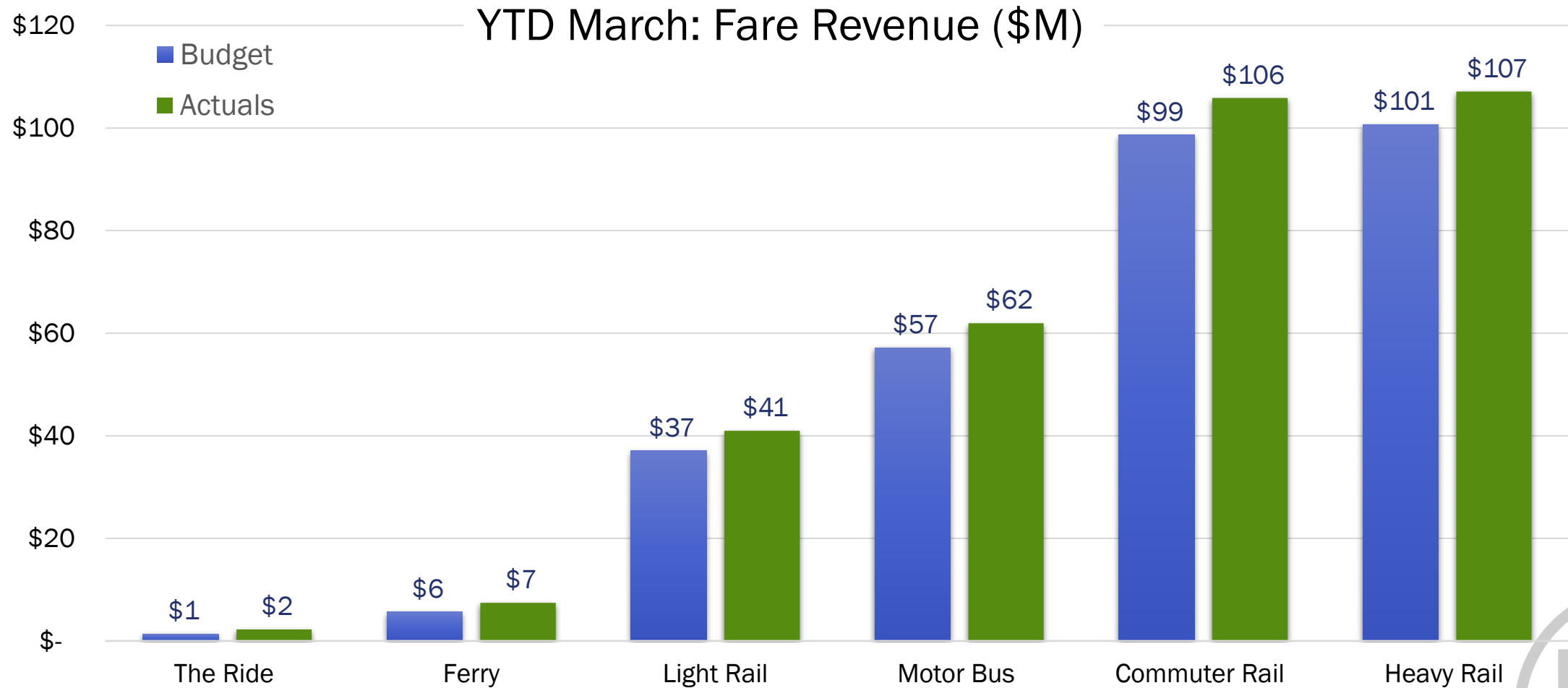
Favorable Trends

FY25 YTD

Ridership	TRENDING UP	↑
Fare Revenue	TRENDING UP	↑
Advertising	TRENDING UP	↑
Professional Service Expenditures	TRENDING DOWN	↓



All Modes | Fare Revenue Exceeds Expectations



Viable Transit Choice | CR Serving SE Massachusetts

- 🚂 **Committed to deliver rail service** to Southeastern Massachusetts.
- 🚂 **All weekend trips operated as scheduled** since mid April.
- 🚂 **SCR qualified personnel:** 54 conductors, 44 locomotive engineers, 7 conductor managers, 4 engineer managers.

New Bedford Whaling Museum

- 2025 YTD: **17% increase in attendance** vs 2024.
- **1st SCR month**, Boston Zip Codes (Brighton and Jamaica Plain) increased by **135%** compared to 2024.
- Highest Q1 visitation in **122 years** of the Museum.



Red Line: JFK
to Braintree

49,156 Ties

More than 99%
of Ties now
SOG

Choose Transit: Full  Ahead

Red Line Diversion | Ashmont to Braintree



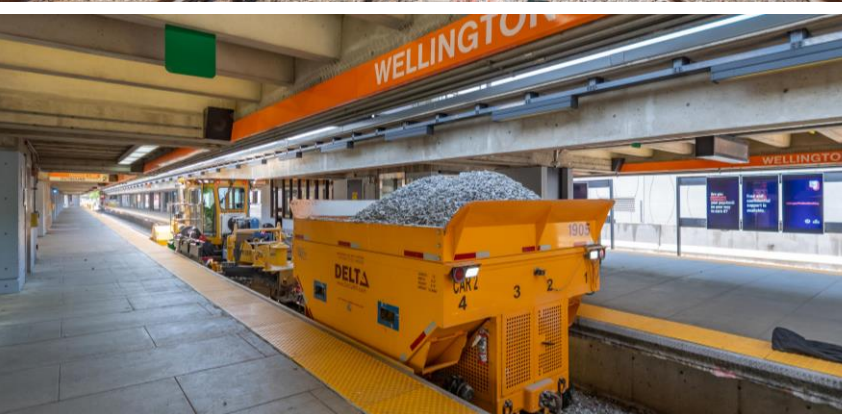
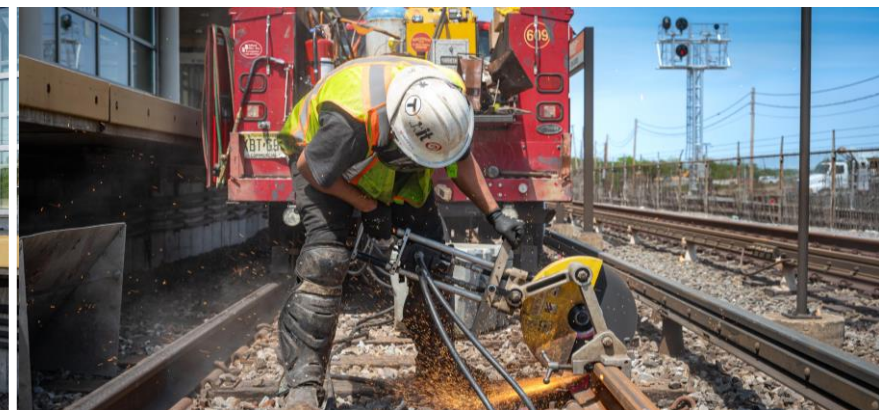
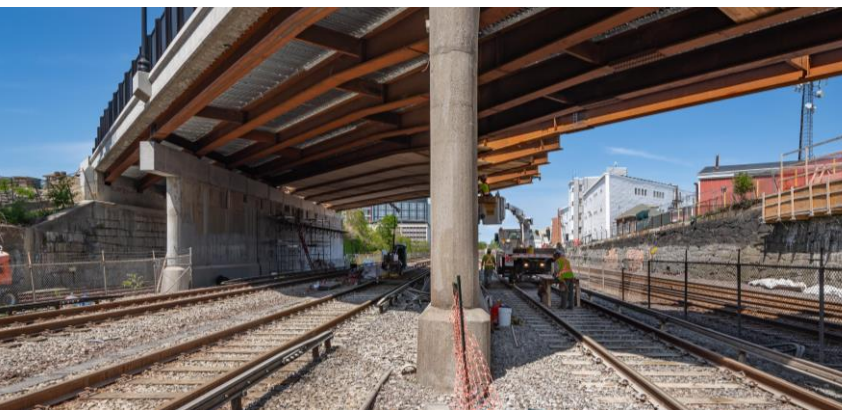
ASHMONT DIAMOND - BEFORE
SOUTHBOUND VIEW



ASHMONT DIAMOND - AFTER
NORTHBOUND VIEW TOWARDS ASHMONT

Committed to Restoring Infrastructure





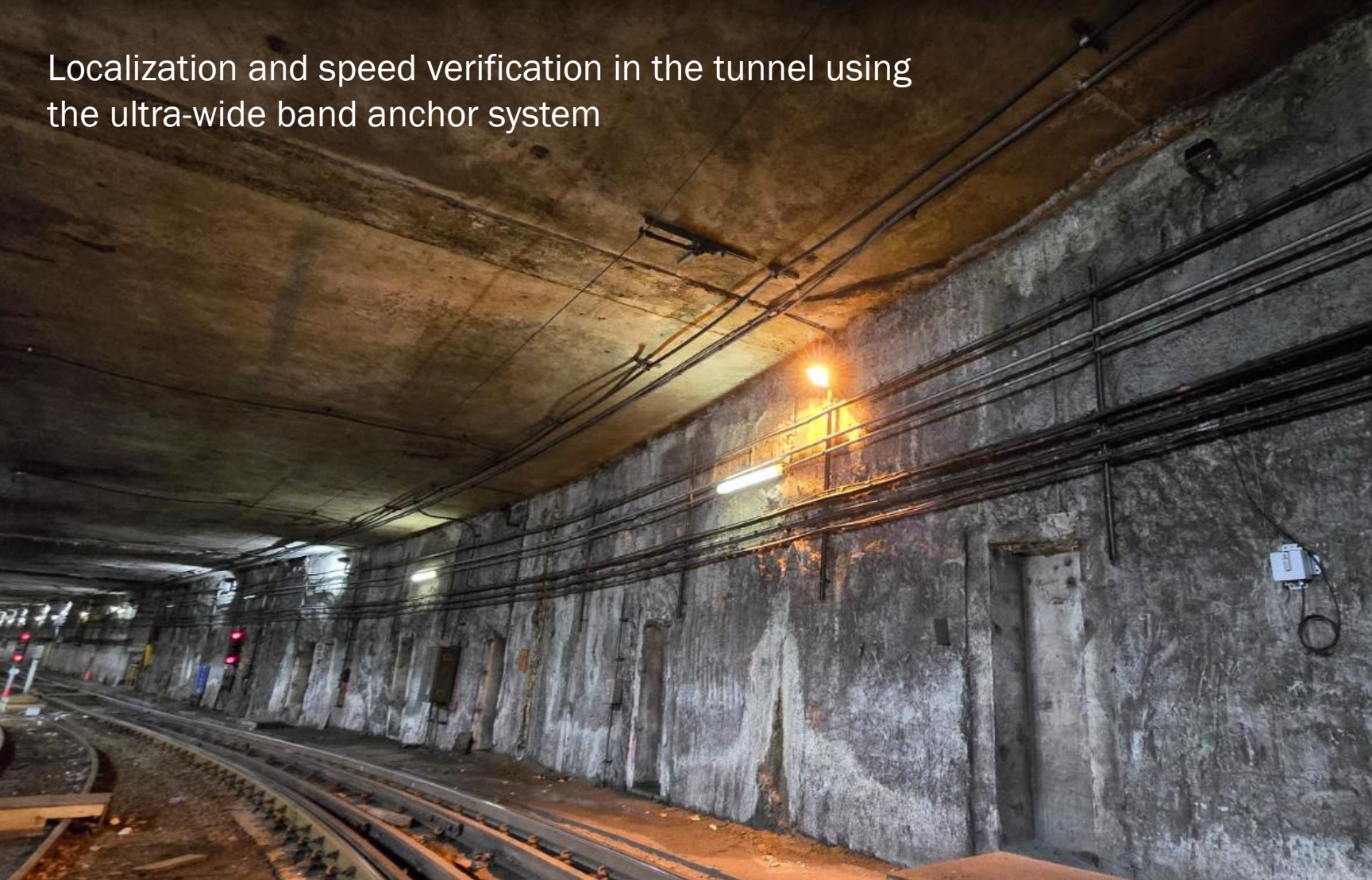
Orange Line Diversion | Oak Grove to North Station

LEVERAGED MASSDOT
MAFFA WAY BRIDGE
WORK TO RESTORE OL
INFRASTRUCTURE

- Replaced more than 15,600 rail ft.
- Completed special trackwork repairs at Oak Grove & Community College.
- Replaced more than 200 third rail insulators.
- Removed speed restriction SP-OL-000091 SB Wellington to Assembly.
- Replaced ~ 1470 ties.
- Resurfaced & tamped ~ 37,400 track ft.

Choose Transit: Full  Ahead

Localization and speed verification in the tunnel using the ultra-wide band anchor system



GLTPS | Positive Advancements for Testing & Readiness



World Cup 2026 | The Crucial Role of Public Transit

- ① First **Three-Nation** Host.
- ① First to feature 48 teams.



Host Countries	Canada, Mexico, U.S.
Main Host	United States
Host Cities	16 11 U.S. cities
Dates	June 11 – July 19
Matches	104 Boston hosts 7 matches

*Boston on the World's Stage*_____



“Nothing works without public transportation. I’m talking about housing, healthcare, and education,” said Senate Banking Committee Ranking Member Elizabeth Warren to MBTA CEO Phillip Eng and more than 650 APTA Legislative Conference attendees in Washington, DC.

#PublicTransitImpact #TransitIsEssential #APTALeg25
<https://lnkd.in/ebFCsfED>



APTA LEGISLATIVE
CONFERENCE 2025

#PublicTransitImpact #TransitIsEssential #APTALeg25
<https://lnkd.in/ebFCsfED>



You and 70 others

2 comments • 8 rep

Choose Transit: Full  Ahead

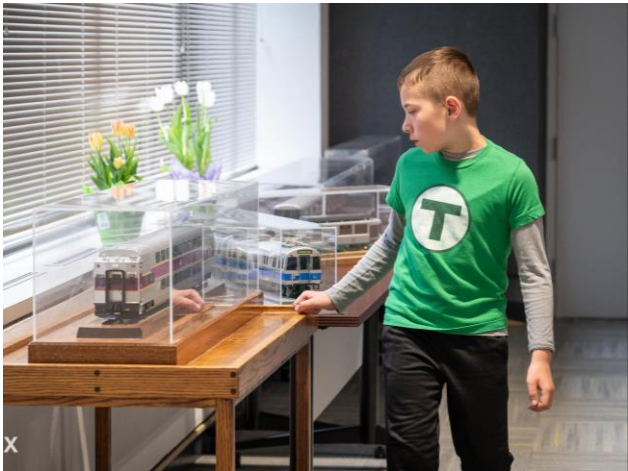
Choose Acceptance



Rory C., 9 years old



Choose Transit: Full  Ahead



PROGRESSIVE RAILROADING'S

Rising Star

- MBTA's Salina Martin
 - Chosen with 25 others from the North American railroad industry.
-

PROGRESSIVE RAILROADING'S
**RISING
STARS**

Choose Transit. Full  Ahead

Asian American Native Hawaiian Pacific Islander

- Partners in Transportation AAPI Event May 14, 2025.
- Massport & MBTA fireside chat with Rich Davey May 6, 2025.
- AANHPI contributions and leadership examples.
- Setting an example for others - making a difference.

Asian American
& Pacific Islander
Heritage Month
May 2025

*Make Us
VISIBLE*

FREEDOM
RIDE

SSPORT CHAT WITH RICH DAVEY



Choose Transit: Full  Ahead

Choose Transit: Full Ahead



Feb 12, 2025



Feb 12, 2025



Mar 25, 2025



Apr 10, 2025



May 5, 2025

Choose Transit: Full  Ahead



Thank You. Questions?

