



Massachusetts Bay Transportation Authority

Safety Briefing

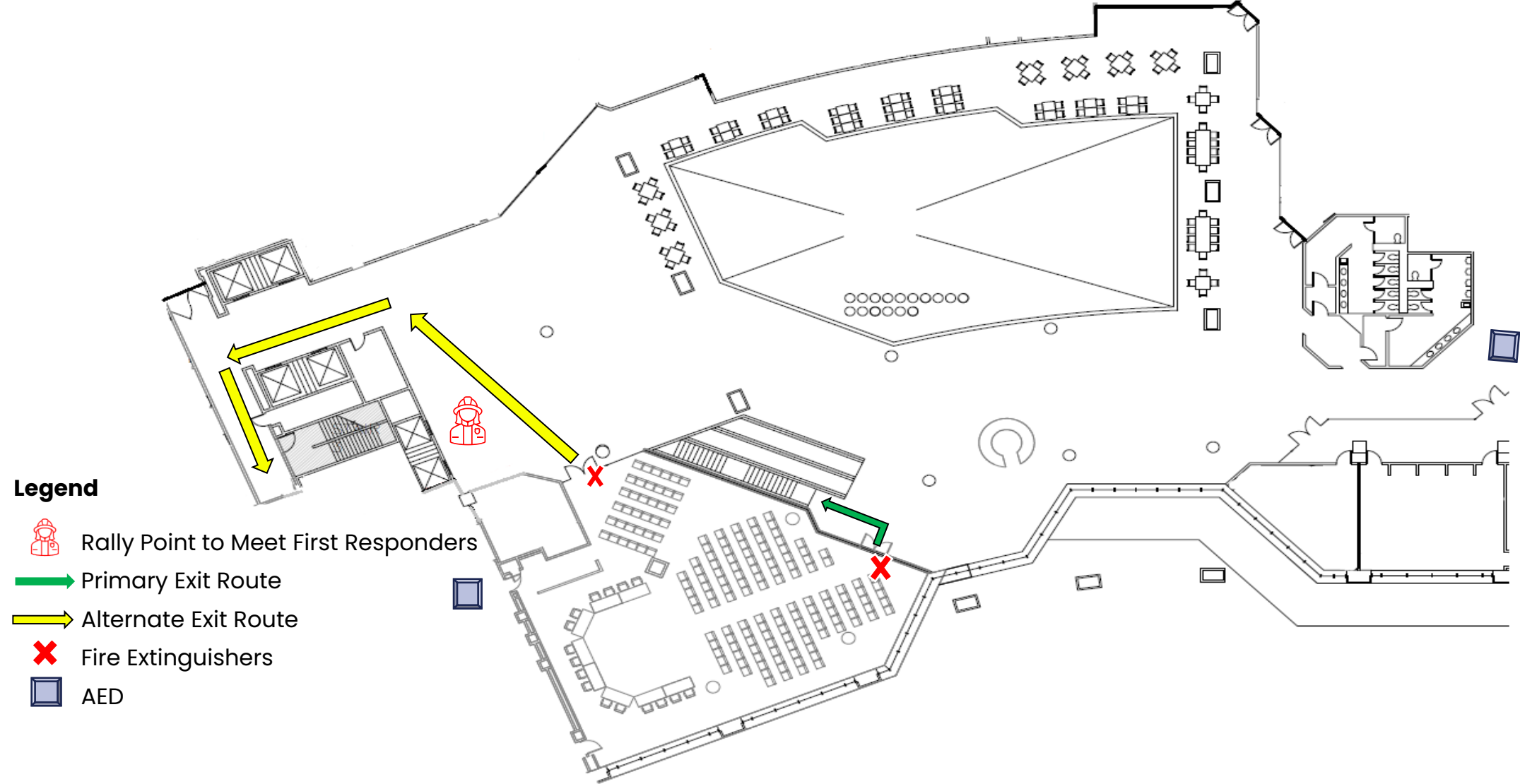
Darrin McAuliffe






Deputy Chief of Staff

MBTA Board of Directors Meeting

May 20, 2025

Safety Contact



- Legend**
-  Rally Point to Meet First Responders
 -  Primary Exit Route
 -  Alternate Exit Route
 -  Fire Extinguishers
 -  AED



Commuter Rail Safety Tips

MBTA's expanding services and National Transportation Month make it a good time to remember some important safety tips:

- Stand back from the edge of the platform behind the painted or raised markings.
- Let others exit before you board
- Remain seated while the train is in motion; if standing, hold the handholds or handrails.
- Always look both ways when crossing the tracks and only use designated crossings.

www.oli.org
www.mbtta.com



SAFETY TIPS:

Risks Around Rails Are Real

- Never walk on tracks; it's illegal to trespass and highly dangerous.
- Trains overhang tracks. Stay 15 feet back from the tracks.
- Today's trains are quieter than ever, producing no telltale "clackety-clack" sounds.
- Refrain from texting, using headphones or other distractions that would prevent you from hearing an approaching train; never mix rails and recreation.



Thank you!

