



**Massachusetts Bay
Transportation Authority**

Safety Updates

Timothy P. Lesniak; Chief Safety Officer

Ryan D. Coholan; Chief Operating Officer

MBTA Board of Directors Meeting

May 20, 2025



Discussion Topics

- Grade Crossing Safety
- GLTPS
- Recent Incidents and Corrective Actions

MBTA Commuter Rail Grade Crossings

- **264 grade crossings across 800+ miles of track**
 - MBTA Commuter Rail tracks built on a legacy system with long-standing, established travel routes
- **With grade crossings come inherent risks – primarily, risk of collision with motorists, bicyclists, and pedestrians**
- **To mitigate the hazards associated with rail grade crossings and prevent injuries and fatalities, the MBTA:**
 - Abides by all FRA regulations for rail grade crossings, including requirements for mandated equipment such as warning systems and barriers
 - Partners with DPU, which has state regulatory authority over all public highway rail grade crossings in Massachusetts, to maintain safe crossings
 - Continues to proactively implement measures to protect motorists, pedestrians, and train operators



The “three Es” to improve grade crossing safety:

1. **ENGINEERING:** technological and traffic control upgrades to manage traffic flow, increase warnings, and reduce risk (incl. eliminating crossings where possible)
2. **EDUCATE:** increase public awareness of rail safety
3. **ENFORCEMENT:** preparing law enforcement and first responders to use proper safety techniques

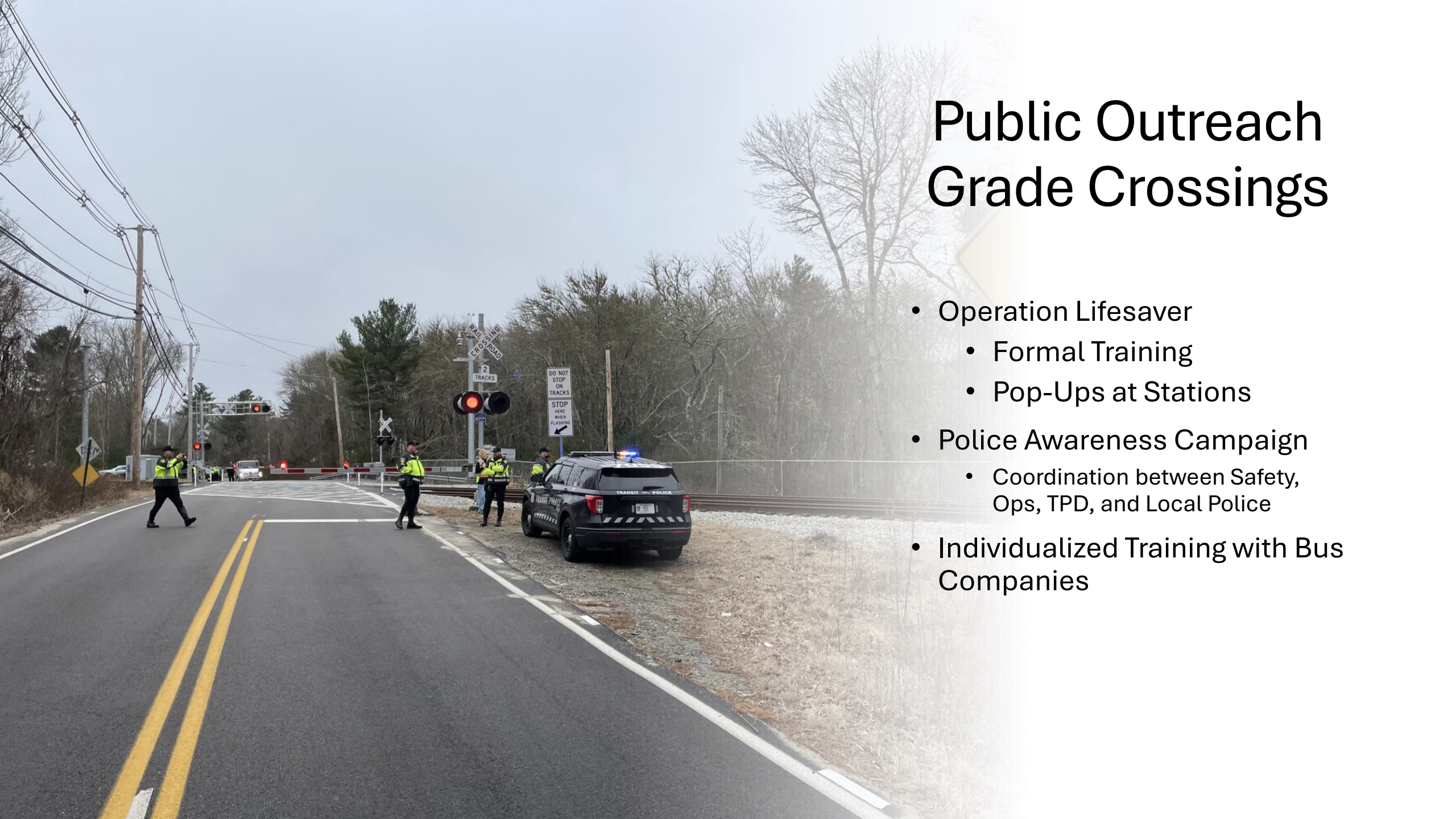
Proactive Safety at Grade Crossings

- Markings on Pavement at Crossings
- Delineators to show edge of road through crossings
- Waze Railroad Crossing Notifications



Public Outreach Grade Crossings

- Operation Lifesaver
 - Formal Training
 - Pop-Ups at Stations
- Police Awareness Campaign
 - Coordination between Safety, Ops, TPD, and Local Police
- Individualized Training with Bus Companies



Year to Date Commuter Rail Grade Crossing Incidents

- 1/17 – Sutton St, North Andover, Western Route
- 2/6 – Grove St, Franklin, Franklin Branch
- 2/23 – Conant St, Concord, Fitchburg Route
- 2/26 – Will Dr, Canton, Stoughton Branch
- 2/27 – Pine St, Canton, Stoughton Branch
- 4/9 – Pine St, Canton, Stoughton Branch
- 4/30 – Centre Ave, Abington, Kingston Line
- 5/3 – Beachwood Rd, Cohasset, Greenbush Branch

GLTPS Update

- Final Design and Production Readiness Demonstration completed Sunday May 11
- Working with Piper to identify interior and exterior equipment locations
- Currently on track to complete Phase 1 by end of year



Recent Incidents and Corrective Actions

Questions?
