



**Massachusetts Bay  
Transportation Authority**

# Winchester Center Station Accessibility Improvements: Construction Update

---

Public Information Meeting

January 22, 2025

Nathan Rae, MBTA Senior Project Manager

# Thank You for Participating!

---

- Thank you for joining the meeting! We appreciate your participation.
- This meeting will be recorded so that it can be shared it with the people that were unable to join.



# Diversity and Civil Rights

## English

- All MBTA activities, including public meetings, are free of discrimination. The MBTA complies with all federal and state civil rights requirements preventing discrimination on the basis of race, color, national origin, limited English proficiency, and additional protected characteristics. We welcome the diversity from across our entire service area. If you have any questions or concerns, please visit [www.mbta.com/titlevi](http://www.mbta.com/titlevi) to reach the Office of Diversity and Civil Rights.

## Spanish

- Todas las actividades de MBTA, incluidas las reuniones públicas, están libres de discriminación. La MBTA cumple con todos los requisitos de derechos civiles federales y estatales que impiden la discriminación por motivos de raza, color, origen nacional, dominio limitado del inglés y características protegidas adicionales. Damos la bienvenida a la diversidad de toda nuestra área de servicio. Si tiene alguna pregunta o preocupación, visite [www.mbta.com/titlevi](http://www.mbta.com/titlevi) para comunicarse con la Oficina de Diversidad y Derechos Civiles.

## Chinese

- MBTA 的所有活动，包括公开会议，都没有歧视。MBTA 遵守所有联邦和州公民权利要求，防止基于种族、肤色、国籍、有限的英语能力和其他受保护特征的歧视。我们欢迎来自我们整个服务领域的多样性。如果您有任何问题或疑虑，请访问 [www.mbta.com/titlevi](http://www.mbta.com/titlevi) 联系多元化和民权办公室



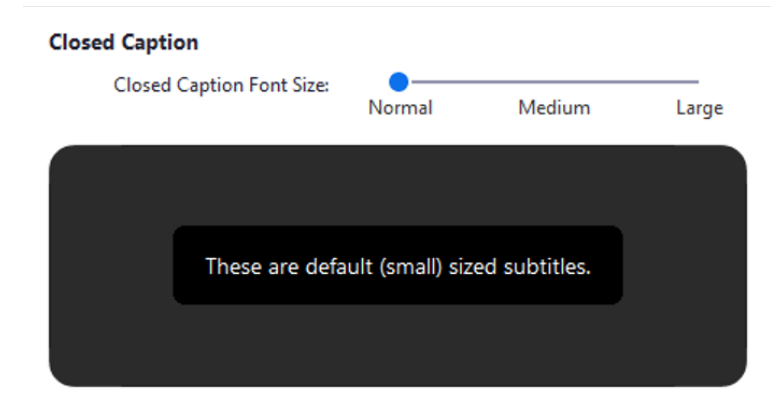
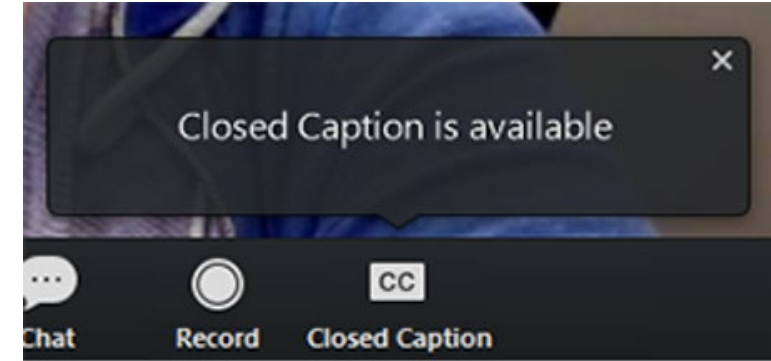
# Closed Captions

Click **Closed Caption** to start viewing closed captioning

**Tip:** Click and drag the closed captioning to move its position in the meeting window.

To adjust the caption size:

- Click the upward arrow next to **Start Video / Stop Video**.
- Click **Video Settings** then **Accessibility**.
- Move the slider to adjust the caption size



# Use the Chat for Technical Questions

## English

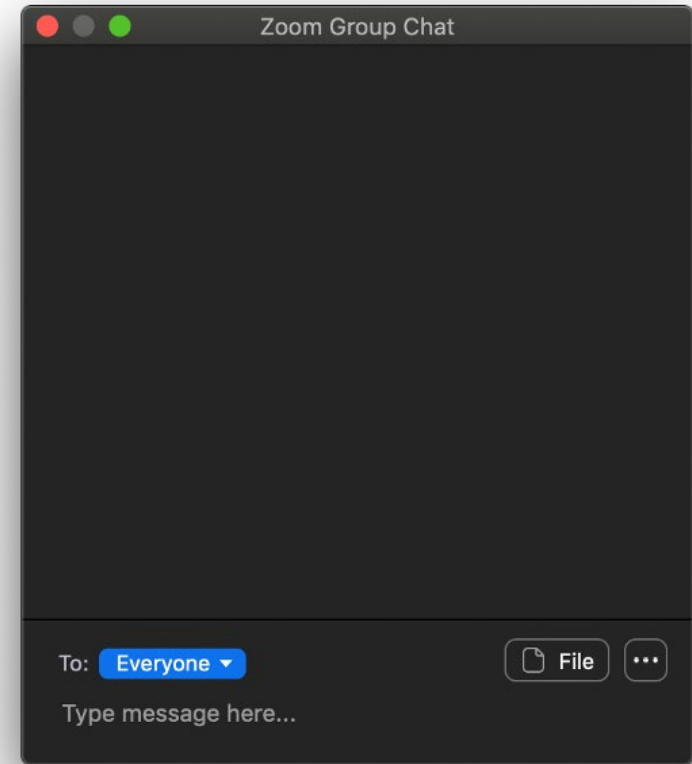
If you have a technical question about Zoom or the features of the meeting, please use the chat function. Our technical assistant labeled “Winchester Station Project Team” will attempt to troubleshoot your problem and get back to you.

## Spanish

Si tiene una pregunta técnica de zoom o los enseres de zoom durante la junta. Favor de usar el chat. Nuestro asistente técnico bajo el nombre de “Zoom Tech” le ayudará con su problema.

## Chinese

如果您有关于Zoom或者会议功能的技术问题，请使用对话框的聊天功能。我们的技术辅助员会回复您并尽力帮您解决问题。



# Agenda

- Project Overview
- Partial Station Opening
- Recent Construction Activity
- Schedule Impacts
- Schedule Update
- Upcoming Construction
- Project Contacts



# Project Overview

- Full Station Reconstruction:
  - Two new fully accessible, high-level, side platforms with canopies.
  - Three new elevators, two new ramps and three sets of covered stairs.
  - New lighting, signage and wayfinding, security cameras, and other amenities.
  - New tracks, ties, ballast, bridge plates and communication duct banks.
- Total Construction Cost: \$50 Million



# Partial Station Opening

- Winchester Center **partially** reopened on **Oct 1, 2024**
  - Two new fully accessible, high-level, side platforms with canopies.
  - Two new elevators, one ramp and three sets of covered stairs.
  - New lighting, signage and wayfinding, security cameras, and other amenities.
  - New tracks, ties, ballast, bridge plates and communication duct banks.
- Estimated Daily ridership: ~150 on/offers





# Recent Construction Activity, Winter 2024 - 2025



North Elevator Shaft Construction



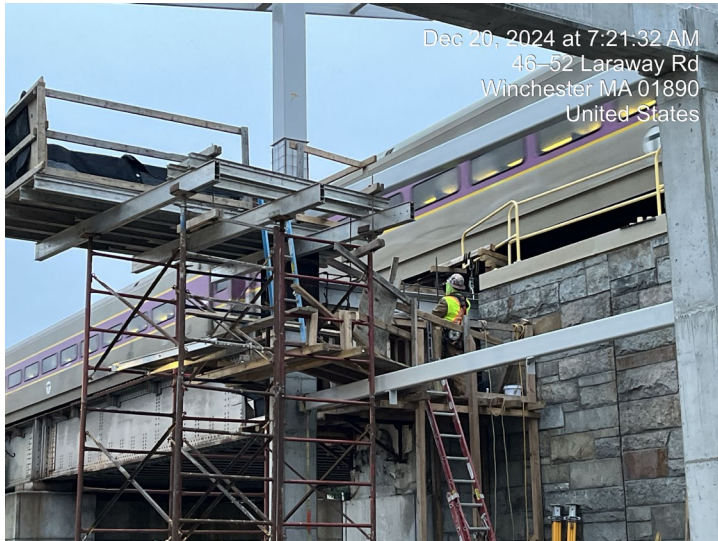
Inbound Platform Ramp Construction



Platform Beam Placement over Quill Rotary



# Recent Construction Activity, Winter 2024 - 2025



Laraway Rd Ramp Construction



Window Installation, North Elevator



Concrete Platform Beam Work



# Schedule Impacts

---

- Schedule Impacts:
  - Partial Opening – focused Contractor Labor on partial station opening activities, which resulted in Final completion activities falling behind.
  - Many remaining critical path activities can only be performed during warmer temperatures such as concrete finishing, painting, and sealants.
  - Lost track time to various surrounding rail projects:
    - North side Commuter Rail Maintenance work – replacement of rail ties along entire length of Lowell Route
    - West Medford Mini-High Platforms
    - Fiber optic resiliency project



# Project Schedule Updates

---

Winchester Station is now scheduled to fully reopen **Spring 2025**. Full Station reopening includes:

- Full platform reopening of the north half of the station – inbound and outbound platforms
- One redundant elevator on the outbound platform (3 total).
- Completion of work on Laraway Road.
- Punch list work, landscaping, and Final completion are scheduled for **Summer 2025**.



# Upcoming Construction: What To Expect this Winter/Spring 2025

---

- Electrical, Concrete, and plumbing work:
  - Focusing on the north end of station on both platforms.
  - Elevator (outbound), and staircase construction on the north end of the station.
  - Neighbors can expect continued noise from construction activity including heavy equipment and machinery.
- Requests for night work are forthcoming. The MBTA intends to limit nightwork as much as possible. Construction advisories will be distributed ahead of any scheduled night or weekend work.



# Upcoming Construction – Winter/Spring 2025

Activity	Dec	Jan	Feb	Mar	Apr	May	June	July	
<b>Platform Level</b> <ul style="list-style-type: none"> <li>Platform panels, Canopy Steel, Electrical, Lighting, Communications, Station Signage, Benches,</li> </ul>	Active								
<b>Behind Thompson Street &amp; Quill Rotary Sections:</b> <ul style="list-style-type: none"> <li>Plumbing, Electrical, Communications</li> <li>Elevator, Stairs</li> <li>Construction of Rotary Pier</li> </ul>	Active								
<b>Laraway Section:</b> <ul style="list-style-type: none"> <li>Structural Steel, Ramp, Lighting, Signage.</li> <li>Salvaged Stone, Landscaping, Irrigation, Road and sidewalk work</li> <li>Punch list items</li> </ul>	Active								



# Project Contact Information

- **Project Email Address:**  
[winchesterstation@MBTA.com](mailto:winchesterstation@MBTA.com)
- **Construction Hotline:** (781) 218-9717  
For construction-related concerns and questions.
- **Project Website:**  
[www.mbta.com/winchesterstation](http://www.mbta.com/winchesterstation)



# Raising Your Hand

- Please use Zoom’s “Raise Hand” feature to indicate if you have a comment
  - All participants are muted upon entry so that only the presenters can be heard. Please raise your hand and the meeting host will ask you to unmute so that you can state your question/comment.
- Por favor de usar el encero de levantar la mano en Zoom para indicar que usted tiene algún comentario o pregunta.
  - Todos los participantes en esta llamada están silenciados, para que solo los presentadores se puedan oír. Cuando usted levante su mano, manda un alerta a la moderadora que quisiera hablar. La moderadora le quitará el silencio para que pueda hacer su pregunta o comentario.
- 如果您有评论，请使用 Zoom 的“举手”功能。
  - 所有的参与者在进来时都被静音了以便于只听到演讲者。请举手，会议主持人将让您取消静音，以便您陈述您的问题/评论。



To speak, click  
**“Raise hand”**



**Send a chat**  
to the moderator



**\*9**  
Raise Hand

