



Massachusetts Bay Transportation Authority

Safety Briefing

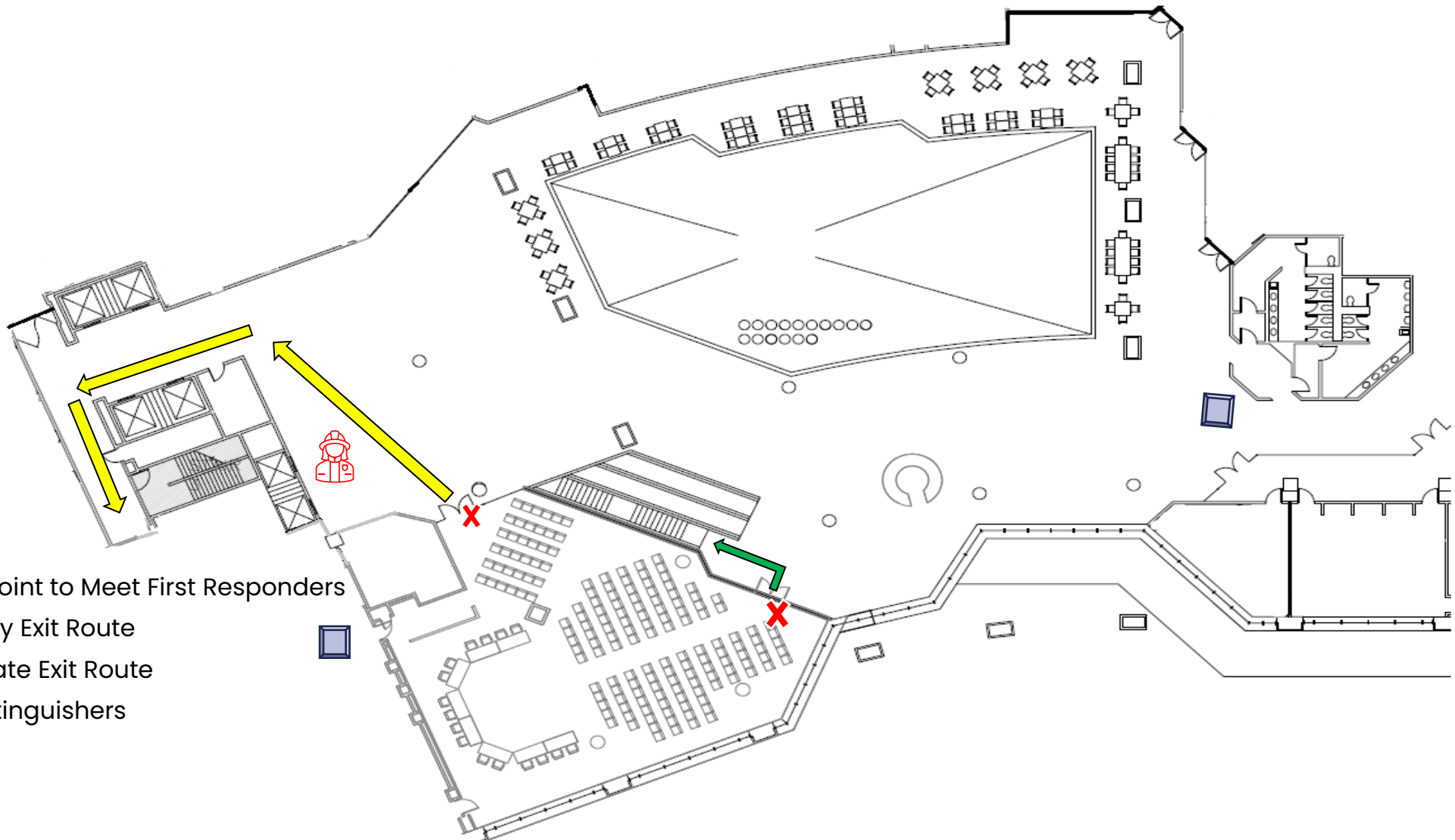
Darrin McAuliffe

Deputy Chief of Staff






MBTA Board of Directors Meeting

January 23, 2025

Safety Contact



Legend

-  Rally Point to Meet First Responders
-  Primary Exit Route
-  Alternate Exit Route
-  Fire Extinguishers
-  AED



Winter Driving: Use Caution

According to the National Highway Traffic Safety Administration (NHTSA):

In 2022 there were an estimated 153,620 police reported traffic crashes that occurred when there was snow/sleet conditions at the time of the crash.

- there were 498 fatal traffic crashes, and an estimated 32,213 injury crashes that occurred when there was snow or sleet conditions at the time of the crash.

Recommendations:

- Increase the distance between your car and the car you are following
- Don't crowd snowplows, or travel along side trucks



<https://www.nhtsa.gov/winter-driving-tips>

Winter Driving Preparation: Before You Go

Stock Your Vehicle

- snow shovel, broom and ice scraper
- sand or kitty litter
- jumper cables, flashlight, flares and/or emergency markers
- blankets
- first aid kit
- cellphone charger
- water

Keep Your Vehicle Fully Fueled or Charged

Plan Your Route

Pause/Rest on Longer Trips

Always Check Speed



<https://www.nhtsa.gov/winter-driving-tips>

Thank you!

