

Stations and Facilities

Dennis Varley

Chief of Stations, Facilities and Structures



Growing our internal depth

- Institutional knowledge, Accountability, Relationships, Inspection Protocols, In-house engineering capabilities aligned with in-house trades for more expedient and efficient SOGR & upgrade work.

Passenger and Public Safety

Proactive vs. Reactive Organization

- Preventative Maintenance Enhancements
- Establish a SOGR for Stations and Facilities.
- Operations Guide Development
- Asset Inventories
- Internal Partnering Opportunities



Stations Department Leadership Overview



Michael Foglio

Deputy Chief of Stations

- Responsible for Branch Line Managers, Station Support Managers and Coordinators
- 20 Years Transit Experience Recently Director Grand Central Terminal New York City MTA



Alex Machaiek

Deputy Chief of Facilities & Structures

- Responsible for skill-building trades.
- 25+ Years Managing and Operating a diverse portfolio of Facilities in Higher Education, Maritime, and Offshore Oil and Gas.



Chris Giunta, PE

Senior Director of Engineering

- Responsible for developing a robust inspection process of our structures and in-house engineering capabilities
- 25+ years developing, managing, and delivering strategic projects for the Federal Government. US Army Veteran & Licensed Professional Engineer

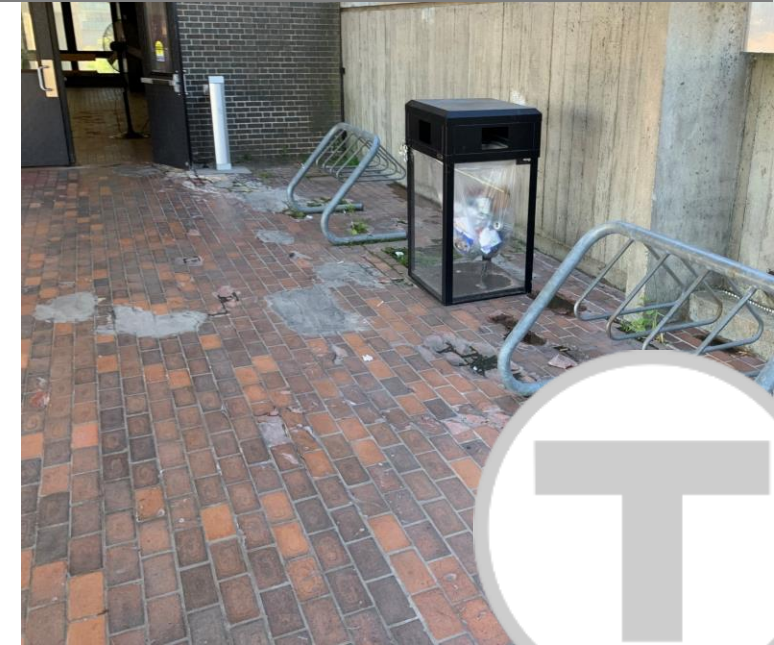


What is a good station? Focus on the customer.

- Gateways to our transit system
- Gateways to the communities we serve
- Stations should be clean, bright and inviting – instill pride in the riding public
 - State of good repair
 - Safe
 - Accessible
 - Maintainable



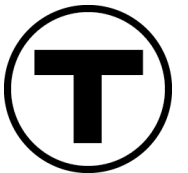
Community College | Entrance Restored





Developing Internal Depth at the MBTA *Stations, Facilities and Structures*

- Building dynamic work teams to complete tasks effectively – Composite Gangs
- Implementing enhanced work management plan, documentation, and metrics.
- Building dynamic work teams to complete tasks effectively.



Branch Line Managers



Amanda Bright

Red Line

Background: 19-year MBTA Employee



Mick Brunache

Orange Line

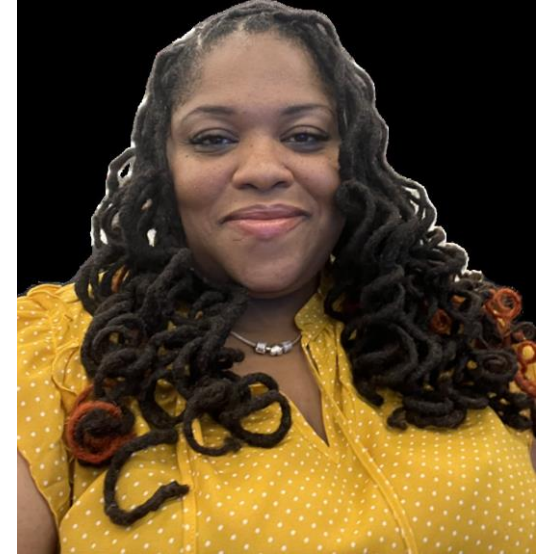
Background: Keolis Conductor



Alexander Soto

Blue Line

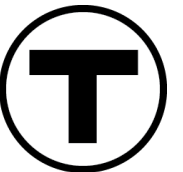
Background: Facility Leadership in Academic and Healthcare



Jaleesa Turner

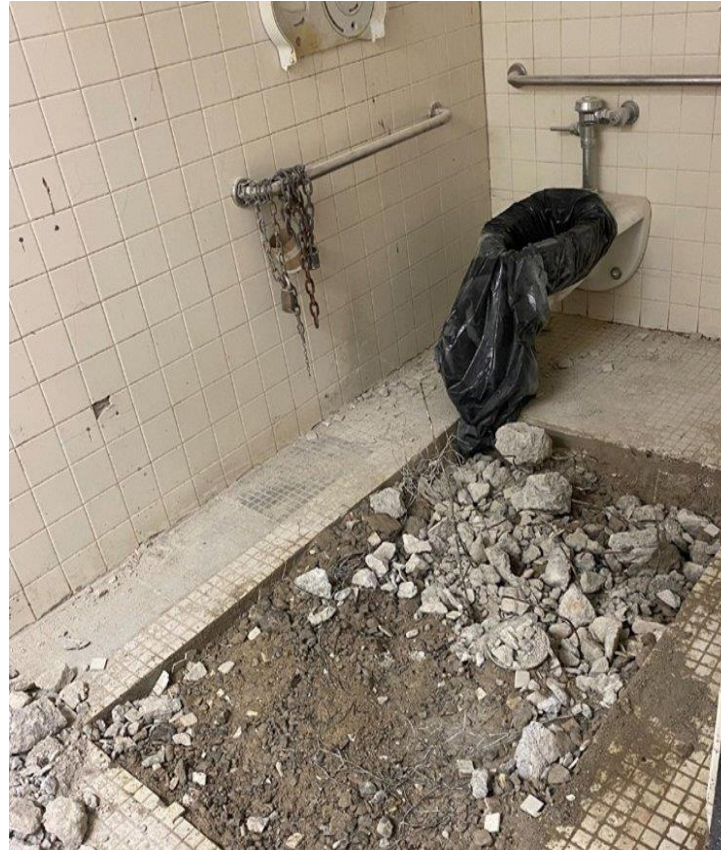
Green Line

Background: Keolis Train Master

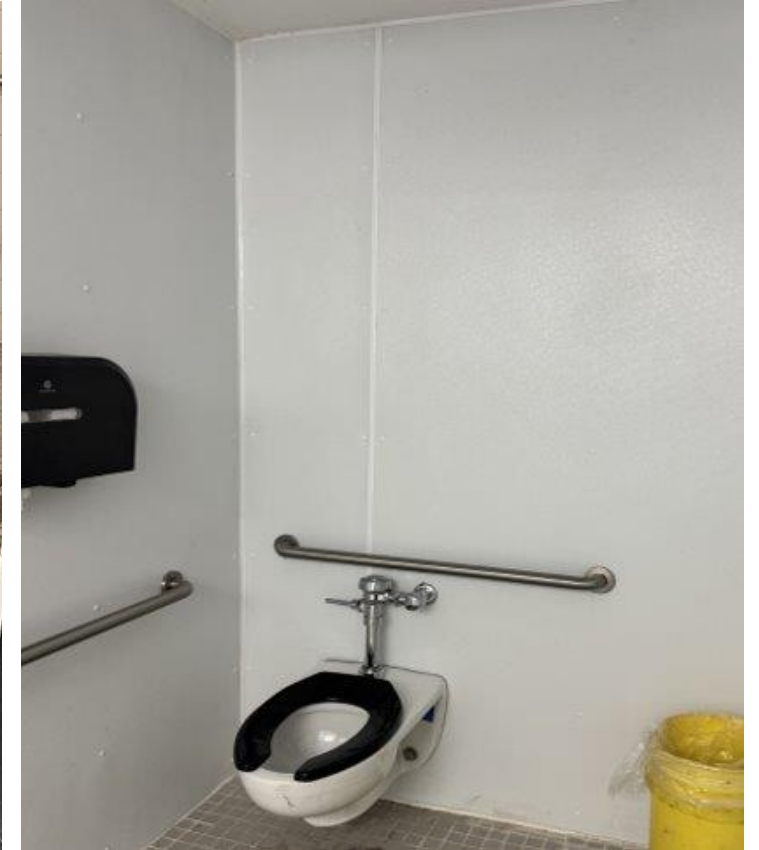


- Working to build a Preventive Maintenance and Inspection program.
- Identifying and addressing deferred maintenance tasks.

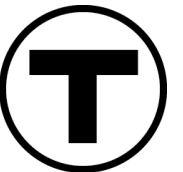
Braintree Public Restroom



Before

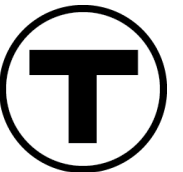
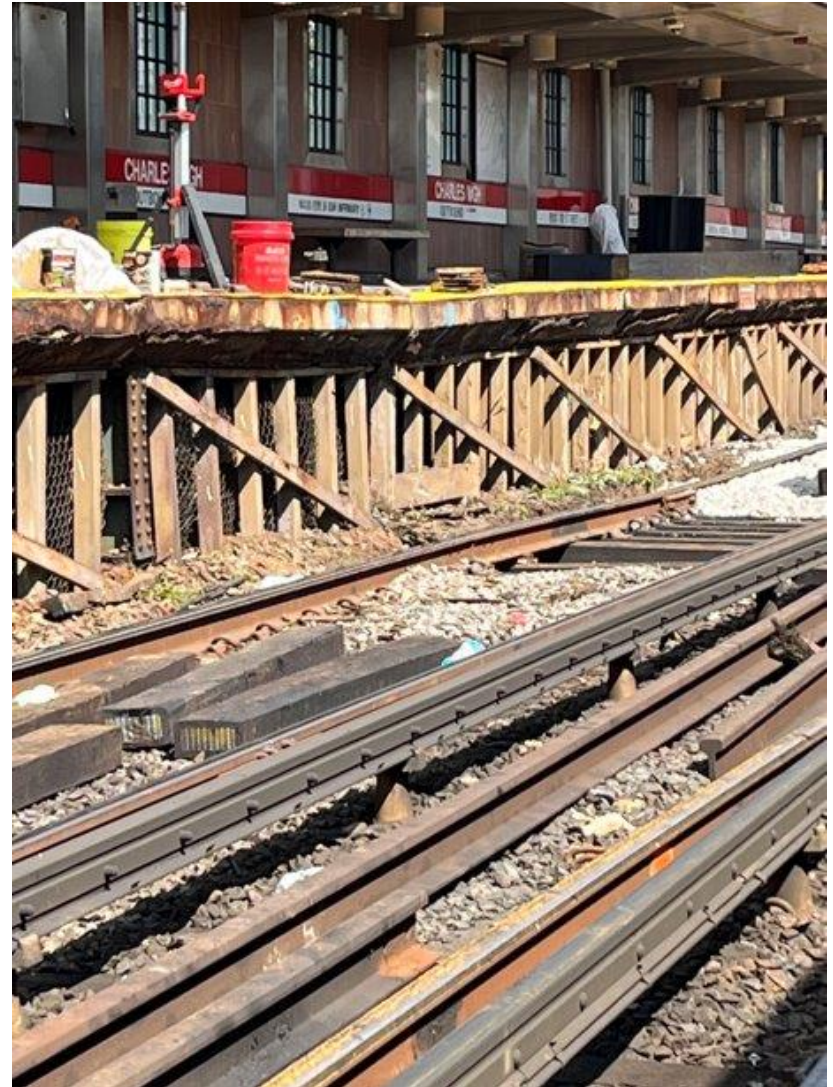


After

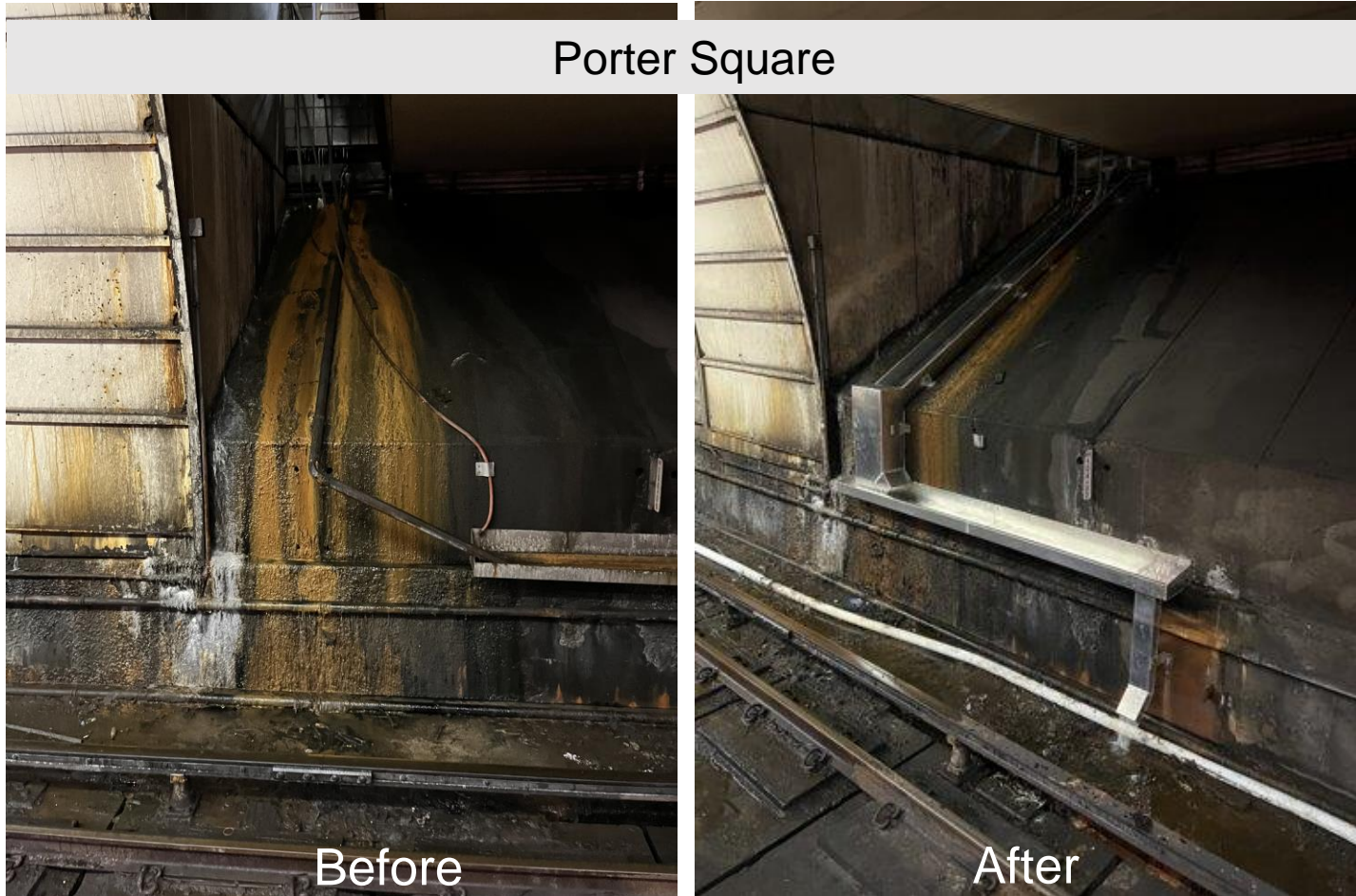


Structures and Facilities

- Addressing known Stations & Facilities issues in public space and taking advantage of increased access on the Right-Of-Way during Diversions.
- Working to develop an enhanced work management plan, with accurate documentation and metrics.
- Working to build preventive maintenance and Inspection program
- Building dynamic work teams to complete tasks effectively.



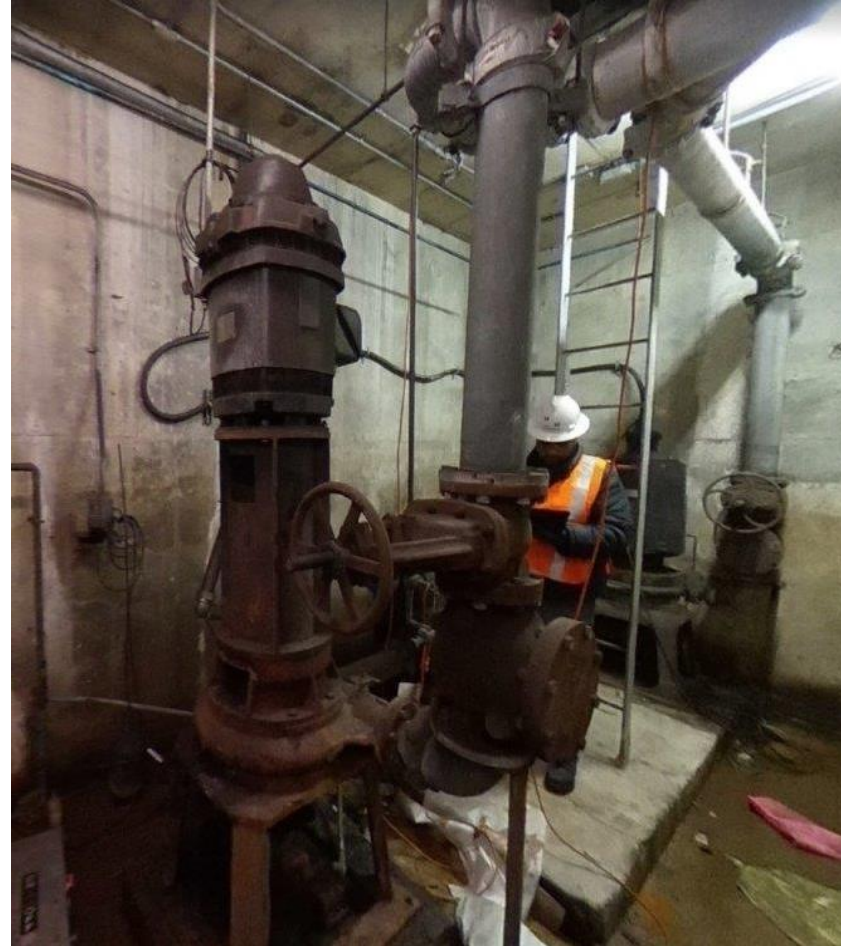
Stations Engineering – Water Intrusion



- Water Intrusion in the tunnels is a challenge in subway infrastructure
- This is ground water intrusion that could not be stopped. Degraded the track infrastructure and signal system at Porter Square.
- Built a trough to re-direct the water to the drains that lead to the pump station.



- Critical for the protection and restoration of service in the instance of flooding
- Implementing a proactive inspection and maintenance program



Before



After



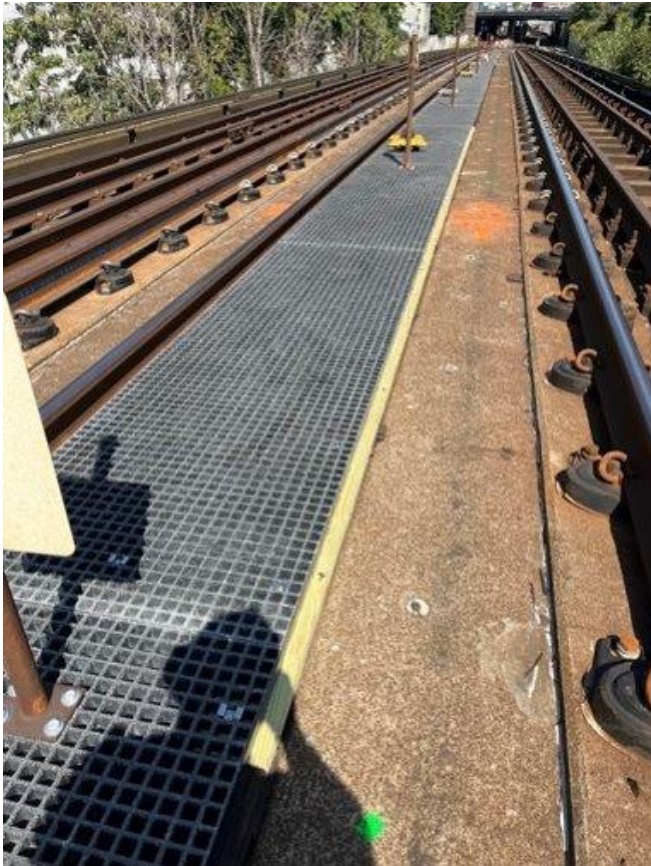
Stations Engineering – DeVaughn Flyover



Before



Mock-up



After



Thank you!

Questions?

