



**Massachusetts Bay
Transportation Authority**

Safety Updates

Nancy Prominski


Deputy Chief Safety Officer

Safety, Health and Environment Subcommittee

March 14, 2024



Discussion Topics

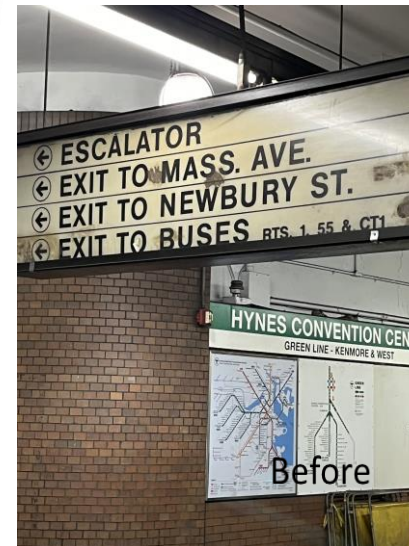
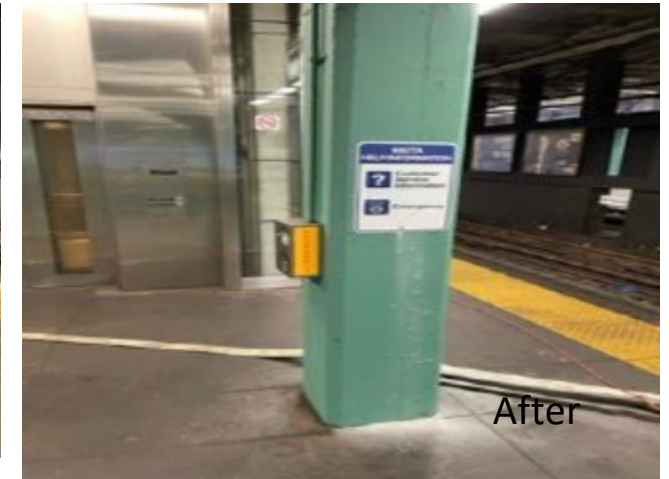
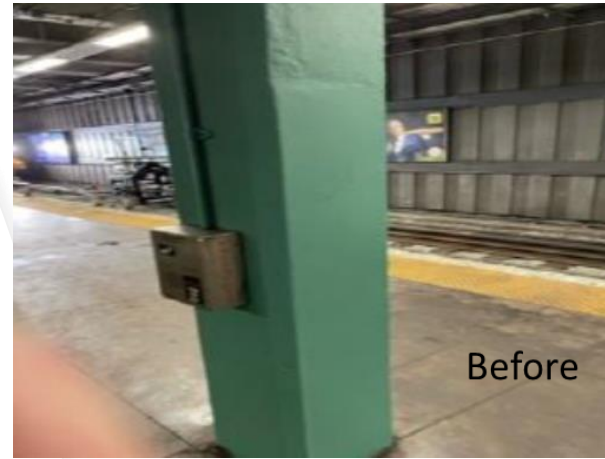
- Green Line Surge
 - Recent Incidents
- 

Green Line Surge

February 20 – March 8

Copley/Brookline Hills/Babcock/Cleveland Circle

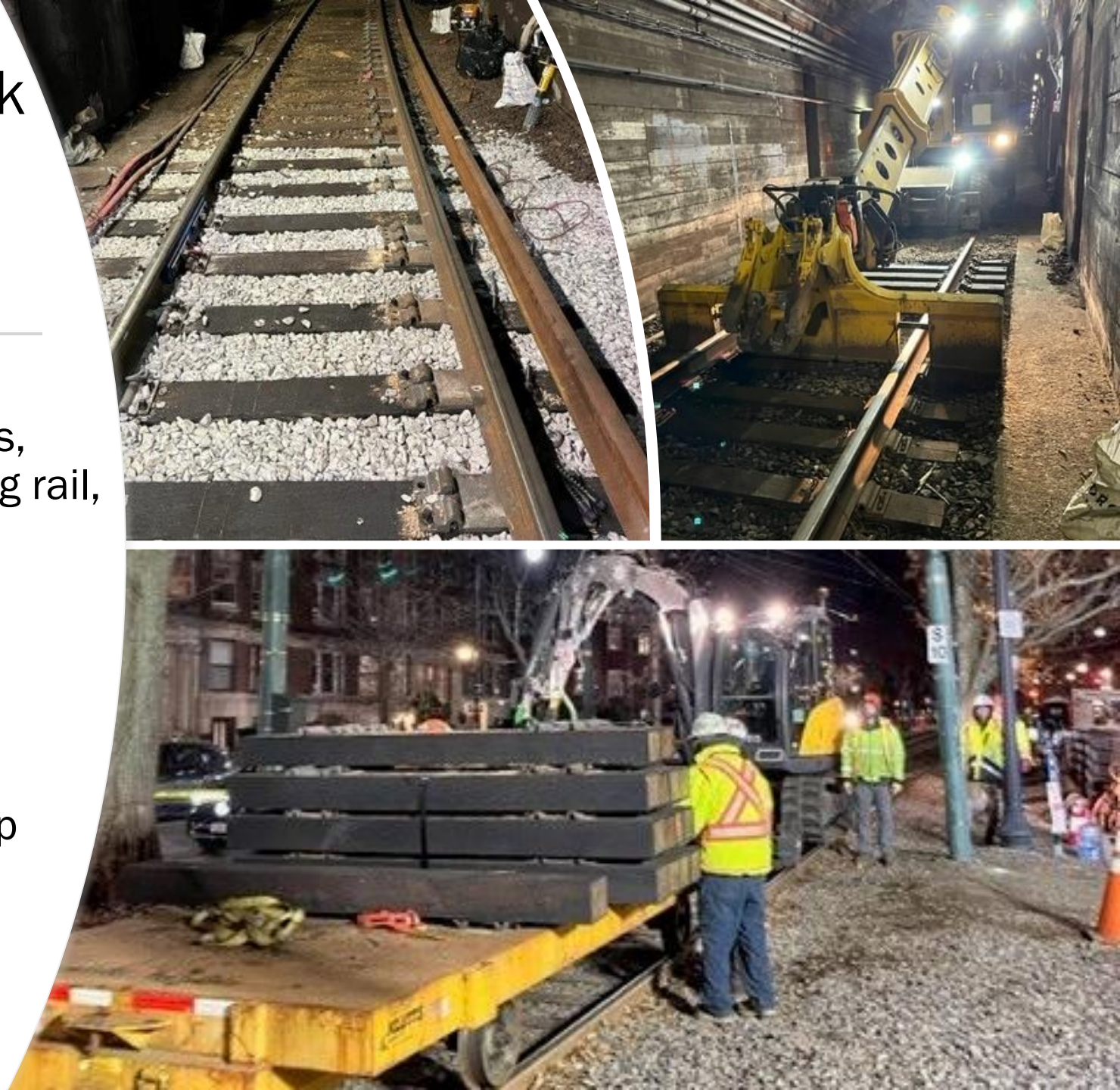
- 99% restriction-free track on light rail
- 11 speed restrictions removed
- Construction work occurred 24/7
- Focus: Safety, reliability, and passenger comfort improvements
- Infrastructure work included repairs and upgrades to track, signals, and power
- Station work included lighting, painting, wayfinding, and signage upgrades, cleaning, and inspections



Green Line Surge Critical Work

Notable track work included:

- **Infrastructure Upgrades:**
 - Installed 13K ft. of rail, 1,300 ties, 18,00 plates, 4,000 ft. restraining rail, 2,800 ft OCS wire
 - Tamped 21K+ linear ft. of track
 - Repaired & installed switches
 - Repaired tunnel leaks
- **Improved Passenger Experience:**
 - Safer, smoother, more reliable trip



Recent Incidents



Questions?
