



# Track Improvement Program Update December 2023

Surge Management Team



# Track Improvement Program 2023-2024 | Timeline

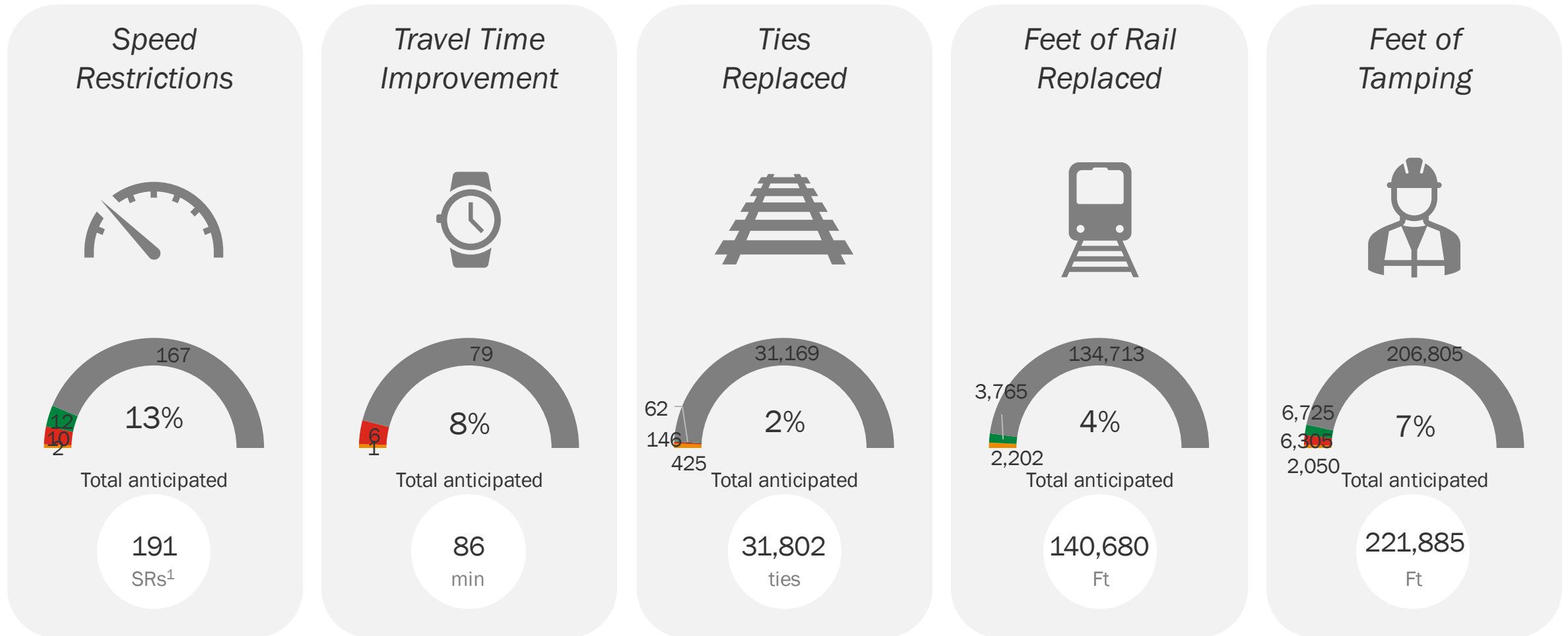
Alternative Service Limits	Speed Restrictions	Modeled Time Savings (mins)	Diversion Duration (days)	2023		2024											
				NOV	DEC	JAN	FEB	MAR	APR	MAY	JUN	JUL	AUG	SEP	OCT	NOV	DEC
A	Harvard to Central	✓ 1	1.7	Wknd													
B	JFK/UMass to Park St	✓ 6	2.7	EA/Wknd													
A	Oak Grove to North Station	✓ 2	1.9	EA/Wknd													
A	North Station to Kenmore, Heath, Babcock	✓ 10	4.3	9													
B	Riverside to Kenmore	20	9.2	10													
1	North Station to Lechmere	2	1.8	14													
2	North Station to Kenmore, Heath, Babcock	15	8.7	21													
3	Copley to St. Mary's, Babcock, Brookline Hills	9	4.2	18													
4	Boston College to Kenmore	7	1.7	10													
5	Cleveland Circle to St. Mary's	1	0.1	6													
1	Oak Grove to North Station	13	1.7	6													
2	Wellington to North Station	5	4.3	9													
3	Sullivan to Back Bay	6	2.3	10													
4	Haymarket to Jackson Sq	2	1.3	4													
5	Back Bay to Forest Hills	15	4.8	11													
1	Alewife to Harvard	9	6.5	9													
2	Alewife to Kendall	9	4.0	16													
3	Harvard to Park	3	0.8	6													
4	Kendall/MIT to Broadway	8	3.7	6													
5	Park to JFK/UMass	8	2.6	8													
6	Broadway to North Quincy	4	2.7	6													
7	JFK/UMass to Braintree	22	9.1	16													
1	Airport to Wonderland	12	5.3	12													
2	Bowdoin to Airport	2	0.7	Night Orders													

191 restrictions Lifted  
86.1 minutes saved  
207 days of work

Today  
Dec 13

Data as of December 11, 2023

# Progress Metrics



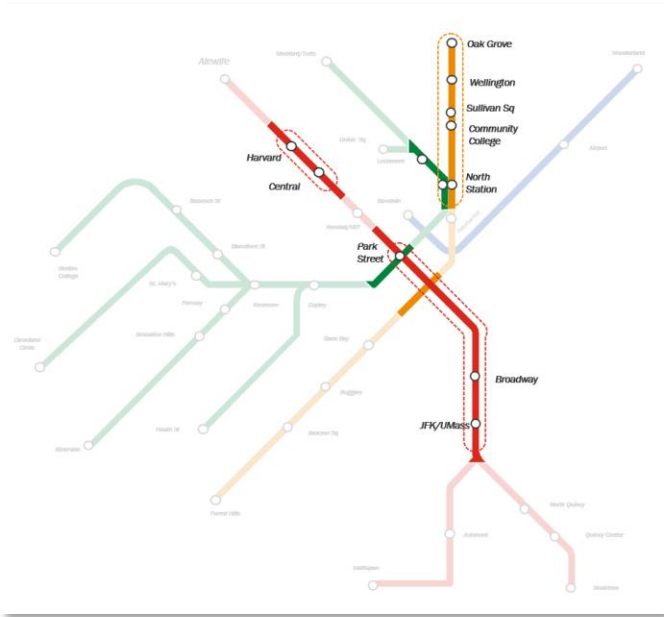
1. 191 Speed restrictions that were in place as of November 6

■ Orange Line 
 ■ Red Line 
 ■ Blue Line 
 ■ Green Line 
 ■ Remaining

# Track Improvement Program | Completed Work (Weekend and Early Access)

## Red Line & Orange Line Weekend & Early Access

- Harvard to Central: Nov 4 – 5
- Oak Grove to North Station: Nov 7 – 12
- JFK/UMass to Park St: Nov 14 – 19



### Metrics

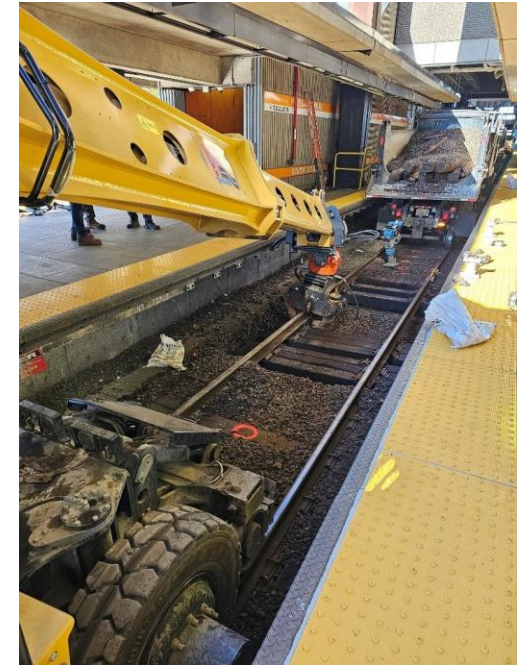
#### Red Line

- ✓ 10 Speed Restrictions cleared
- ✓ ~6 minutes travel time improved
- ✓ 146 ties replaced
- ✓ 2,202 feet rail replaced
- ✓ 6,305 feet of tamping

#### Orange Line

- ✓ 2 Speed Restrictions cleared
- ✓ ~1 minute travel time improved, NB
- ✓ 425 ties replaced
- ✓ 2,050 feet of tamping

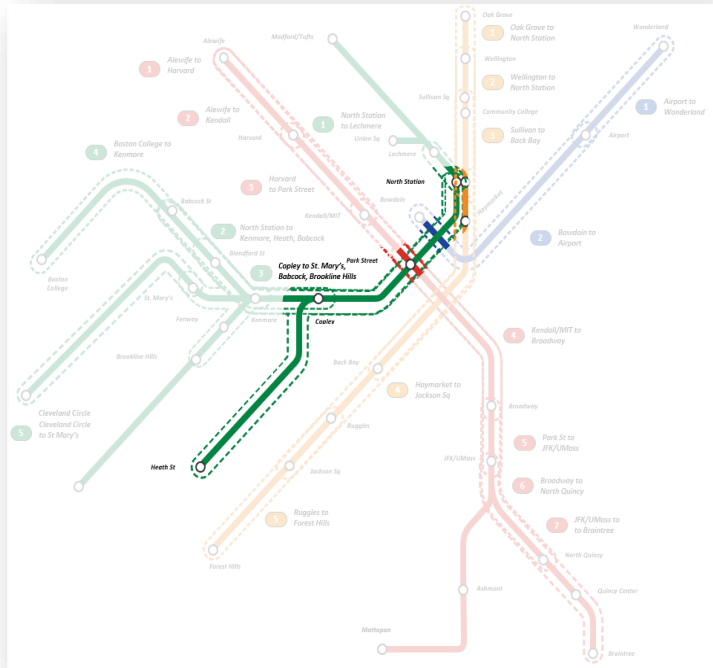
OL Oak Grove to North Station



RL Park to JFK/UMass

# Track Improvement Program | Completed Work (Surge)

## Green Line Surge: North Station to Kenmore, Heath, Babcock, Nov. 27 – Dec.5

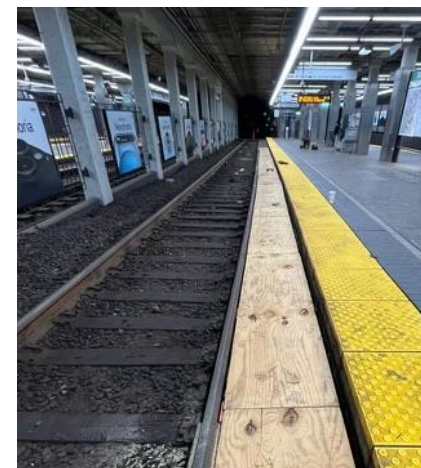


### Metrics

- ✓ 12 Speed Restrictions cleared
- ✓ 530 feet full depth track reconstruction
- ✓ 3765 feet rail replaced
- ✓ 6725 feet rail tamping
- ✓ 62 Ties replaced
- ✓ 785 Plates swapped & regauged

### Piggyback Work

- Critical tunnel structural repairs
- Hynes floor & stairs repaired
- Replaced some catenary sections
- Installed add'l E-ink signs
- Conducted tunnel inspections
- Inspected station overhead locations and stairs.
- Completed signal system cable, switches & junction boxes work
- Lechmere Viaduct Early Access



Station Upgrades



# Track Improvement Program | Current/Upcoming Work

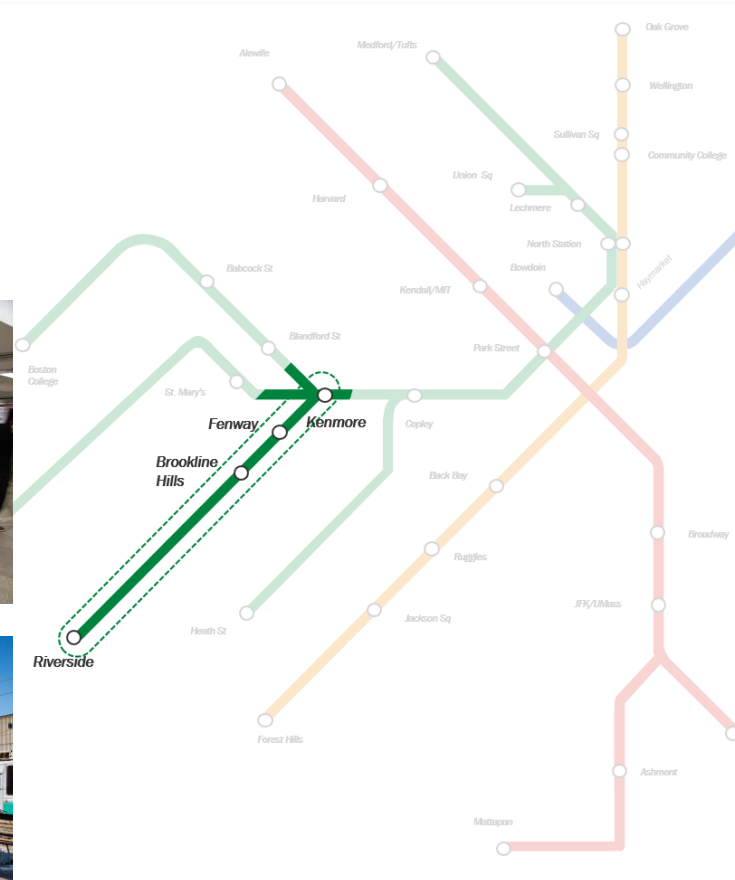
## Green Line: Riverside to Kenmore, Dec. 11-20

Replace rail, ties and ballast to address 20 speed restrictions.

Maintenance track work in the Riverside Yard, welding near Elliot Station and dragging stringers between Fenway and Longwood.

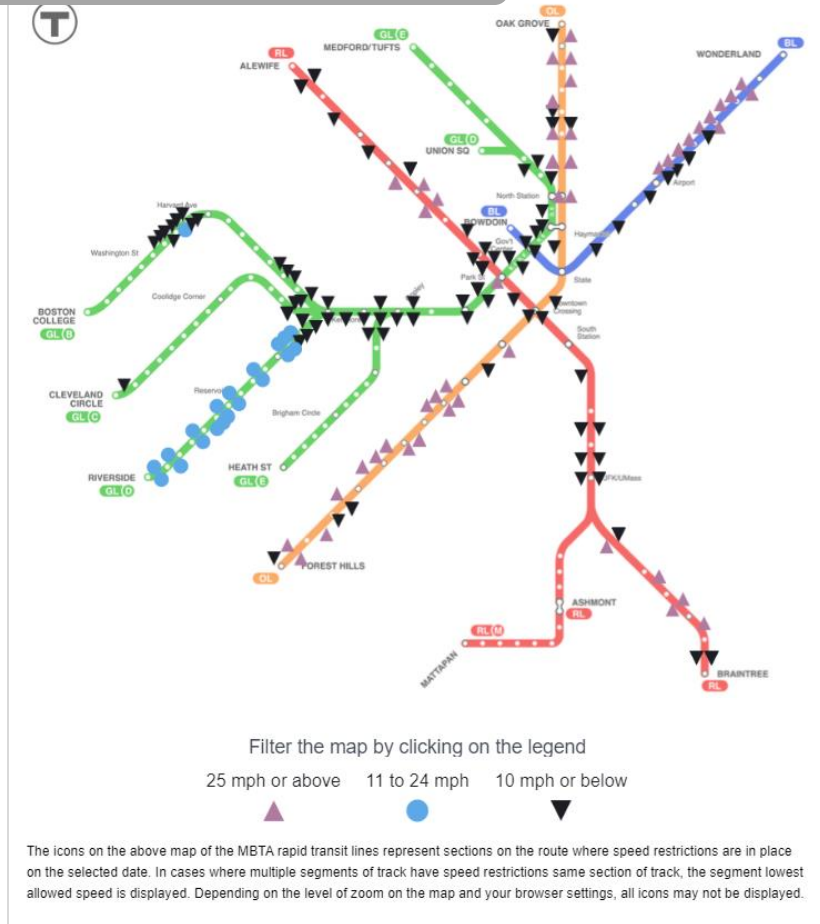
### Piggyback

- Riverside Operators' Roof Replacement
- Switch Certification and Heater Repairs (Signals)
- Fenway Portal OCS Replacement (Power)
- Station Maintenance, Repairs, Lighting Replacement and Cleaning
- Coordinate with MassDOT while they repair the underside of the Rte 9 bridge



# More updated information on latest speed restrictions available at MBTA.com

[mbta.com/speedrestrictions](https://mbta.com/speedrestrictions)



[mbta.com/trackprogram](https://mbta.com/trackprogram)

RL OL BL GL ML

## Track Improvement Program 2023-2024

Phil Eng, MBTA GM & CEO  
Sam Zhou, MBTA Chief Engineer

1

Draft for Discussion & Policy Purposes Only

# Questions

