



Massachusetts Bay Transportation Authority

GM Report

Phillip Eng, MBTA General Manager and CEO

October 24, 2023





GLX Update



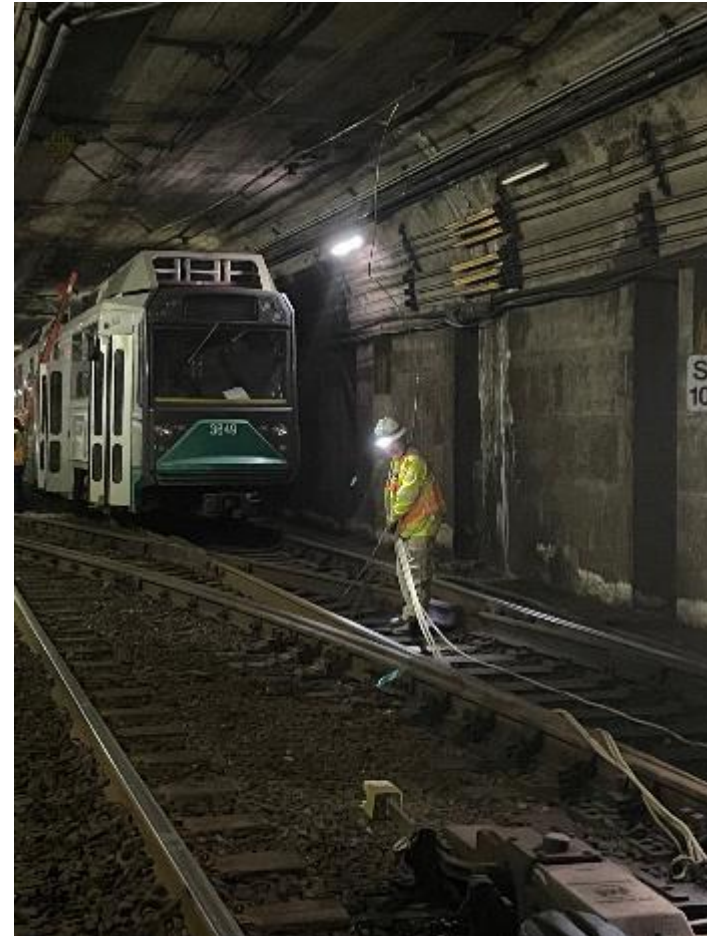
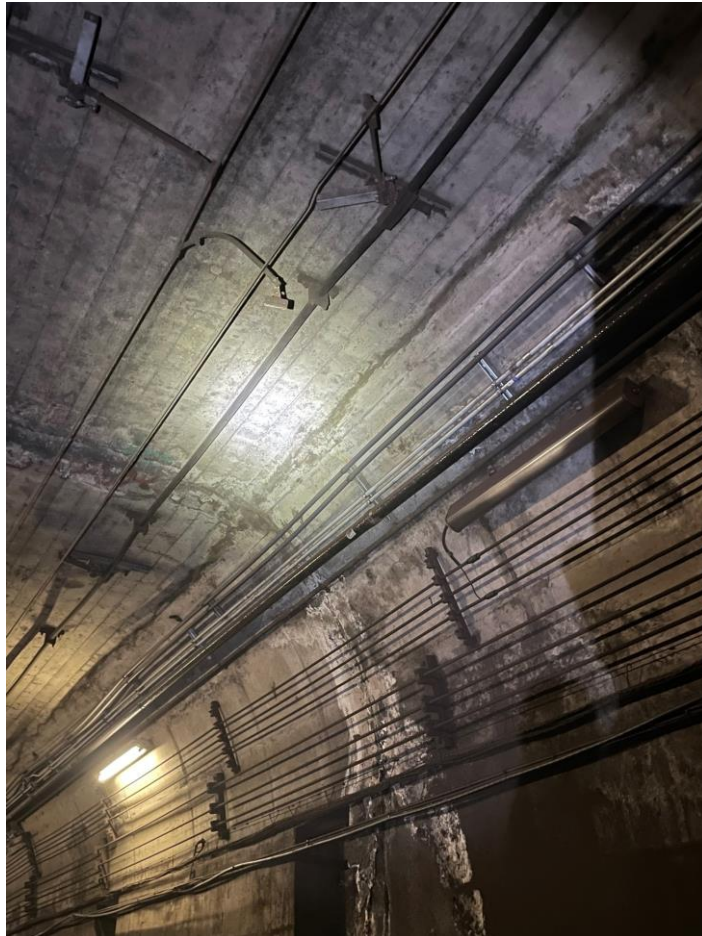
Green Line Catenary

Red Bridge



Green Line Catenary

Copley



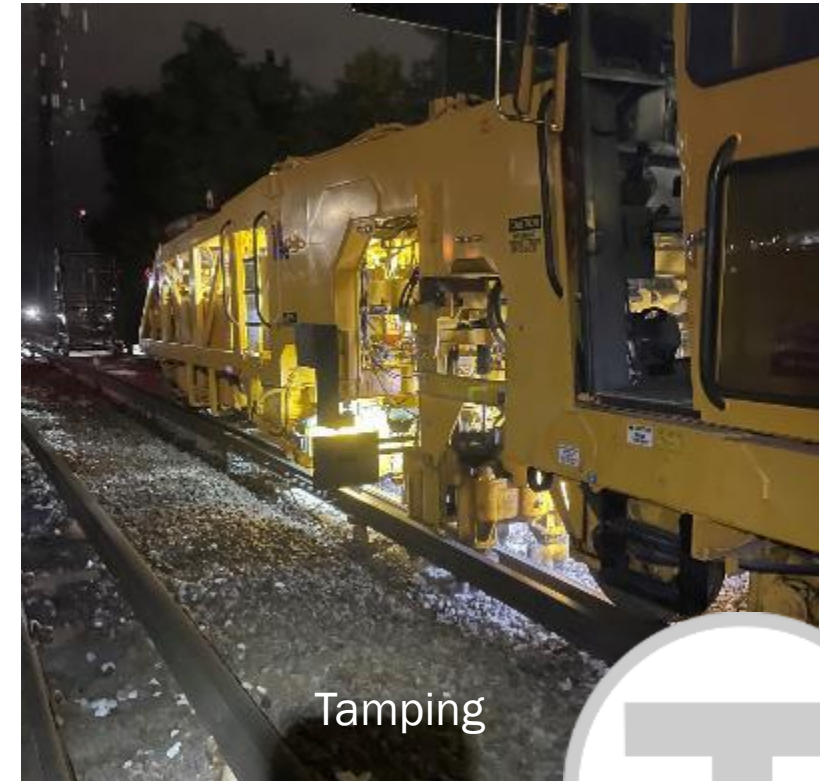
Red Line Diversion

Mattapan Track Work



Red Line Diversion

Ashmont Track Work



Red Line Ashmont Branch



On the Red Line Ashmont Branch, crews are upgrading tracks to renew infrastructure & remove significant speed restrictions during the 16-day diversion. From replacing rail ties & stone ballast to realigning tracks, these efforts aim to save riders travel time.

[#BuildingABetterT](#)

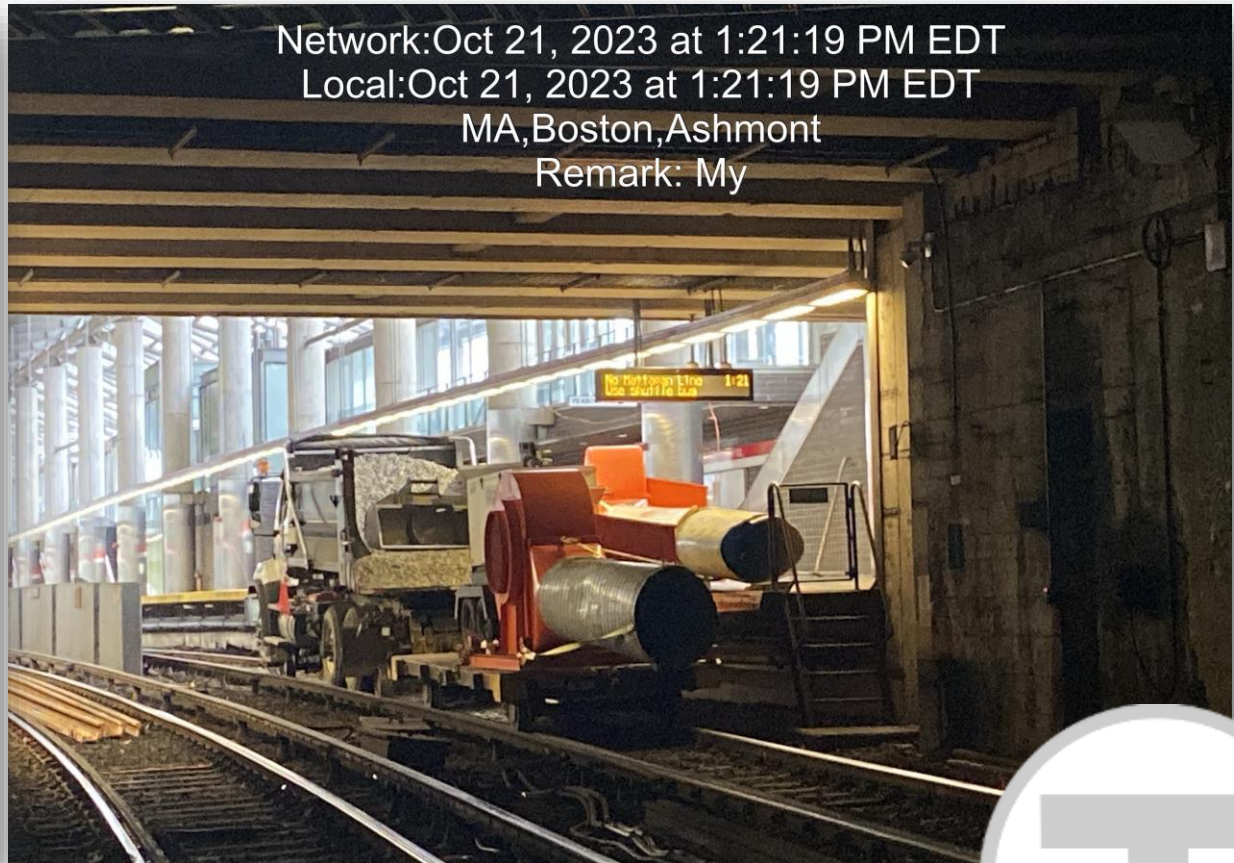


1:45 PM · Oct 23, 2023 · **7,724** Views



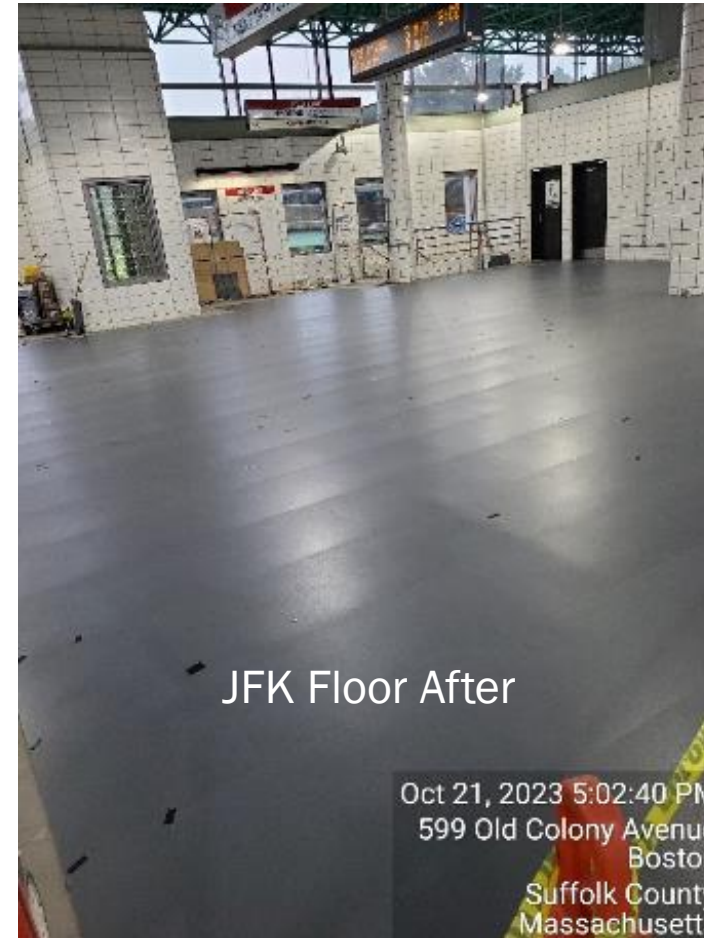
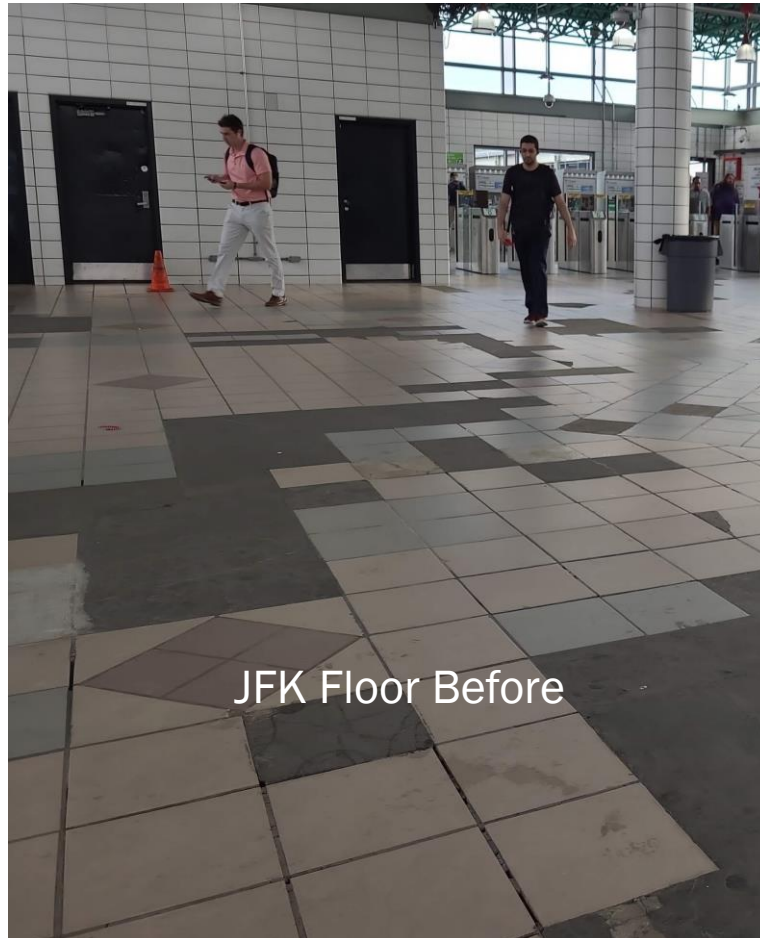
Red Line Diversion

Ashmont Tunnel Ventilation



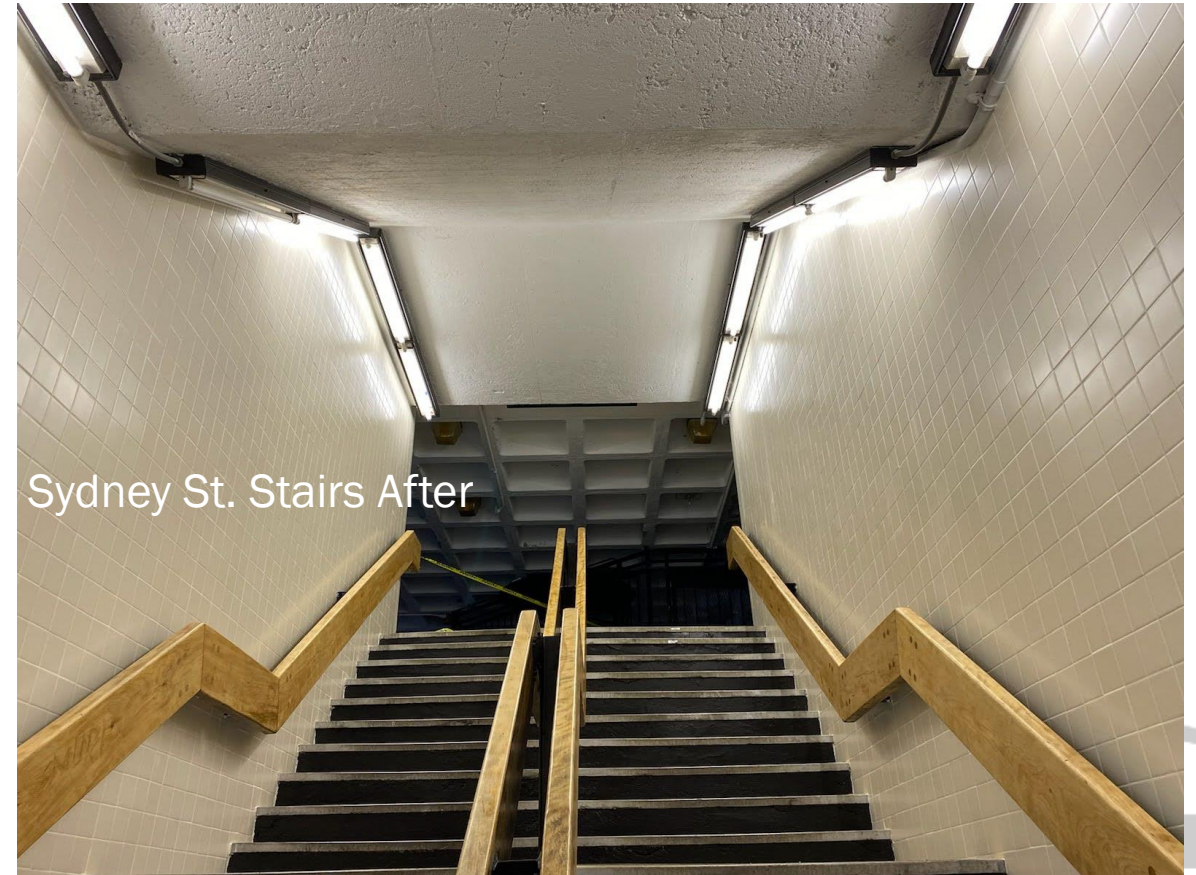
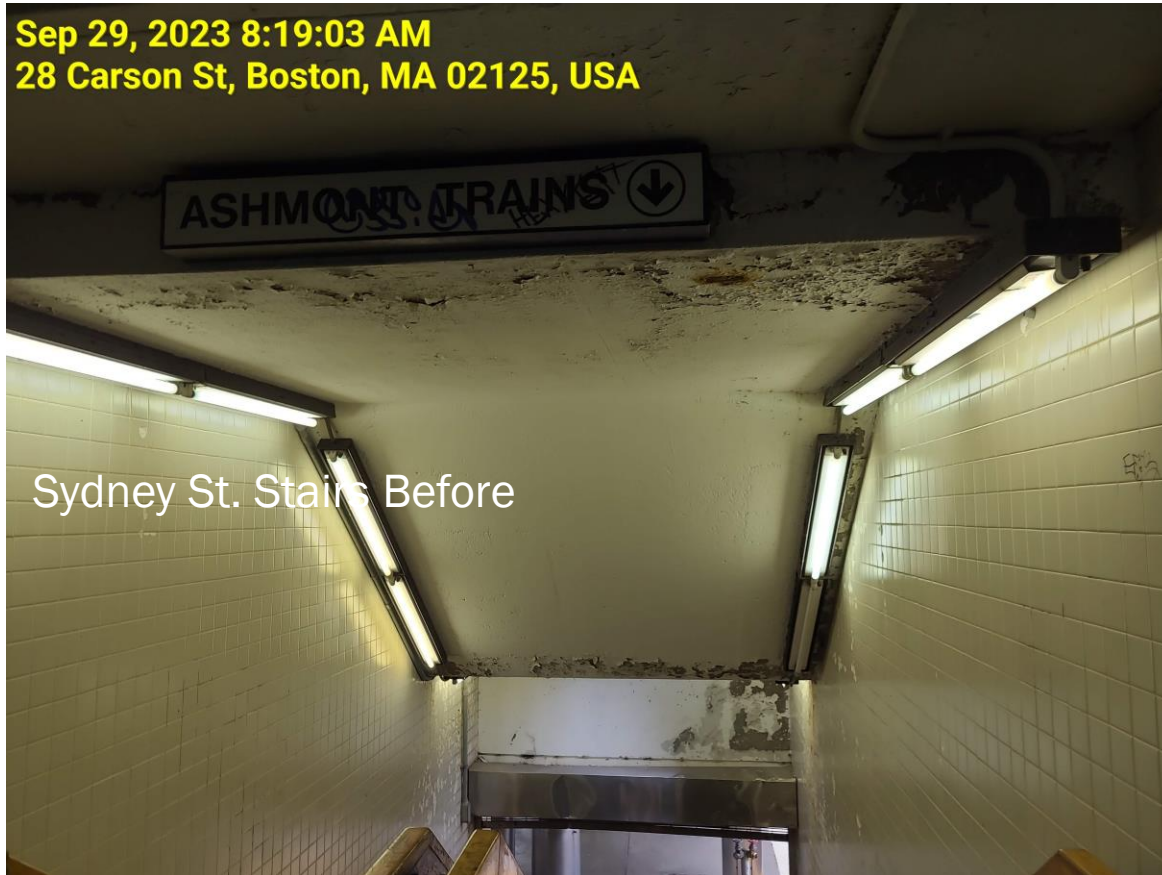
Red Line Diversion

Station Piggyback Work



Red Line Diversion

Station Piggyback Work



Lynn's Temporary CR Platform

Accelerating access for Lynn
and local communities



Suffolk Downs Station

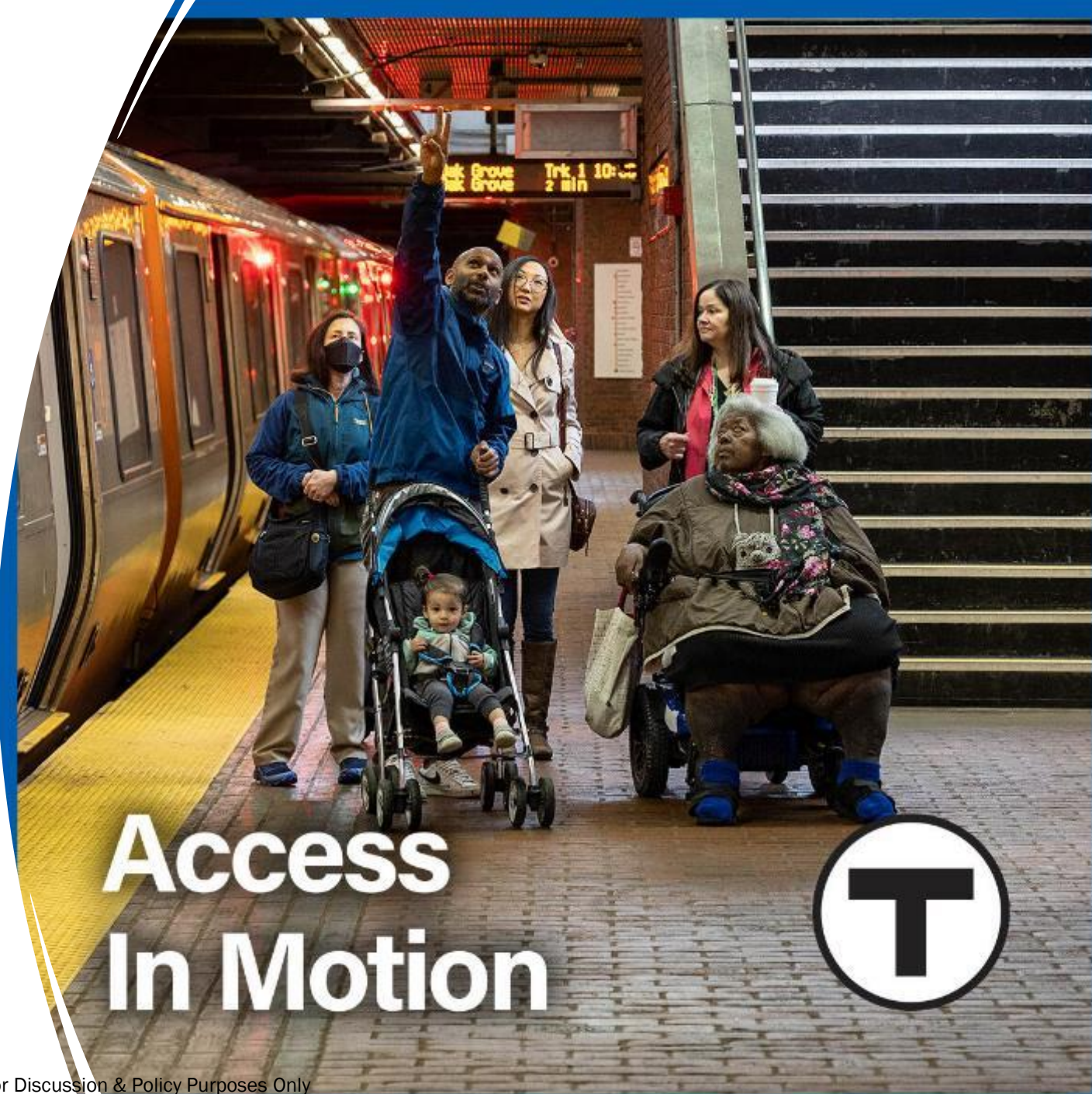
Platform Accessibility Work



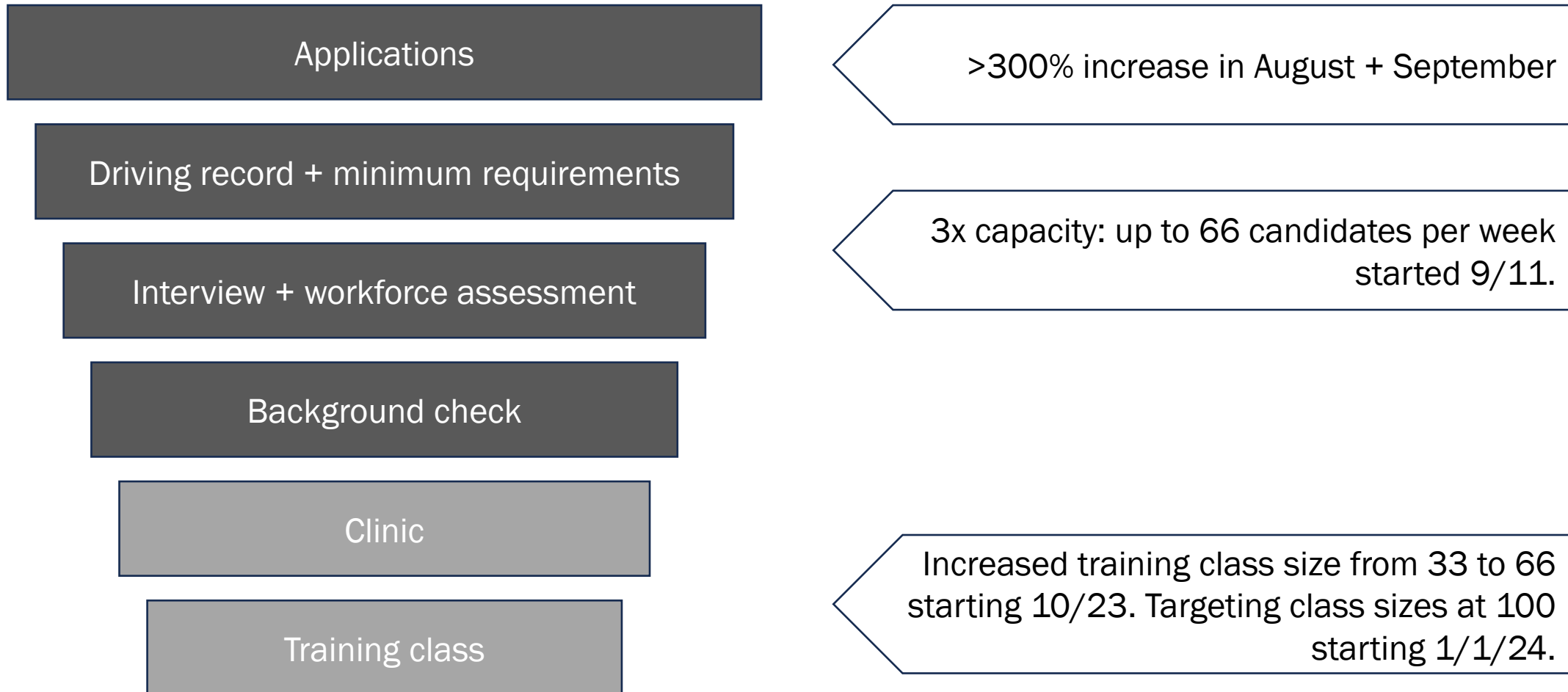
Raising Awareness

- ✓ Accessibility benefits all riders
- ✓ Key policies & services
- ✓ Progress & improvements

Go to [MBTA.com/accessibility](https://www.mbta.com/accessibility)



Bus operator hiring check-in



Hiring On-the-Spot Oct. 14



Hiring for: Track Laborer MBTA Maintenance of Way Department

Job Description:

The Track Laborer will perform heavy manual labor activities in all types of weather to remove, install and maintain track, including but not limited to lifting rail sections; and handling rail during curving, cutting and drilling operations.

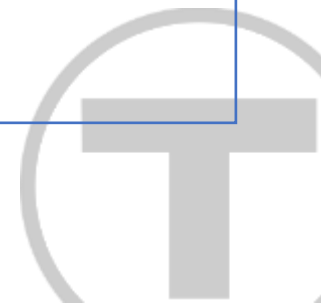
238 resumes screened as candidates for the Track Laborer role, a critical feeder pool position for System Repairers, Trackpersons and Forepersons in the Maintenance of Way (MOW) Department.

118 conditional offers to candidates.

54 MBTA employees staffed the event.

We expect to complete pre-employment throughout the next 2-4 weeks with clinic appointments scheduled and background checks initiated.

Doubling class sizes for Track Laborers starting November.
Increased class size from 8 to 20.



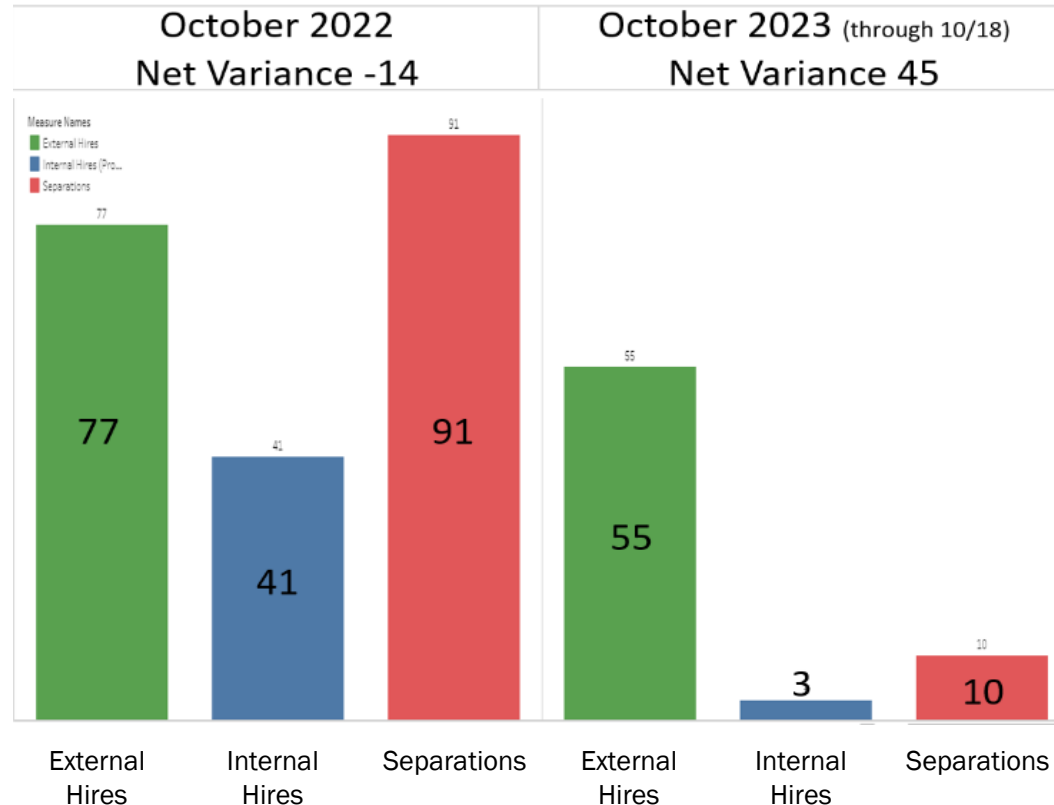
Hiring On-the-Spot Oct. 14

Candidates completed:

- ✓ Application & Screening
- ✓ Driving record review
- ✓ Interview
- ✓ Offer Letter
- ✓ CORI
- ✓ Background check signup
- ✓ Physical Appointment Scheduling
- ✓ Drug & Alcohol Test



Workforce Retention



- ✓ **80%** of retirement-eligible L589 members signed up for the **retention bonus and committed through 2024.**
- ✓ Improves **workforce planning** and more detailed knowledge around retirements in specific job classifications and **retains institutional knowledge.**



Employee-Driven Process Improvements Yield Direct Operational Wins and Enhance Rider Experience



CRRC Update

Deliveries & Plan in Process





MBTA Riders Select New Green Line Paint Design





Bus Modernization | Improved rider experience & reduced environmental impact



City of Boston's Blue Hill Ave Community Engagement Report Released



Months of continuous engagement

Recorded comments



Community members reached through passive and direct outreach



Thank you.

