

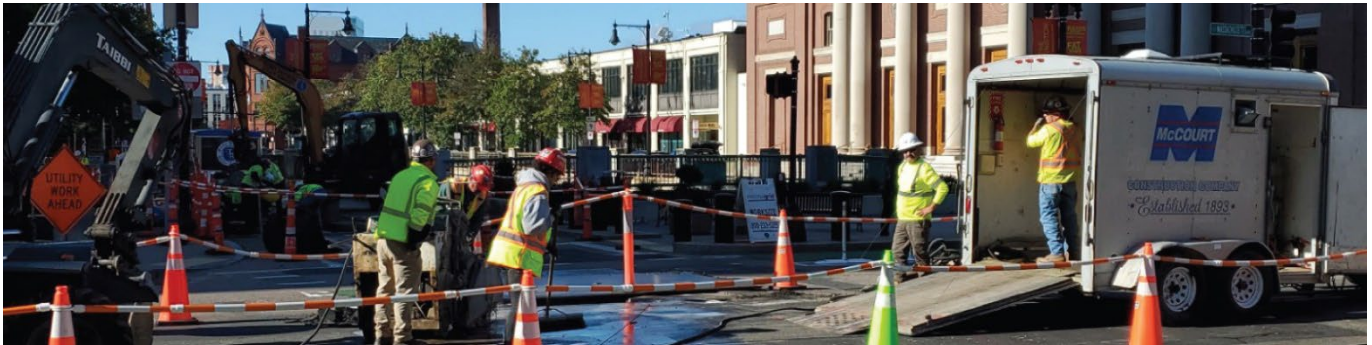
Green Line Transformation

A Capital Transformation Program



Green Line Transformation Program Update, Friday, November 3

Under the [Green Line Transformation](#) (GLT) program, progress continues on the [Symphony Station Accessibility Improvements](#). Continue reading for more information. We encourage riders to review the MBTA's [press release on November service changes](#).



Work on Eversource duct bank near Symphony Hall

Did you know...

... that the Daylight Saving Time change is right around the corner? Be sure that your clocks "fall back" an hour on Sunday, November 5 and enjoy the longer day!

GLT Improvements Continue Across the Green Line

- **Symphony Station Accessibility Improvements**

At [Symphony Station](#), utility relocation work is ongoing in advance of station improvements. Crews continue to backfill the Eversource duct bank and demolish concrete encasing the existing 10" steam line near Symphony Hall. More details can be found on the [project website](#).

To report a construction-related issue on the Symphony Station project, call the hotline at [857-202-0831](tel:857-202-0831). It will be answered during construction hours Monday-Friday (except holidays). All voicemails left outside of construction hours will be addressed on the following weekday shift.

Please note the schedule for these major infrastructure projects is dependent on weather and subject to change without notice.

For More Information

For more information on speed restrictions, visit the online [Speed Restriction Dashboard](#) that provides riders with up-to-date information on speed restrictions across the MBTA system.

Visit www.MBTA.com/GLT to see the numerous projects that GLT is carrying out to improve your experience riding the Green Line. To stay informed of service changes, sign up at www.MBTA.com/alerts.

If you have any questions, please email GLT@mbta.com.

To stay informed of Capital Transformation work on other lines, please use the links below:

- [Sign up for Red Line Transformation email updates](#)
- [Sign up for Orange Line Transformation email updates](#)

In service,

Desiree Patrice
Chief of Capital Transformation
GLT@mbta.com