

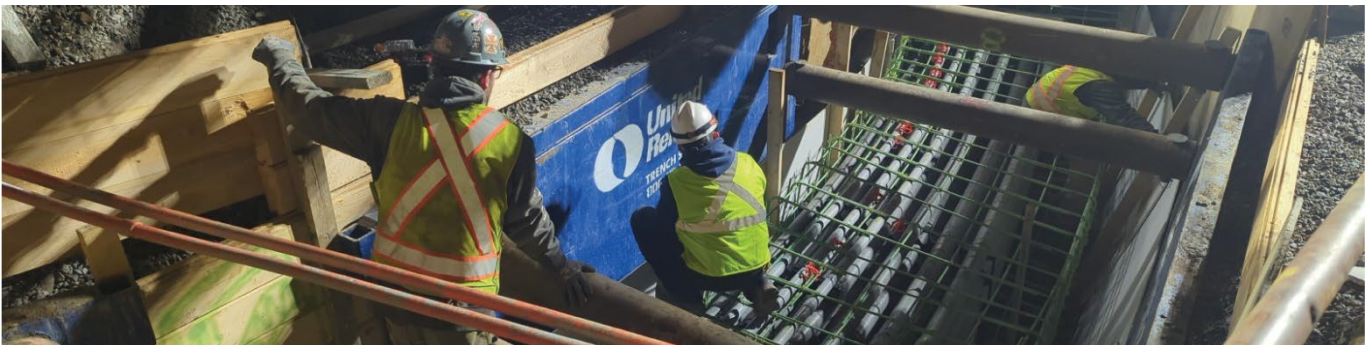
Red Line Transformation

A Capital Transformation Program



Red Line Transformation Program Update, Friday, October 27

Work continues on the [Red Line Transformation](#) (RLT) program. The [16-day full-access closure](#) of the Mattapan Line and Ashmont Branch of the Red Line, which began **Saturday, October 14**, is anticipated to be completed on **Sunday, October 29**. Thank you to all Red Line and Mattapan Line riders while we worked to expedite critical track work.



Duct bank construction in Codman Yard

Did you know...

... that for Haunted Happenings, there will be 10 more inbound trains from Salem to North Station, with at least 10 trains after 6 PM? Learn more in the [press release here](#).

RLT Improvements Continue Across the Red Line

- **Codman Yard Expansion & Improvements**
[Codman Yard](#) upgrades will increase reliability, modernize existing infrastructure, and expand service capacity. Due to the Red Line Ashmont Branch surge, crews are extending shifts and performing night work in the diversion area. Activities include digging, pouring, stripping, and backfilling newly installed duct bank at the ladder track and under-track crossings, and installing temporary conduit for traction power rail connections. Looking ahead, crews will continue to install duct banks and conduct borings for new utility bridge pilings. We continue to monitor pests in the area. You can view the [Pest Management Plan flyer](#) on our website.
- **Cabot Yard and Maintenance Facility**
Upgrades to the [Cabot Yard and Maintenance Facility](#) will allow for safer and more efficient vehicle maintenance. This week, the project team is working on submittals and

deliverables to allow new duct bank installation to proceed. Looking ahead, crews will be removing soil from the site to continue with duct bank trench excavation.

- **Red Line Signal Upgrades**

Upgrades will result in improved service reliability, a renewed lifespan for the entire signal system, and more efficient communications about system diagnostics. This week, crews are working during the Red Line Ashmont Branch surge on field modifications, pull wires, and signal testing at Ashmont's central instrument house and signal bungalow. Looking ahead, signal components and materials will be delivered, installed, and tested during future diversions on the Red Line.

Adjacent Projects

We also want you to be aware of adjacent projects. While the RLT team does not directly oversee these projects, we coordinate closely with the teams leading them. For the latest information on service changes, please visit the [Red Line Alerts page](#), [sign up for T-Alerts](#), and follow the [MBTA on Twitter](#).

- **Expedited Track Work on Red Line and Mattapan Line**

On Saturday, October 14, the MBTA commenced full-access closures of the Red Line Ashmont Branch between JFK/UMass and Ashmont Stations, and on the Mattapan Line between Ashmont and Mattapan Stations. This full-access closure will continue **through Sunday, October 29**. During this closure, the MBTA will provide free, accessible shuttle bus service for riders on the Ashmont Branch and Mattapan Line. Riders can also take Fairmount Commuter Rail service for free during this diversion. This work is necessary for the MBTA to perform critical track work. To report construction issues and noise complaints, please call the October closure hotline: [617-222-3331](tel:617-222-3331).

Please note the schedule for these major infrastructure projects is dependent on weather and subject to change without notice.

For More Information

For more information on speed restrictions, visit the online [Speed Restriction Dashboard](#) that provides riders with up-to-date information on speed restrictions across the MBTA system.

Visit www.mbta.com/RLT to see the numerous projects that RLT is carrying out to improve your experience riding the Red Line. To stay informed of service changes, sign up at www.mbta.com/alerts.

If you have any questions, please email RLT@mbta.com.

To stay informed of Capital Transformation work on other lines, please use the links below:

- [Sign up for Green Line Transformation email updates](#)
- [Sign up for Orange Line Transformation email updates](#)

In service,

Desiree Patrice
Chief of Capital Transformation
RLT@mbta.com