



# Sumner Tunnel Restoration Project

*Joint MassDOT & MBTA Board Briefing*

June 22, 2023

Project File No. 606476



# Sumner Tunnel Project



**Contractor:**

JF White, Framingham, MA

**Project Type:**

Design-Build

**Project Cost:**

\$136M + Ancillary Expenses

**Bid Date:**

6/26/2021

**Completion of Major Construction:**

9/1/2024

**Projected Contract Completion Date:**

December, 2024



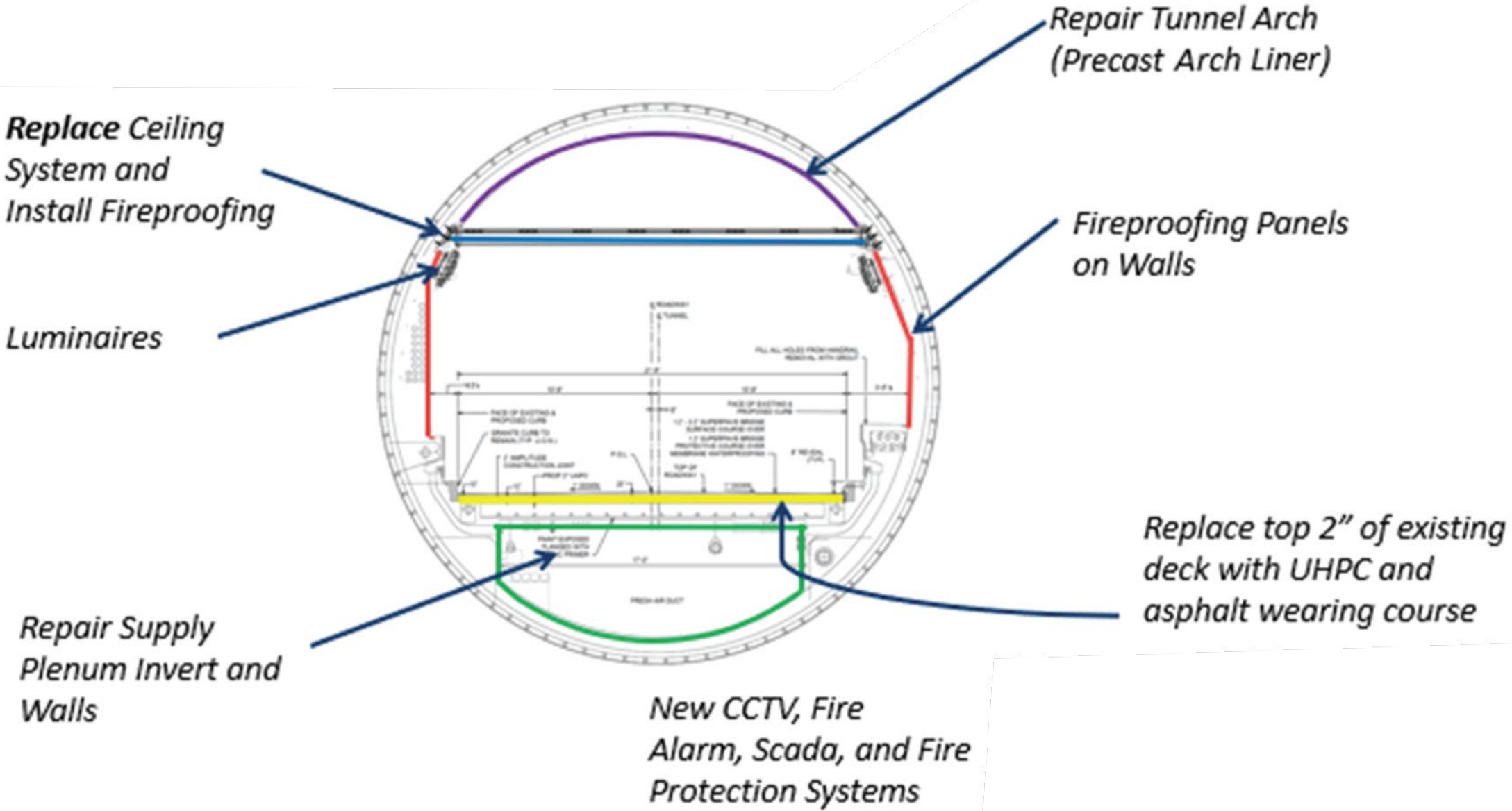
# Project Scope



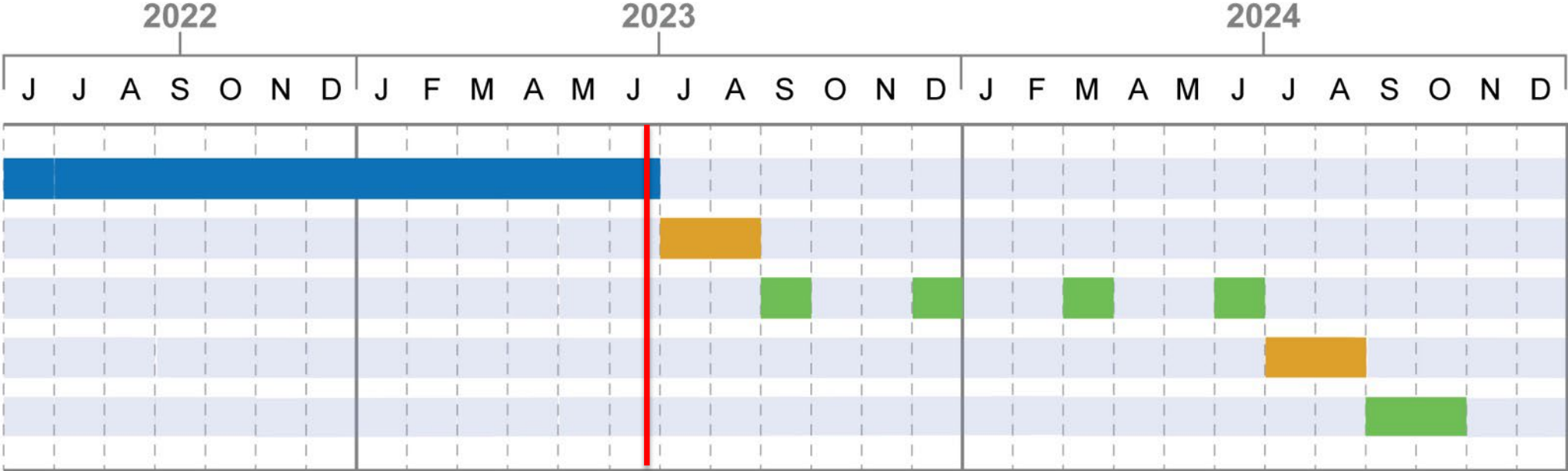
- Remove and replace the tunnel ceiling and repair overhead arch
- Demolish and replace the tunnel deck and roadway surface
- Repair tunnel walls and install painted fireproof panels
- Install new LED lights inside tunnel
- Upgrade CCTV and fire alarm systems
- Install new utility conduits and cables under the bridge deck
- Environmental resiliency – new vent buildings and pumps will reduce air pollution and improve storm preparedness



# Sumner Tunnel Project



# Tunnel Shutdown Schedule



# Managing Impacts



## Contract Protections

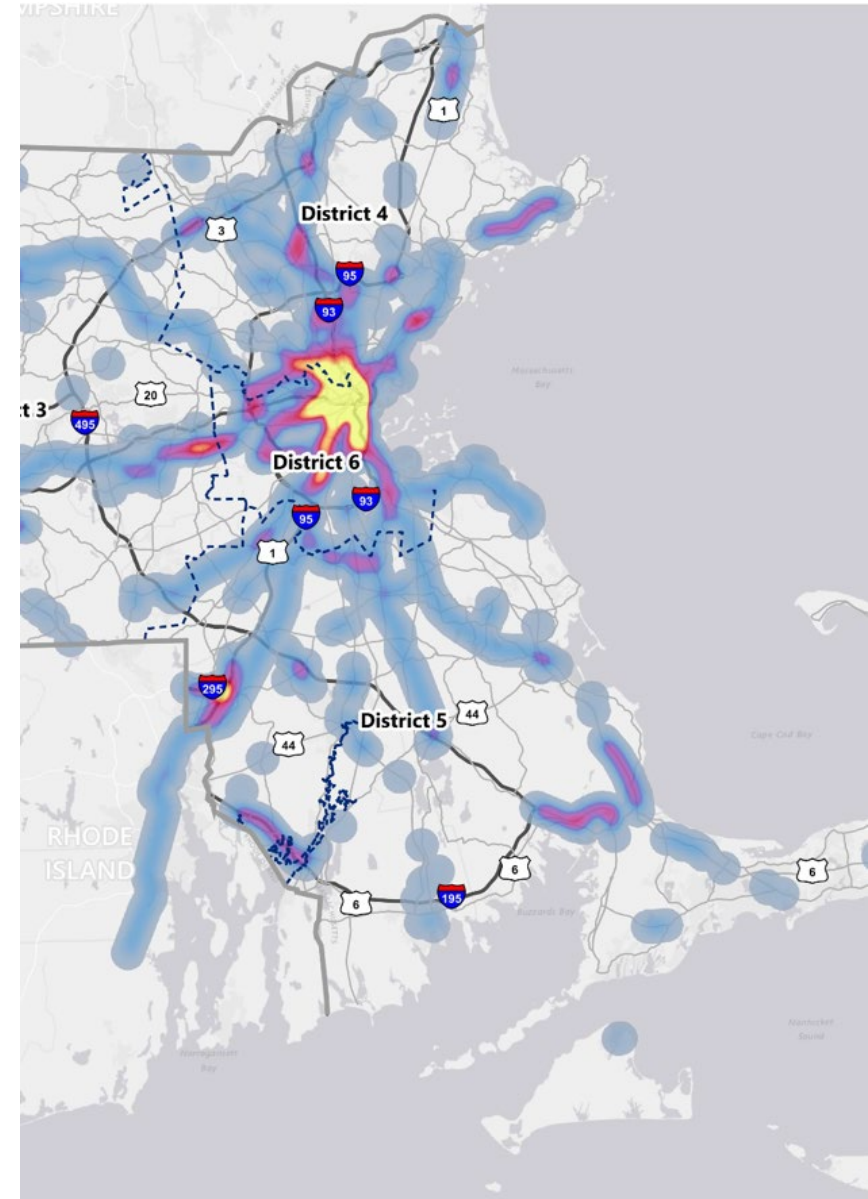
- Isolated intersection improvements – Signal phasing and timing changes, turn restrictions, lane utilization/lane changes
- Disposal of runoff and materials offside
- Field Monitoring Units – dust, water, noise, pest control, etc.
- Real Time Traffic Information
- Incentives/Disincentives for Design-Build team to ensure compliance with contract timelines



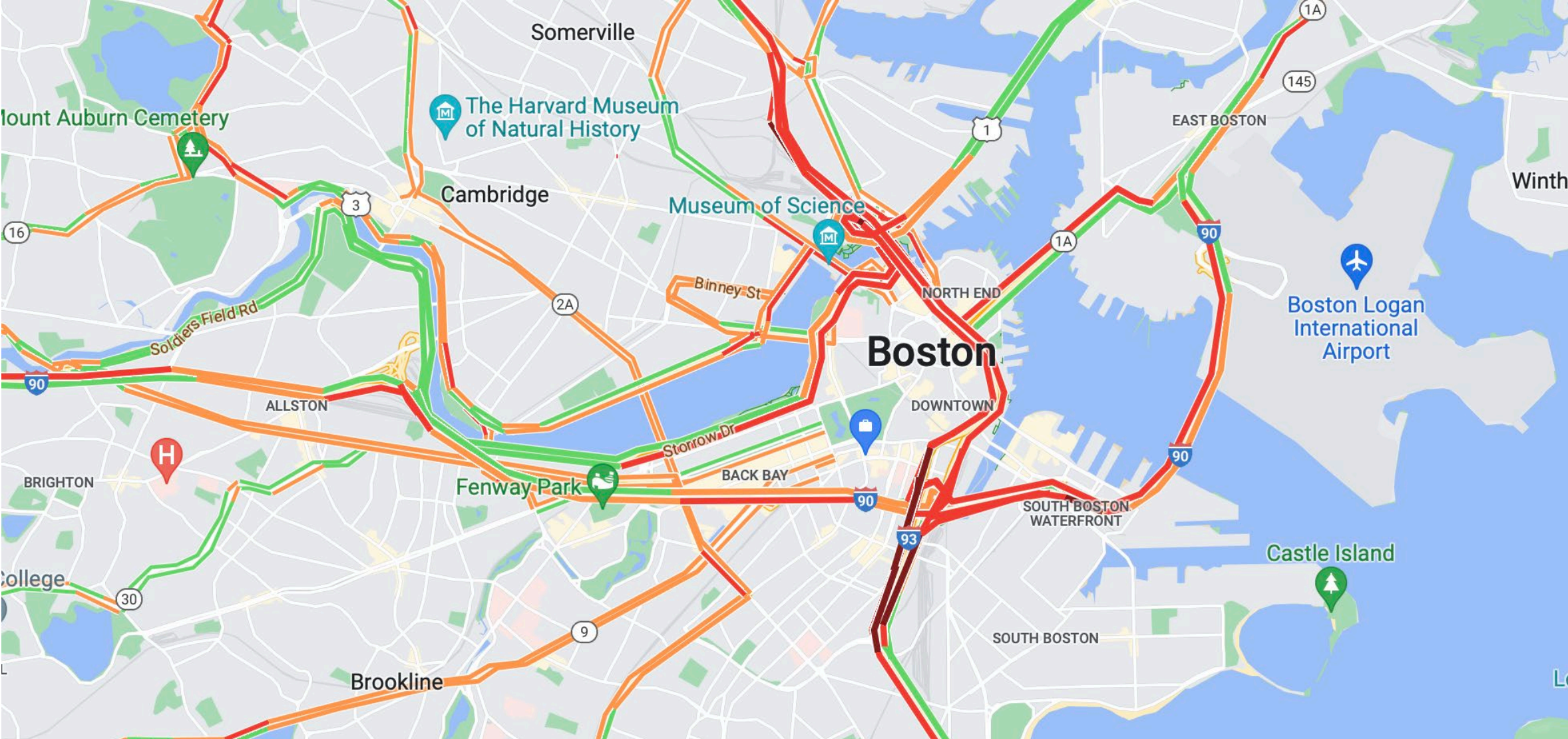
# Coordination with Adjacent Projects



- MassDOT has coordinated work with all major capital programs
- MassDOT has accelerated necessary maintenance activities in the area, including the Ted Williams (I-90) and Tip O’Neill (I-93) tunnels
- Where possible, work is being suspended on nearby projects
- Maintenance activity is being limited to emergency work and scheduled for off hours
- Existing traffic configurations for fixed work zones have been incorporated into the management plan
- Command Center will be set up for full closure



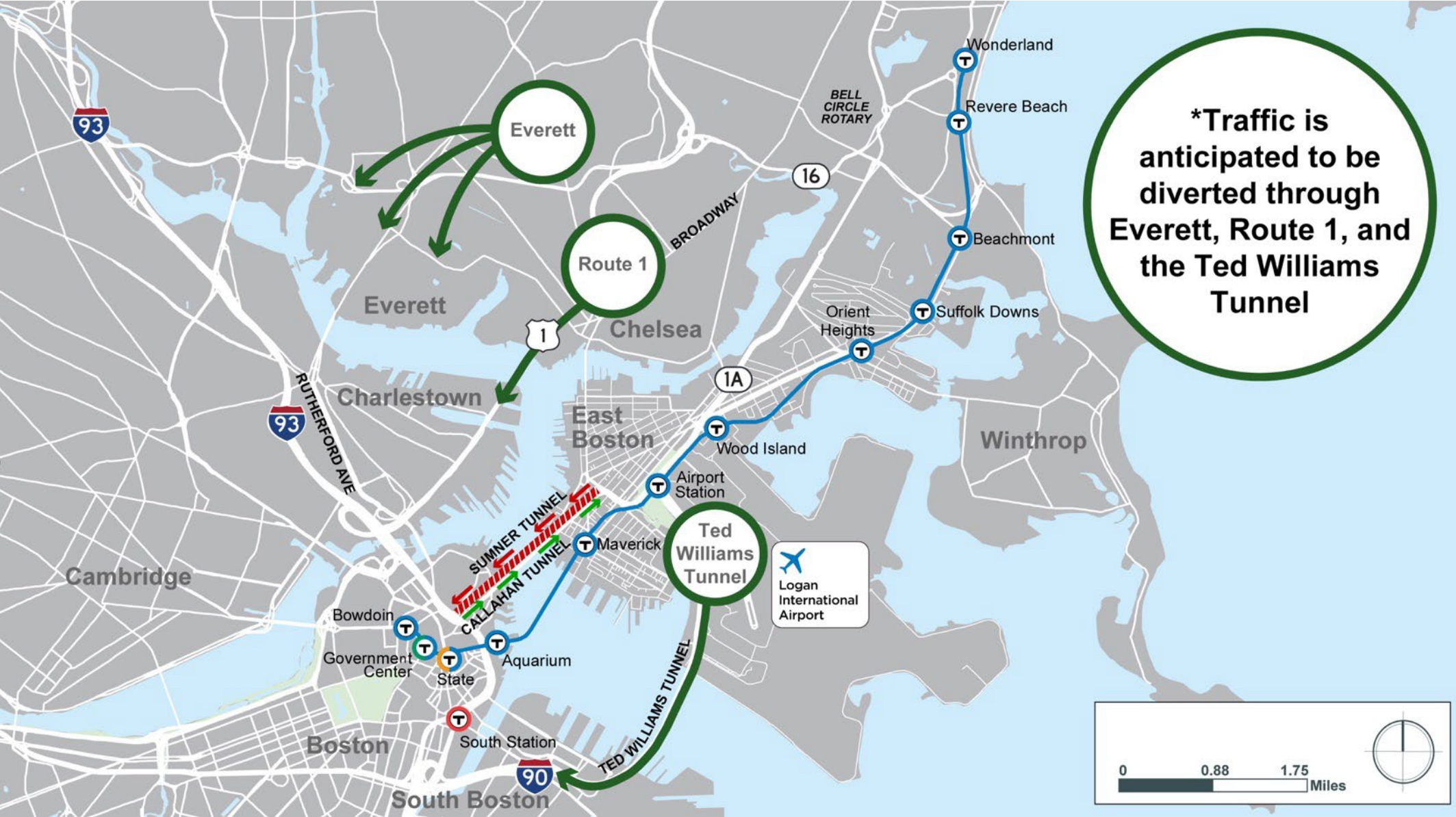
# Your commute will be impacted



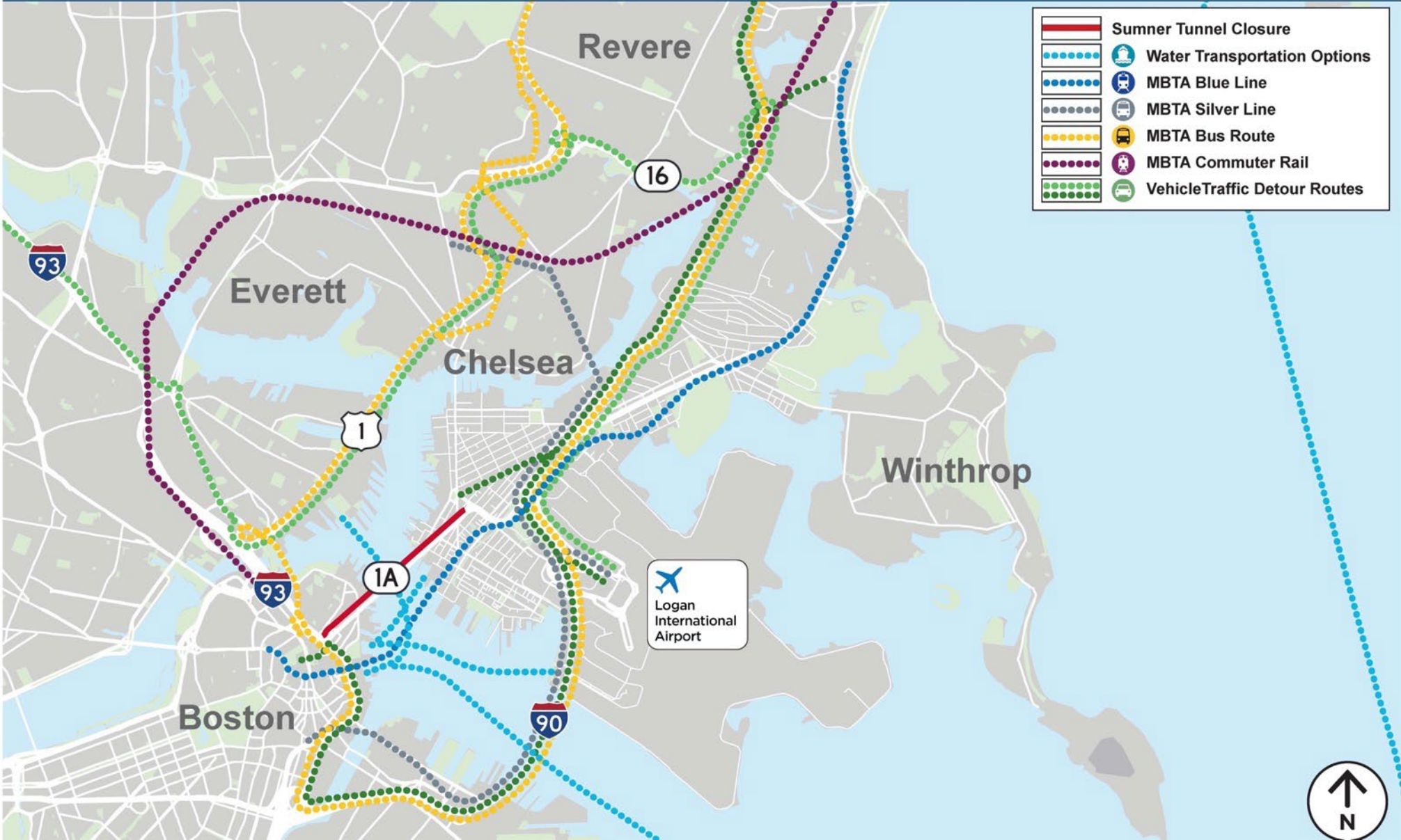
Regardless of where you are travelling from impacts should be expected approaching the city



# Traffic Diversions



# Travel options during shutdown



# Innovations During Construction



Before Demolition

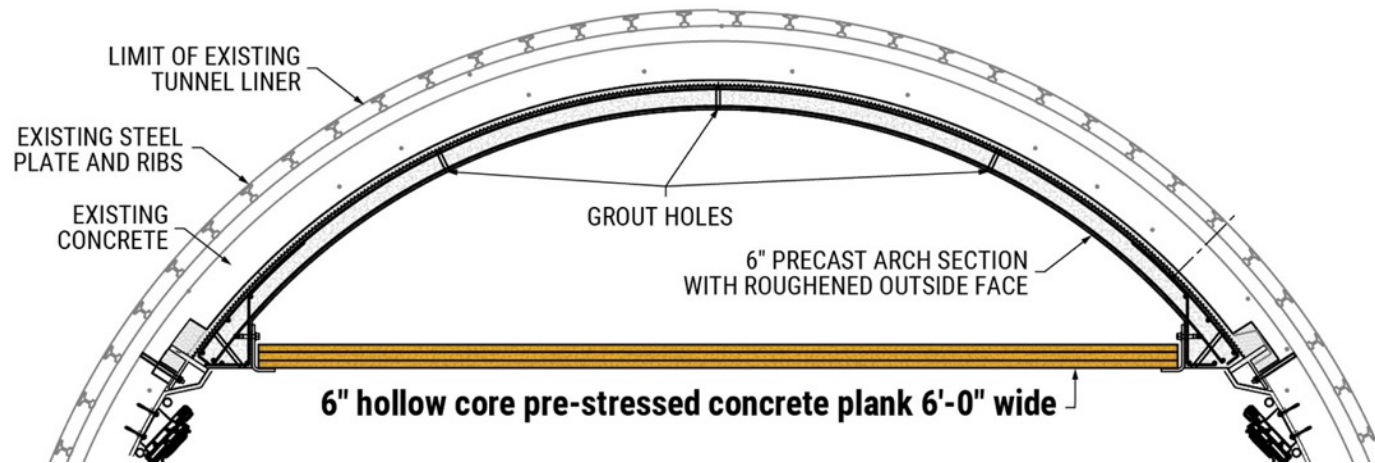


After Demolition

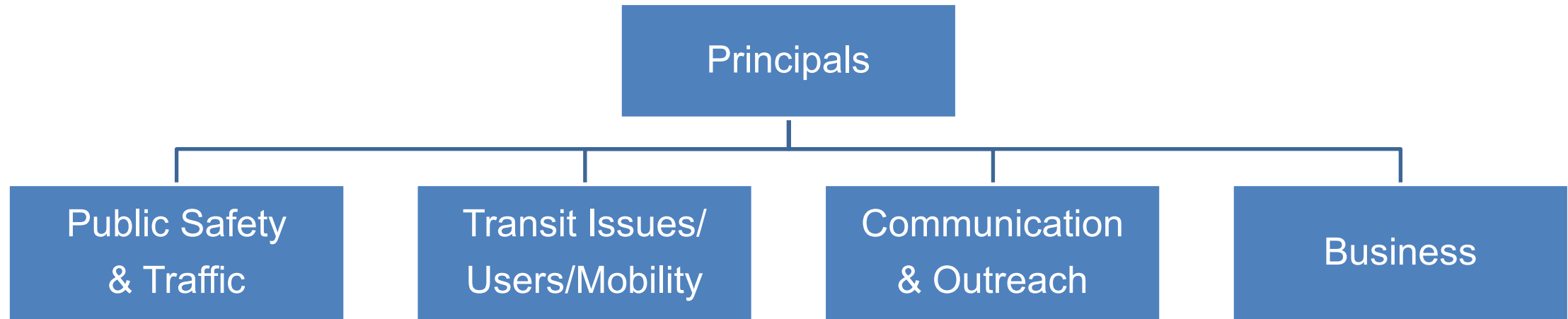


# Accelerated Construction

- Steel reinforcements for strength and fiber reinforcement for performance
- Grouted interlock between existing and proposed arch to protect existing arch from oxygen/contaminants
- Fire resistant main arch, hung plate provides additional fire protection



# Mitigation Working Group Structure



## Working Group Mission:

- Leave no stone unturned
- Review project impacts and current mitigation strategies
- Identify additional solutions and strategies to reduce impacts for all modes
- Limitations on proposals that involve changes to the scope of work – timing, duration, approach to construction, etc.
- Categorize strategies into low-cost easily implemented and those that require additional coordination, funding, and third-party assistance


# Managing Impacts: Public Safety




## Police, Fire, EMS

- MassDOT Red Book – Tunnel emergency management system for safety officials developed by MassDOT in partnership with federal officials and public safety officials updated on an annual basis.
- Sumner Tunnel Contingency Plan – Scenario planning document to ensure that an action plan is in place should things go wrong.
- Increased ambulatory service – Adding extra ambulances and 5 shifts with ongoing monitoring of response time metrics and adjusting as needed during construction.

**Sumner Tunnel  
Restoration Project**



**Draft  
Contingency Plan**  
Phases 2A and 3A (July 5 – November 30, 2023)  
June 8, 2023  
Revision 4



# Managing Impacts



## Blue Line and Parking

- The entire Blue Line in both directions will be fare-free to riders. Gates will be open at all Blue Line stations from Wonderland to Bowdoin.
- An additional train will be added to the Blue Line in the midday period to help support more riders riding the line.
- All MBTA parking lots and garages on the Blue Line will be reduced to \$2/day. Additional free parking is available near Wood Island Station.
- For paratransit customers, trips within  $\frac{3}{4}$  of a mile of the Blue Line will also be fare-free to riders.



## MBTA Commuter Rail and Parking

- Zone 1A (\$2.40) fares along the entire Newburyport/Rockport Commuter Rail line directly into North Station. Parking at Salem and Swampscott is reduced to just \$2 per day. Free parking will be available at all MBTA lots north of Salem, including Beverly, Gloucester, Hamilton/Wenham, Newburyport, North Beverly, Monserrat, Rowley, and West Gloucester.
- Blue Line benefits also apply. Travelers are encouraged to consider the Wonderland Station parking lot if coming from the North Shore.



## Discounted Tolls

- Discounted tolls will be provided for the Tobin Bridge and Ted Williams Tunnel for those registered in the Resident Discount Program.
- Discounted tolls for trucks at night (8pm to 5am) to encourage off-peak freight travel

# Managing Impacts



## East Boston and Seaport Ferry

- The East Boston ferry will be free during the tunnel's closure.
- The East Boston ferry service operates between East Boston at Lewis Mall and the downtown Boston area at Long Wharf. East Boston ferry service schedules are available online with all ferry service schedules available at [mbta.com/ferry](https://www.mbtta.com/ferry).
- Travelers can also use the existing Seaport ferry, which offers service between North Station and the Seaport and East Boston and the Seaport.



## Lynn Ferry

- Beginning Monday June 26, 2023, a new Lynn Ferry will operate five days/week on weekdays only, with 10 trips per day. Schedules are being finalized and will be released as soon as they are available.
- During the Sumner Tunnel shutdown, riders may use a Zone 1A fare (\$2.40). The Lynn Ferry will operate between the Blossom St. dock in Lynn to Long Wharf, Gate 4, in Boston (near Aquarium).
- Free parking at the City of Lynn-owned lot will be available near the Blossom St. dock. Bicycles are allowed on the ferry.

## Winthrop Ferry

- MBTA will operate Winthrop Ferry service beginning this summer. During the Sumner Tunnel shutdown, riders may use a Zone 1A fare (\$2.40).
- The route will provide service to Winthrop, Quincy, Logan Airport, Aquarium and Seaport five days a week. Schedules are being finalized and will be released as soon as they are available.

## Salem Ferry

- Travelers can also utilize the existing Salem ferry. Schedules available here: <https://www.bostonharborcruises.com/salem-ferry/>



# Managing Impacts: Logan Airport



## Logan Express

- There will be a 25% discount when you buy tickets online, and children under 17 ride free.
- Adding additional parking capacity at Braintree Logan Express.
- Providing passengers who take water transportation to the airport a “Ticket to Skip” to the front of the line for checkpoint screening.
- Added stop at Logan Airport by the Winthrop Ferry.



## Silver Line

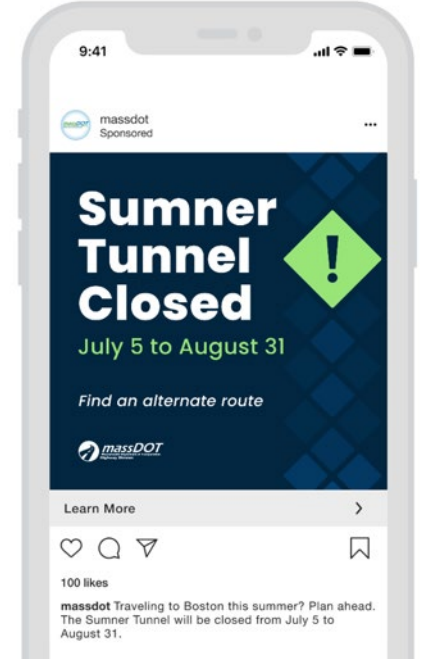
- An extra bus will be added to the SL1 schedule between 8 AM – 2 PM to add more service frequency due to increased trip time on the Ted Williams Tunnel.
- The SL1 stops at Logan Airport and is always free for commuters traveling from the airport to Boston.



# Public Messaging Campaign



- Launched a “**Ditch the Drive**” public messaging campaign to education travelers about their public transit options while the tunnel is closed
- Established a **marketing working group** with transportation advocates to ensure messaging is reaching needed audiences
- Disseminated a **social media toolkit** including graphics, videos, and draft social media posts with stakeholders, elected officials, and advocates
- Launching **multilingual ads** to inform travelers about the upcoming closure



# Mass511 – Project Specific Information



**Mass511** More Search Options

🔍 My Mass511 List View Help

🏠 Statewide 📍 Boston Metro

0 Critical Events

No results found. Make sure at least one map layer is turned on.

We can't find any critical road or weather events in your searched area.

Work Zone Delays

SUMNER TUNNEL CLOSURE

CLOSED UNTIL AUG 30

DETOUR TRAVEL TIMES

**Rt 1A NB/Bennington St to Bell Circle/Rt 16**

**Total travel time: 7 minutes**

Delayed: **3** minutes View On Map

**Bell Circle/Rt 16 SB to I-93 NB/Somerville**

**Total travel time: 22 minutes**

Delayed: **9** minutes View On Map

**Tobin Bridge/Rt 99 NB to I-93 NB/Somerville**

**Total travel time: 7 minutes**

Delayed: **3** minutes View On Map

Layers Legend

Select: Default / None

- Incidents and Closures
- Construction
- Future Construction
- Cameras
- Go Time Boards
- Traffic Conditions
- Mile Markers
- Weather Alerts
- Weather Radar
- Restrictions
- Other States' Info
- Commercial Vehicles

[Set Default Map View](#)

Map Satellite

# Spring Public Outreach



Meetings	Direct Outreach	Provide Information
<ul style="list-style-type: none"> <li>• Virtual legislative briefings</li> <li>• Virtual stakeholder and community group briefings</li> <li>• Virtual public meetings</li> </ul>	<ul style="list-style-type: none"> <li>• In person neighborhood pop-ups</li> <li>• Informational posters throughout the region</li> <li>• Emails to EZ-Pass holders in 25 municipalities</li> <li>• Outreach to Logan Express, Regional Bus Companies, and Rental Car Agencies</li> <li>• Outreach to abutters and diverse community groups</li> <li>• Outreach to businesses/organizations</li> <li>• Outreach to ridesharing and mapping apps</li> </ul>	<ul style="list-style-type: none"> <li>• Update project website</li> <li>• Provide regular project and traffic updates via GovDelivery email</li> <li>• MassDOT social media posts</li> <li>• Press briefings</li> <li>• Press releases</li> <li>• Newspaper notices</li> <li>• Radio/Media</li> </ul>

# Questions



**First Full Closure:**  
**July 5 – August 31**

**Plan your commute:**  
**[Mass.gov/Sumner-Tunnel](https://www.mass.gov/Sumner-Tunnel)**

**Project Email:**  
**[Sumner100@dot.state.ma.us](mailto:Sumner100@dot.state.ma.us)**

**Project Hotline:**  
**(508) 510-2920**

Use your phone to scan the QR code at the right to learn more about your alternative travel options.



# Questions

