



**Massachusetts Bay  
Transportation Authority**

# Safety Incident Update

---

MBTA Board of Directors – Safety, Health and Environmental Sub-Committee

April 13, 2023

Asia Williams, Acting Director of Safety Investigations

Timothy Lesniak, Director of Commuter Rail & Ferry Safety

# Safety Incidents Update – Speed Restrictions

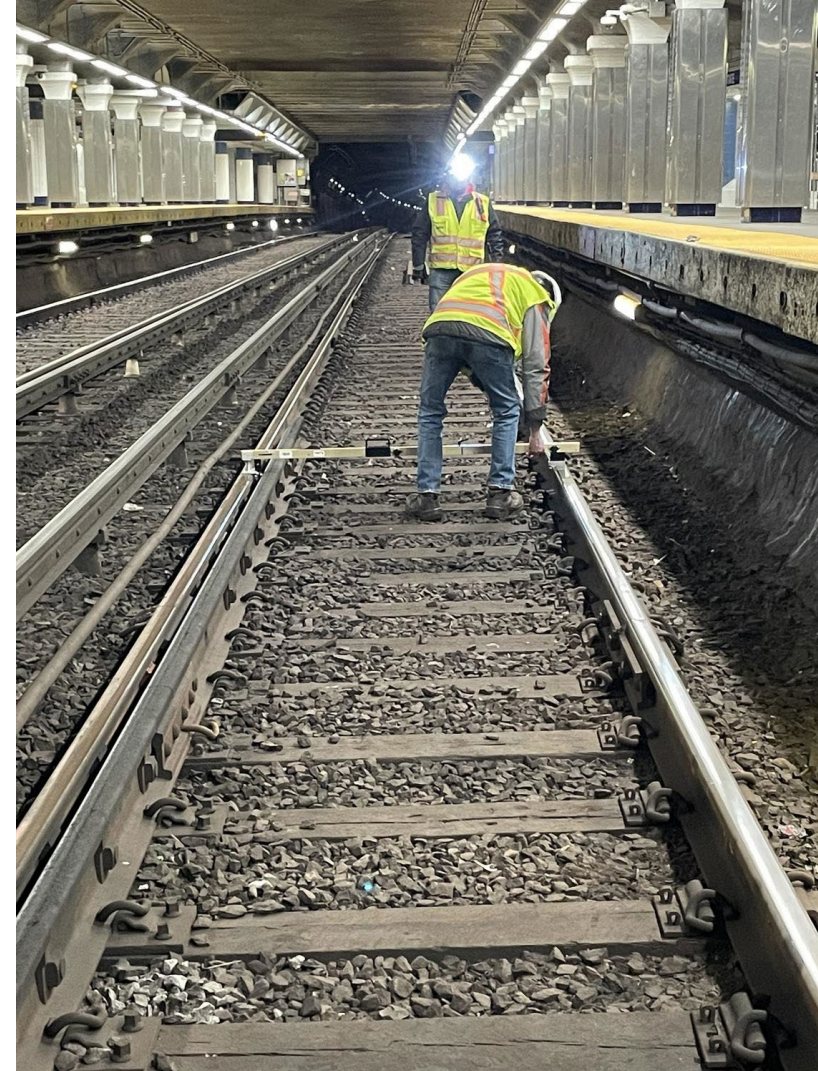
---

- On March 9, 2023, the MBTA instituted a global speed restriction because the Authority was not satisfied with the quality of the documentation that supports the mitigation that followed recent geometry car testing.
- The geometry car is used to test several parameters of track geometry, including measuring position, curvature, alignment of track, smoothness, and the cross level of the two rails. The car identifies Green, Yellow, and Red Track Conditions



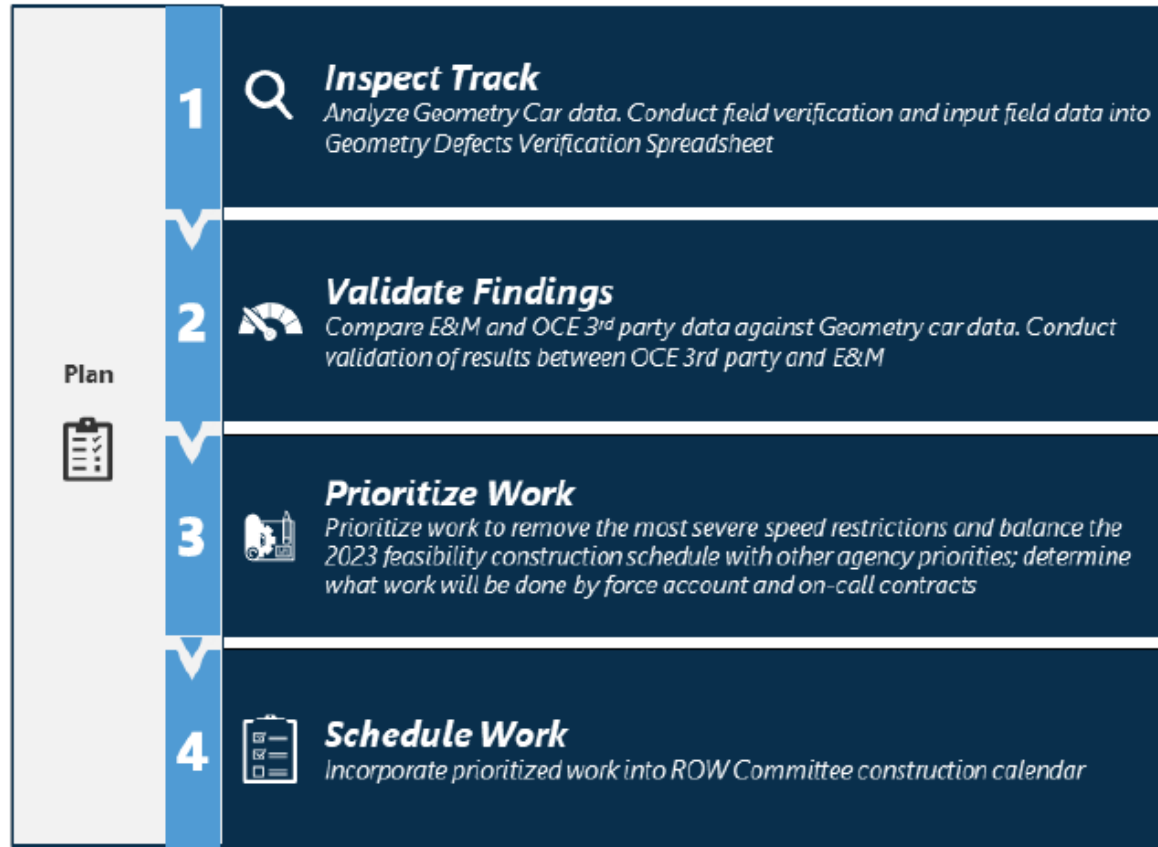
# Safety Incidents Update – Speed Restrictions

The MBTA developed a systemwide process required to remove the speed restrictions. The process is organized into three different phases; Plan, Execute and Follow Through.



# Safety Incidents Update – Speed Restrictions

## Systemwide Geometry Defect Speed Restriction Removal Process



# Safety Incidents Update – Speed Restrictions

---

- Since the global speed restriction MBTA Safety performed verifications on track inspections, validation activities and repairs.
- MBTA Safety is involved in the work acceptance of lifting the speed restrictions, and the final documentation of the work being completed.
- MBTA Safety continues to collect information and investigate this incident.



# Near Miss Events

---

- On March 13<sup>th</sup> the Construction Logistics Supervisor called the dispatcher to run the test train. The personnel without authorization changed their location to State Street from Sullivan where access was granted to check for track defects. While a work crew check for track defects, Test Train approached State Street Station. The train was signaled to stop.
- On Monday, March 21<sup>st</sup>, an employee called the OCC to request access to the Right-of-Way. After performing a radio check, the access was granted by the OCC Dispatcher. The employee called the OCC to report that a Train disobeyed the signal to stop and continued to pick up speed.
- On March 24<sup>th</sup> work was scheduled at Cabot Yard Test track with power off for work on the existing utility line. The work crew was granted access to the ROW without notification and approval by the Construction Logistics Supervisor and, entered a Diversion area without proper authorization.
- On April 7<sup>th</sup> after being provide track access, it was discovered that the last eastbound train was approaching on approach, the crew cleared from the ROW, and the flagger contacted OCC to relay what had occurred and was told they could return to work.



# Taken/Planned Corrective Actions

---

- In light of the recent near misses, the Safety Directive 01-2023 (Personnel Accessing the Right of Way, issued on March 24, 2023) and the Safety Flash 23-04 (Proper Procedures for ROW Access, issued on March 27, 2023).
- Pursuant to the April 7, 2023 Near Miss, MBTA Safety is issuing a Corrective Action Plans to Operations which will require, at a minimum:
  - Updating SOP 18.0 with:
    - An updated process
    - Specific directions to follow the updated process.
    - A means to ensure that all steps are accounted for.
    - Steps to be taken on the occasion of a safety event during ROW access (reporting and documenting)
  - Documented Training of all OCC Dispatchers on the updated process



# Safety Incidents Update - Transit

Date	Time	Mode	Location
3/1/2023	6:25 PM	Blue Line	Wonderland Station
3/1/2023	3:55 PM	Bus	Route 28
3/1/2023	4:01 PM	Red Line	Harvard Square Station
3/8/2023	2:39 PM	Bus	Route SL5
3/9/2023	5:25 PM	Blue Line	Wood Island Station





# Safety Incidents Update - Transit

Date	Time	Mode	Location
3/18/2023	6:38 PM	Green Line	Museum of Fine Arts Station
3/20/2023	2:40 PM	Green Line	Boston University Central
3/21/2023	6:34 PM	Green Line	Chiswick Road Station
3/26/2023	12:14 AM	Bus	Route 22



# Safety Incidents Update – Commuter Rail & Ferry

Date	Time	Route	Location
3/13/2023	2:46 PM	Eastern Route	Everett – Second St
3/20/2023	4:09 PM	Northeast Corridor	Wickford Junction
3/23/2023	12:19 PM	Fitchburg Route	Camp Interlocking



# Conclusion

---

# Questions?

