

CAPITAL 
TRANSFORMATION
A Division of Capital Programs

Green Line Transformation Program Update

*MBTA Contract No. Z91PS25: Green Line
Transformation PM/CM Services*

Angel Peña, Chief of Capital Transformation

December 15, 2022

Capital Transformation | *A Holistic Approach*



To improve the quality of service for MBTA riders and neighboring communities through strategic capital investments



Future Transformation Programs >>

Green Line Transformation | Achievements 2018-2022



Improved Safety & State of Good Repair

Safety begins with making sure assets and infrastructure are brought to a state of good repair and kept in that condition while reducing the risk of major disruptions



Enhanced Accessible

Accessibility means creating an experience that all riders can equally enjoy, which includes making sure the stations and vehicles are ADA-compliant, equitable, and fully accessible




Legacy Car Replacement

This includes the design and procurement of new vehicles and the infrastructure needed to support them





Increased Capacity


Increasing capacity to meet future ridership requires implementing systems to provide the reliable service our riders deserve



64,000 Feet
of Track Renewal


32 Units
of Special Trackwork





1 Superstructure
Lechmere Viaduct




7.4 Route Miles
of Signal System


37 Upgraded
Intersections




3 New Stations
Accessible




10+ Upgraded
Crosswalks/Crossings

100% Design
6 more Accessible Stations on the D and E Branches





15% Design
Achieving Accessibility at 14 Stations across the B & C Branch





15% Design
Traction Power & Signal Upgrades





Preliminary Design
Vehicle Maintenance Facilities




Secure Funding
for Required Infrastructure

Procurement
Type 10 NTP August 2022




Enter Project Development
with FTA for CIG Core Capacity Grant



Green Line Transformation | Continuing Progress 2022



Improved Safety & State of Good Repair

Lechmere Viaduct Rehabilitation



Crews reinforced all spans with carbon fiber wrap, renewed more than 3,500 feet of track, 70,000 feet of signals and replaced the overhead catenary system

Train Protection & Track Upgrades B Branch



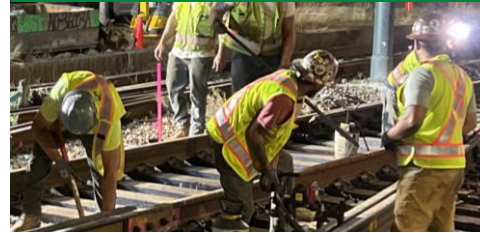
3,200 feet of track, four pieces of special track work, one vehicle intersection and one pedestrian crossing were replaced in addition to the installation of wayside equipment

Train Protection & Track Upgrades C Branch



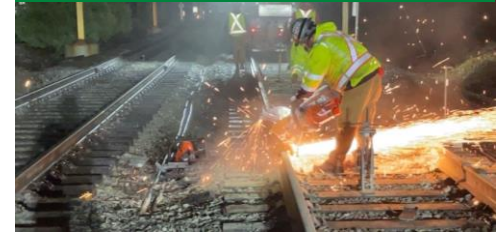
Over 1,500 feet of track was replaced as well as the installation of train protection wayside equipment

Train Protection & Track Upgrades E Branch



Over 2,500 feet of track and two pieces of special track work was replaced as well as the installation of train protection wayside equipment

Train Protection & Track Upgrades D Branch



Over 6,700 feet of track and six pedestrian crossings were replaced in addition to the installation of train protection wayside equipment

Green Line Transformation | *Future GLT Projects*

Green Line Train Protection System



New Signaling System to Improve Safety

Newton Highlands Accessibility Improvements



Improving Station Accessibility and Safety

Symphony Station Accessibility & Utility Relocation



Improving Station Accessibility and Safety

Vehicle Maintenance Facility Upgrades



Modernize VMFs to support the supercar

Green Line Track Renewal



Bring Tracks to a State of Good Repair

B Branch Station Accessibility Improvements



Upgrading 5 Station to 100% Accessibility

D Branch Station Accessibility Improvements



Upgrading the D Branch to 100% Accessible Stations

Type 10 Supercar



Increasing Capacity with New Vehicles

Green Line Transformation | *PM/CM Benefits*

\$27M will support the GLT Program as the team addresses the additional demands for improvements from riders and stakeholders following the successes supported by the initial \$55M investment from 2018 – 2022.



Improved Efficiency

- ✓ Cost savings through contract negotiations
- ✓ Improved delivery schedules through resource evaluations
- ✓ Supplemental safety and quality oversight



Focus on the Big Picture

- ✓ Address the expanded GLT improvement portfolio based on growing needs
- ✓ Holistic plan for Green Line improvements
- ✓ Continue to enact a focused view on improving quality of service on Green line



Integrate & Align Data Systems

- ✓ Provide comprehensive program controls for program budget and schedule
- ✓ Build and maintain reporting system on project and program performance



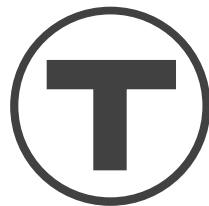
Evaluate Plans

- ✓ Design and constructability reviews
- ✓ Independent cost and schedule estimates
- ✓ Core Capacity design, coordination, and implementation support

Request of the MBTA Board



To authorize the General Manager, or his designee, to amend MBTA GEC Contract NO. Z91PS25 with Mott MacDonald, for continued program management and construction management support and staff augmentation for the Green Line Transformation Program, in a form approved by the General Counsel, not to exceed the amount of \$26,861,409.00, and to execute any necessary or ancillary documents in the name and on behalf of the Massachusetts Bay Transportation Authority to effectuate this Agreement.



CAPITAL 
TRANSFORMATION
A Division of Capital Programs