



South Coast Rail Fall River Construction Update

October 13, 2022



Agenda

- Welcome and Opening Remarks
- Project Overview
- Construction Update
- Noise Mitigation
- Project Benefits
- Community Outreach
- Questions and Answers



*Installing conduits under platform at Church Street Station,
August 2022*

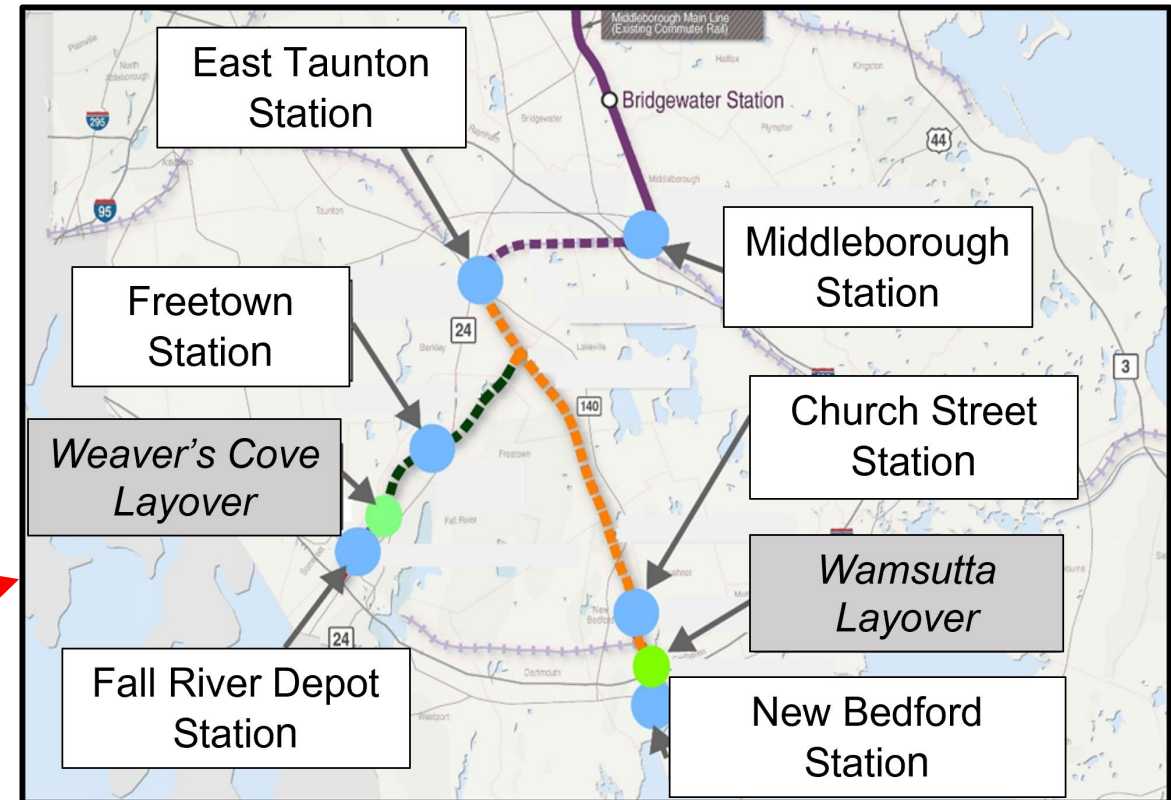
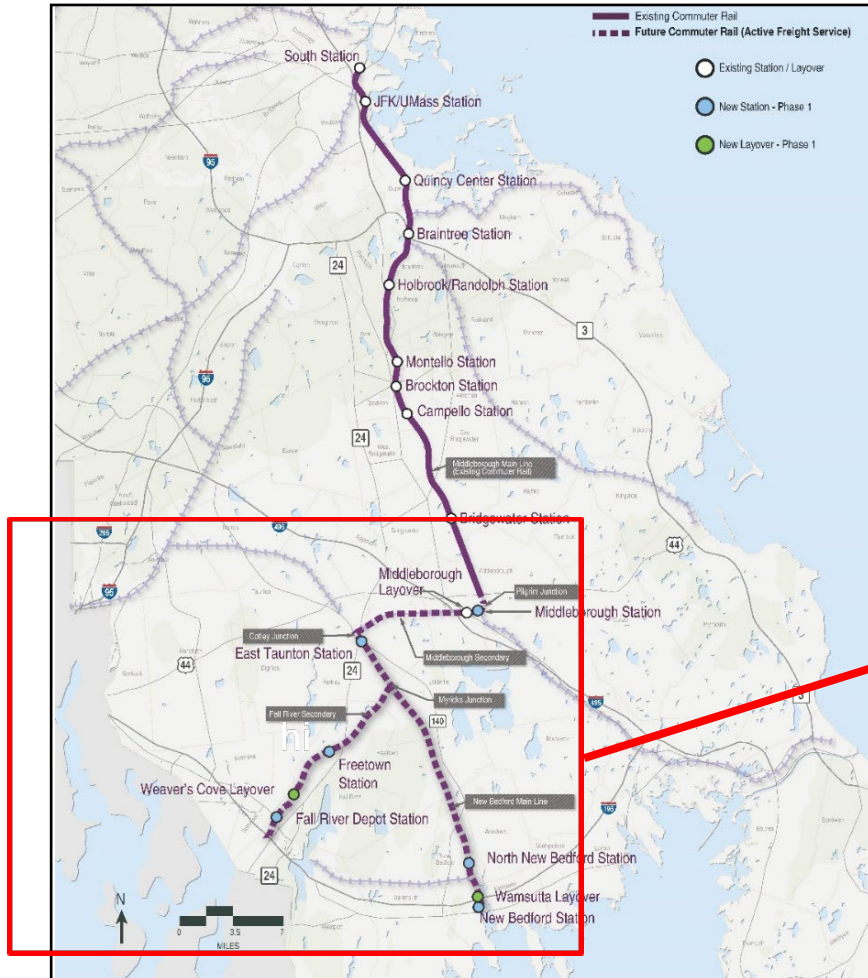
SCR is on Track



- The project continues to advance on time and on budget
- Fall River Line contract is on schedule at 81% completion (as of August 2022) – expected to be finished by Fall 2022
- The Middleboro/New Bedford Line/Signals contract is on schedule at 53% completion (as of August 2022)
- Construction is furthest along at the Fall River Depot, Middleborough and Freetown Stations: footings, station platform foundations, walls and bridges and culverts are visible
- SCR reached the midpoint of construction in Spring 2022, and Revenue Service is anticipated for late 2023

*Laying ties near Padelford Street in Berkley,
August 2022*

Phase 1 Stations and Layover Facilities

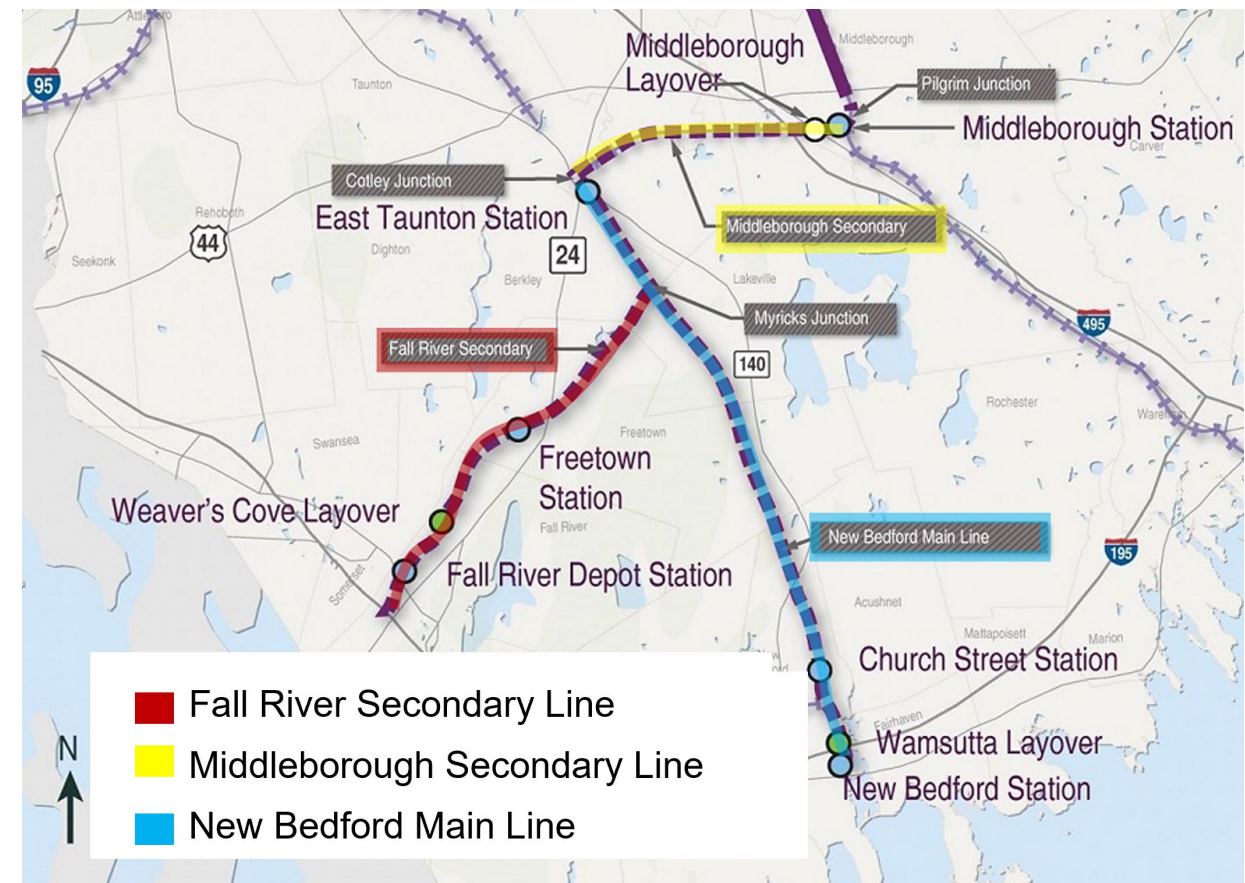


- New construction: six stations and two layover facilities

Phase 1 Major Contracts



- Fall River Secondary Line Contract: \$159M (*Skanska/DW White*)
 - 49,282 of 58,990 linear feet of track have been installed (84%)
- Middleborough Secondary/New Bedford Main Line and Systems Contract: \$403.5M (*SCR Constructors*)
 - 56,211 of 211,834 linear feet of track on the Middleborough-New Bedford Contract (27%)
- Off-site Traffic Mitigation Contract: \$8.5M (*Newport Construction*)
 - Has begun in Middleborough



Fall River Secondary Line Nearing Contract Completion



- Major construction on the FRS station structures in Fall River and Freetown will be completed this fall
- At Weaver's Cove Layover final work includes grading the soil and paving the employee parking lot - some of this work will continue into the winter months and early spring, depending on weather conditions
- The contractor will be working on a punchlist, completing items such as fencing, site cleanup and site utilities through December or into early 2023
- The signal, communication and Positive Train Control safety system will need to be installed, commissioned, and tested before the trains will run on this line



Aspects of Construction



- A great deal of the work is accomplished directly from - and on - the right-of-way
- Other tasks require road/neighborhood access to the right-of-way
- Some work is accelerated using 24-hour track outages, sometimes requiring roadway lane closures and/or detours

Fall River Secondary Line 10-Week Look Ahead

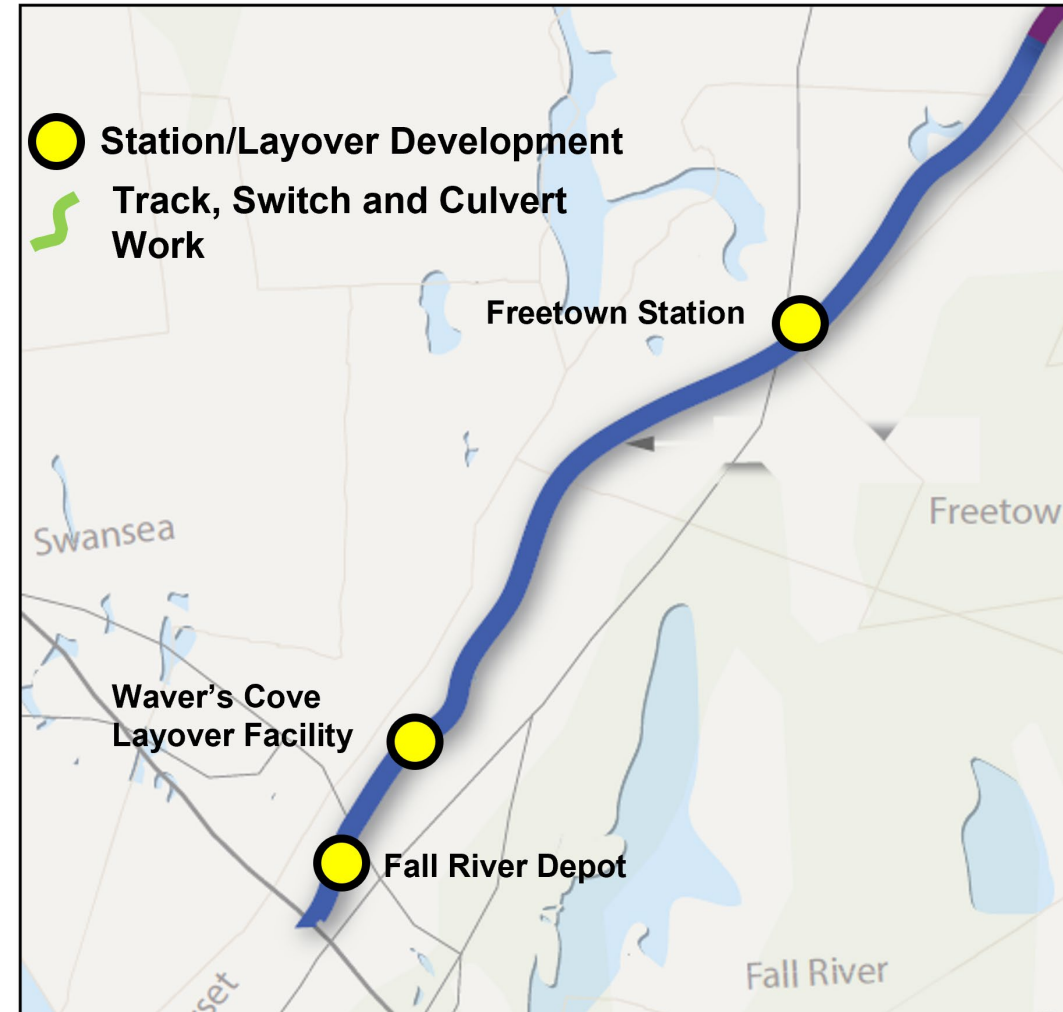


Myricks Junction to Fall River Station

- Major construction on Fall River and Freetown stations to be completed this fall
- Remaining station work includes paving and lining parking lots, install parking lot lights, test signals and fiber options, and seed and grade landscaped areas
- At Weaver's Cove, final work includes grading the soil, finishing the crew building, and paving the employee parking lot
- Also continuing with fencing, site cleanup and site utilities
- Track work including rail destressing, completing sidings and other special track work

Track Outage Work (24-hour work over 3-5 days)

- Final outages are in development
- Contractor may take advantage of New Bedford Main Line contract outages with extended shifts to complete rail destressing



Off-site Traffic Mitigation Work



Newport Construction Corporation was awarded the contract to complete off-site traffic mitigation for SCR

- Work includes improvements outside of the railway to roadways, intersections, traffic signals, sidewalks, pedestrian crossings and signage in Middleborough, Lakeville, Taunton, New Bedford, and Fall River
- These improvements will help to connect South Coast Rail into the communities and improve pedestrian and vehicular access around station areas

This mitigation is part of the Section 61 Finding of the Final MEPA Certificates (environmental review process)



Middleborough Station roadway connection at Route 105/I-495

- **Current Work:** Road, intersection and sidewalk work in Middleborough/Lakeville near new Middleborough Station site along Route 105, Route 28, and I-495
- **Upcoming work:** Road and pedestrian connections near East Taunton Station site along Route 140

Progress Photos: Fall River Depot



Fall River Depot view north on platform, September 2022



Fall River Depot, view over Pearce Street Bridge, September 2022



Station roof placement, September 2022

Progress Photos from Freetown Station



Freetown Station platform light pole installations, August 2022



Freetown Station paving, August 2022

Progress Photos at Weaver's Cove Layover



Weaver's Cove Layover crew building, July 2022



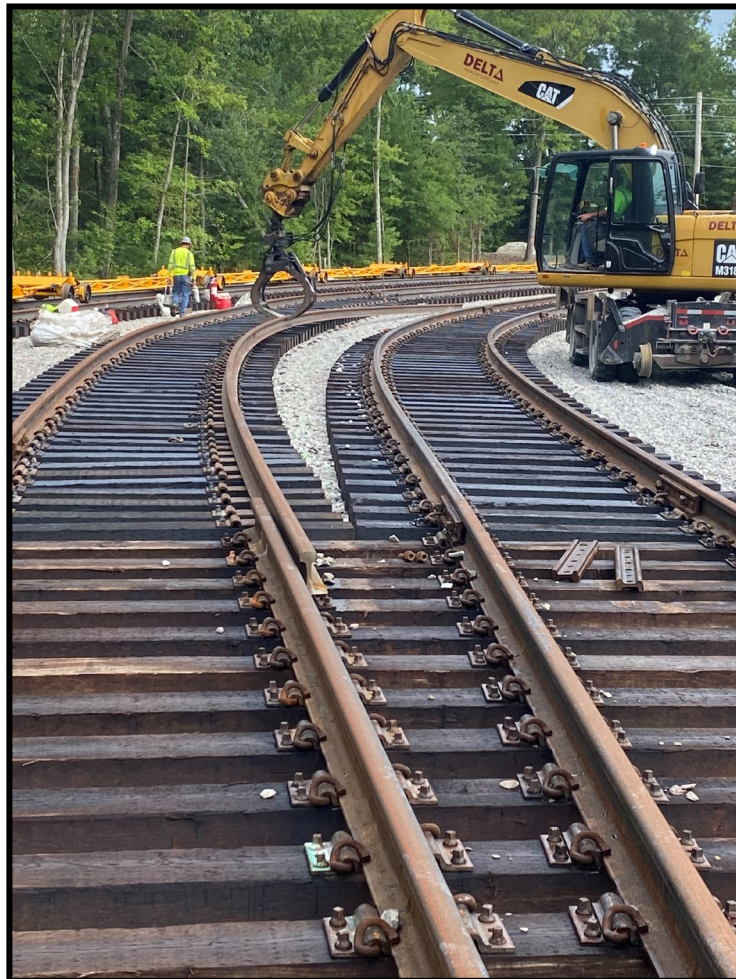
Weaver's Cove Layover prep for paved access to rail yard, August 2022

Weaver's Cove Layover



*View south of yard area,
September 2022*

What to Know about Construction



- Typical hours of construction are Monday-Friday, 7am – 7pm (or until dark)
- Exception for track outages: 24-hours work periods, typically over 3-5 days
- Pest and rodent management are required and ongoing
- Dust control and management are required and monitored
- Although the stations and layover will appear to be complete by early 2023, signal installations and other work will be continuing until testing and commissioning begin

Residential Noise Mitigation Program



OVERVIEW

- The MBTA is providing noise mitigation where commuter rail service is predicted to substantially increase noise exposures at residences adjacent to the track based on Federal Transit Administration (FTA) guidance
- Developed in accordance with FTA guidelines and the 2013 South Coast Rail Final Environmental Impact Statement/Report (FEIS/R)
- The list of eligible dwellings approved via the SCR environmental review process is final

PROGRESS

- First round of 59 letters to property owners (group #1) went out in May to properties in Fall River, Freetown, Berkley, and New Bedford
- Second round of 46 letters to property owners (group #2) went out in late July in Berkley, Fall River, Freetown, and Taunton
- The letters to group #3 will be sent this month (55 property owners)

The program continues to reach out to homeowners who have not yet responded

SCR and Safety



- The ROW has been used for many things including recreation, vandalism and homeless encampments
- SCR is developing a multi-part safety program that includes:
 - Videos for school age children and the public
 - Coordination with communities on homeless camps
 - Planning with police and fire departments



SCR Benefits for Fall River

- Commuter Rail service will be restored to Fall River for the first time in over 60 years
- Fall River will be included on the MBTA Advisory Board, the agency's community advisory organization, currently composed of the 175 cities and towns in the MBTA service area
- Commuters will experience a reliable, fast transit connection to other economic hubs, including Metro Boston, providing an alternative to Route 24, which experiences frequent congestion
- SCR will provide better access to high-quality jobs for residents of the region, better access for businesses to the metro-Boston labor force, and connections to health care and educational clusters
- It will enhance tourism opportunities that will showcase the culturally and historically rich South Coast area



Community Outreach



Project Website & Email

- mbta.com/projects/south-coast-rail
- SouthCoastRail@dot.state.ma.us

Site Visits and Community Meetings

- SCR team meets with residents, businesses, and elected officials to discuss issues and update stakeholders

Railroad Construction Hotline

- Railroad construction-related issues are received on the hotline at 617-222-4099
- Hotline answered Monday – Friday, between 7:00am and 3:30pm by contractor staff; callers can leave voicemail outside of hotline hours that will be answered day by contractor staff on the next business

Weekly Construction Updates

- Construction updates issued weekly to more than 5,000 subscribers
- Abutters directly notified of upcoming 24-hr/day work periods with SCR flyers

Noise Mitigation Contact

- 617-449-7387
- scrnoise@mbta.com

Roadway Construction Hotline

- For roadway construction-related to off-site mitigation work: 423-375-4086