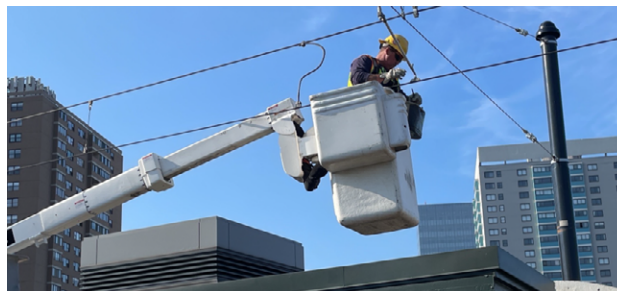


## Week in Review and Lookahead

Friday, September 2, 2022

Preparations continue for the [Green Line Train Protection and Track Upgrades](#) on the D Branch, which will take place during three nine-day closures in September and October.



### Green Line Diversion: Union Square to Gov't Center



- ✓ **This Week** | Workers continued making adjustments to the catenary power lines across the Lechmere Viaduct, that will eliminate a temporary 10 mph speed restriction, allowing trains to operate at the system's designed speed of 25 mph
- **Lookahead** | Crews will complete adjustments to the Lechmere Viaduct catenary power lines. The GLT team will continue to prepare for [train protection and track upgrades](#) work on the D Branch beginning September 24

#### 2022 Construction Schedule

- ✓ **B Branch** (Boston College – Kenmore): Monday, June 20 – Friday, July 1 (complete)
- ✓ **C Branch** (Cleveland Circle – Kenmore): Monday, July 11 – Friday, July 22 (complete)
- ✓ **E Branch** (Heath St – Copley): Saturday, August 6 – Sunday, August 21 (complete)
- **D Branch** (Riverside – Kenmore): Saturday, September 24 – Sunday, October 30