

**Massachusetts Bay
Transportation Authority**

**MBTA South Station Tower 1& Cove Interlocking
Improvements**

Request for Amtrak PI DCA2373 Approval

MBTA Board of Directors

September 29, 2022

Dan Beaulieu, Sr. Project Manager, Commuter Rail

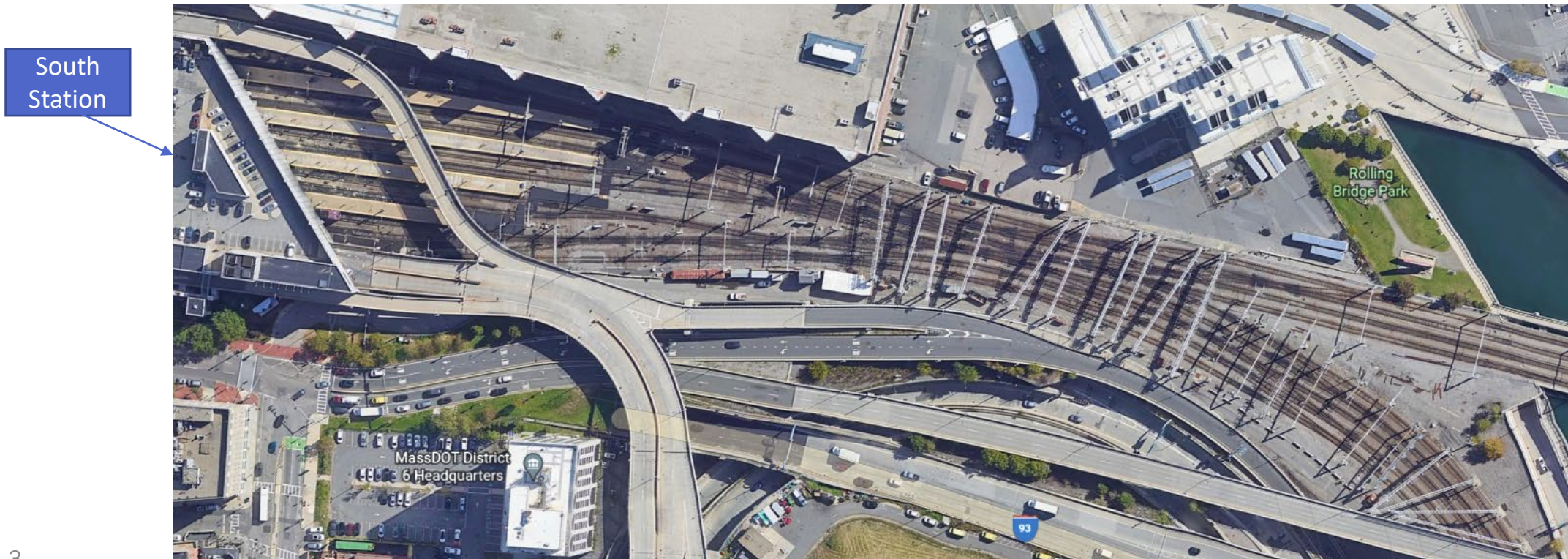
Contract Action

- Today's Board action will provide approval for the execution of external force account under the Project Initiation (PI) "Tower 1 & Cove Interlocking Amtrak Support"
- Amtrak will provide the following services:
 - Flagging support
 - Signal crews to support construction activities
 - Final signal connections, cutover activities
 - Track inspections
 - Outage coordination



Project Overview

- The Tower 1 & Cove Interlocking Project is located at South Station. It will upgrade the track and signal system in the interlocking to improve the reliability and resiliency of service at South Station. This work will also support future growth of the MBTA and Amtrak.



Project Scope

- Replace in-kind track and interlocking infrastructure
- Install new master signal house and upgrade existing signal systems with microprocessors, replace wayside signal cases and signals
- Replace existing back up power generator
- Install switch heaters and trough systems
- Upgrade communication system to Centralized Electrification and Traffic Control (CTEC)
- Replace lighting with LED and add supplemental lighting system
- Upgrade security (cameras and fencing)



Project Goals

- Address the immediate State-of-Good-Repair needs of Tower 1 & Cove Interlocking to maintain current services
- Improve resiliency, security (through CCTV) and system safety (proper grounding and fencing)
- Provide immediate operational reliability to the south-side Commuter Rail system, Amtrak's Northeast Corridor and Lake Shore Limited services.
- Upgrade the system to support future ridership growth anticipated by both the MBTA and Amtrak



Project Existing Conditions

Tower 1 Tracks (North)



Tower 1 Tracks (NEC)



Project Existing Conditions

Existing CIH Location & Tracks



Prop. Fence Along Highway



Project Funding

MassDOT/MBTA was awarded an FRA State of Good Repair (SGR) Grant to fund the construction of this project

- FRA grant funds of \$41.2M allocated to Discretionary Grant 21FRA1
- MBTA funds of \$79.07M have been allocated under R19A01 and R23A08
 - \$68.6M Northeast Corridor PRIIA (Passenger Rail Investment and Improvement Act) Baseline Capital Charge (BCC) program funds
 - \$10.4M Amtrak through the Attleboro Line Agreement Settlement Funds



Project Schedule

| MBTA Tower 1 & Cove Interlocking Project | | | Current Submission PS&E CTD | |
|--|--|--------|--------------------------------|--|
| Activity ID | Milestone Name | Dates | Duration from NTP | |
| 100DC | 100% Design Completed | Dec-21 | | |
| PSE | PS&E Design Completed | Mar-22 | | |
| AWD | Procured & Award Construction Contract | Jan-23 | | |
| MS.01 | MS#1 NTP | Apr-23 | | |
| MS.02 | MS#2 Substantial Completion | Sep-27 | 1592 | |
| MS.03 | MS#3 Final Acceptance | Mar-28 | 1772 | |
| | | | | |



Board action

VOTED:

To authorize the General Manager, or his designee, to award and execute PI DCA2373 “Tower 1 & Cove Interlocking Amtrak Support” with Amtrak, for a term of 6 years, in an amount not to exceed \$24,187,575.00, in a form approved by the General Counsel, and to execute any necessary or ancillary documents in the name and on behalf of the Massachusetts Bay Transportation Authority to effectuate this Agreement.

