

Orange Line Transformation

Construction Project Updates



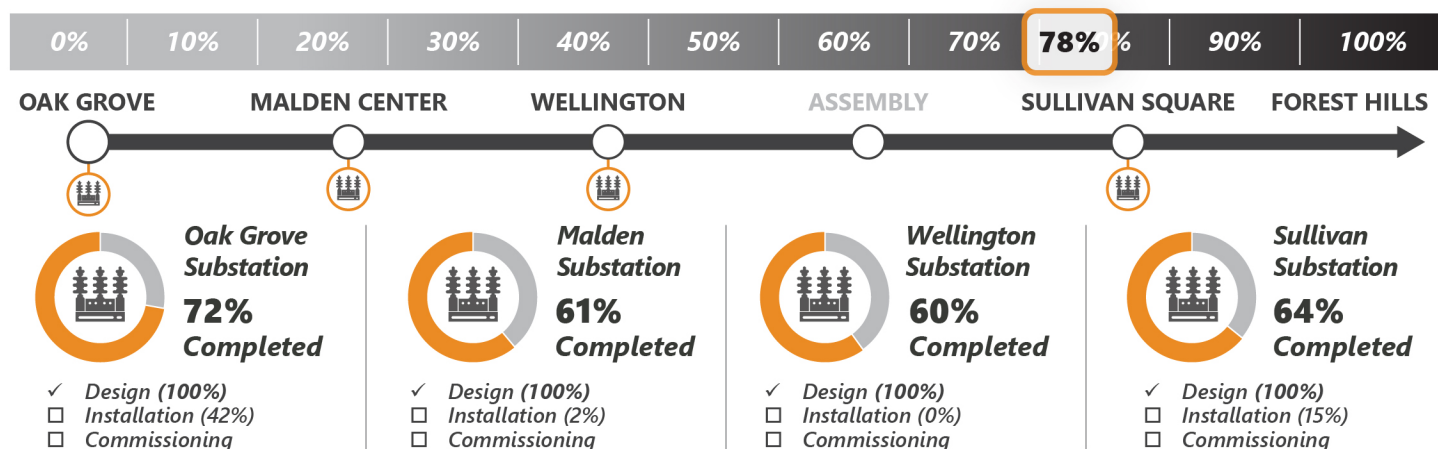
Week in Review and Lookahead

Friday, July 22, 2022

Progress continues on the [Orange Line Transformation](#), including work at Wellington Yard and Vehicle Maintenance Facility and on traction power upgrades. Read more below about the latest updates



Traction Power Substations



Traction Power Substations: Modernize the third rail power supply to reduce the risk of service disruptions; develop a power system capable of supporting additional Orange Line service

- ✓ **This Week** | Crews continued testing the mobile power substations at Sullivan Station to ensure proper uninterrupted communication with the MBTA Operations Control Center (OCC). At Oak Grove crews are painting the interior of the substation and laying out locations for new equipment installations
- **Lookahead** | At Oak Grove crews will continue installing new electrical equipment in the substation

Wellington Yard and Maintenance Facility Updates



0% | 10% | 20% | 30% | 40% | 50% | 60% | 70% | 80% | 90% | **94%** | 100%

21,895 Feet of Track



92% Completed

69 Units of Special Track



85% Completed

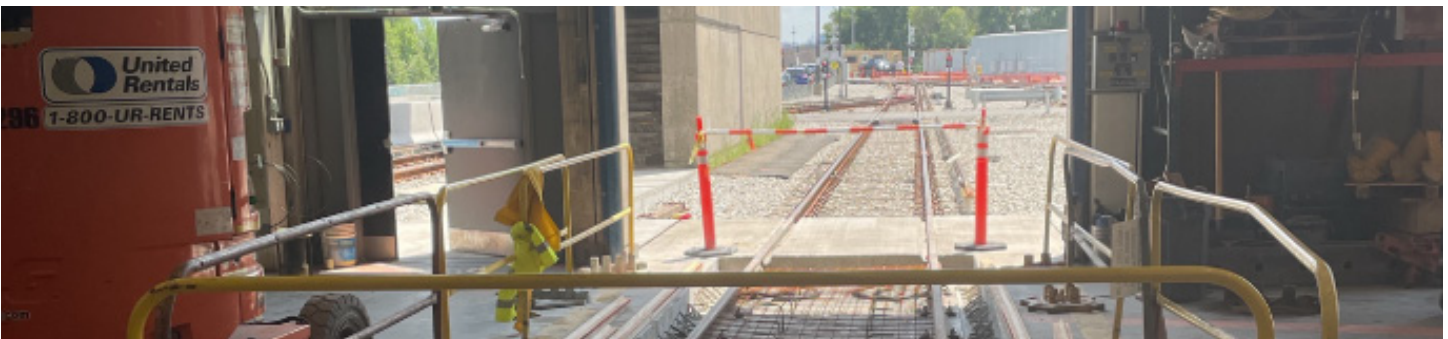
Traction Power & Signals



84% Completed

Wellington Yard: Upgrade Wellington Yard to increase service capacity, replace outdated infrastructure, and enhance safety.

- ✓ **This Week** | Crews completed the replacement of five tracks in the south yard and continued with signal testing and electrical installation
- **Lookahead** | Crews will be returning several tracks in the south yard to MBTA Operations



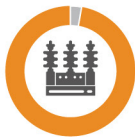
0% | 10% | 20% | 30% | 40% | 50% | 60% | 70% | 80% | **87%** | 90% | 100%

Building Upgrade



90% Completed

Power Substation



97% Completed

Train Wash



82% Completed

Maintenance Bays



60% Completed

Wellington Maintenance Facility: Modernize the Vehicle Maintenance Facility to improve vehicle maintenance; reducing customer wait times, provide cleaner cars, and deliver safer operations.

- ✓ **This Week** | Crews continued the installation and painting of the overhead steel walkway system and steel mesh safety fencing. Contractor also advanced the replacement of tracks inside the facility. Crews began installing the new flooring system in the electronics repair room
- **Lookahead** | Replacement of additional rail within the facility. Crews will continue to install overhead steel walkway framing that will provide access to the top of the trains for maintenance