

Orange Line Transformation

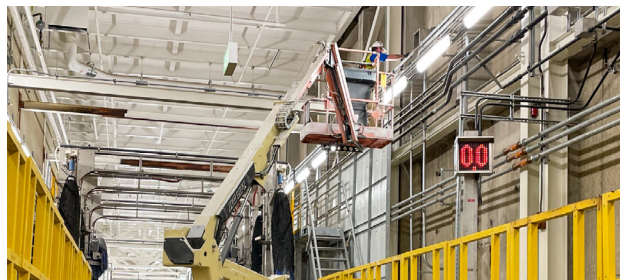
Construction Project Updates



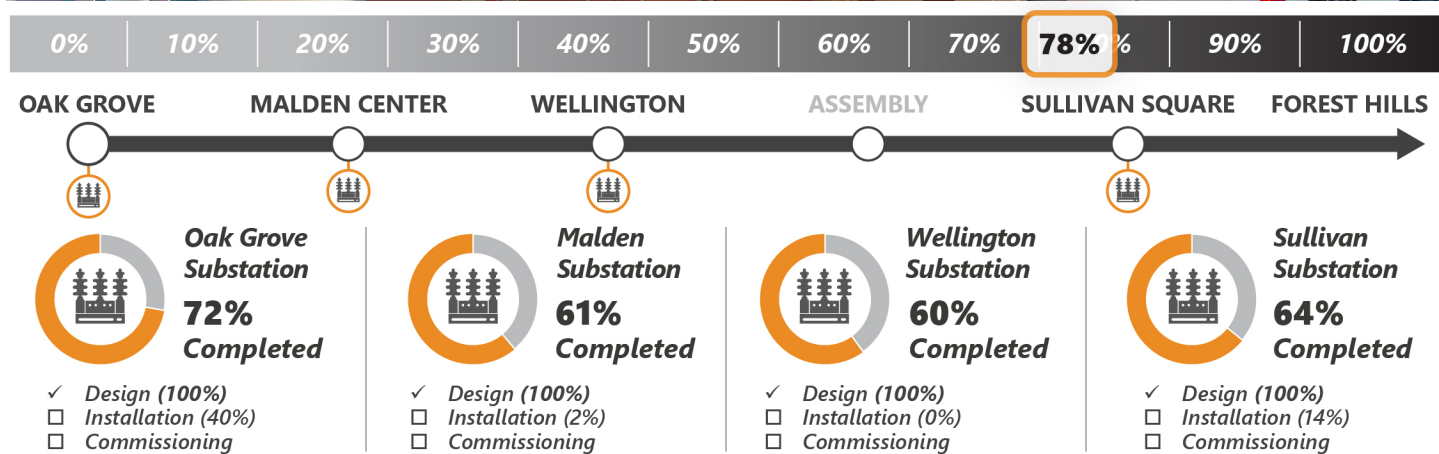
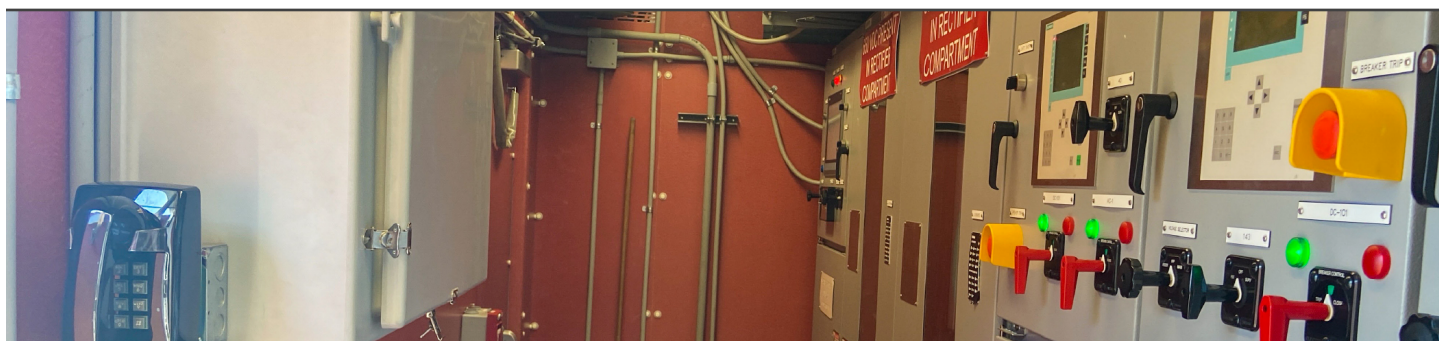
Week in Review and Lookahead

Friday, May 20, 2022

The Orange Line Transformation (OLT) Program continues to make progress on upgrades to the [Wellington Yard and Maintenance Facility](#) and [Traction Power Substations](#). Continue reading to learn more about our progress



Traction Power Substations



Traction Power Substations: Modernize the third rail power supply to reduce the risk of service disruptions; develop a power system capable of supporting additional Orange Line service

- ✓ **This Week** | The team transferred the third rail power supply from the existing substation at Oak Grove Station to the temporary mobile power substations. Crews continued work at Sullivan Station to test the mobile power substations so the MBTA Power Department can remotely communicate with and diagnose the power system
- **Lookahead** | Crews will continue testing of the Sullivan Square mobile power substations. At Oak Grove, the team will monitor and test the mobile power substation

Wellington Yard and Maintenance Facility Updates



0% | 10% | 20% | 30% | 40% | 50% | 60% | 70% | 80% | **93%** | 100%

21,895 Feet of Track



92%
Completed

69 Units of Special Track



85%
Completed

Traction Power & Signals



84%
Completed

[Wellington Yard:](#) Upgrade Wellington Yard to increase service capacity, replace outdated infrastructure, and enhance safety.

- ✓ **This Week** | Crews continued the installation of new yard tracks leading into the south side of the maintenance facility and installed new underground electrical utilities for powering the trains. Crews continued testing the new train signal equipment, which controls train movements in the yard
- **Lookahead** | Crews will continue work in the south yard and look to install additional yard tracks and electrical utilities in the coming weeks



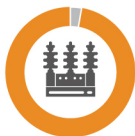
0% | 10% | 20% | 30% | 40% | 50% | 60% | 70% | 80% | **87%** | 100%

Building Upgrade



90%
Completed

Power Substation



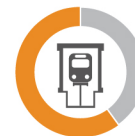
97%
Completed

Train Wash



82%
Completed

Maintenance Bays



60%
Completed

[Wellington Maintenance Facility:](#) Modernize the Vehicle Maintenance Facility to improve vehicle maintenance; reducing customer wait times, provide cleaner cars, and deliver safer operations.

- ✓ **This Week** | Crews completed the train wash track reconstruction and returned that track to MBTA Operations. Crews continued painting structural steel in the maintenance bays and installing new electrical wiring for the facility lighting and fire alarm system. Cleaning and lining of existing drainpipes was completed
- **Lookahead** | Painting of structural steel and installation of electrical wiring will continue in addition to track upgrades inside the maintenance facility