

Orange Line Transformation

Construction Project Updates



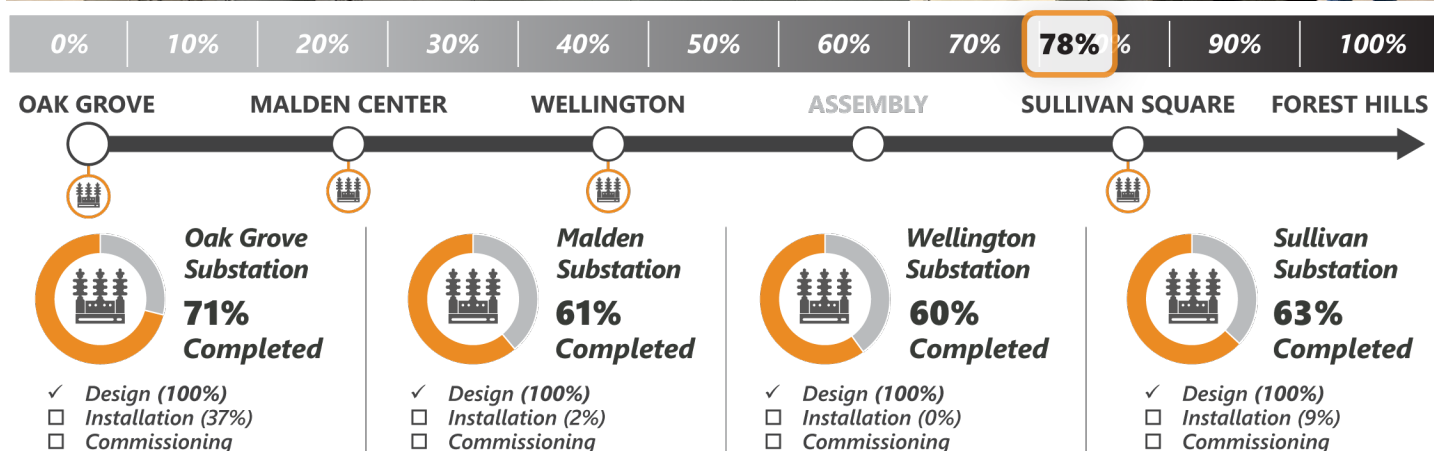
Week in Review and Lookahead

Friday, April 15, 2022

The [Orange Line Transformation \(OLT\)](#) team would like to wish all runners the best of luck in Monday's marathon. We also wish a safe and enjoyable experience to the spectators and visitors that this event draws. Check the [MBTA's Marathon Guide](#) to learn about service during Marathon Monday/the Patriot's Day holiday, and read about our progress on Orange Line projects below



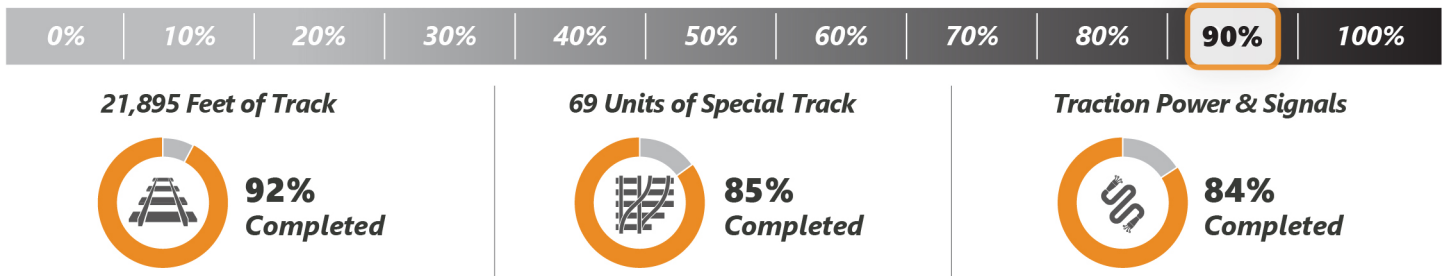
Traction Power Substations



[Traction Power Substations](#): Modernize the third rail power supply to reduce the risk of service disruptions; develop a power system capable of supporting additional Orange Line service

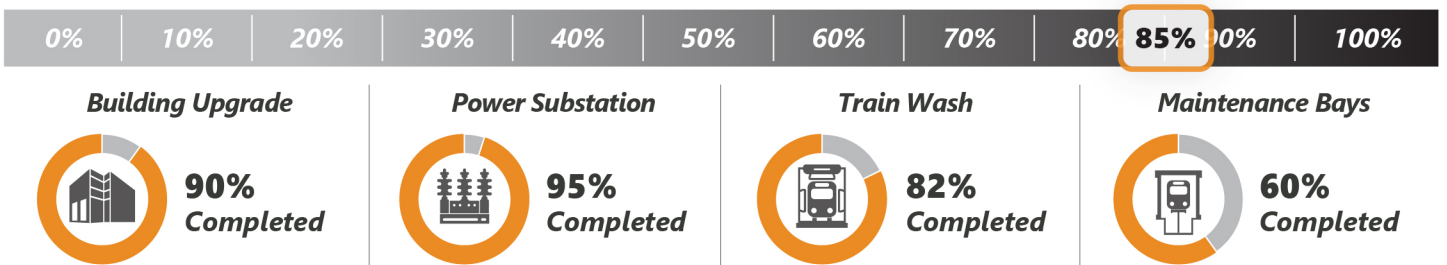
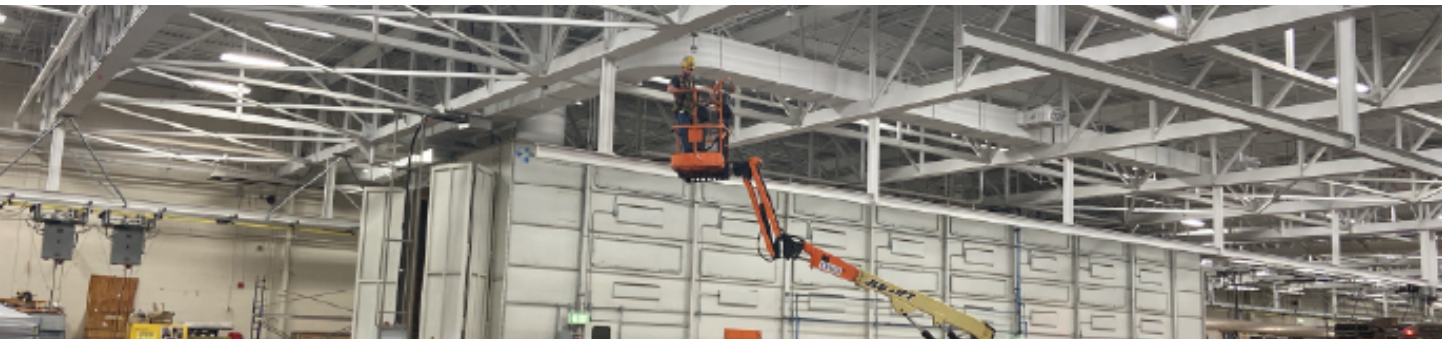
- ✓ **This Week** | Carried on with point-to-point testing at Oak Grove. Began battery installation at Sullivan Traction Power Substation
- **Lookahead** | Continue point-to-point testing at Oak Grove. Power department to perform testing prior to cutover. Complete battery installation at Sullivan and remove the old battery system

Wellington Yard and Maintenance Facility Updates



Wellington Yard: Upgrade Wellington Yard to increase service capacity, replace outdated infrastructure, and enhance safety.

- ✓ **This Week** | Removed old ductbanks and began construction of new ductbanks. Started removal of South Yard tail track
- **Lookahead** | Lay ballast and ties as crews begin track reconstruction of the South Yard tail track



Wellington Maintenance Facility: Modernize the Vehicle Maintenance Facility to improve vehicle maintenance; reducing customer wait times, provide cleaner cars, and deliver safer operations.

- ✓ **This Week** | Completed applying epoxy and protective cover (sealant) on floor in the traction power room. Continued installing steel plate reinforcing under the new wash track
- **Lookahead** | Continue sandblasting to remove rust built-up on steel supports under maintenance tracks. Start installation of conduit for new lighting