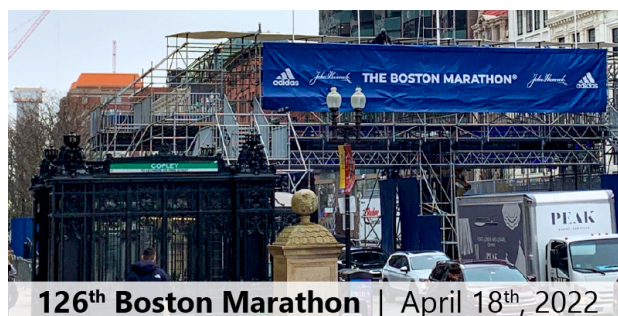


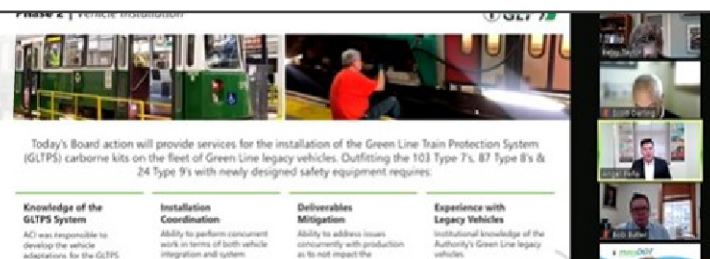
Week in Review and Lookahead

Friday, April 15, 2022

This weekend, final preparations are underway for the 126th Boston Marathon on Monday, April 18th. **This historic event will impact service** – please remember that Copley Station will be closed all day Monday, and South St, Kent St, and Saint Mary's St will be closed from 10 AM – 6 PM. Find out more in the [MBTA's Marathon Guide](#), and keep reading to see our latest progress



New Projects in Design



- ✓ **Recap** | Over this past winter, the GLT team was excited to announce the completion of some major investments in the Green Line system, including the [D Branch Track and Signal Replacement](#) and [Lechmere Viaduct Rehabilitation](#) projects, as well as the reopening of [Brookline Hills station](#). These efforts will set the stage for improved service to our riders throughout the years to come. We couldn't have accomplished these goals without the support of our local partners and stakeholders
- **Lookahead** | As we continue preparing for the 2022 construction season, community engagement will be at the forefront of everything we do – we're currently developing plans for the installation of safety equipment on all four branches, improvements to pedestrian crossings around the system, and important accessibility upgrades to stations. We continue to coordinate with local authorities, and soon we will be announcing public meetings to provide more information and get input from riders and the communities we serve, so stay tuned!

