

# Red Line Transformation

## Construction Project Updates



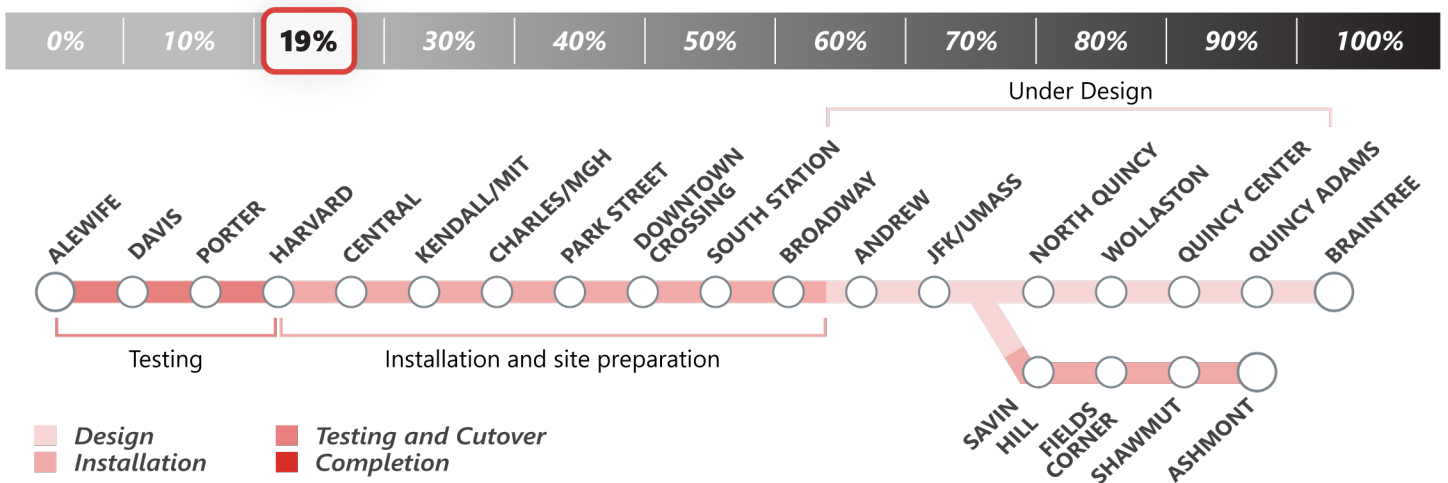
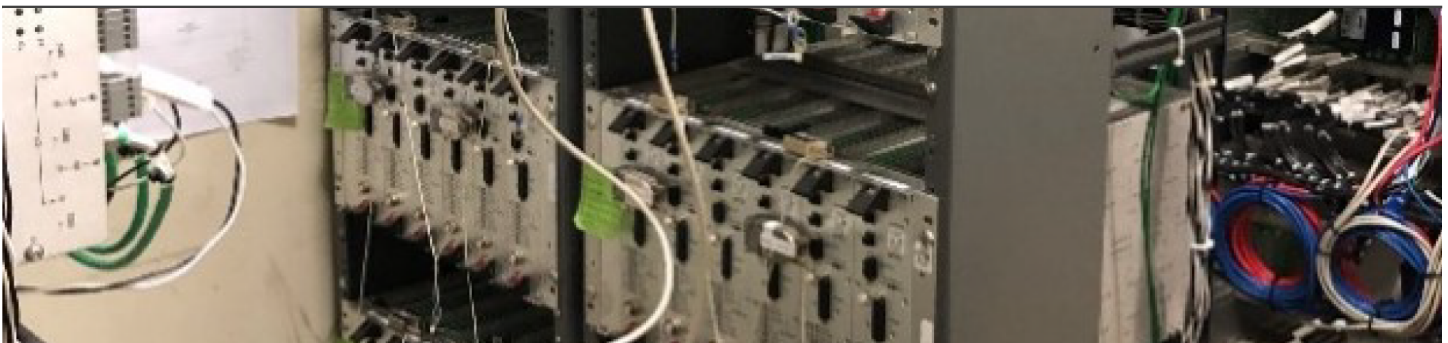
## Week in Review and Lookahead

Friday, January 28, 2022

As January comes to a close, work for the Red Line Transformation (RLT) Program continues to advance. Read more below about the **Cabot Yard and Maintenance Facility**, and our **Signal Upgrades Project**.



### Signal Upgrade



[Signal Upgrade](#): Increasing capacity, through reducing headways with modernized signals.

- ✓ **This Week** | Continued signal system replacement testing from Harvard to Alewife, and facility assessment at JFK and south lines
- **Lookahead** | Proceed with facility assessment at JFK and south lines, and signal system replacement testing Harvard to Alewife

# Cabot Yard and Maintenance Facility Updates



32,500 Feet of Track



**35% Completed**

50 Units of Special Track



**34% Completed**

Traction Power & Signals



**32% Completed**

**Cabot Yard:** Upgrade the Yard to increase service capacity, replace outdated infrastructure, and enhance safety.

- ✓ **This Week** | Assembled and prepared special trackwork components for next phase of yard reconstruction, and progressed work on traction power substation
- **Lookahead** | Continue traction power substation improvements along with preparation work and assembly of special trackwork for next phase of yard and approach track reconstruction

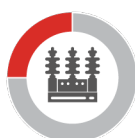


Building Upgrade



**30% Completed**

Power Substation



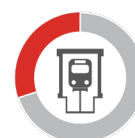
**25% Completed**

Car Wash



**20% Completed**

Maintenance Bays



**30% Completed**

**Cabot Maintenance Facility:** Modernize the Vehicle Maintenance Facility to improve vehicle maintenance; reducing rider wait times, provide cleaner cars, and deliver safer operations.

- ✓ **This Week** | Installed electrical, mechanical and architectural finishes for Parts Storage Building. Continued preparation for the next zones in Vehicle Maintenance Facility
- **Lookahead** | Further preparations for the next zones in Vehicle Maintenance Facility, and electrical, mechanical and architectural finishes for Parts Storage Building