

Orange Line Transformation

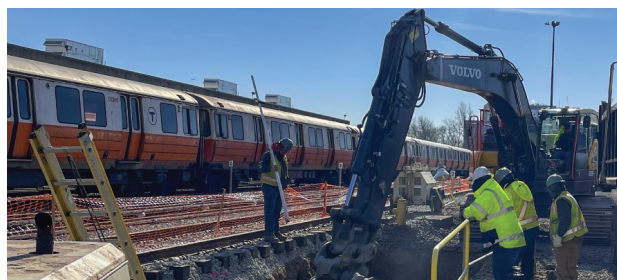
Construction Project Updates



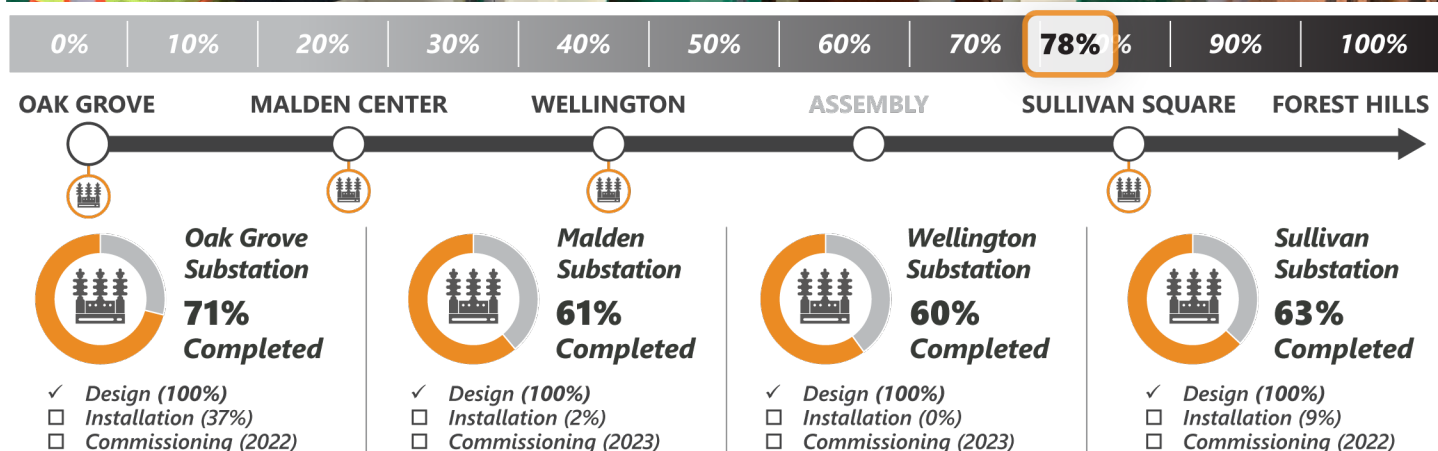
Week in Review and Lookahead

Friday, January 28, 2022

As January comes to a close, work for the Orange Line Transformation (OLT) Program continues to advance. We are **continuing to upgrade the Wellington Yard and Maintenance Facility and the Traction Power Substations.**



Traction Power Substations



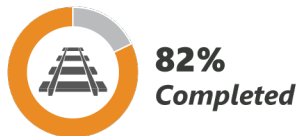
Traction Power Substations: Modernize the third rail power supply to reduce the risk of service disruptions; develop a power system capable of supporting additional Orange Line service

- ✓ **This Week** | Installed DC cables at the Sullivan substation and conducted SCADA programming at the Oak Grove substation
- **Lookahead** | Start SCADA testing at the Oak Grove substation.

Wellington Yard and Maintenance Facility Updates



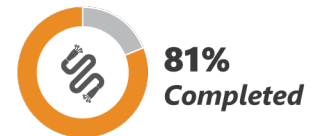
21,895 Feet of Track



69 Units of Special Track



Traction Power & Signals



[Wellington Yard:](#) Upgrade Wellington Yard to increase service capacity, replace outdated infrastructure, and enhance safety.

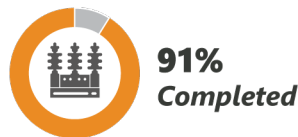
- ✓ **This Week** | Ongoing signal testing and integration in the northern portion of the yard. Commenced demo of track, signal, and traction power infrastructure for the next phase of storage track reconstruction
- **Lookahead** | Continue next phase of storage track, signal, and traction power reconstruction



Building Upgrade



Power Substation



Train Wash



Maintenance Bays



[Wellington Maintenance Facility:](#) Modernize the Vehicle Maintenance Facility to improve vehicle maintenance; reducing customer wait times, provide cleaner cars, and deliver safer operations.

- ✓ **This Week** | Progressed reconstruction of interior maintenance track supporting structures to accommodate new Orange Line vehicles, as well as electrical, plumbing, mechanical, and architectural finishes
- **Lookahead** | Crews will continue to make electrical, plumbing, mechanical, and architectural upgrades to the Vehicle Maintenance Facility, while reconstructing interior maintenance track supporting structures to accommodate new Orange Line vehicles