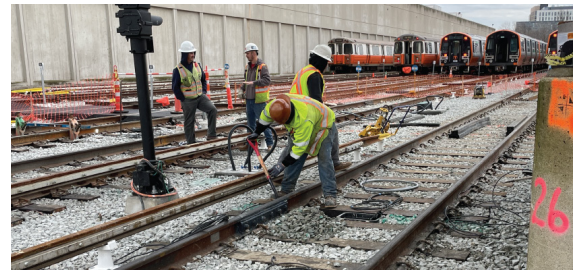


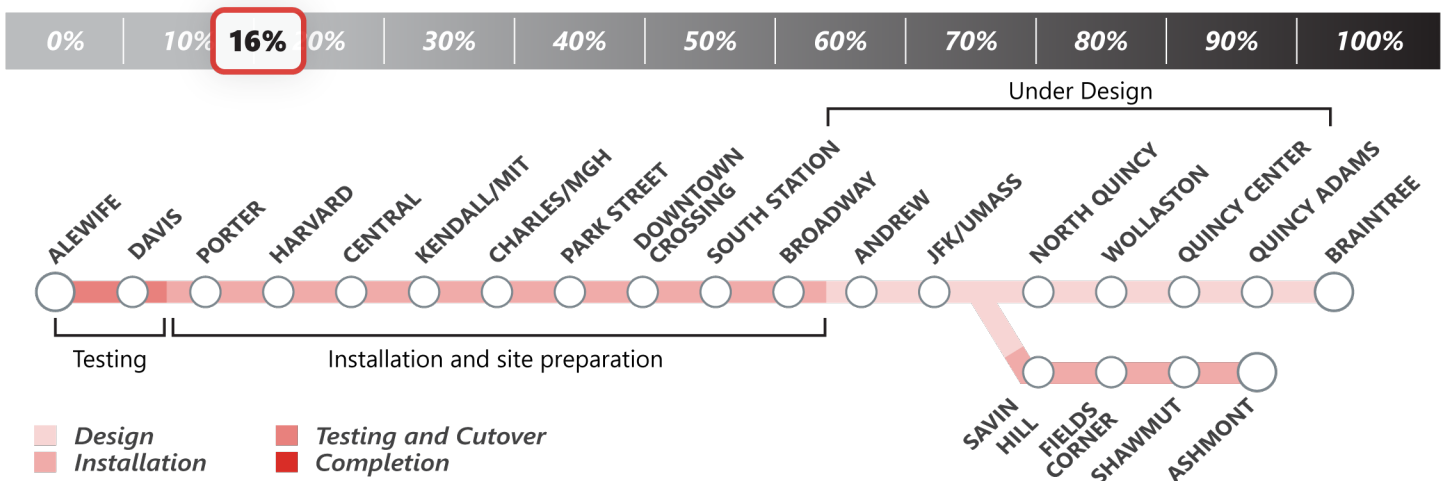
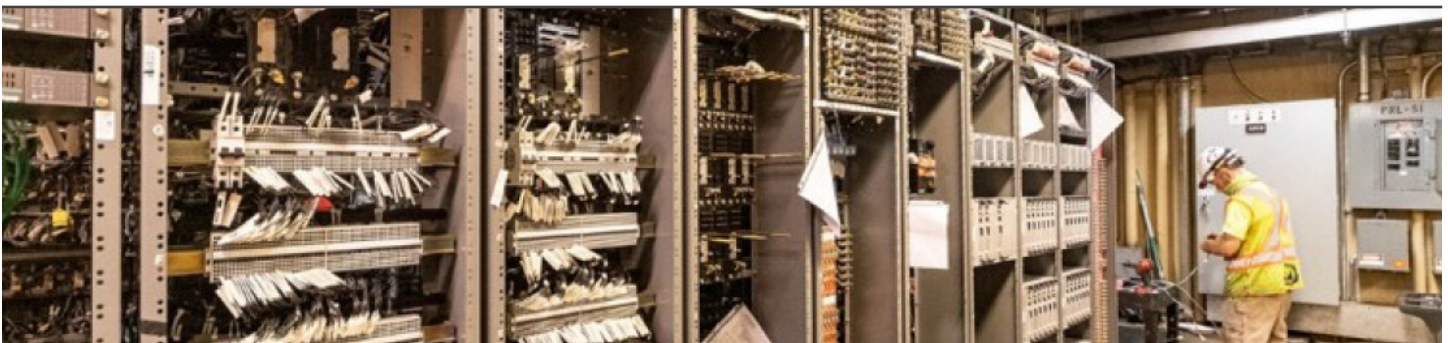
Week in Review and Lookahead

Friday, December 17, 2021

This week, crews continued to make progress on the **Cabot Yard and Vehicle Maintenance Facility** and **Red Line Signal Upgrades** projects. These projects will help deliver new Red Line vehicles and more reliable service for Red Line riders. Stay tuned next week for the release of our 2021 Year in Review to see a recap of everything our team was able to accomplish this year.



Signal Upgrade



[Signal Upgrade](#): Increasing capacity, through reducing headways with modernized signals.

- ✓ **This Week** | Electricians and signals inspectors are performing testing at Alewife and Davis Stations - a necessary step before "cutting over" to the new system next year
- **Lookahead** | Testing will continue. Meanwhile, installers will be replacing signal system components near Harvard Station. The design team will continue with design, factory testing, and procuring of materials for other segments on Red Line

Cabot Yard and Maintenance Facility Updates



32,500 Feet of Track



30% Completed

50 Units of Special Track



30% Completed

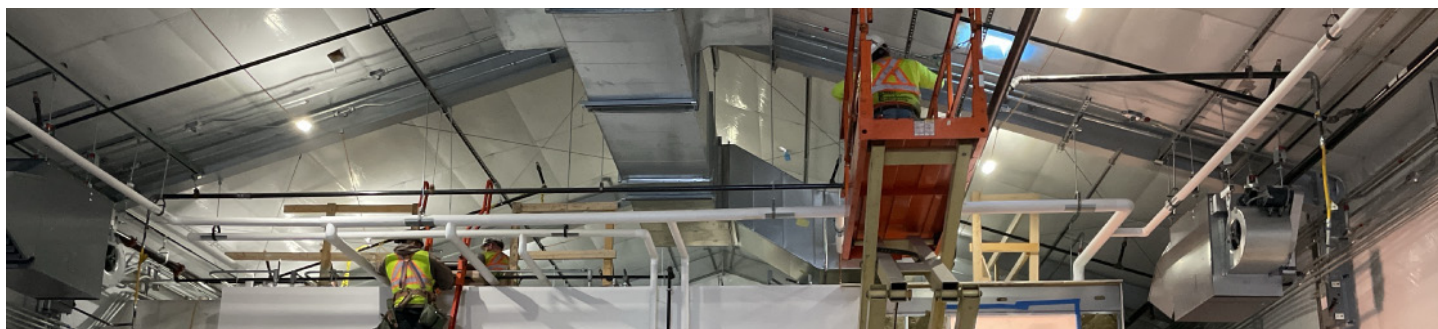
Traction Power & Signals



30% Completed

Cabot Yard: Upgrade the Yard to increase service capacity, replace outdated infrastructure, and enhance safety.

- ✓ **This Week** | Contractors continued reconstruction of drainage system under tracks in the yard (these tracks are used to stable trains). In general, two tracks at a time are being taken out of service for upgrade, allowing the rest of the yard to function normally
- **Lookahead** | Affected tracks will be returned to normal yard operation. The next major outage in the yard will be early January to perform trackwork

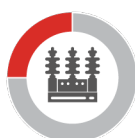


Building Upgrade



30% Completed

Power Substation



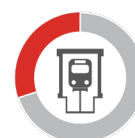
25% Completed

Car Wash



20% Completed

Maintenance Bays



30% Completed

Cabot Maintenance Facility: Modernized the Vehicle Maintenance Facility to improve vehicle maintenance; reducing rider wait times, provide cleaner cars, and deliver safer operations.

- ✓ **This Week** | Electricians and mechanics worked on the Parts Storage Building, including HVAC, electrical, and lighting. Additionally, crews are working on installing an electrical grounding grid at the traction power substation (provides power to trains in the yard)
- **Lookahead** | Crews will focus on roofing repairs to the maintenance facility (pending weather permits safe working conditions)