

Week in Review and Lookahead

Friday, December 10, 2021

This week the completion of the **new Red Line Test Track and Vehicle Testing Facility**.

A new access track was installed with a direct connection to Cabot Yard to allow for vehicle delivery and access to the mainline. With the completion of this project, new Red Line vehicles will be tested and commissioned on an all-new test track.



Red Line Test Track and Facility



0% | 10% | 20% | 30% | 40% | 50% | 60% | 70% | 80% | 90% | **✓ 100%**

Test Track



100% 
Completed

Special Trackwork



100% 
Completed

Test Facility



100% 
Completed

Red Line Test Track: Increase service capacity by providing a dedicated testing and commissioning area for the future red line fleet.

- ✓ **This Week** | The Red Line Test Track and Vehicle Testing Facility was completed (permit issued for occupancy) - this will speed up the testing and commissioning process for the future Red Line fleet after assembly at the Springfield factory

Cabot Yard and Maintenance Facility Updates



32,500 Feet of Track



30%
Completed

50 Units of Special Track



30%
Completed

Traction Power & Signals



30%
Completed

Cabot Yard: Upgrade the Yard to increase service capacity, replace outdated infrastructure, and enhance safety.

- ✓ **This Week** | Track workers focused on replacing segments of rail, wooden ties, and power infrastructure within the yard, to allow continued operations
- **Lookahead** | Contractors will be working on drainage and duct-banks, and return upgraded tracks back to regular operation

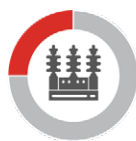


Building Upgrade



30%
Completed

Power Substation



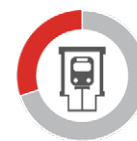
25%
Completed

Car Wash



20%
Completed

Maintenance Bays

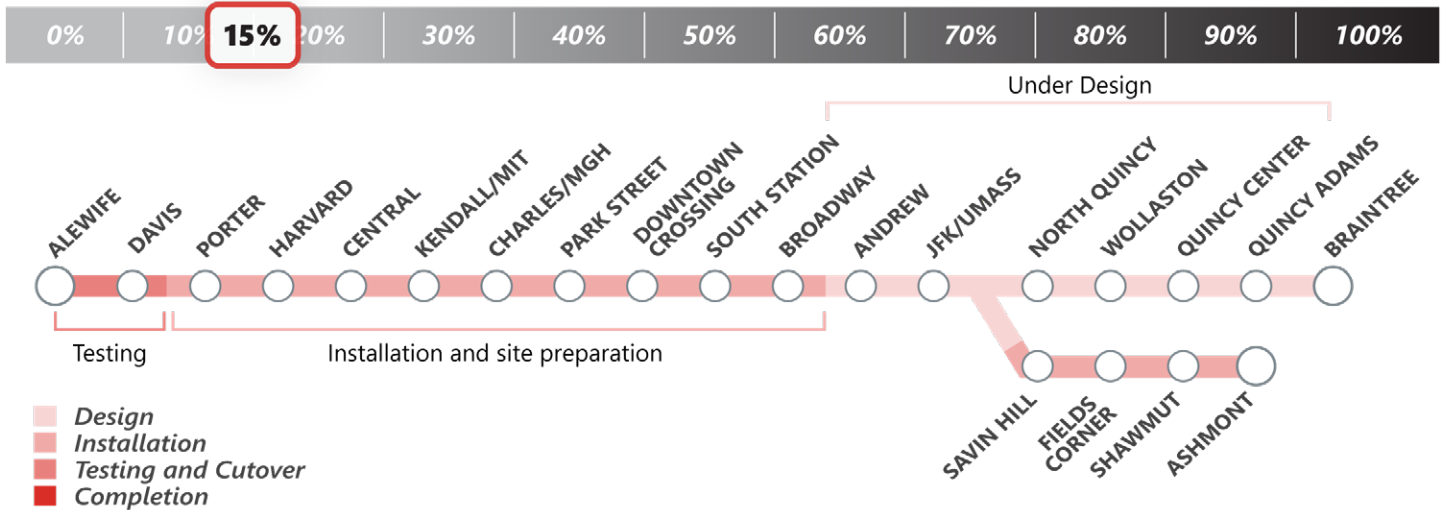
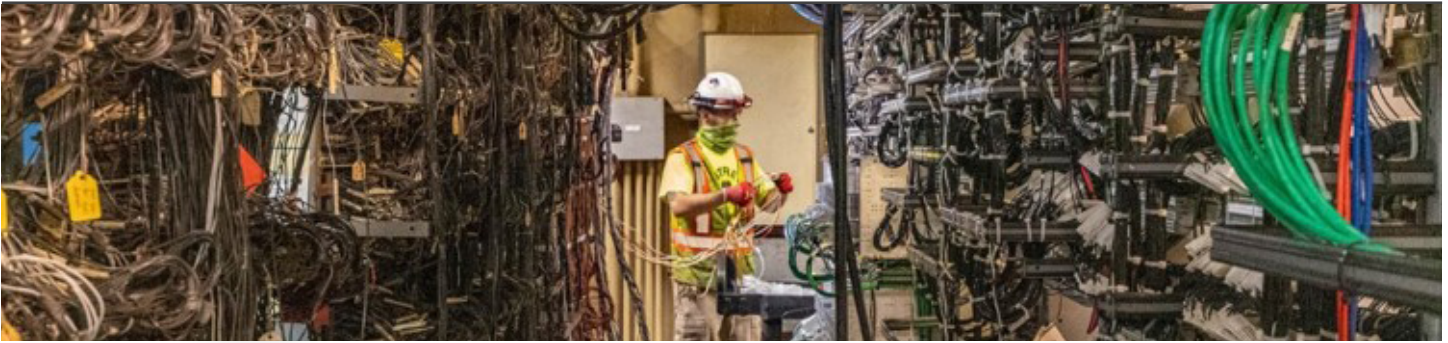


30%
Completed

Cabot Maintenance Facility: Modernized the Vehicle Maintenance Facility to improve vehicle maintenance; reducing rider wait times, provide cleaner cars, and deliver safer operations.

- ✓ **This Week** | At the parts & storage building, mechanics installed heat and air conditioning system. At the power substation (a power source to move trains around the yard), electricians installed a grounding system to protect nearby workers and electrical equipment
- **Lookahead** | Roofing crew will focus on making the roof at the Maintenance Facility watertight for the winter

Signal Upgrade



Signal Upgrade: Increasing capacity, through reducing headways with modernized signals.

- ✓ **This Week** | Crews continue to install new digital infrastructure in the existing signal rooms in the vicinity of Harvard and Central Square. Alewife and Davis areas are almost ready to be converted to the new signaling system
- **Lookahead** | Continue site preparation and installation from Porter past Downtown Crossing. Factory Acceptance Testing for the Ashmont branch equipment