

Orange Line Transformation

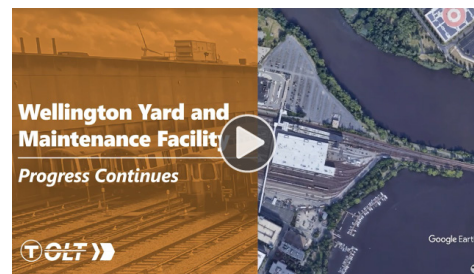
Construction Project Updates



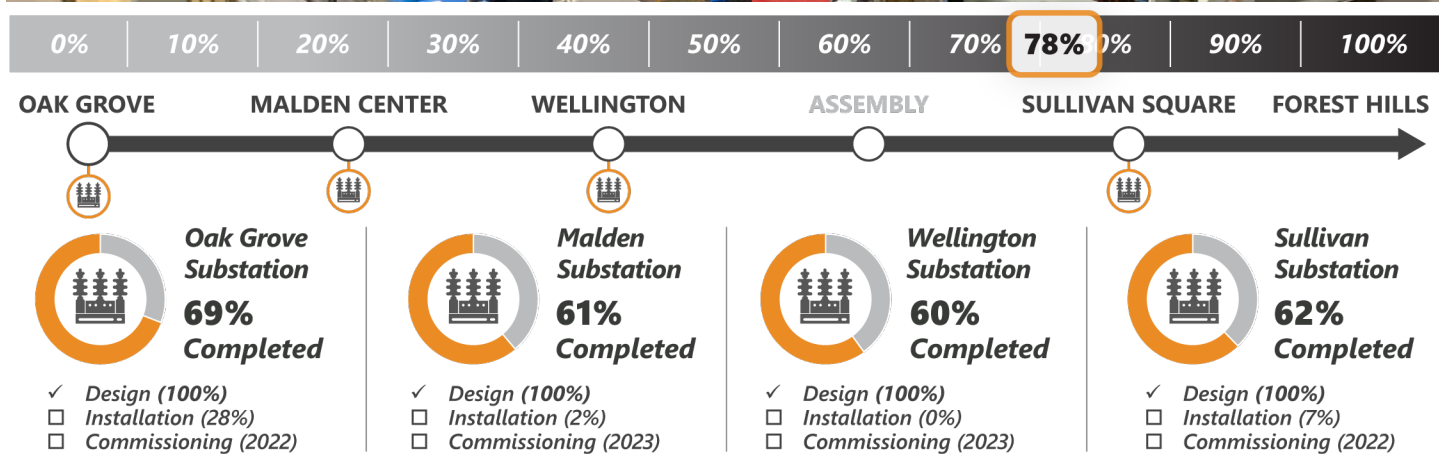
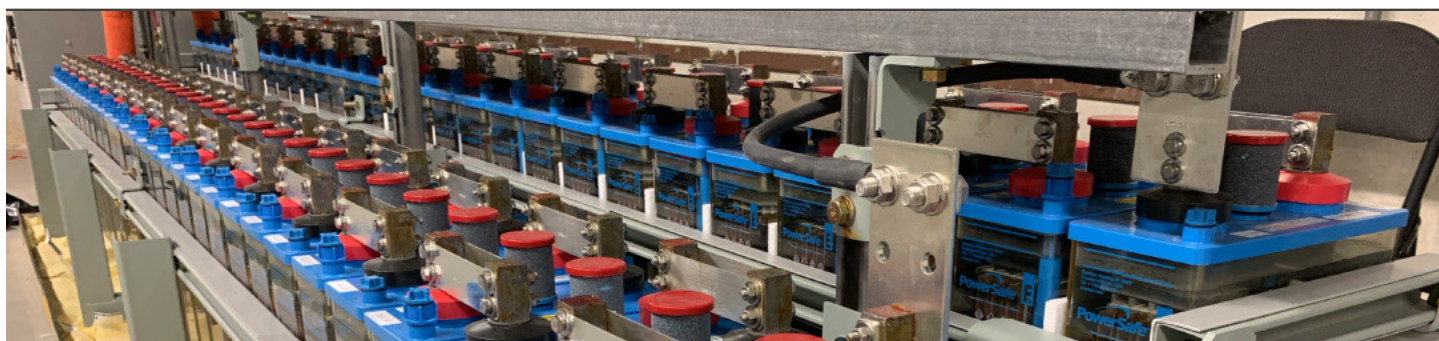
Week in Review and Lookahead

Friday, December 17, 2021

This week Orange Line Transformation crews continued to make progress on the [Wellington Yard and Maintenance Facility](#) and **Traction Power Substations** projects, which will provide improved vehicle maintenance and improved service for MBTA riders. Stay tuned next week for the release of our 2021 Year in Review to see a recap of everything our team was able to accomplish this year.



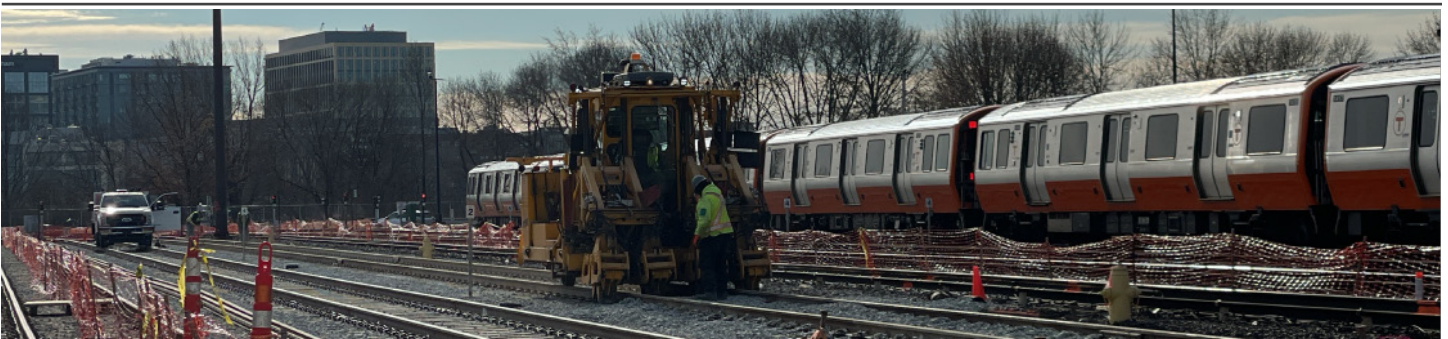
Traction Power Substations



Traction Power Substations: Modernize the third rail power supply to reduce the risk of service disruptions; develop a power system capable of supporting additional Orange Line service

- ✓ **This Week** | Engineers downloaded newly tested software to integrate the new substation with the MBTA's existing communications system – this supports improved remote operation of the substation
- **Lookahead** | Technicians will install a new communications circuit which will allow Engineers to perform live testing of the newly installed software

Wellington Yard and Maintenance Facility Updates



0% | 10% | 20% | 30% | 40% | 50% | 60% | 70% | **81%** | 90% | 100%

21,895 Feet of Track



82%
Completed

69 Units of Special Track



80%
Completed

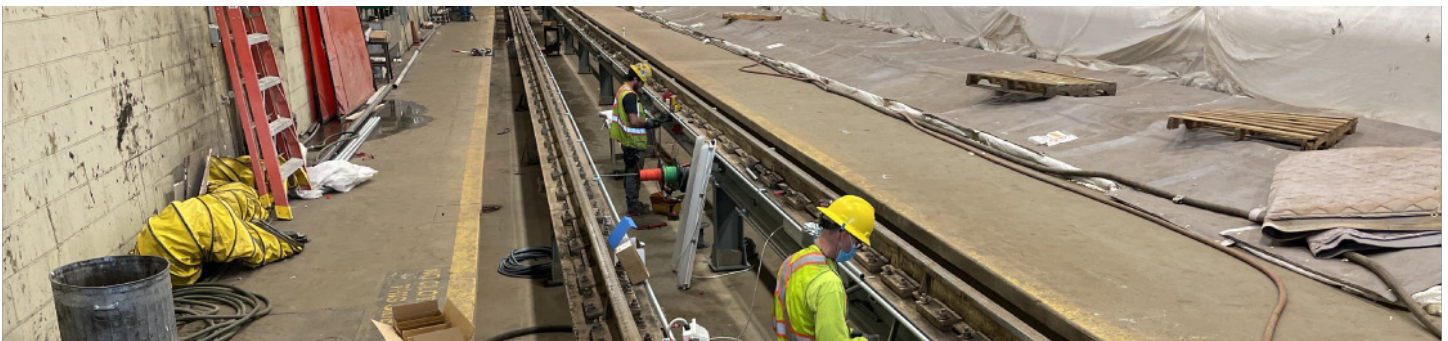
Traction Power & Signals



81%
Completed

[Wellington Yard:](#) Upgrade Wellington Yard to increase service capacity, replace outdated infrastructure, and enhance safety.

- ✓ **This Week** | Trackwork crews continued reconstruction of tracks in the yard (used for vehicle stabling) and special trackwork (used to switch trains from one track to another)
- **Lookahead** | Workers will prepare the track for operation - this includes connecting power to the third rail (to move trains within the yard) and heaters (to prevent ice build up on components). Track to be operational before Christmas



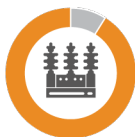
0% | 10% | 20% | 30% | 40% | 50% | 60% | 70% | **82%** | 90% | 100%

Building Upgrade



89%
Completed

Power Substation



91%
Completed

Train Wash



71%
Completed

Maintenance Bays



50%
Completed

[Wellington Maintenance Facility:](#) Modernized the Vehicle Maintenance Facility to improve vehicle maintenance; reducing customer wait times, provide cleaner cars, and deliver safer operations.

- ✓ **This Week** | Electricians installed sections of the new power system which will be used to move trains inside the maintenance building
- **Lookahead** | Crews will continue to install supporting structures in the vehicle maintenance pits which allows mechanics to access the undersides of trains to diagnose issues and make repairs