



**Massachusetts Bay  
Transportation Authority**

# Winchester Center Station Accessibility Improvements

---

Virtual Public Meeting – Preconstruction Project Update

December 15, 2021

Nathan Rae, Sr. Project Manager, MBTA Capital Delivery

# Notification of Recording and Q&A Best Practices

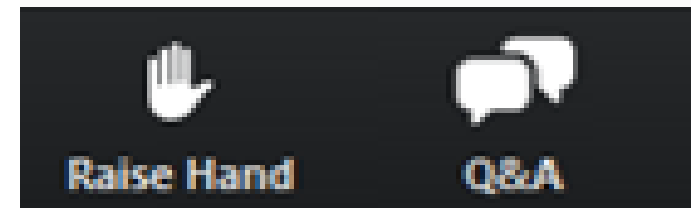
---

## Notification of Recording

- This meeting will be recorded, and the recording and chat transcript are considered a public record
- This meeting recording will be posted on the project website following the conclusion of the meeting

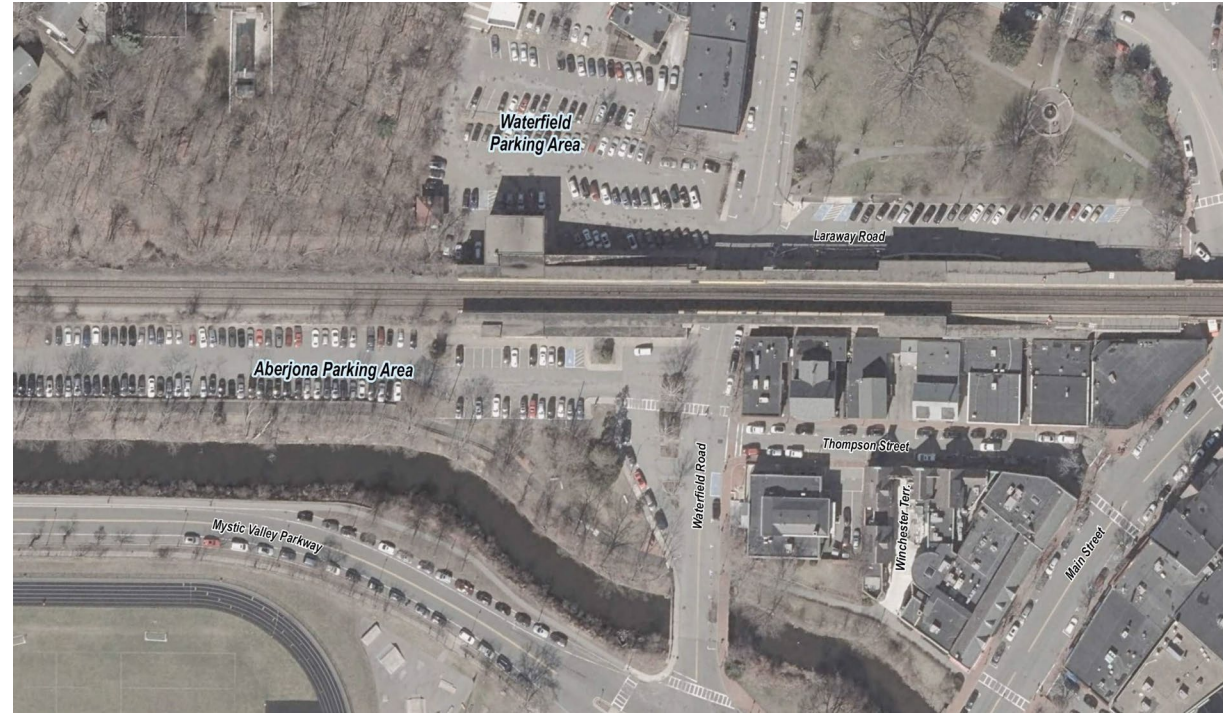
## Q&A after the Presentation

- Please share only one question or comment at a time
- Use the **Q&A** button at the bottom of your screen to submit a typed question or comment
- Press the **RAISE HAND** button to share your question or comment verbally. Wait for the moderator to recognize you and unmute you before speaking



# Agenda

- Project Overview
- Existing Conditions
- Future Station Renderings
- What to Expect During Construction
  - Project Schedule
  - Transit Alternatives
  - Parking & Traffic Impacts
- Questions/Comments



# Project Overview

- Full Station Reconstruction:
  - Install new elevators and stairs
  - Install fully accessible, high-level side platforms
  - Covered stairwells and upgrade sidewalk
  - New emergency lighting and security cameras
  - Updated station and wayfinding signage
- Total Estimated Construction Cost: \$48 Million





# Existing Conditions



- Station does not meet current MBTA Commuter Rail Design, ADA, or MAAB standards/requirements for accessibility
- Station closed to passengers in January 2021
- Demolition of station ramps, platforms and canopies was completed in June 2021





# Future Station Rendering

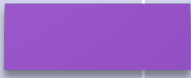







# Another Future Station Rendering



# Anticipated Construction Schedule

	Fall/Winter 2021	Spring/Summer 2022	Fall/Winter 2022	Spring/Summer 2023	Fall/Winter 2023	Spring 2024
Phase 1 – Preconstruction Activities						
Phase 2 – Construction						
Phase 3 – Demobilization						
Phase 4 – Station Reopen						

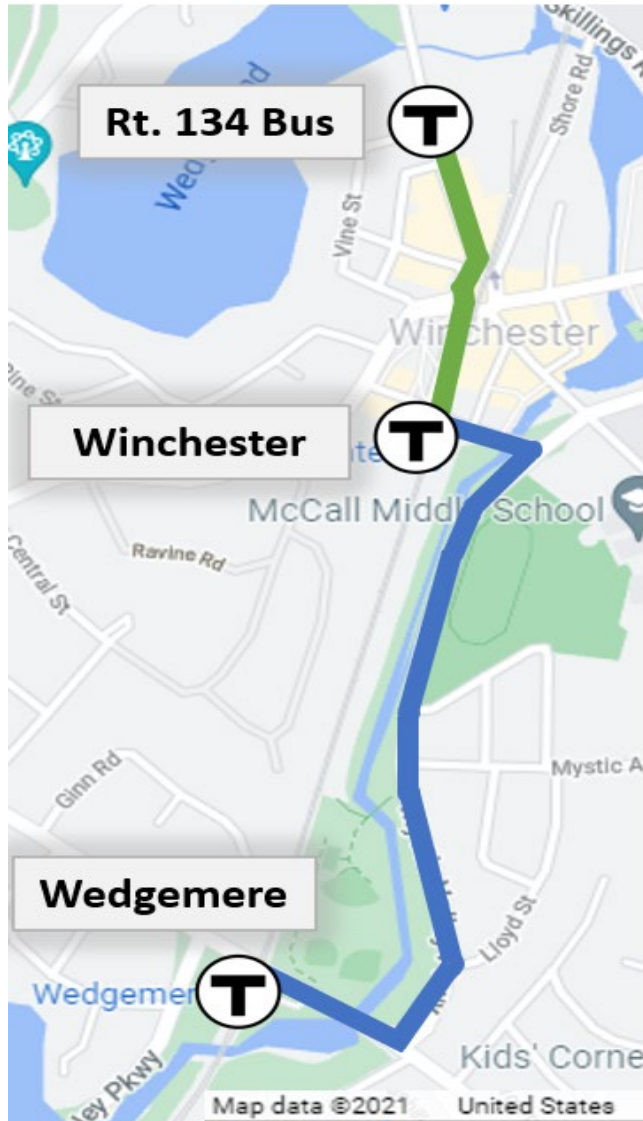


# Construction Phase 1: What To Expect

- Pre-Construction Assessments
- Preparing site for construction:
  - Fencing installation
  - Vibration monitoring
  - Environmental controls
- Construction equipment to be moved on site
- Field Personnel On Site
  - MBTA Field Staff (Resident Engineer and Field Inspectors)



# Transit Alternatives



## Route 134 Bus

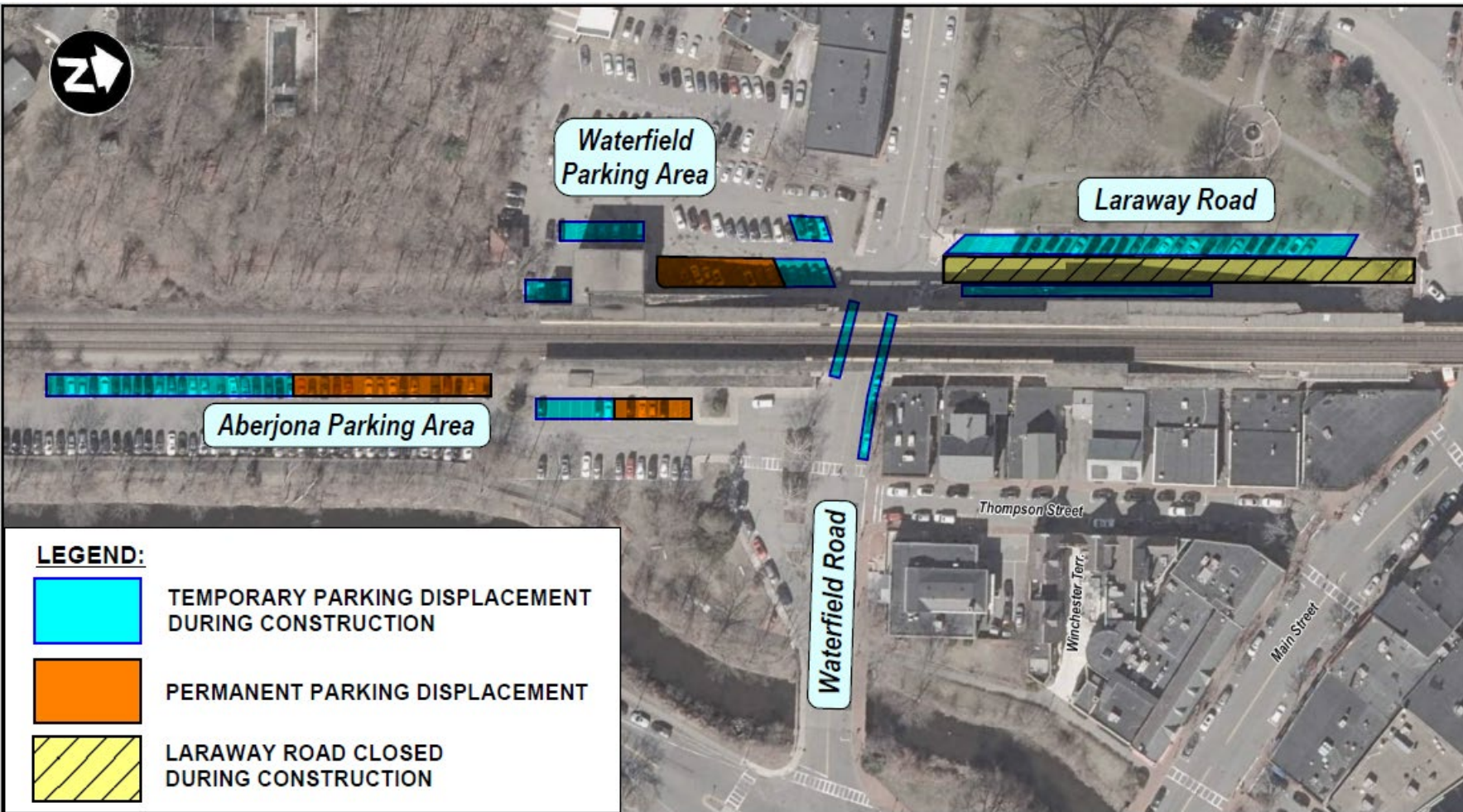
- Route 134 Bus to Orange Line (Wellington)
- 0.2 Miles (about a 4-minute walk) from station, shown in green
- Corner of Main Street & Vine

## Wedgemere Station

- 0.7 Miles (about a 3-minute drive) south from Winchester Center, shown in blue
- Walk/bike/drop-off at Wedgemere Station
- Additional bike storage



# Parking & Traffic Impacts



- Parking impacts to begin early 2022
- Laraway Road to remain closed for project duration
- Portions of Waterfield Parking Area and Aberjona Parking area unavailable during construction
- Occasional parking & traffic impacts at Waterfield Road
- Construction advisories will be issued ahead of road closures or construction impacts
- Police details will be on site for any traffic impacts

# Public Outreach

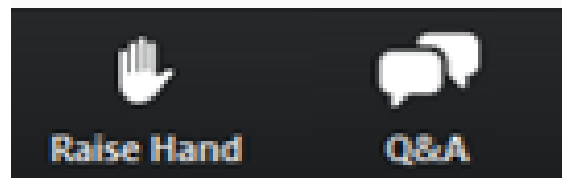
- Project email address:  
[winchesterstation@MBTA.com](mailto:winchesterstation@MBTA.com)
- Construction hotline: (781) 218-9717  
For construction-related concerns and questions.
- Project website:  
[www.mbta.com/winchesterstation](http://www.mbta.com/winchesterstation)





# Questions & Answers

- Please share only one question or comment at a time.
- To ask a question via phone, dial \*9 and the moderator will call out the last 4 digits of your phone number and unmute your audio when it is your turn.
- Use the “Q&A” button to submit a typed question or comment.
- Press the “Raise Hand” button to share your question or comment verbally.
  - After you raise your hand, wait for the moderator to recognize and unmute you before speaking.
  - After you share your question or comment, we will lower your hand and you will be muted to allow the team to respond and provide opportunities for others to participate.



You may also submit your questions or comments if we run out of time, after the meeting, to the project email address: [WinchesterStation@mbta.com](mailto:WinchesterStation@mbta.com) or visit [www.mbta.com/WinchesterStation](http://www.mbta.com/WinchesterStation) for more information.

