



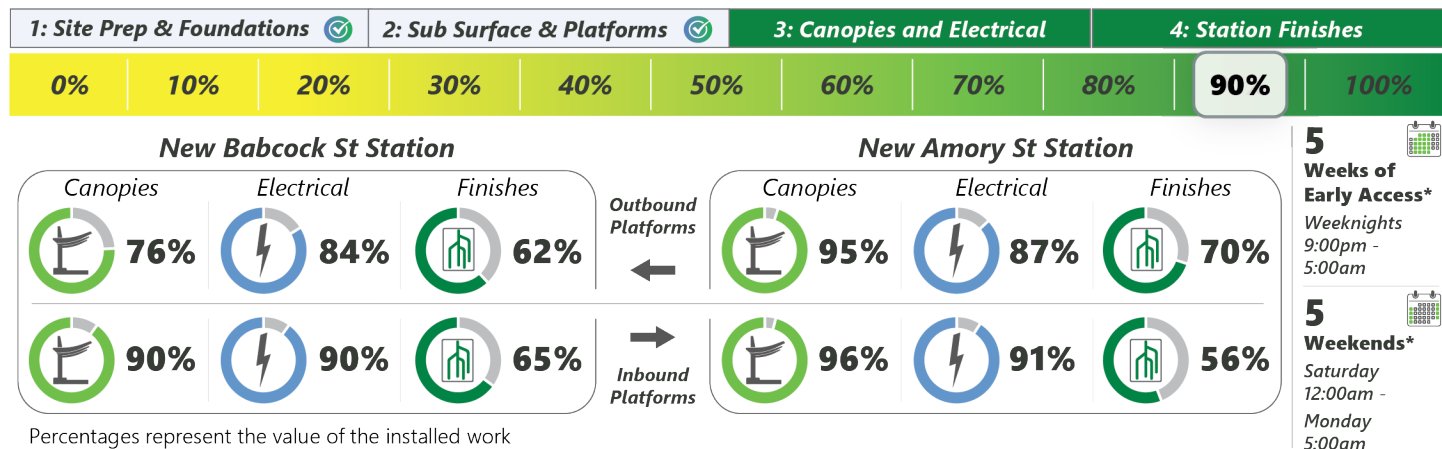
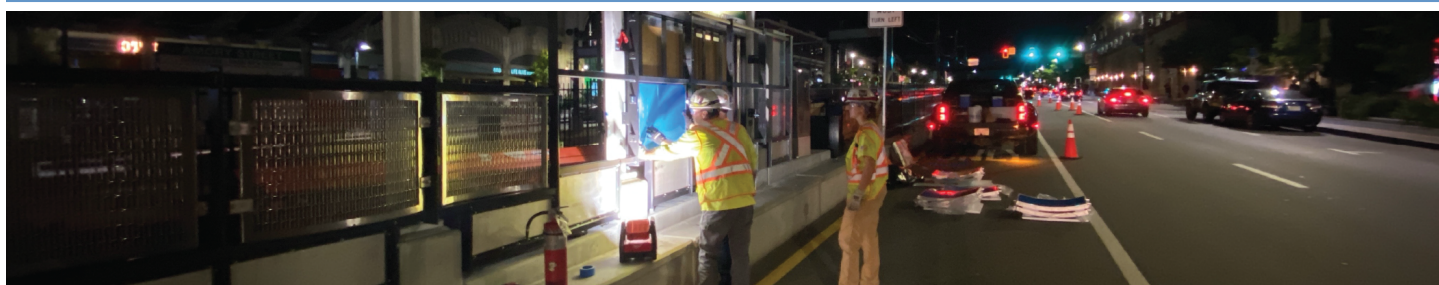
Week in Review and Lookahead

Friday, October 1, 2021

Over the past week, signal testing for the **D Branch Track and Signal Replacement** project has continued to progress. **B Branch Station Consolidation** work advanced, with more station elements installed at the new Babcock Street and Amory Street stations. **Lechmere Viaduct Rehabilitation** continued with concrete repairs, and the dismantling of scaffolding, materials, and temporary offices around the work site. This weekend we're adjusting our construction schedule on the B Branch Station Consolidation project to accommodate the BU class of 2020 commencement – congratulations to the graduates and their families!



B Branch Station Consolidation



B Branch Station Consolidation Project: Consolidate four (4) existing Green Line stations on the B Branch along Commonwealth Avenue adjacent to Boston University, into two (2), fully accessible, brand new stations (Babcock & Amory).

- ✓ **Last Week** | Crews continued installing roofing, electrical work, signs and sign panels, and site finishes at Babcock Street and Amory Street stations
- **Lookahead** | Continue with roofing installation, concrete sealing and anti-graffiti treatment, electrical work and installation of sign and screen frames and mesh and sign panels

*Schedule subject to change with weather conditions and in accordance with public health directives

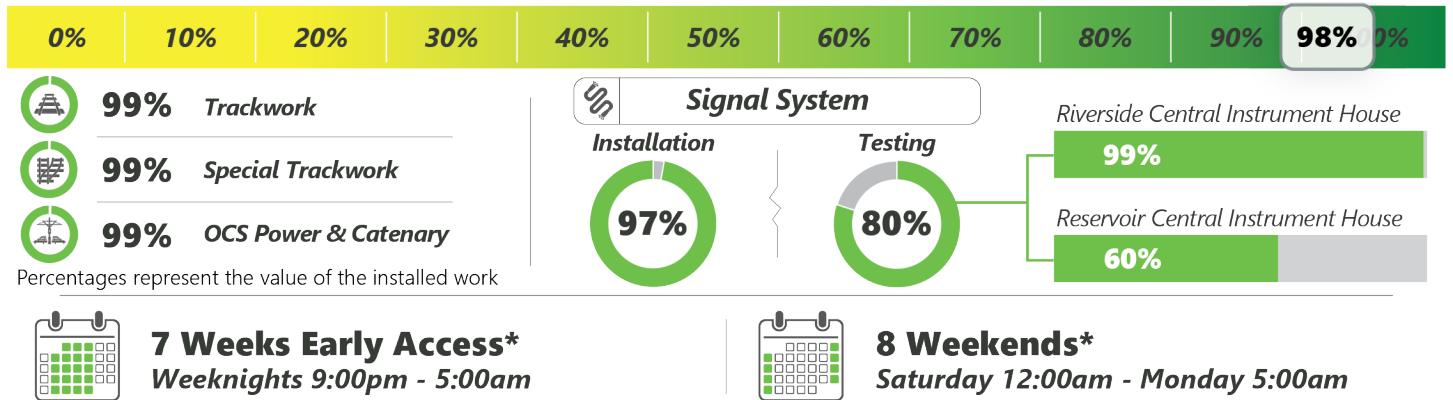


11 Emails Received
GLT@mbta.com



0 Noise Hotline Calls
617-222-4100

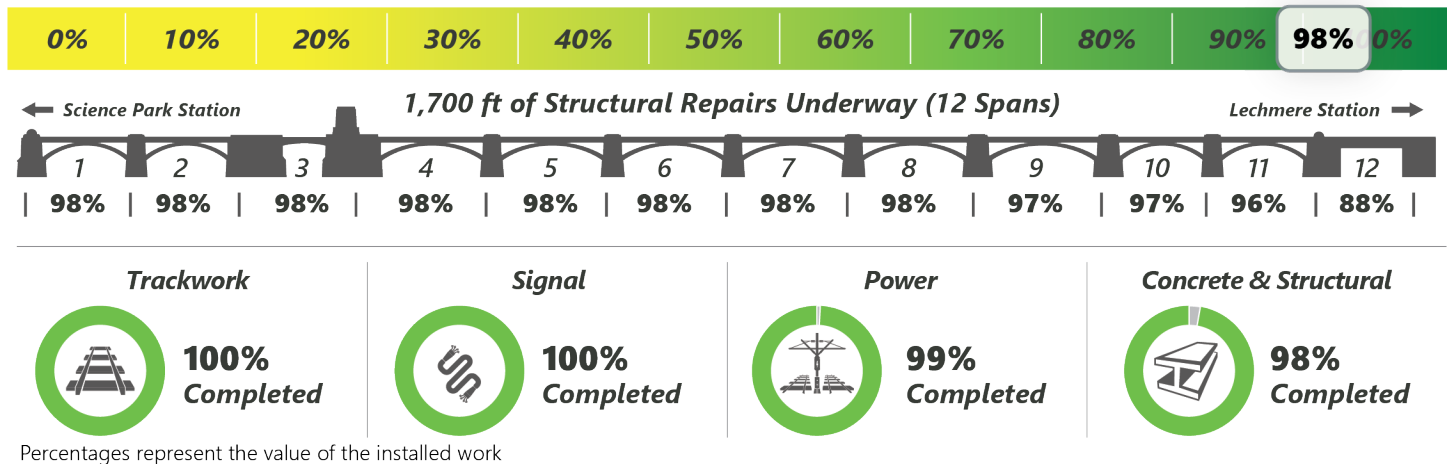
D Branch Track and Signal Replacement



D Branch Track and Signal Replacement Project: Upgrade 25,000 feet of track and reconstruct 7 miles of signal system (Beaconsfield to Riverside).

- ✓ **Last Week** | Continued signal installation and testing from Reservoir to Riverside
- **Lookahead** | Continue D Branch work area cleanup, and signal installation and testing Reservoir to Riverside

Lechmere Viaduct Rehabilitation Project



Lechmere Viaduct Rehabilitation Project: Strengthen and preserve the 110-year-old viaduct for heavier loads and increased train frequency.

- ✓ **Last Week** | Continued concrete repairs, epoxy crack injection, carbon fiber wrap of concrete arches, and electrical and track punch list items
- **Lookahead** | Continue epoxy crack injection, concrete repairs, carbon fiber wrap of concrete arches, and removal of temporary access walkways and shielding beneath spans. Complete traction power installation

*Schedules subject to change with weather conditions and in accordance with public health directives