



Week in Review and Lookahead

Friday, September 24, 2021

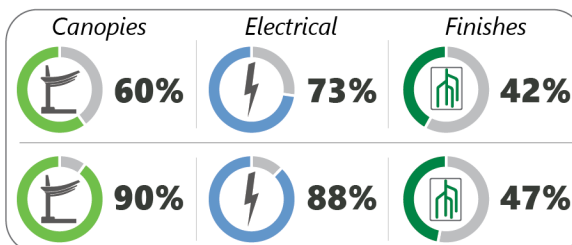
In the past year we've made tremendous progress on projects across the Green Line, but we know that construction may often be disruptive to some riders. **B Branch Station Consolidation** work has continued to advance the new Amory Street and Babcock Street Station. D Branch Track and Signal Replacement Project has allowed us to install new tracks and eliminate slow zones, **so we can get riders where they're going faster.**



B Branch Station Consolidation



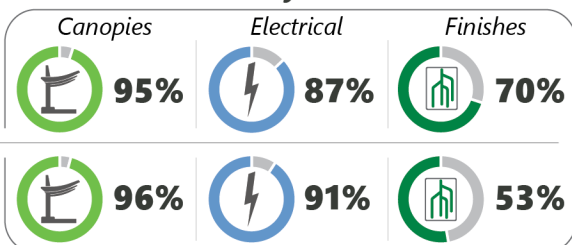
New Babcock St Station



Outbound Platforms

Inbound Platforms

New Amory St Station



5 Weeks of Early Access*
Weeknights
9:00pm - 5:00am

5 Weekends*
Saturday
12:00am -
Monday
5:00am

Percentages represent the value of the installed work

B Branch Station Consolidation Project: Consolidate four (4) existing Green Line stations on the B Branch along Commonwealth Avenue adjacent to Boston University, into two (2), fully accessible, brand new stations (Babcock & Amory).

- ✓ **Last Week** | Crews continued installing roofing, electrical work, signs and sign panels, and site finishes at Babcock Street and Amory Street stations
- **Lookahead** | Crews will continue with roofing installation, concrete sealing and anti-graffiti treatment, electrical work, sign frames, and mesh and sign panels

*Schedule subject to change with weather conditions and in accordance with public health directives

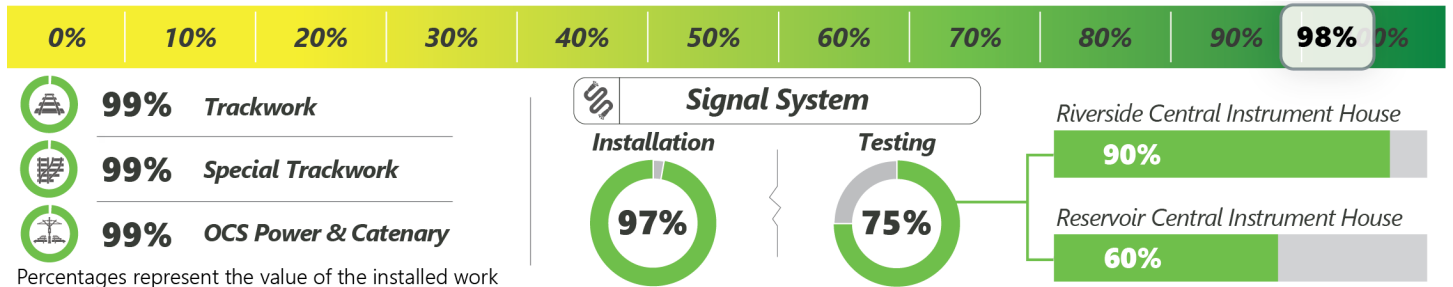
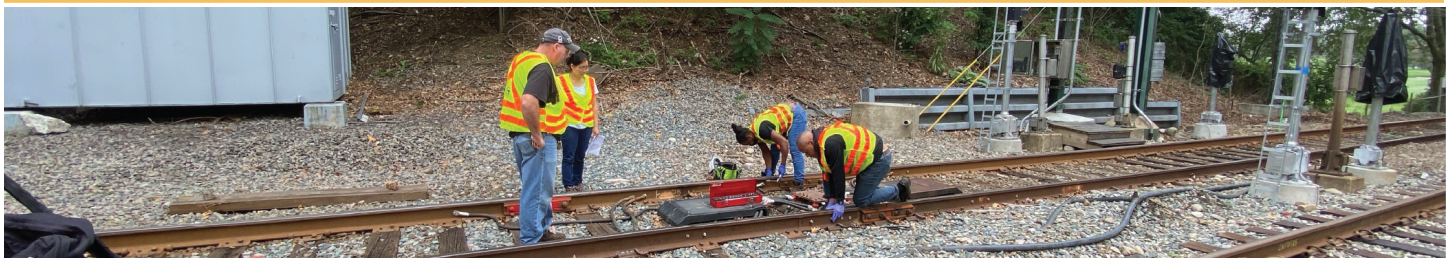


15 Emails Received
GLT@mbta.com



4 Noise Hotline Calls
617-222-4100

D Branch Track and Signal Replacement



7 Weeks Early Access*
Weeknights 9:00pm - 5:00am

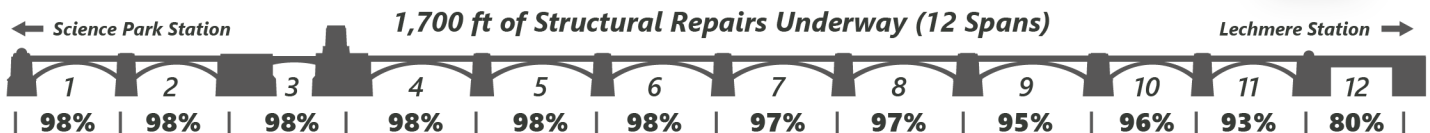
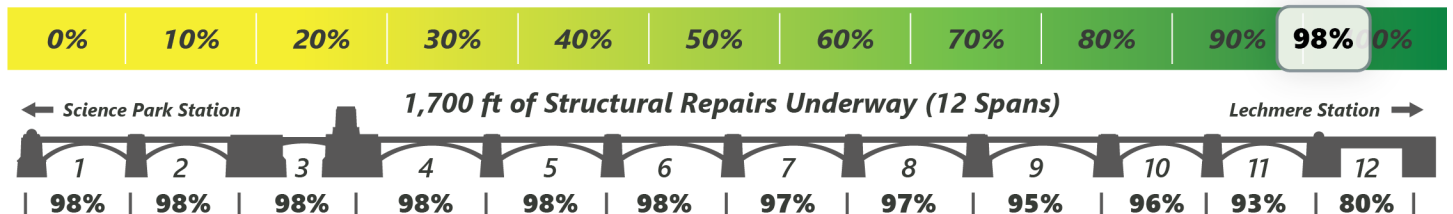


8 Weekends*
Saturday 12:00am - Monday 5:00am

D Branch Track and Signal Replacement Project: Upgrade 25,000 feet of track and reconstruct 7 miles of signal system (Beaconsfield to Riverside).

- ✓ **Last Week** | Workers completed thermite welds on trackwork in the Newton Highlands area (all contract trackwork complete), and continued signal installation and testing between Reservoir and Riverside
- **Lookahead** | Crews will continue cleanup along the D Branch work area, as well as signal installation and testing between Reservoir and Riverside. Major cutover of signals at Riverside Central Instrument House will enable commissioning of new signal system from Riverside to Eliot

Lechmere Viaduct Rehabilitation Project



Percentages represent the value of the installed work

Lechmere Viaduct Rehabilitation Project: Strengthen and preserve the 110-year-old viaduct for heavier loads and increased train frequency.

- ✓ **Last Week** | Crews continued grout injection, concrete repairs and joint sealing, installation of carbon fiber wrapping, and demobilized span shielding
- **Lookahead** | Crews will continue with punch list work, installation of carbon fiber wrapping, grout injection, concrete repairs and joint sealing, and demobilization of safe spans

*Schedules subject to change with weather conditions and in accordance with public health directives