



www.mass.gov/southcoastrail

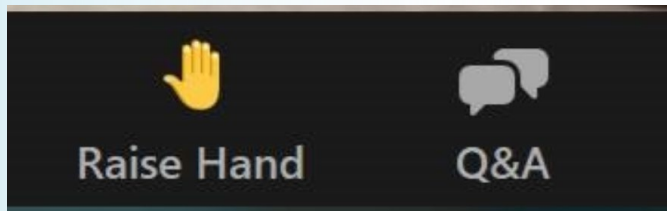


South Coast Rail - Phase 1 Fall River Community Meeting

February 25, 2021

Q+A after the Presentation

- Please share only one question or comment at a time.
- Use the **Q&A** button to submit a typed question or comment.
- Press the **RAISE HAND** button to share your question or comment verbally. Wait for the moderator to recognize you and unmute you before speaking.
- Attendees who speak Spanish or Portuguese must raise their hands to provide comments or questions verbally for the interpreters to hear you.



*Tech issues?
Call 508-443-4045*

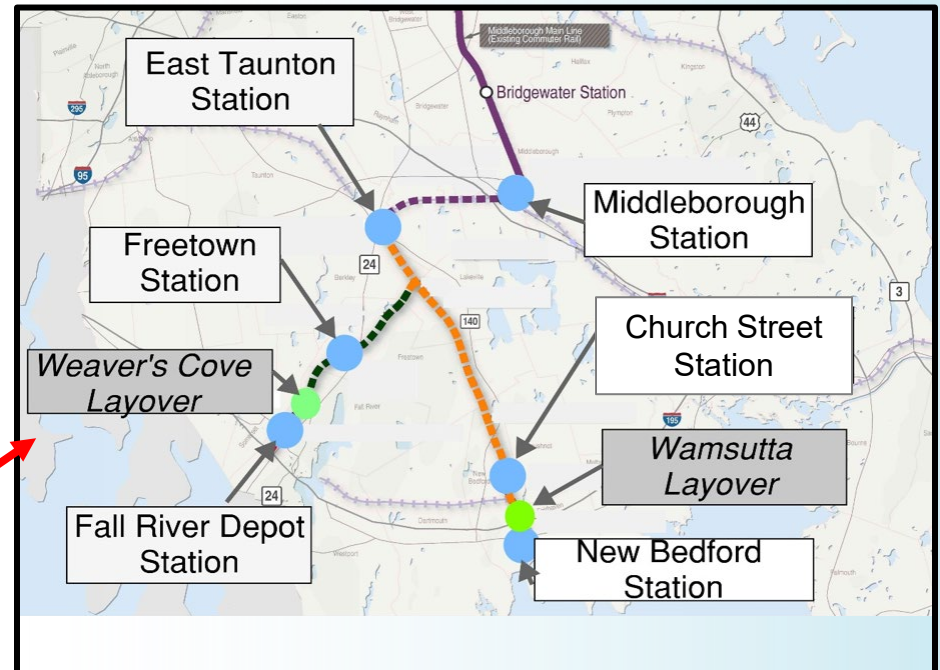
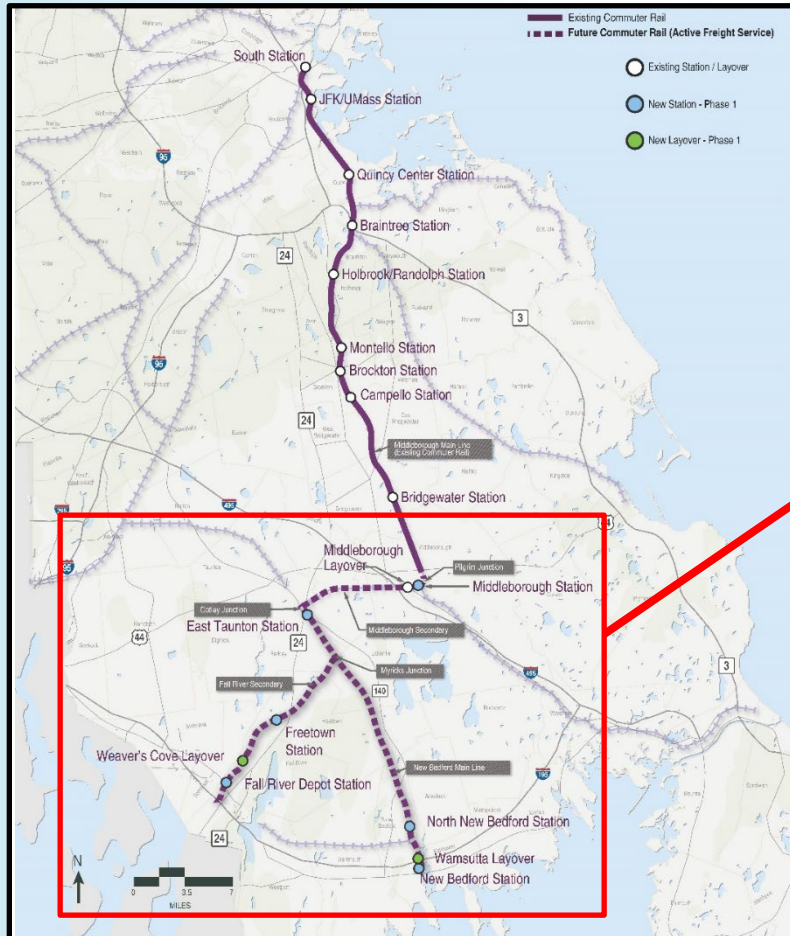
*If you are joining via phone only, you may press *9 to raise your hand.*

Overview

- Phase 1 service is planned for the end of 2023 and fully funded in the Capital Investment Plan
- The MBTA awarded the **Fall River Secondary** construction package to Skanska/DW White JV for \$159M
- The MBTA awarded the Middleborough Secondary/New Bedford Main Line and Systems construction contract to SCR Constructors (Middlesex/Tutor Perini) for \$403.5 million
- Construction is underway on both lines
- Early action work is complete to prepare the right-of-way and replace 4 railroad bridges



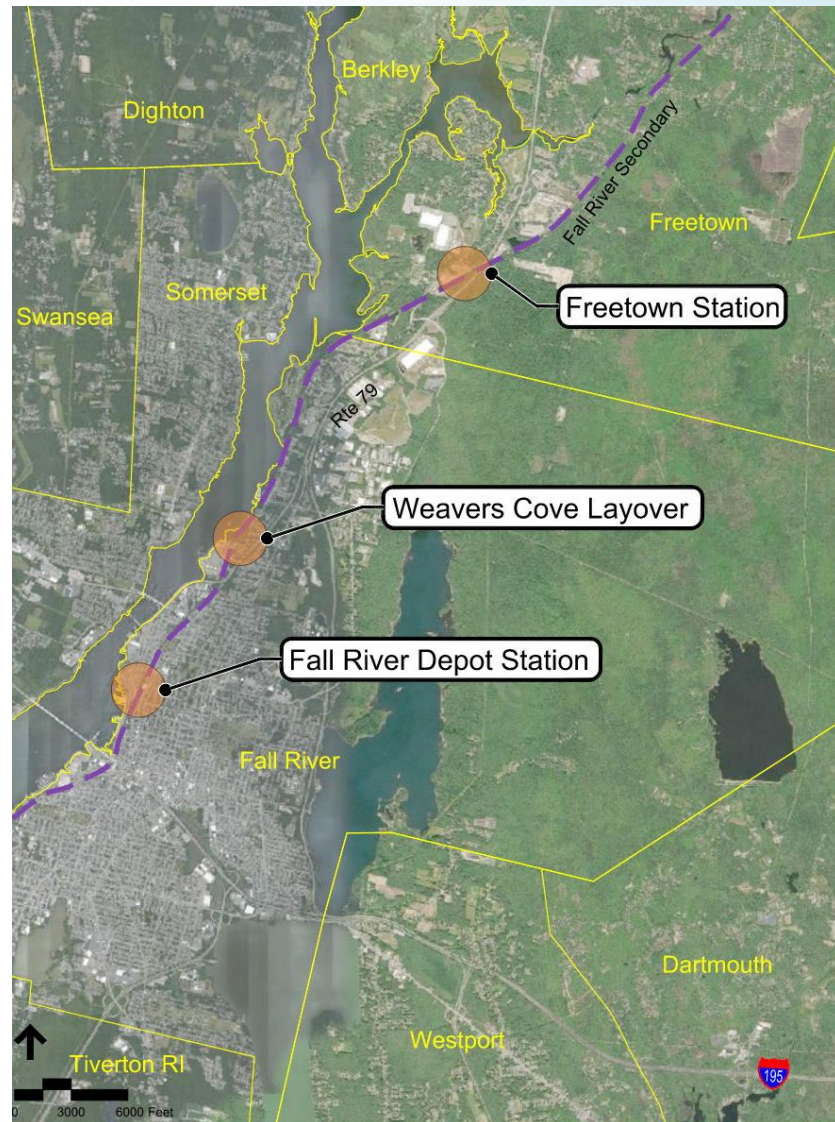
Phase 1 Stations and Layovers



Stations and Layover Locations

Weaver's Cove Layover and Fall River Depot Station are 1.5 miles apart.

Freetown Station and Fall River Depot Station are 5.7 miles apart.



Farm Road bridges

Collins St bridge

Ashley St bridge

Weaver's Cove Layover Facility

St and Fall depot

bridge

Fall River Country Club

St Patrick's Cemetery

Bristol Community College

Waputta Pond

Google

What's included in the Fall River Secondary

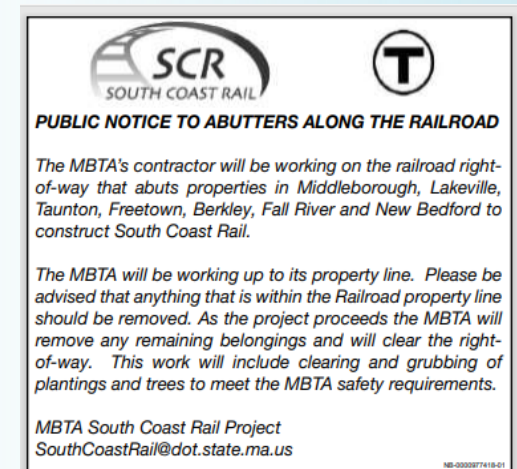
- 12.1 miles of track
- 2 new stations:
Freetown and Fall River
- 1 layover, Weaver's Cove
- 10 grade crossings
- 8 bridges
- 10 culverts



Freetown Station rendering

Construction Start-up: Notices and Information

- Survey work along the right-of-way is ongoing
- Encroachments identified on MBTA property for removal – such as fences, dumpsters, driveways, landscaping and sheds
- Notices sent to abutters along the Right-of-Way
- Ads published in Fall River Herald, New Bedford Standard Times and Taunton Gazette
- SCR team members available for questions and onsite visits
- Monthly meetings with city departments



What to Know about Construction

- Typical hours of construction: 7am – 7pm
- Construction pest and rodent management is required and ongoing
- All contractors and site personnel are complying with health and safety regulations regarding COVID-19
- Dust control and management are required and monitored

Construction at the Station and Layover

- At **Weaver's Cove**: earthwork, utility work and installation of water, sewer and drainage piping
- At **Fall River Depot**: installing micropiles for the station foundation (at right) and building a stormwater detention tank



*Fall River Depot
stormwater detention
tank*



*Fall River Depot –
micropiles installed for
station support*



Marine sheet piles being installed (above) and in place (top right)



*Hydrant installation at
Weaver's Cove*

Fall River Area Ongoing Construction



*Top – clearing and grubbing along
the right-of-way*

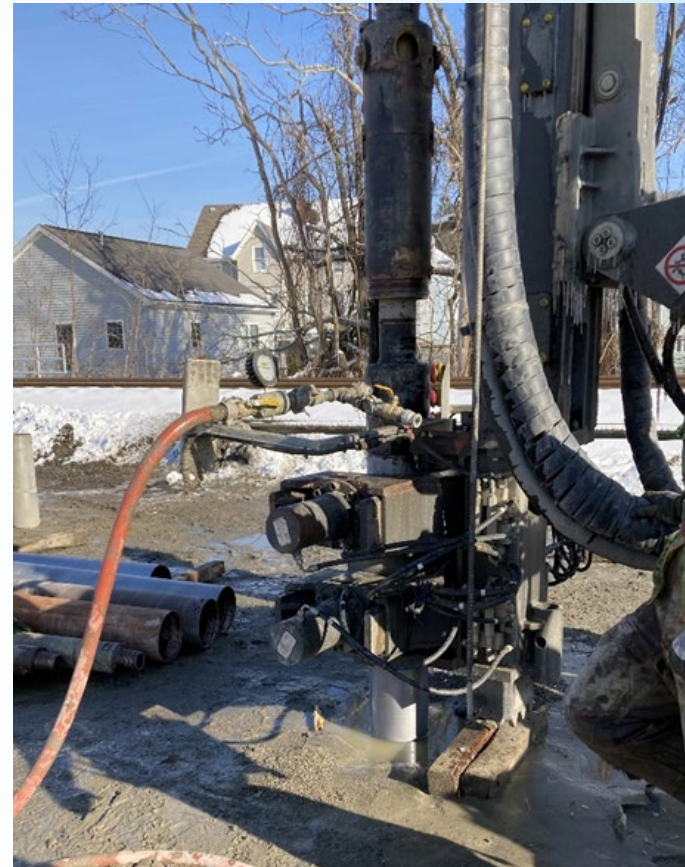
*Right – 80-foot lengths of rail at
Campanelli Yard*



ROW and Station Work



*Installing sheet piles (above);
installing platform micropiles for the
station (right)*



Construction Photos



Installing erosion protection



Offloading 1600-foot rails

Traffic Impacts during Construction – Year 1

- Short-term traffic impacts and lane shifts can be expected over the next year at the following locations:
 - Pearce Street
 - Fall River Depot and Weaver's Cove
 - Farm Road Bridge via Horizon Way
- Reconstruction of the Pearce St., Turner St. and Collins St. bridges may require road closures and detours
- The above traffic management plans will be coordinated with the city prior to implementation
- In addition, construction access roads used during construction to enter the right-of-way will include:
 - Terry Lane
 - Cory Street
 - Alton Street

What's Coming: Next 8 Weeks

- **Weaver's Cove**
 - Install underground drainage structures: pipes and manhole
 - Relocate overhead power poles and lines
- **Fall River Depot**
 - Install micropiles and pile caps
- **Freetown Station**
 - Install drilled piles
- **Right-of-Way**
 - Construct retaining walls adjacent to track right of way
 - Install sheet piles and drilled piles
- **Various locations**
 - Continue tree clearing and grubbing
 - Install erosion controls

Fall River Depot Station

- Located at Route 79 and Davol Street in the vicinity of the historic Fall River Station
- 730-foot high level side platform with 2 canopies between Turner Street and Pearce Street
- Parking: 220 vehicular spaces, 22 bicycle spaces, accessible parking, and EV charging spaces
- Accessible drop-off/pick-up location
- Bus drop off on North Main Street
- Other features include covered benches, fare validators, trash and recycling and storage and utilities

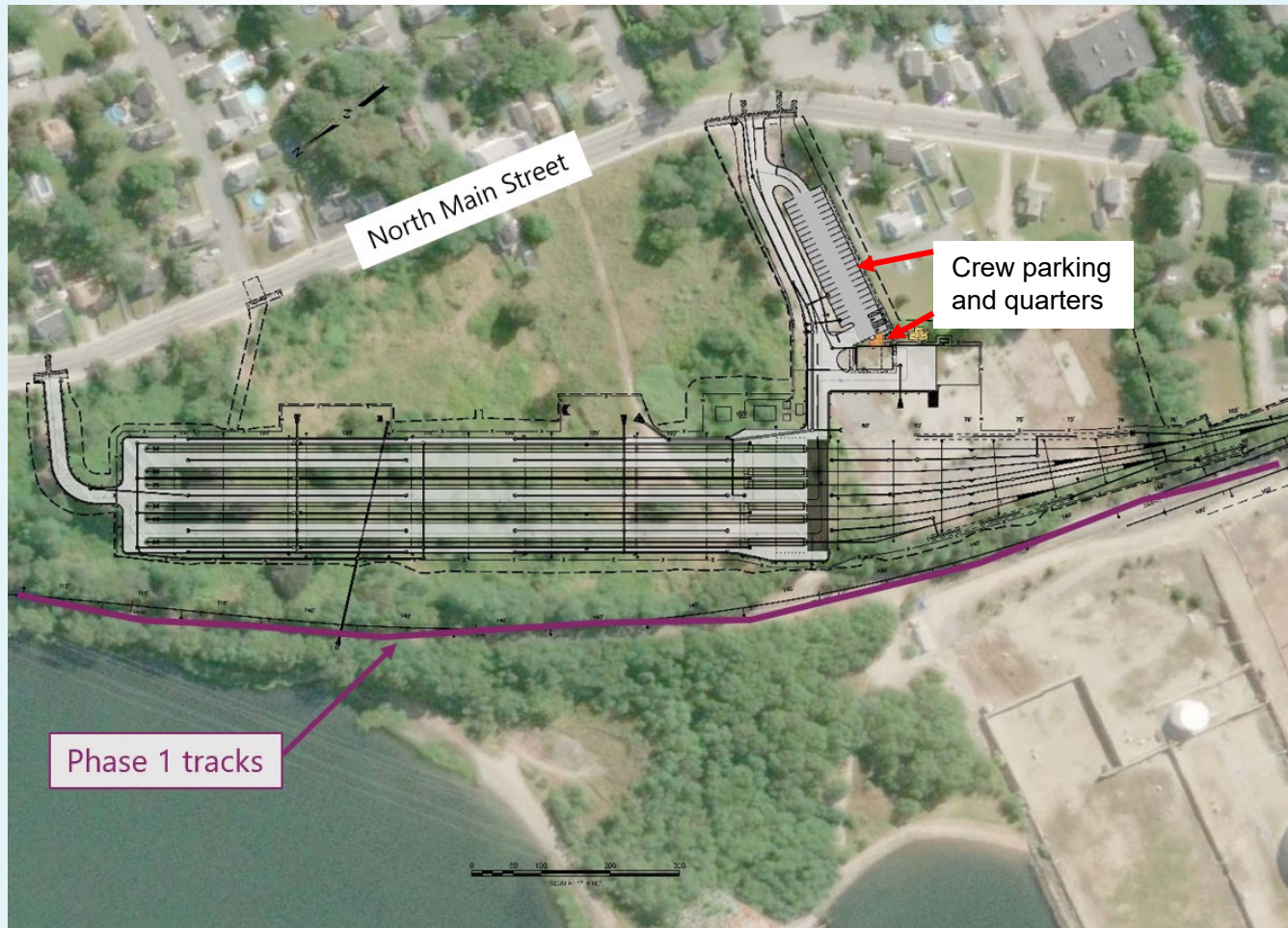
Fall River Depot Station



Station Layout



Weaver's Cove Layover Facility



Layover Details

- Located at 2680 North Main Street, next to the Fall River Secondary, the main line serving Fall River
- Will store trains overnight between the last trip at the end of each night and the first trip the following day
- Trains are cleaned, fueled and light maintenance is done on site (no major maintenance)
- Crew quarters and parking; no neighborhood parking
- Fenced and secured property, with a locked emergency exit

Rendering of on-site crew quarters



Layover Operations

- The diesel trains will start and end daily service at the layover facility, so there will be locomotive engine noise when they depart and arrive
- No horns are required unless there is work or workers on the tracks
- While only light maintenance will occur at the facility, there could be some residual noise from these activities
- When trains arrive at the end of the day, the engines are fully turned off or plugged into a 480kv power source to keep the engines warm during the winter months

Dust Control at Weaver's Cove

- Employing water trucks throughout all work areas
- Applying hydroseed and stabilizer to stockpiles of loam (recently completed)
- Compacting and smooth-rolling earthwork surfaces
- Maintaining perimeter erosion controls (e.g., silt fences, hay bales, and compost filter tubes)
- Installing tracking pads at the site exits (to further limit truck tire tracking of mud onto roadways)
- Street-sweeping on North Main Street

Dust monitoring is also used to confirm that these strategies are successful and to direct focused controls as necessary.

Weaver's Cove Soils: Analysis and Practices

- Soils at Weaver's Cove Layover facility have been extensively sampled and analyzed for a wide variety of contaminants
- Old tanks and debris are properly disposed off-site at permitted and licensed facilities
- Soils brought in to prepare the site are tested before delivery
- Contamination from the former site uses (e.g., Shell) is present at significant depths but SCR excavation does not extend to those depths
- The earthwork conforms with environmental permits, notifications and evaluation for the presence of artifacts



*Installing Weaver's
Cove drainage*

Further information regarding the site can be found in MassDEP online files at
<https://eeaonline.eea.state.ma.us/EEA/fileviewer/Rtn.aspx?rtn=4-0000749>

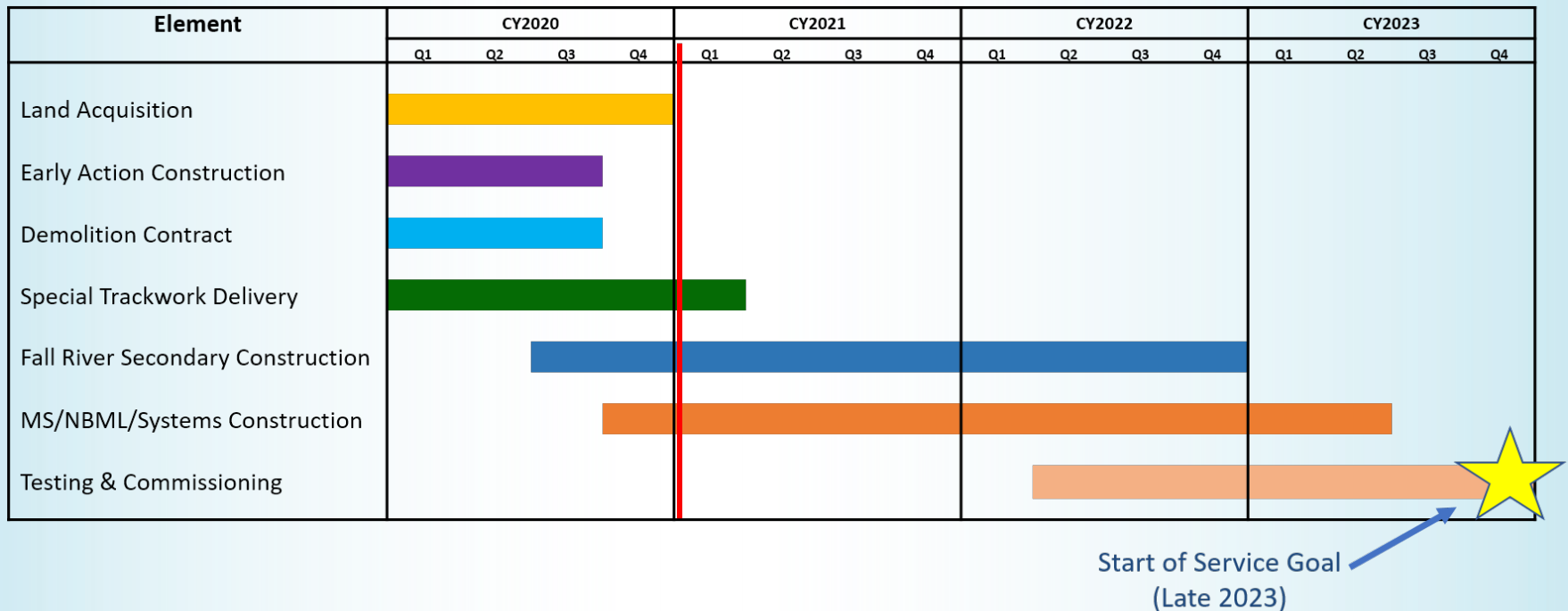
Offsite Traffic Mitigation

These improvements are under design now, in coordination with the city, bids by the end of 2021, construction in 2022:

- President Ave at North Main St.: Adding left turn lanes in North Main St, new traffic signal system, new sidewalks and ADA compliant curb ramps
- President Ave at North Davol St.: New pedestrian signals, new sidewalks and ADA compliant curb ramps and improved timing for pedestrian crossings

The SCR team will continue coordination with the Route 79 project throughout design

Phase 1 Construction Schedule



Weekly Construction Updates – Sign up!



You are subscribed to the South Coast Rail Project from the MBTA and Massachusetts Department of Transportation.

Construction Updates for February 9

Work on Middleborough Secondary and New Bedford Main Line

Tree Clearing Activities from Middleborough to Taunton

This week and next, the contractor continues with tree clearing and erosion control work at the new Middleborough Station and East Taunton Station sites including along the railroad right-of-way between the two sites.

Tree cutting along the railroad corridor will be necessary for construction. Additionally, to ensure safe and unobstructed service, the MBTA needs a cleared right-of-way. Falling tree limbs and wet tree leaves on the rails are a hazard that can cause derailment. Because the Phase 1 tracks have seen very limited use, overgrowth has occurred. This work is occurring along the rail corridor heading from north to south. To maintain the safety and efficiency of the railway, trees and heavy brush obstructing the right-of-way will not be replaced.

The contractor also continues with equipment mobilization, site set up, and survey work along the railroad right-of-way from Middleborough to New Bedford.

- **Location of Work:**
 - New Middleborough Station site, 161 South Main Street, Middleborough
 - East Taunton Station site, 1141 County Street, Taunton
 - Middleborough Secondary and New Bedford Main Line right-of-way (see map at www.mbta.com/projects/south-coast-rail)
- **Dates/Hours of Work:**
 - Current week: Monday, February 8 through Friday, February 12, 7:00 AM to 3:30 PM
 - Next week: Tuesday, February 16 through Friday, February 19, 7:00 AM to 3:30 PM (no work on Monday, February 15 for holiday)

The Hotline and Stakeholder Briefings

- **To report a construction-related issue on the South Coast Rail project, call the hotline at 774-762-7000.** It will be answered Monday-Friday, between 7:00 AM and 3:30 PM (except holidays). All voicemails left outside of these hours will be received on the following 7:00 AM to 3:30 PM weekday shift. We will respond to all complaints.
- The SCR team is available to meet with residents, businesses and elected officials during construction to discuss issues and update stakeholders

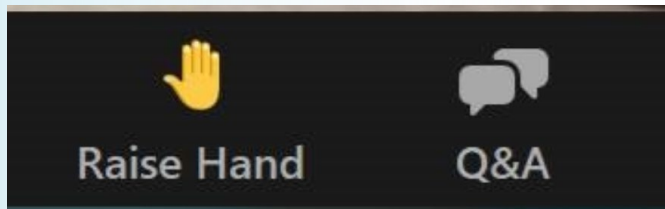
How to Follow SCR

- Visit the project website and sign up for updates and construction information:
www.mass.gov/south-coast-rail
- Participate in a virtual public meeting taking place in SCR communities
- Send us comments at
SouthCoastRail@dot.state.ma.us
- Construction hotline:
774-762-7000



Q+A after the Presentation

- Please share only **one** question or comment at a time
- Use the **Q&A** button to submit a typed question or comment
- Press the **RAISE HAND** button to share your question or comment verbally. Wait for the moderator to recognize you and unmute you before speaking.
- Attendees who speak Spanish or Portuguese must raise their hands to provide comments or questions verbally for the interpreters to hear you



*Tech issues?
Call 508-443-4045*

*If you are joining via phone only, you may press *9 to raise your hand.*