



**Massachusetts Bay  
Transportation Authority**

# South Coast Rail Phase 1 Update

---

MassDOT Board of Directors & Fiscal and Management Control Board

February 22, 2021

Jennifer Tabakin

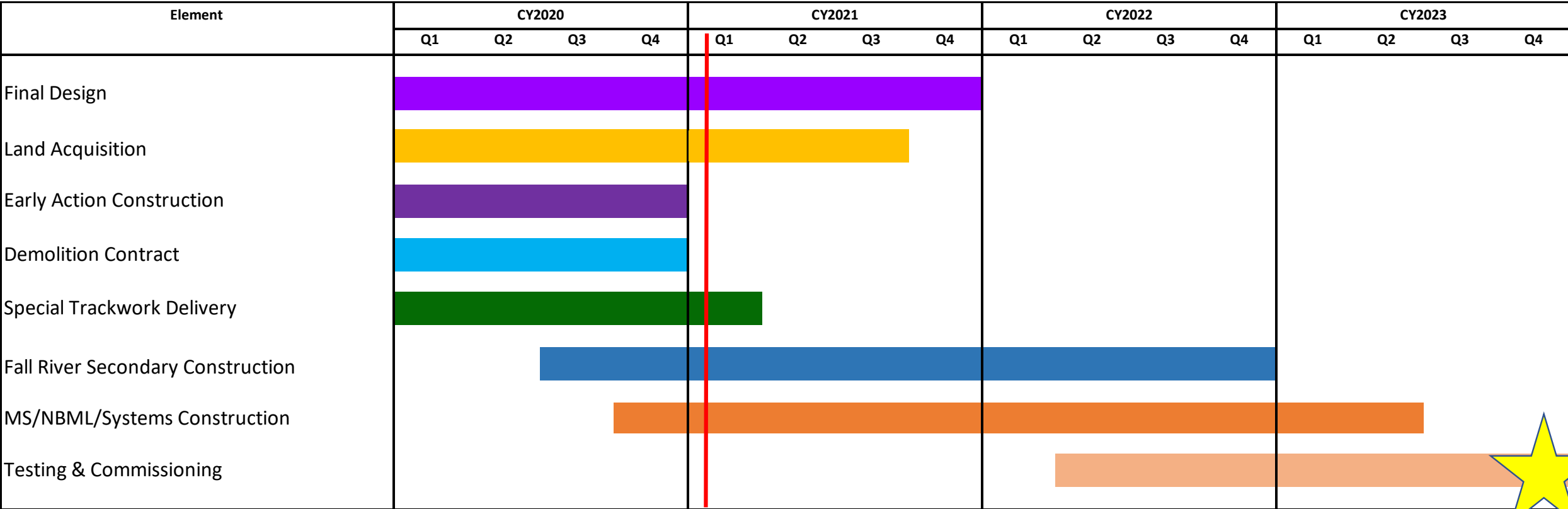
# Winter 2021 - Quarterly Update

---

- ✓ **\$562M of construction work** ongoing on the Fall River Secondary, Middleborough Secondary, New Bedford Main line in two contracts:
  - Fall River Secondary (K78CN03) – \$158M, Skanska/D.W. White continues tree clearing, pile driving for retaining wall and installation of underground utilities. 13% complete.
  - Middleborough Secondary/New Bedford Mainline/Signals (K78CN04) – \$403M, SCR Constructors (Middlesex/Tudor Perini), mobilized at Middleborough Station and East Taunton Station; erosion control and tree clearing and grubbing is underway. 3% complete
- ✓ **\$27.2M of construction work** awarded for Route 24 bridge and traffic signals to Cardi Corporation.
- ✓ **\$44.6M of SCR construction work completed** in three early action contracts: 1) Demolition of 12 buildings (K78CN02) – D. W. White Construction; 2) 46 Culverts and 3) 4 Bridges .
- ✓ **VHB/HNTB progressing with design** and permitting for two packages: 1) Traffic mitigation work in Middleborough, Taunton, New Bedford and Fall River (design completion 2021) and 2) New Bedford Pedestrian Bridge, (design completion 2022 CYQ1.)



# Phase 1 Construction Schedule



Start of Service Goal  
(Late 2023)



# Construction Contracts

Updated, Jan. 2021

Contract	Contractor	Estimate at Completion	Spending thru December 2020	Percentage Spent	Percentage Complete
46 Culverts*	JF White	\$19,593,756	\$17,803,439	90.9%	99%
4 Bridge	JF White	\$23,756,351	\$23,438,626	98.7%	99%
Demolition	DW White	\$1,245,000	\$1,241,231	99.7%	100%
Fall River Secondary	Skanska/DW White	\$158,500,000	\$6,783,897	4.3%	13%
MS/NBML/Systems	SCR Constructors	\$403,770,002	\$6,540,883	1.6%	3%
MassDOT Route 24/140 Interchange (SCR Participation)	Cardi Corporation	\$27,200,000	\$0	0%	0%
New Bedford Pedestrian Bridge	TBD	\$8,577,969	\$0	0%	0%
Traffic Mitigation	TBD	\$7,797,004	\$0	0%	0%
Street Paving & Signage	TBD	\$352,000	\$0	0%	0%
<b>Total:</b>		<b>\$650,752,582</b>			

\*includes  
1.4M spent  
prior to FY20

# South Coast Rail Authorized Funds & Spending

		Total	MBTA	MassDOT
<b>Prior Years</b>	FY19/20	\$ 174.5	\$ 63.5	\$ 111.1
<b>Current Year</b>	FY21	\$ 138.8	\$ 120.6	\$ 18.2
	FY22	\$ 295.8	\$ 289.0	\$ 6.8
	FY23	\$ 371.1	\$ 364.3	\$ 6.8
<b>Future Years</b>	FY24	\$ 86.4	\$ 79.6	\$ 6.8
	FY25	\$ 39.8	\$ 33.0	\$ 6.8
	FY26	\$ 36.2	\$ 36.2	\$ -
	<b>Total</b>	<b>\$ 1,142.6</b>	<b>\$ 986.1</b>	<b>\$ 156.5</b>



# Fall River Secondary Construction

**Scope:** 12.1 miles of track, 2 stations, layover facility at Weaver's Cove Fall River, 8 bridges, 10 grade crossings and 10 culverts.

**Budget:** Contract Awarded: \$159M to Skanska/DW White.

**Activities Underway:**

- Adam's Lane to Beechwood - installation of sheet pile walls
- Delivery of 5,000 new ties and rail material.
- Fabrication of critical materials for the ROW.
- Drainage, site prep and utility work at Weaver's Cove
- Fall River Depot Station and Freetown Station: underground utility prep work, site clearing and grubbing.
- 507 engineering submittals received from the Contractor
- Look ahead: Culvert work to start next quarter
- Look ahead: Foundation work at Fall Depot Station

**Activities Completed:**

- Relocation of existing overhead power lines at Weaver's Cove
- 13,380 linear feet of clearing and grubbing on ROW
- 8,920 linear feet of erosion control installed on ROW
- 1,168 linear feet of sheet pile walls installed.
- Soldier Pile wall prep work Freetown Station
- Fall River Depot site clearing and grubbing.



# Middleborough Secondary/New Bedford Main Line Construction

## Scope:

- 24.1 miles of track
- 4 new stations
- Layover facility in New Bedford
- 18 grade crossings
- 11 culverts
- Systems and infrastructure

## Budget:

- Contract Awarded: \$403M
- Contractor: SCR Constructors (Middlesex/Tutor Perini)
- NTP Phase II was issued to SCR Constructors (Middlesex/Tutor Perini) on December 14, 2020.

## Activities Underway:

- Clearing and Grubbing along the Middleborough Secondary
- Culvert Work Planning
- Survey crews from Taunton towards New Bedford
- Submittals and RFIs are coming in
- New Bedford baseline schedule, pending final approval.
- SCR Constructors are also proceeding with submittals of QA Plan, Environmental Management Plan, and other priority submittals.



# South Coast Rail Signals/PTC/Communication

## Scope:

- Signals
- Communication and PTC
- Rail Activation Plan & Testing
- Milestone – PTC Preliminary Design Scheduled June 27, 2021

## Budget:

- Signal, Communication and PTC for both the Fall River and the MB/NB line is within the contract awarded to SCR Constructors (Middlesex/Tudor Perini). Sub-Contractor: Fischbach and Moore

## Activities Underway:

- Preliminary Signal Design Approved and Final Design on Schedule Next Contract Milestone – PTC Preliminary Design Scheduled June 27, 2021
- Long Lead Signal Hardware approved: Signal Processors, Switch Machines, Highway Grade Crossing Warning Gates and Flashers, Signal Foundation and Signal Houses and Cases

## Rail Activation Plan:

- The rail activation program will verify system readiness for revenue service operation, and compliance with contract requirements by conducting a systematic series of tests and drills.
- Provides a framework for identifying the rail activation organization and defining roles and responsibilities for transitioning into revenue service.





# Coach Procurement & Locomotive Overhaul

## Coach Procurement:

- SCR 16 bi-level coaches - Hyundai Rotem
- SCR budget: \$69,037,292
- Car-body and sub-assemblies in process, material deliveries on schedule and truck frame assembly in process for pilot coaches
- Outfitting of first Pilot Coaches to begin in February 2021. Pilot Coaches arriving Spring 2022.

## Locomotive Overhaul:

- Units are being overhauled to meet SCR fleet needs. Work involves removal and rebuild of all components, painting and body overhaul.
- New systems include: 26L pneumatic braking system, piping and air tanks, QES III control, LED lighting components, switching steps, and rear track receiver bars and lights

## PTC Installation – Mass Coastal Locomotives:

- MBTA to enter agreement with Mass Coastal to install PTC equipment on up to 6 locomotives.
- AECOM to develop scope, specifications and contract development.
- SCR Budget: \$3,000,000
- Allows freight line to operate on PTC equipped lines

## Freight train changes to accommodate passenger trains:

- SCR will be converting existing siding into passenger track
- MBTA to add two tracks in Middleborough Freight Yard, for use of freight lines, including CSX.



# SCR Design Phase Projects

## Traffic Mitigation

- Traffic signals and mitigation work in Taunton, Middleborough, Fall River
- Engineer: VHB/HNTB
- Plans, specification and estimates, 9/21.
- Award of contract, expected Dec 2021.
- Work to coordinate with the decommissioning of West Clark Street Grade Crossing in the late summer of 2022

## Pedestrian Bridge

- New Bedford Pedestrian Bridge in active design.
- Engineer: VHB/HNTB
- Elevators and canopy required to meet MBTA Accessibility policy.
- The Contract will be advertised in spring of 2022
- Final Completion spring of 2023
- Current estimate: \$9 - \$13M

## Full Build

- Design to start in 2022.
- Engineer: VHB/HNTB JV
- Scope – connect South Coast Rail to the Stoughton Line.



South Coast Rail Project Website: [www.mass.gov/southcoastrail](http://www.mass.gov/southcoastrail)



S/DWW installed  
drainage piping &  
structures  
(Weaver's Cove)



S/DWW sealing pipe  
penetrations & installing  
inverts in structures  
(Mother Brook Sewer)



Cook Forest Products  
clearing south of Fall  
River Country Club



# Appendix



# South Coast Rail Construction Completion

## Early Action Culverts

- Substantial Completion (Contract Closeout)
- MassDOT Contract: 106341 – JF White (\$19.6M\*)
- 46 Culverts
- Working on punch list items
- Wetland replication areas in the Spring

## Early Action 4 Bridges

- Substantial Completion (November 2020)
- MassDOT Contract: 609200 - JF White (\$23.8M\*)
- Working on punch list items
- Designer compiling the final inspection and rating reports

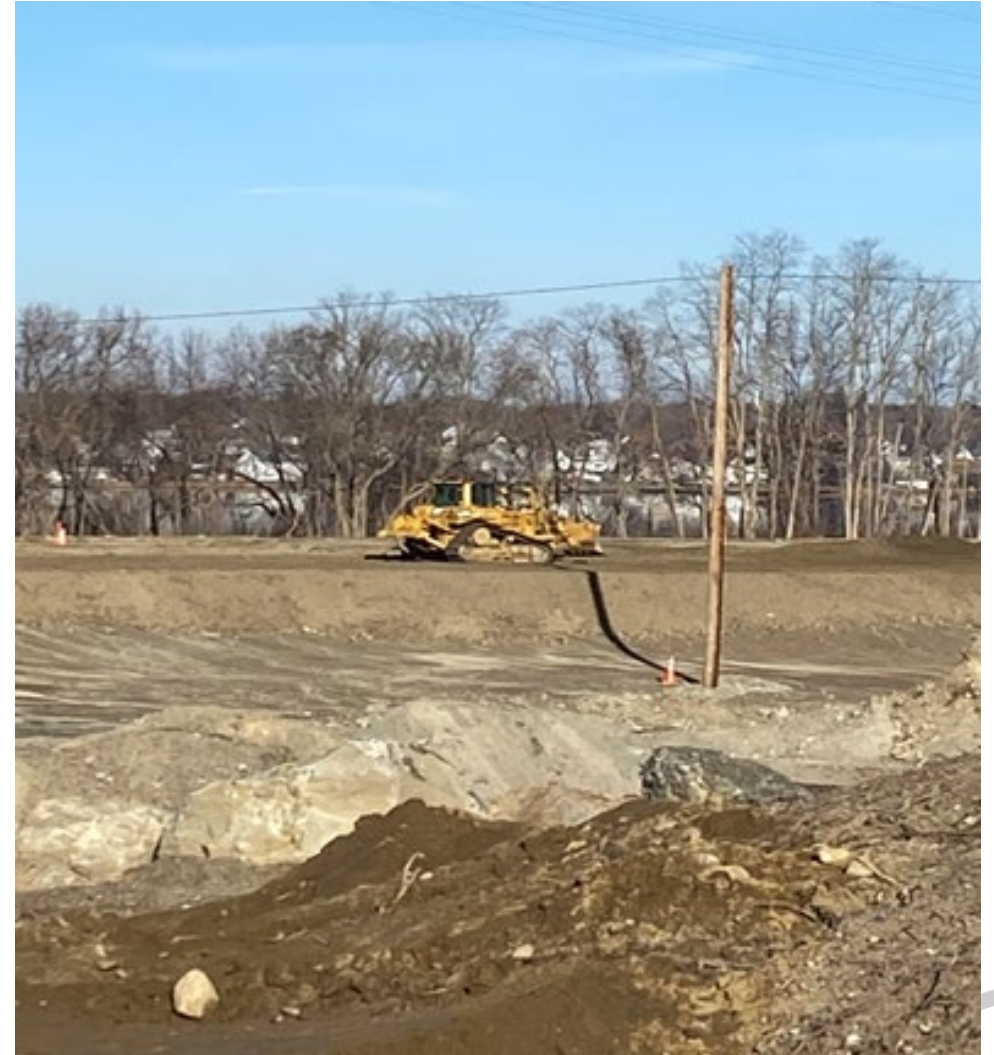
## Early Action Demolition

- Substantial Completion (October 9, 2020)
- Project is projected to be 490K under budget
- K78CN02 – DW White (\$1.2M\*)
- Demolition of 12 structures at ten locations
- MBTA is writing up final construction reports
- Contractor is finalizing as-build documents

\*Estimated at completion











Middleborough Secondary/New  
Bedford Mainline/Signals  
(K78CN04)

