



www.mass.gov/southcoastrail

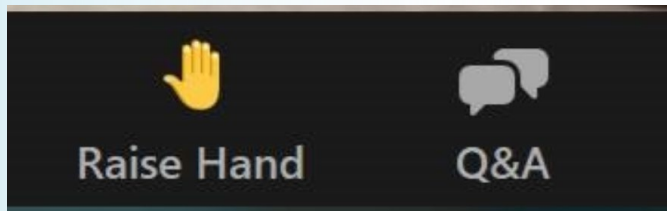


South Coast Rail - Phase 1 Taunton Community Meeting

February 4, 2021

Q+A after the Presentation

- Please share only one question or comment at a time.
- Use the **Q&A** button to submit a typed question or comment.
- Press the **RAISE HAND** button to share your question or comment verbally. Wait for the moderator to recognize you and unmute you before speaking.
- Attendees who speak Spanish or Portuguese must raise their hands to provide comments or questions verbally for the interpreters to hear you.



*Tech issues?
Call 508-443-4045*

*If you are joining via phone only, you may press *9 to raise your hand.*

Overview: Project Update

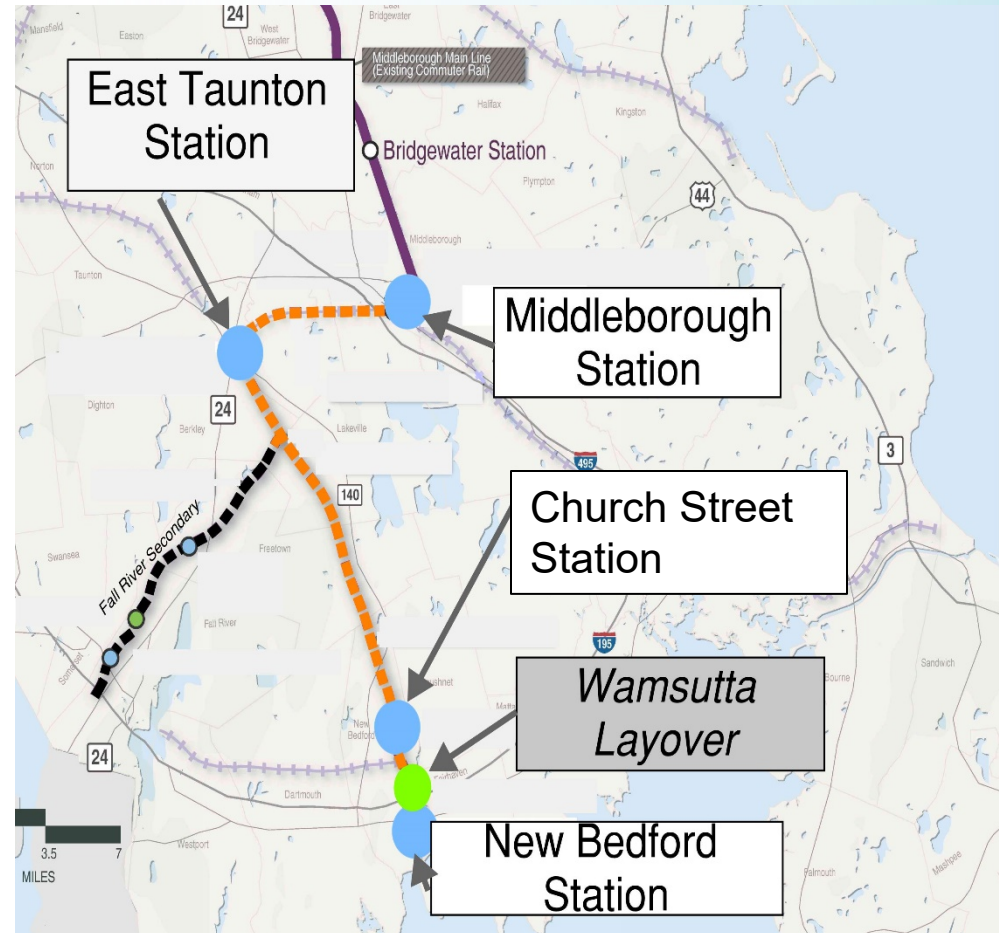
- Phase 1 service is planned for the end of 2023, and is fully funded in the FY20-FY24 Capital Investment Plan
- The MBTA awarded the Fall River line construction package to Skanska DW White JV for nearly \$159M and the Middleborough Secondary, New Bedford Main Line and Systems contract was awarded to the Joint Venture of South Coast Rail Constructors for \$403.5 million (The Middlesex Corporation and Tutor-Perini)
- Construction began for both contracts by the end of 2020.
- Early action work is nearly complete to prepare the right-of-way and replace 4 railroad bridges



*East Taunton Station
site clearing*

Elements of the New Bedford Main Line Package

- 27 Miles Track
- 4 New Stations – *East Taunton included*
- 1 Layover, Wamsutta
- 11 Grade Crossings
- 10 Culverts
- Systems Installation
- Positive Train Control
- Test/Commissioning
- Safety Certifications



Environmental Protection during Construction

- Erosion controls installed per permits and regularly inspected by the contractor, MBTA and DEP (as well as local conservation commission)
- Protection fencing installed in sensitive species and cultural resource areas
- Weekly SWPPP inspections (and after significant rain events) to ensure BMPs are adequate and in good working order, and areas are stabilized
- Culvert replacements have approved bypass plans and dewatering set-ups
- RAM plans in place for work at known hazardous materials sites
- Training for Conservation Commission members to inspect permitted areas

Construction in Taunton

- Preparation included removing encroachments on the Right-of-Way (ROW) and demolition
- At the station site: clearing and grubbing and tree clearing are in progress; erosion controls are being installed; soils will be moved in the next few weeks
- Soil testing will take place on the ROW for the next few weeks
- Protective fencing has been installed for cultural resources and plant species

Construction Practices and Policies

- Typical hours of construction are 7 am – 3:30 pm
- Grade Crossings are an exception, with 24-hour work to complete them since they must be closed
- All contractors must comply with health and safety regulations regarding COVID- 19 and compliance is monitored
- Pre-construction pest and rodent management is required of all contractors
- Dust control and management are required and monitored using water trucks and applications of hydroseed and stabilizers

Construction Underway – Station Site Clearing



Typical Construction Practices



*Clearing and grubbing along
the right-of-way*

*Installing erosion
protection (example)*



Construction Photos – Rail Delivery



*Offloading 1600-foot
lengths of rail
(Freetown)*

East Taunton Station Rendering



East Taunton Station Features

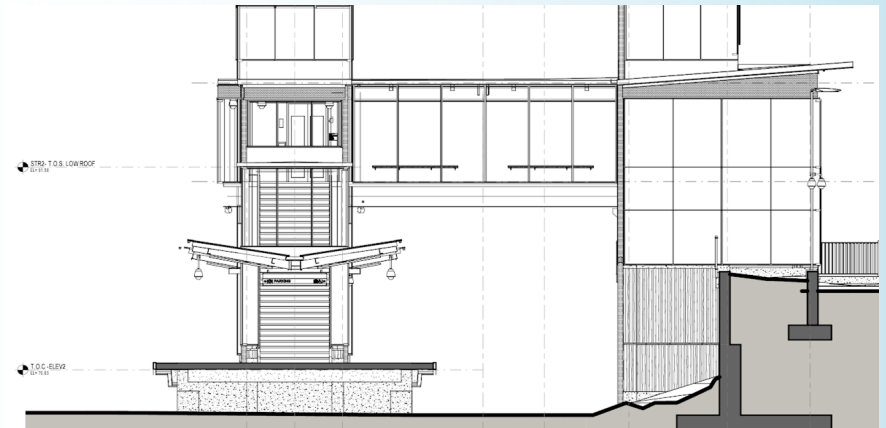
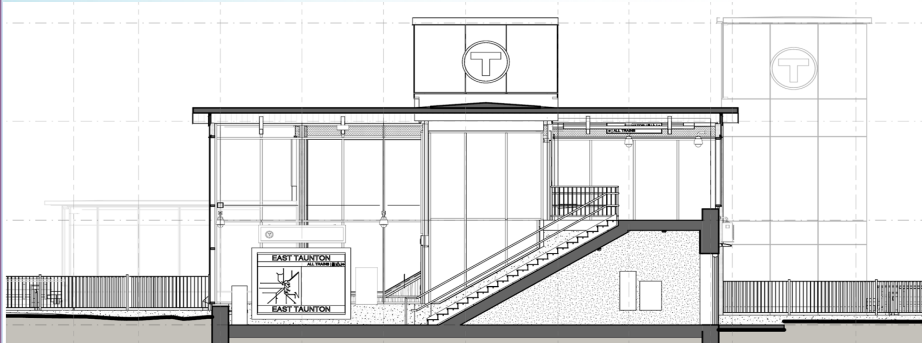
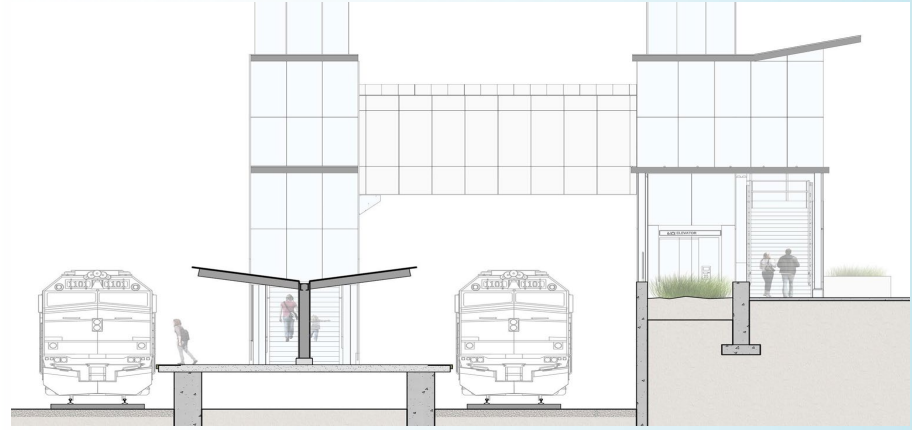
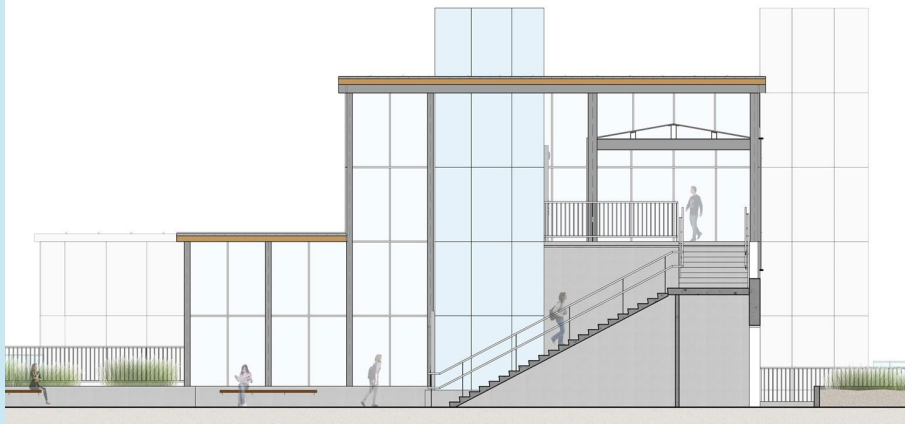
- Located at 1141 County St. (Route 140 and Industrial Drive), Taunton
- High level, center island platform – the only one in SCR Phase 1 - with elevators, ramps & bridges for the vertical circulation
- 800-foot platform with 4 canopies
- Transition plaza for bus stop and drop-off space
- Parking spaces – 363; bike parking, 22; accessible and EV parking
- Surrounding area improvements are included

Site Programming

- Vehicular parking – 363 spaces
- Rideshare parking
- Bicycle parking with canopies



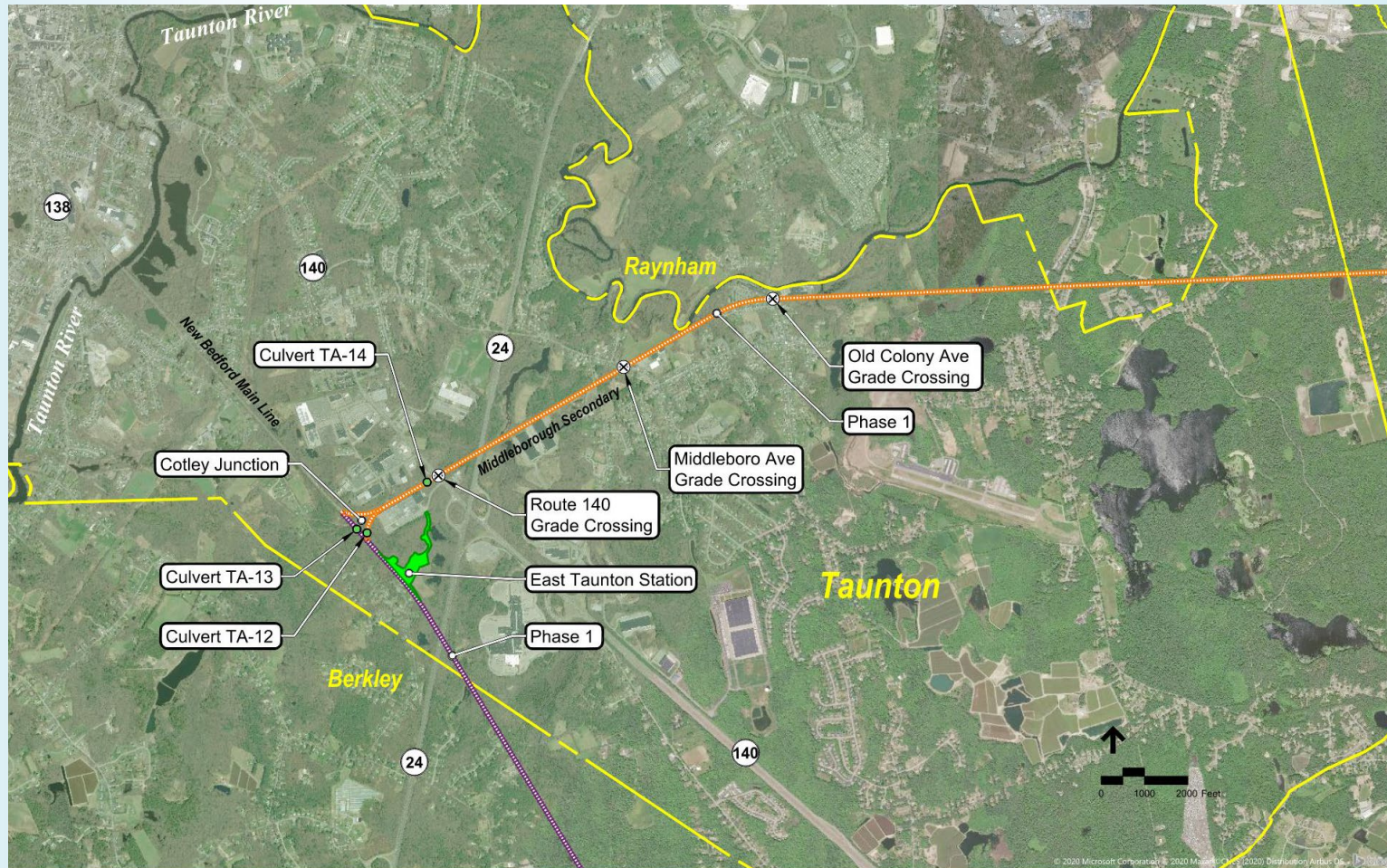
Accessing the Station





*Station site
aerial view*

Map of Grade Crossings & Right-of-Way



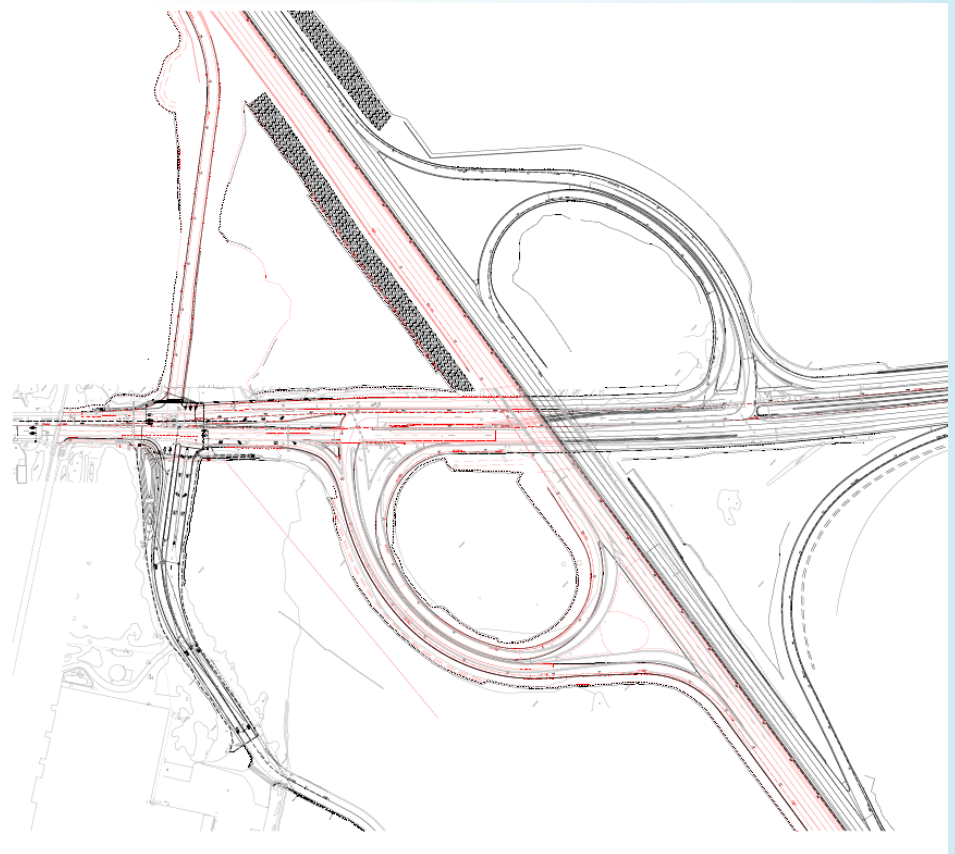
Area Improvements

- Entrance from Route 140 on to Industrial Drive, which will be aligned with the proposed Route 24 southbound slip ramp
- Adding a traffic signal and two new turn lanes on Industrial Drive
- Includes adding sidewalks along the west side of County Street and the north side of Industrial Drive
- Site work will support TOD on the Kelly property

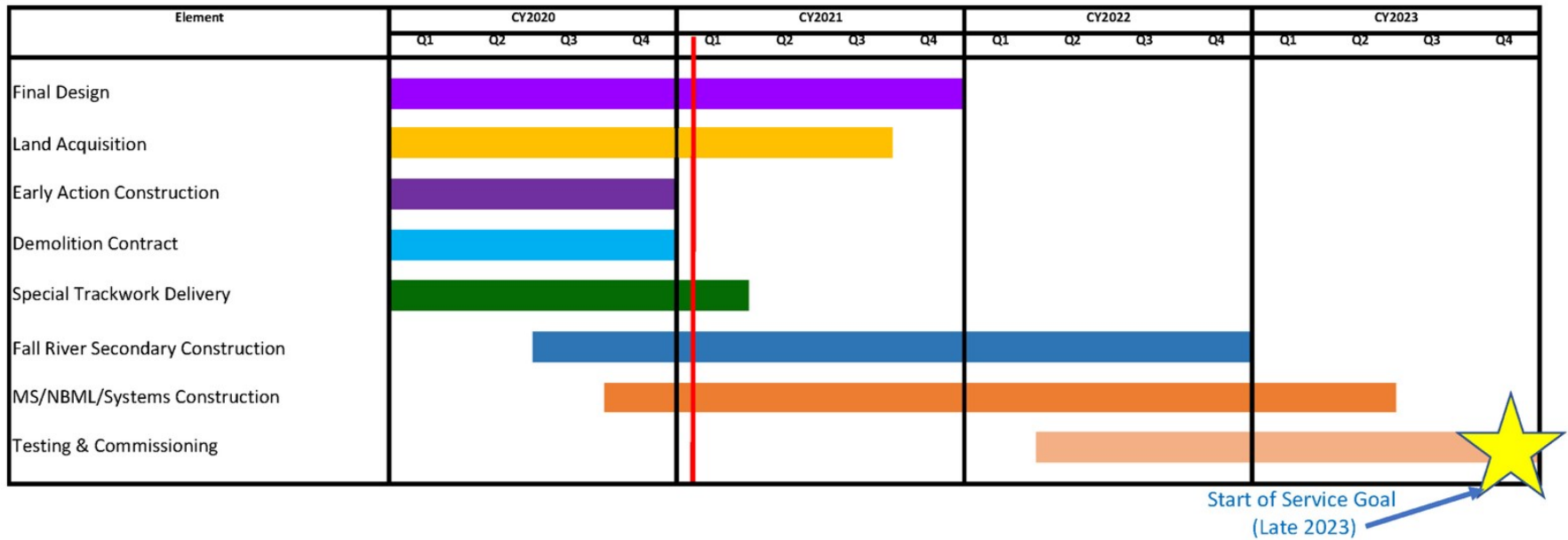


Route 24/140 Interchange

- Coordinating with Mass Highway
- Station entrance will be realigned to be opposite the Rt. 24 South Off-ramp



Phase 1 Construction Schedule



Weekly Construction Updates – Sign up!



You are subscribed to the South Coast Rail Project from the MBTA and Massachusetts Department of Transportation.

Construction Updates for January 19

Work on Middleborough Secondary and New Bedford Main Line

Tree Clearing Activities from Middleborough to Taunton

This week and next, the contractor continues with tree clearing and erosion control work at the new Middleborough Station and East Taunton Station sites including along the railroad right-of-way between the two sites.

The contractor also continues with equipment mobilization and survey work along the railroad right-of-way from Middleborough to New Bedford.

- **Location of Work:**
 - New Middleborough Station site, 161 South Main Street, Middleborough
 - East Taunton Station site, 1141 County Street, Taunton
 - Middleborough Secondary and New Bedford Main Line right-of-way (see map at www.mbta.com/projects/south-coast-rail)
- **Dates/Hours of Work:**
 - Current week: Monday, January 18 through Friday, January 22, 7:00 AM to 3:30 PM
 - Next week: Monday, January 25 through Friday, January 29, 7:00 AM to 3:30 PM

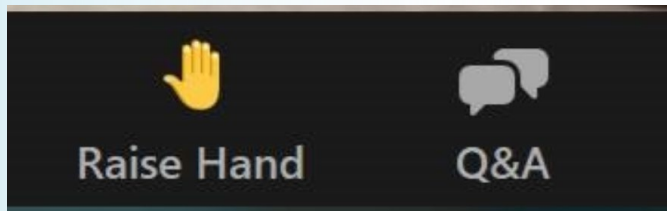
How to Follow SCR

- Visit the project website and sign up for updates and construction information:
www.mass.gov/south-coast-rail
- Participate in a virtual public meeting taking place in SCR communities
- Send us comments at
SouthCoastRail@dot.state.ma.us
- Construction hotline:
774-762-7000



Q+A after the Presentation

- Please share only one question or comment at a time.
- Use the **Q&A** button to submit a typed question or comment.
- Press the **RAISE HAND** button to share your question or comment verbally. Wait for the moderator to recognize you and unmute you before speaking.
- Attendees who speak Spanish or Portuguese must raise their hands to provide comments or questions verbally for the interpreters to hear you.



*Tech issues?
Call 508-443-4045*

*If you are joining via phone only, you may press *9 to raise your hand.*