



**Massachusetts Bay  
Transportation Authority**

# Capital Program Update: FY21 Update through November 30, 2020

---

Joint Meeting of the MassDOT Board & Fiscal and Management  
Control Board

January 11, 2021

Joanna Aalto and Vikram Dogra

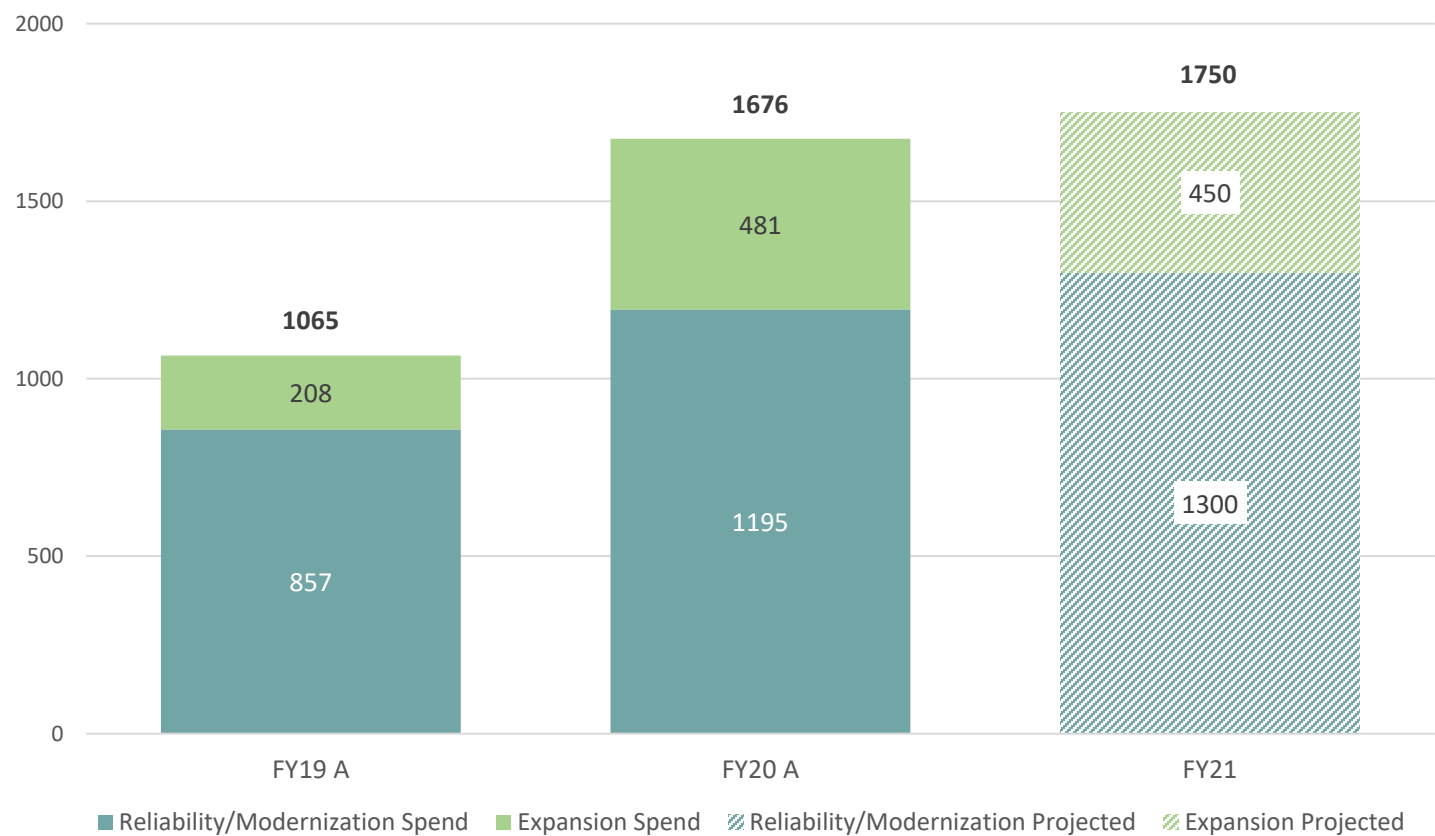
## The MBTA continues to set aggressive Capital Key Performance Indicators (KPIs) for FY21

Key Performance Indicator	FY19 Actual	<i>FY19 Target</i>	FY20 Actual	<i>FY20 Target</i>	FY21 Actual (thru 11/30)	<i>FY21 Target</i>
Total Capital Investment	\$1.07B	\$1B	\$1.67B	\$1.4B	\$691M	\$1.75B
Reliability/Modernization Programs Capital Investment	\$857M	\$850M	\$1.19B	\$875M	\$484M	\$1.3B
Expansion Programs Capital Investment	\$208M	\$150M	\$481M	\$539M	\$207M	\$450M
Capital Construction Contracts Awarded	\$849M	\$650M	\$343M	\$850M	\$416M	\$628M
Vehicle Procurement Contracts Awarded	\$406M	>\$300M	\$397M	\$250M	\$81M	\$244M

\* Actuals through 11/30/2020.

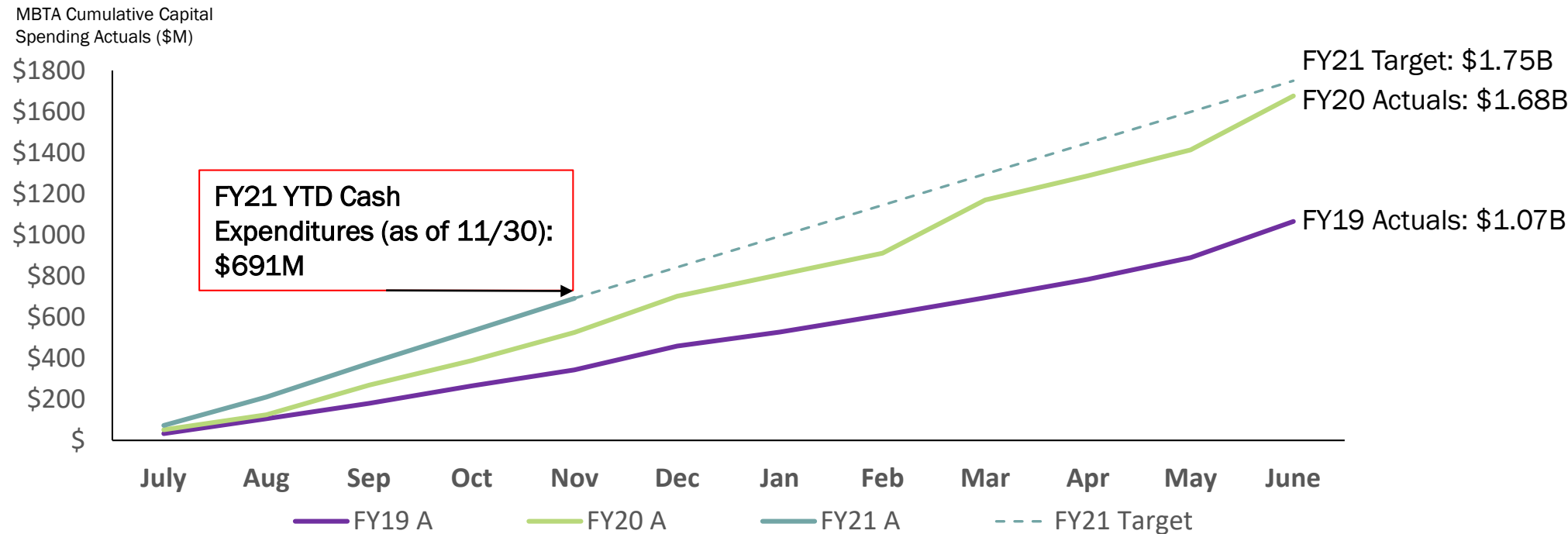
# MBTA Capital Investment by Fiscal Year (\$ millions)

MBTA Capital Investment target for FY21 is an increase over last year and reflects continued investment in capital



FY21 KPI: \$1.75B Total Capital Investment - YTD Total Spending vs. Previous Years. MBTA is on track to achieve the FY21 spend target

Total Capital Investment by Month and Fiscal Year (\$Millions) (FY21 actuals through 11/30/20)



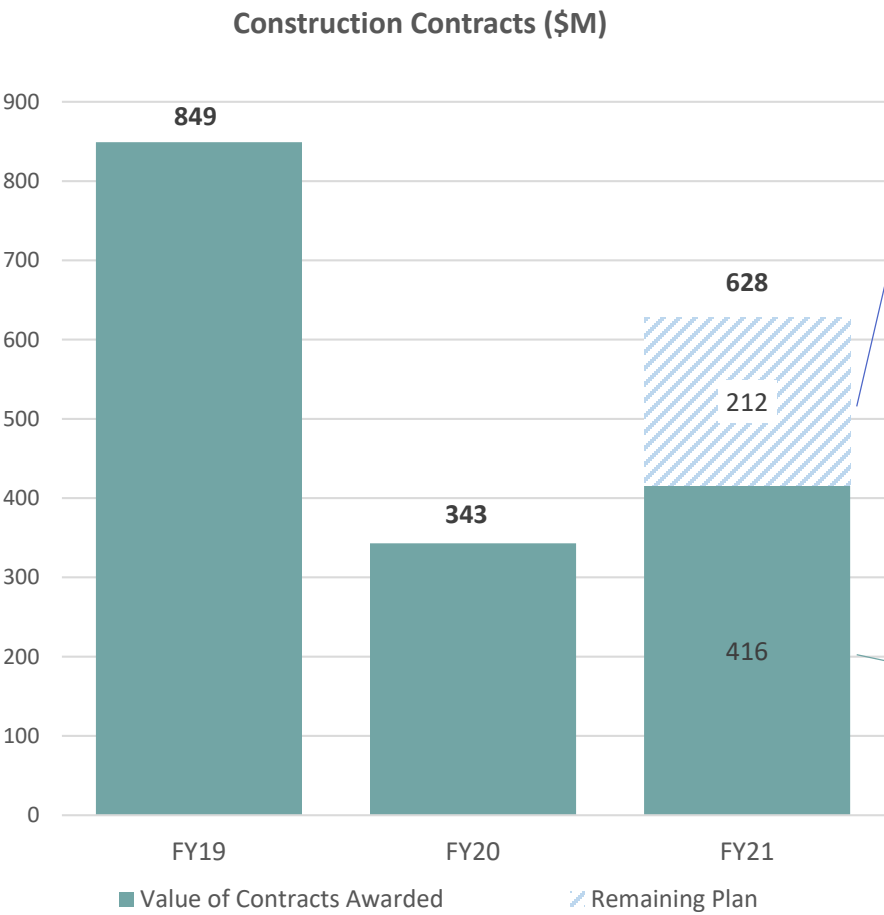
MBTA Cumulative Capital Spending Actuals (\$M)

	<u>July</u>	<u>Aug.</u>	<u>Sept.</u>	<u>Oct.</u>	<u>Nov.</u>	<u>Dec.</u>	<u>Jan.</u>	<u>Feb.</u>	<u>March</u>	<u>April</u>	<u>May</u>	<u>June</u>
<b>FY21 (\$M)</b>	\$72	\$211	\$375	\$532	\$691							
<b>FY20 (\$M)</b>	\$51	\$125	\$269	\$388	\$525	\$702	\$807	\$911	\$1,170	\$1,288	\$1,413	\$1,676
<b>FY19 (\$M)</b>	\$33	\$105	\$180	\$265	\$343	\$459	\$527	\$609	\$694	\$784	\$889	\$1,065



# FY21 KPI: Award > \$628M in Capital Construction Contracts – \$416M Awarded to date

MBTA is on track to meet FY21 Target



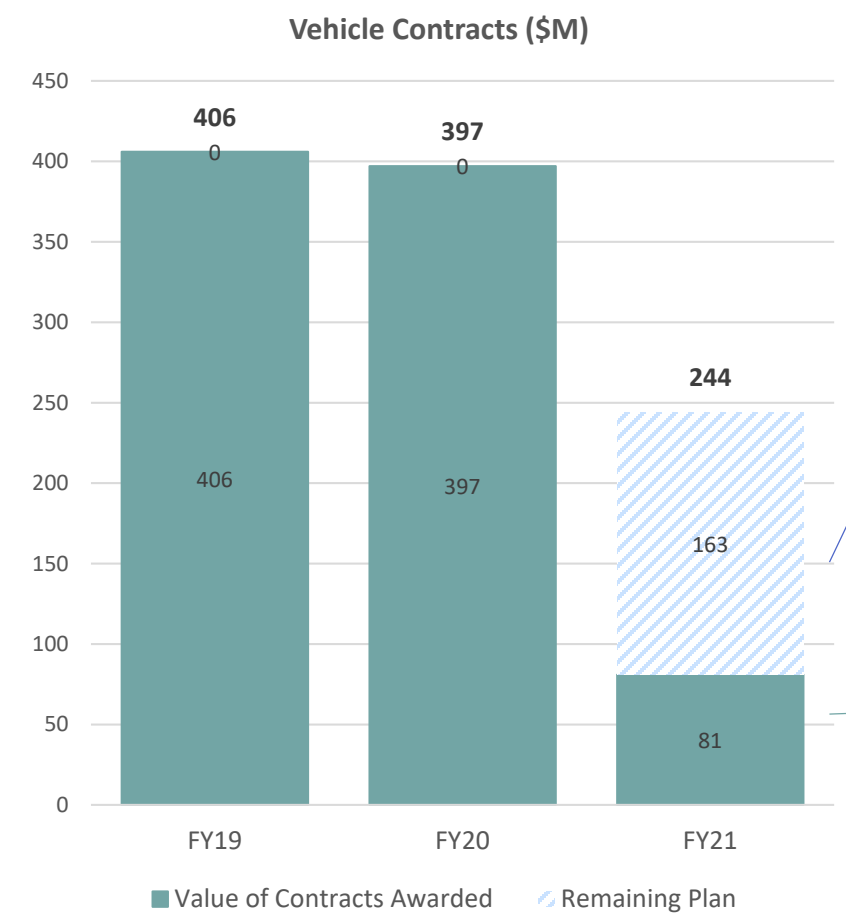
Anticipated Construction Contracts FY21	
Contract Description	Est. Value (M)
Fiber optic Resiliency (CR)- (Design Build)	\$45
Worcester Union Station	\$38
Dorchester Ave. Bridge*	\$34
Courthouse Station Leak Repairs	\$27
East Cottage/Norfolk Street Bridge	\$14
Courthouse Station Headhouse	\$15
Rt. 128 Parking Garage Repairs	\$12
On-Call Roofing - Transit Facilities	\$10
Alewife Parking Garage Repairs- MEP- Life Safety	\$7
On- Call Structures Repairs Systemwide	\$7
Alewife Parking Garage Concrete Repairs	\$3
Total	\$212

\* CIP Change in process for Dorchester Ave. Bridge

Awarded Construction Contracts – through 11/30/20	
Contract Description	Contract Value (M)
SCR- Middleboro Secondary NBML (New Bedford Main Line)	\$403
On-Call Track and MOW (Commuter Rail)	\$11
Aquarium Station Floodproofing Improvements	\$2
Total	\$416

# FY21 KPI: Award \$244M in Vehicle Procurement Contracts - \$81M Awarded

The MBTA is on track to meet FY21 Target



Anticipated Vehicle Contracts FY21	
Contract Description	Est. Value (M)
160 New 40-foot EEH Buses	\$135
60 ConnDOT 40-foot Hybrid Bus Overhaul	\$25
Professional Services for 160 New Buses	\$2
Professional Services for 60 Bus Overhaul	\$1
Total	\$163

Awarded Construction Contracts – through 11/30/20	
Contract Description	Contract Value (M)
45 New 60-foot low floor EEH Buses	\$81
Total	\$81

# Most 2020 construction projects underway, with many upcoming projects in design










Line	Snapshot of FY 21 Q1 Projects	Highlights
Green Line	<ul style="list-style-type: none"> <li>4 completed, 2 projects in construction, 7 in design</li> <li>Completed two (2) 28-day full access closures (E and B) in Boston &amp; Brookline (17,500 feet of track)</li> <li>Focused on <b>track renewal &amp; infrastructure</b>, to improve Reliability and Resilience</li> </ul>	<ul style="list-style-type: none"> <li>B, C &amp; E Track &amp; Intersections</li> <li>Fenway Portal, Lechmere</li> </ul>
Red Line	<ul style="list-style-type: none"> <li>3 projects completed, 10 underway, and 6 in design</li> <li>Focus on <b>station Accessibility</b>, with over <b>17 elevators in construction or design work</b>, and improved station wayfinding.</li> <li><b>Track / yard work</b> for new vehicles</li> </ul>	<ul style="list-style-type: none"> <li>Park St Station</li> <li>S. Shore Garages</li> <li>Alewife Crossover</li> </ul>
Orange Line	<ul style="list-style-type: none"> <li>2 projects completed, 6 underway starting in 2020, and 11 in design</li> <li>Focus on <b>track and yard work</b>, to support new vehicle deliveries</li> <li>Additional focus on stations, with several <b>accessibility projects</b> in design</li> <li>Orange Line <b>vehicle</b> delivery continued</li> </ul>	<ul style="list-style-type: none"> <li>Wellington Tracks 33-38</li> <li>Wellington Maintenance Facility</li> <li>Sullivan Canopies</li> </ul>
Commuter Rail	<ul style="list-style-type: none"> <li>1 project completed, 8 underway, and 6 in design</li> <li>Significant focus on <b>critical signal projects</b>, for ATC/PTC, South &amp; North Stations</li> <li>Initiated procurement for 83 bi-level Commuter Rail coaches</li> </ul>	<ul style="list-style-type: none"> <li>PTC/ATC</li> <li>Chelsea Station</li> <li>Worcester Triple Track</li> </ul>
Bridge	<ul style="list-style-type: none"> <li>4 projects underway (including 6-bridge bundle), and 10 in design</li> <li>Replace end-of-life bridges, allow for increased load capacity &amp; fewer upkeep costs</li> </ul>	<ul style="list-style-type: none"> <li>Gloucester Draw Bridge</li> <li>Rail Bridge Replacements (6)</li> <li>Robert Street Bridge</li> </ul>
Blue / Silver / Ferry / Custom	<ul style="list-style-type: none"> <li>2 projects completed, 3 underway or starting in 2020, and 3 in design</li> <li>Focus on <b>repairing water-adjacent structures</b>, and improving station accessibility</li> </ul>	<ul style="list-style-type: none"> <li>Harbor Tunnel Repairs</li> <li>Courthouse Station</li> </ul>
Bus	<ul style="list-style-type: none"> <li>3 projects completed, 6 being designed for construction in 2021</li> <li>Focus on bus maintenance facility upgrades, including paving, roof repairs, overhead doors, and lighting</li> <li>Completed bus overhaul; continued delivery of 254 diesel-electric hybrid buses to replace aging diesel buses</li> </ul>	<ul style="list-style-type: none"> <li>Bus Facility Paving</li> <li>Garage Updates</li> <li>Dedicated Bus Lanes</li> </ul>
SCR	<ul style="list-style-type: none"> <li>SCR – 3 projects completed, 4 projects are underway, and 2 projects are in design. Priority focus is on the mobilization \$562 construction work, utility work and real estate.</li> </ul>	<ul style="list-style-type: none"> <li>Fall River Secondary</li> <li>New Bedford Mainline</li> <li>Signal/Communication System</li> </ul>
GLX	<ul style="list-style-type: none"> <li>Project is currently 60% complete; revenue service projected for end of 2021; Project is working to mitigate supply chain impacts stemming from COVID-19 Pandemic. \$1.4 billion of Program's \$2.3 billion budget has been expended/realized</li> </ul>	<ul style="list-style-type: none"> <li>Light Rail Vehicles Delivery</li> <li>Vehicle Maintenance Facility</li> </ul>

# Appendix





# Projects by Program: Table of Contents

	<i>Line</i>	<i>Page</i>
	Green Line	Slides 9 - 10
	Orange Line	Slides 11 - 12
	Red Line	Slides 13 - 14
	Commuter Rail	Slides 16 - 18
	Bridge	Slides 19 - 20
	Blue Line, Silver Line, Ferry & System-wide	Slides 21 - 22
	Bus	Slides 23 - 24
	South Coast Rail	Slides 25 - 27
	Green Line Extension	Slides 27 - 28



# Green Line Transformation: FY21 Q1 Snapshot

Period	Project Name	Description / Benefits	Completion Date
"Completed"	C Branch Track & Intersection Upgrades	<ul style="list-style-type: none"> <li>Full-depth track reconstruction &amp; intersection</li> <li>Improved experience for riders, cyclists, drivers</li> </ul>	July 2020
	E Branch Track & Intersection Upgrades	<ul style="list-style-type: none"> <li>Full-depth track reconstruction &amp; signal upgrades</li> <li>Improve reliability, reduce risks of service disruptions</li> </ul>	Aug 2020
	B Branch Track & Intersection Upgrades	<ul style="list-style-type: none"> <li>Full-depth track reconstruction &amp; intersection upgrades</li> <li>Improve reliability, reduce risks of service disruptions</li> </ul>	Sep 2020
	Fenway Flood Portal	<ul style="list-style-type: none"> <li>Install flood doors &amp; gates at Fenway portal</li> <li>Prevent flooding of GL tunnel from Muddy River</li> </ul>	Nov 2020
"Underway" <i>In active construction</i>	Lechmere Viaduct	<ul style="list-style-type: none"> <li>Rehabilitate bridge over 100 years old</li> <li>Improve safety by addressing structural repairs</li> </ul>	Fall 2021
	D Branch Track & Signal Upgrades	<ul style="list-style-type: none"> <li>Replace track, signal, &amp; power along entire D Branch</li> <li>Improve reliability, reduce risks of service disruptions</li> </ul>	Fall 2021

# Green Line Transformation–Images of FY21 Q1 Work



**E Branch 28-Day Closure**  
South Huntington Section



**D Branch Track & Signal**  
Reservoir Yard



**C Branch 28-Day Closure**  
Town of Brookline



# Orange Line: FY21 Q1 Snapshot

Period	Project Name	Description / Benefits	Completion Date
"Completed"	Wellington Track 33-38	<ul style="list-style-type: none"> <li>Build 4,685 ft of track</li> <li>Supports new vehicle delivery &amp; storage</li> </ul>	October 2020
	Oak Grove Station Improvements	<ul style="list-style-type: none"> <li>Build/replace 4 elevators, stair repairs, &amp; new lobby</li> </ul>	Sep 2021
"Underway" <i>In active construction</i>	N. Station Wayfinding & Improvements	<ul style="list-style-type: none"> <li>Improve Accessibility, Reliability, and safety</li> <li>Stair repairs, floor patching, new signage &amp; tactile</li> <li>Improve Accessibility and safety</li> </ul>	May 2021
	Causeway Duct bank Replacement	<ul style="list-style-type: none"> <li>Replace two duct banks on Causeway Street</li> <li>Improve reliability, safety, and customer experience</li> </ul>	May 2021
	Sullivan Station Canopy & Platform Repair	<ul style="list-style-type: none"> <li>Repair deteriorated OL Station canopy and platform</li> </ul>	May 2021
	Wellington Yard	<ul style="list-style-type: none"> <li>Improve reliability, safety, and customer experience</li> <li>Replace/build track and new crossovers</li> <li>Improve Reliability, supports new vehicle delivery</li> </ul>	Spring 2022
	Wellington Maintenance Facility	<ul style="list-style-type: none"> <li>Install new equipment and power systems</li> <li>Improve Reliability, supports new vehicle delivery</li> </ul>	Spring 2022
	OL Traction Power Substation Upgrades	<ul style="list-style-type: none"> <li>Upgrades power infrastructure</li> <li>Supports system Reliability</li> </ul>	Winter 2024
	Orange Line Car Procurement	<ul style="list-style-type: none"> <li>152 Orange Line cars to replace fleet</li> </ul>	2023



# Orange Line: Project Images of FY21 Q1 Work



Wellington Track 33-38



Wellington Maintenance Facility:  
Track 11 Expansion



Causeway Ductbank

# Red Line: FY21 Q1 Snapshot (I/II)

Period	Project Name	Description / Benefits	Completion Date
<b>“Completed”</b>	Track Modernization (14-day surge)	<ul style="list-style-type: none"> <li>Replaced 2,400 ties, aligned 11,000 ft of rail, station concrete and elevator repairs</li> <li>Improve Reliability, safety, and customer experience</li> </ul>	Jun 2020
	Alewife Accessibility Improvements	<ul style="list-style-type: none"> <li>Replace 3 elevators, upgrade elect. &amp; mech. systems</li> <li>Improve Accessibility and customer experience</li> </ul>	Sep 2020
	Columbia Junction Signal Bungalow Repair	<ul style="list-style-type: none"> <li>3 damaged bungalows and signal system repaired</li> <li>Emergency repairs completed within 3 months</li> </ul>	Oct 2020
<b>“Underway”</b> <i>In active construction</i>	Alewife Garage Repair <i>(current contract)</i>	<ul style="list-style-type: none"> <li>Structural repairs, life safety upgrades</li> <li>Improve Reliability, safety, &amp; customer experience</li> </ul>	Feb 2021
	Harvard Busway Repair <i>(Interim Opening)</i>	<ul style="list-style-type: none"> <li>Tunnel repairs, replace roadway, signage, &amp; life safety</li> <li>Improve Reliability, Accessibility, &amp; customer exp.</li> </ul>	Dec 2020
	Red Line Car Procurement	<ul style="list-style-type: none"> <li>252 New Red Line Cars to replace fleet</li> </ul>	2024
	Park St Station	<ul style="list-style-type: none"> <li>New tactile edge, lighting, stair and floor repairs.</li> <li>Improve Accessibility,</li> </ul>	Dec 2020



# Red Line: FY21 Q1 Snapshot (II/II)

Period	Project Name	Description / Benefits	Completion Date
<b>"Underway"</b> <i>In active construction</i>	Transformer Replacement	<ul style="list-style-type: none"> <li>Replace 9 electric transformers for RL</li> <li>Improve reliability, safety, and customer experience</li> </ul>	Dec 2021
	Quincy Adams Elevators	<ul style="list-style-type: none"> <li>Replace/build 4 elevators on station platform</li> <li>Improve Accessibility and Reliability</li> </ul>	Mar 2021
	Quincy Adams Garage Improvements	<ul style="list-style-type: none"> <li>Overhaul garage, extend lifespan by 40 years</li> <li>Improve Reliability, safety, and customer experience</li> </ul>	Sep 2021
	Braintree Station Garage Improvements	<ul style="list-style-type: none"> <li>Overhaul garage, add 2 elevators to make accessible</li> </ul>	Oct 2021
	RL Test Track	<ul style="list-style-type: none"> <li>Improve Accessibility, Reliability, and safety</li> <li>Installation of new track, power, and third rail</li> <li>Allows testing of new vehicles, improve Resiliency</li> </ul>	Fall 2020
	Cabot Yard & Maintenance Facility	<ul style="list-style-type: none"> <li>Replace 29,000 ft of track and install new infrastructure</li> </ul>	Fall 2022
	RL Ductback Replacement	<ul style="list-style-type: none"> <li>Improve Reliability, Resiliency, and support new vehicles</li> <li>Replace electrical power ductbanks at various locations</li> <li>Improve reliability, safety, and customer experience</li> </ul>	May 2021

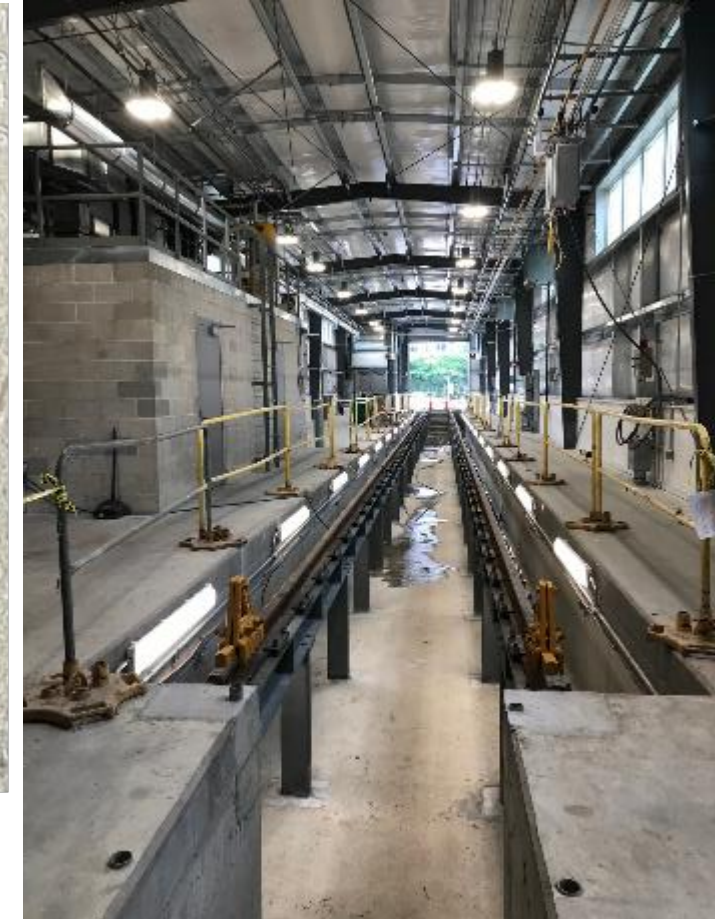
## Red Line – Project Images of FY21 Q1 Work



Elevator Work



RL Braintree Garage Improvement Project



Interior – Red Line Test Track,  
Vehicle Testing Facility



# Commuter Rail: FY21 Q1 Snapshot (I/II)

Period	Project Name	Description / Benefits	Completion Date
"Completed"	<b>Pawtucket Layover Facility</b> <i>(fuel station)</i>	<ul style="list-style-type: none"> <li>New &amp; expanded locomotive fluid handling station</li> <li>Allows R.I. refueling, supports increased maintenance</li> </ul>	Jul 2020
	<b>Chelsea Station Accessibility &amp; Infrastructure Improvements</b>	<ul style="list-style-type: none"> <li>New station next to SL3, improve grade crossings</li> <li>Improve Reliability, Accessibility, and safety</li> </ul>	Sep 2021
"Underway" <i>In active construction</i>	<b>North Station Terminal</b>	<ul style="list-style-type: none"> <li>Upgrade &amp; modernize communication / signals</li> <li>Improve Reliability, throughput, and Ops flexibility</li> </ul>	Dec 2022
	<b>South Station Terminal (Tower 1)</b>	<ul style="list-style-type: none"> <li>Upgraded track, communication / signals</li> <li>Improve Resiliency, Reliability, throughput, Ops flexibility</li> </ul>	Fall 2026
	<b>Ruggles Station (CR)</b>	<ul style="list-style-type: none"> <li>New side platform, with 5 new/replaced elevators</li> <li>Improve Accessibility and customer experience</li> </ul>	Jul 2021
	<b>Natick Center Station</b>	<ul style="list-style-type: none"> <li>New high-level platform and accessible routes to platforms</li> <li>Improved flood resiliency and operational flexibility</li> </ul>	May 2022
	<b>Mansfield Station (Providence Line)</b>	<ul style="list-style-type: none"> <li>Modernize station, repair platforms, and new signage</li> </ul>	Mar 2021
	<b>Iron Horse Park (Billerica)</b>	<ul style="list-style-type: none"> <li>Improve Accessibility and customer experience</li> <li>New RRO control center, provides redundancy</li> <li>Improve Safety &amp; Resilience, and on-time performance</li> </ul>	Oct 2021

# Commuter Rail: FY21 Q1 Snapshot (II/II)

Period	Project Name	Description / Benefits	Completion Date
<b>“Underway”</b> <i>In active construction</i>	Positive Train Control	<ul style="list-style-type: none"><li>Implement FRA-mandated system across rail network</li><li>Improve Safety &amp; Resiliency</li></ul>	Dec 2020
	North Side Automatic Train Control	<ul style="list-style-type: none"><li>FRA certified in Jun 2020, 100% of system complete</li><li>Install automatic train control signals on entire North Side commuter rail network</li><li>Improve capacity &amp; operations performance, and meet FRA requirements for PTC</li></ul>	Dec 2022
	Bi-Level Coach Procurement	<ul style="list-style-type: none"><li>83 coaches to replace 67 oldest single level coaches</li><li>+16 coaches to support South Coast Rail expansion</li></ul>	Summer 2024

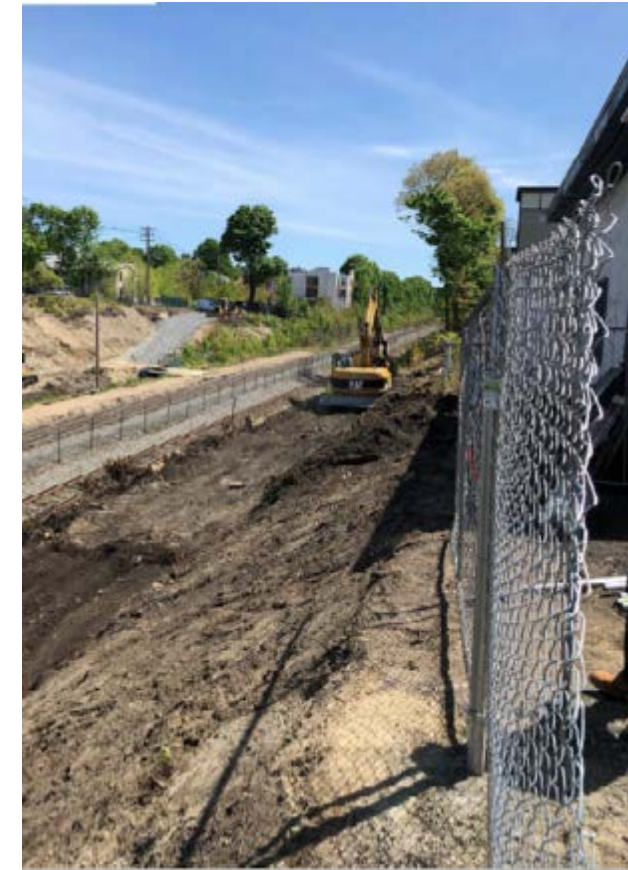
# Commuter Rail - Project Images of FY21 Q1 Work



**Ruggles Station Accessibility Improvements**  
New Side Platform Canopy



**North Station Track and Signal**  
Installation of 2 way conduits



**Natick Center Station Accessibility Improvements**  
Clearing and Excavation for  
Ramps 1 and 2

# Bridge: FY21 Q1 Snapshot

Period	Project Name	Description / Benefits	Completion Date
<b>“Completed”</b>  <b>“Underway”</b> <i>In active construction</i>	Dorchester Avenue Bridge Repairs	<ul style="list-style-type: none"> <li>Improve load carrying capacity to carry buses</li> <li>Improve Reliability and eliminate load restriction</li> </ul>	Sep 2020
	Robert St Bridge Replacement	<ul style="list-style-type: none"> <li>Replace structurally deficient bridge on Needham line</li> </ul>	Aug 2021
	Merrimack River Bridge	<ul style="list-style-type: none"> <li>Improve Reliability and asset conditions</li> <li>Design &amp; installation of scour protection</li> <li>Provide 500-year flood protection</li> </ul>	Mar 2021
	Gloucester Drawbridge	<ul style="list-style-type: none"> <li>Replacement of 110-year-old moveable structure</li> <li>Improve Reliability and eliminate speed restrictions</li> </ul>	Fall 2022
	Rail Bridge Replacements	<ul style="list-style-type: none"> <li>Design &amp; replace six bridges on Framingham, Haverhill, Newburyport/Rockport &amp; Lowell Lines</li> <li>Improve Reliability and asset conditions</li> </ul>	Jun 2022



## Bridge – Project Images of FY21 Q1 Work



### Dorchester Ave. Bridge Repairs

Typical Concrete Box Beam Repairs. Removal of deteriorated concrete shown above.



### Dorchester Ave. Bridge Repairs

Phase 3 Concrete Deck Overlay Rebar installation is shown with completed deck overlay from Phases 1 and 2 to each side., Aug. 16, 2020.



### Proof Load Test, Dorchester Ave. Bridge

Repairs completed on Aug. 28, 2020. Load test performed to provide load rating values for the bridge.



# Blue Line, Silver Line, Ferry & System-wide: FY21 Q1 Snapshot

Period	Project Name	Description / Benefits	Completion Date
“Completed”	Bowdoin-Airport Station Improvements	<ul style="list-style-type: none"><li>• Tactile strip, faregate overhaul, light renewal</li><li>• Improved Accessibility, Reliability, and safety</li></ul>	May 2020
“Underway”	Aquarium-Maverick Tunnel Improvements	<ul style="list-style-type: none"><li>• Replaced 4,514 ft of track, performed leak repairs</li><li>• Improve Reliability, safety, and customer experience</li></ul>	Nov 2020
“Underway”	Parking & Paving	<ul style="list-style-type: none"><li>• Replace 3 lots at Wellington (complete), W. Natick (complete), and Orient Heights</li></ul>	Dec 2020

Legend:

Blue

Silver

Ferry

System-wide

# Blue/Silver Line – Project Images of FY21 Q1 Work



Blue Line – Airport Rail



Courthouse Rendering



Blue Line Cable Removal





# Bus Program: FY21 Q1 Snapshot

Period	Project Name / Scope	Description / Benefits	Completion Date
"Completed"	Busway/Bus Facility Paving	<ul style="list-style-type: none"> <li>New paving at Ruggles Station</li> <li>Mill and Pave Cabot and Quincy Bus Garages</li> <li>Decreased maintenance, improved safety &amp; cust. Exp.</li> </ul>	Oct- Nov 2020
	Bus Overhaul	<ul style="list-style-type: none"> <li>Overhaul 155 of the 2008/09 40' bus fleet</li> <li>Improved reliability / maintainability / availability</li> </ul>	Fall 2020
"Underway" <i>In active construction</i>	Bus Lane Improvements	<ul style="list-style-type: none"> <li>Dedicated bus lane</li> </ul>	Dec 2020
	New Bus Procurement	<ul style="list-style-type: none"> <li>Delivery of 254 Enhanced Electric Hybrid 40' buses</li> </ul>	Winter 2020
	Rapid Response Bus Lane, Columbus Ave	<ul style="list-style-type: none"> <li>Replacement of aging unreliable diesel buses</li> <li>Construct center running bus lane along the Columbus Avenue</li> <li>Improve reliability, safety, accessibility, and customer experience</li> </ul>	June 2021
	Rapid Response Bus Lane, Various Locations	<ul style="list-style-type: none"> <li>Construct 15 miles of bus lanes in multiple municipalities</li> <li>Improve reliability, safety, accessibility, and customer experience</li> </ul>	Summer 2021
	New Bus Procurement	<ul style="list-style-type: none"> <li>Delivery of 254 Enhanced Electric Hybrid 40' buses</li> </ul>	Summer 2022
	Bus Stop Accessibility Improvements	<ul style="list-style-type: none"> <li>Replacement of aging unreliable diesel buses</li> <li>Construct accessible and safe bus stops at high priority locations</li> <li>Improve reliability, safety, accessibility, and customer experience</li> </ul>	Summer 2022



## Bus – Project Images of FY21 Q1 Work



Cabot Yard



Columbus  
Rendering



BHA  
Rendering



# South Coast Rail: FY21 Q1 Snapshot

Period	Project Name	Description / Benefits	Completion Date
“Completed”	Culverts	<ul style="list-style-type: none"> <li>Reconstruction of 46 culverts</li> <li>Construction of 5 wetland replication areas</li> </ul>	June 2020
	4 Bridge	<ul style="list-style-type: none"> <li>Cotley River Bridges reconstructed and restored to double track</li> <li>Cedar Swamp and Fall Brook Bridges constructed using accelerated bridge construction techniques</li> </ul>	Nov 2020
	Early Action Demolition	<ul style="list-style-type: none"> <li>Demolition of 12 structures at 10 sites</li> </ul>	Oct 2020
“Underway” <i>In active construction</i>	Special Trackwork	<ul style="list-style-type: none"> <li>57 turnout to replace existing turnouts and yards</li> </ul>	April 2021
	Fall River Secondary (FRS)	<ul style="list-style-type: none"> <li>Construct 2 stations and 1 layover facility</li> <li>Reconstruct 12 miles of track</li> <li>Reconstruct 8 bridges</li> <li>Upgrade 10 grade crossings</li> </ul>	Oct 2022
	Middleborough Secondary/New Bedford Main Line (MNB)/Systems	<ul style="list-style-type: none"> <li>Construct 4 stations and 1 layover facility</li> <li>Reconstruct 24 miles of track</li> <li>Upgrade 18 grade crossings</li> <li>Installation of Signal and PTC system</li> </ul>	Aug 2023



# South Coast Rail - Project Images of FY21 Q1 Work



**Culvert in Freetown**



**Demolition of Church Street, New Bedford**



**Weaver's Cove Layover Facility Site, Fall River**



# GLX - FY 21 Q1 Update

Period	Project Name	Description / Benefits	Completion Date
<b>“Completed”</b>	Final commuter rail track shift	<ul style="list-style-type: none"> <li>Final relocation of commuter rail track opened all work fronts for future Green Line infrastructure (stations, track alignment, substations, etc.)</li> </ul>	May 2020
	Washington Street Bridge reconstruction	<ul style="list-style-type: none"> <li>Complete reconstruction of Washington Street RR bridge completed 3 months ahead of schedule</li> </ul>	May 2020
	Broadway Street Bridge reconstruction	<ul style="list-style-type: none"> <li>Complete reconstruction required to widen rail corridor for GLX and existing Commuter Tracks</li> </ul>	June 2020
	Viaduct Steel Structure	<ul style="list-style-type: none"> <li>Represent final structural steel installation for GLX alignment (both Union Sq and Medford Branches)</li> </ul>	October 2020
<b>“Underway”</b> <i>In active construction</i>	Track installation throughout project limits	<ul style="list-style-type: none"> <li>Represents shift from heavy civil work (drainage, retaining walls) to rail systems construction</li> </ul>	May 2021
	Medford and School Street Bridge extensions	<ul style="list-style-type: none"> <li>Both bridges are being modified to allow Green Line tracks to proceed inbound</li> </ul>	May 2021
	Station construction at all 7 GLX stations	<ul style="list-style-type: none"> <li>Stations at varying degrees of completion with Lechmere and Union Square being furthest advanced</li> </ul>	August 2021
	Vehicle Maintenance Facility	<ul style="list-style-type: none"> <li>Transportation Building and Vehicle Maintenance Building to be enclosed by year's end.</li> </ul>	May 2021



## GLX– Project Images of FY21 Q1 Work



Final steel structure for GLX viaduct being installed (Oct 2020).



Project's Multi-Purpose Machine® delivering railbed material to the narrow corridor (Jan 2020).