



**Massachusetts Bay
Transportation Authority**

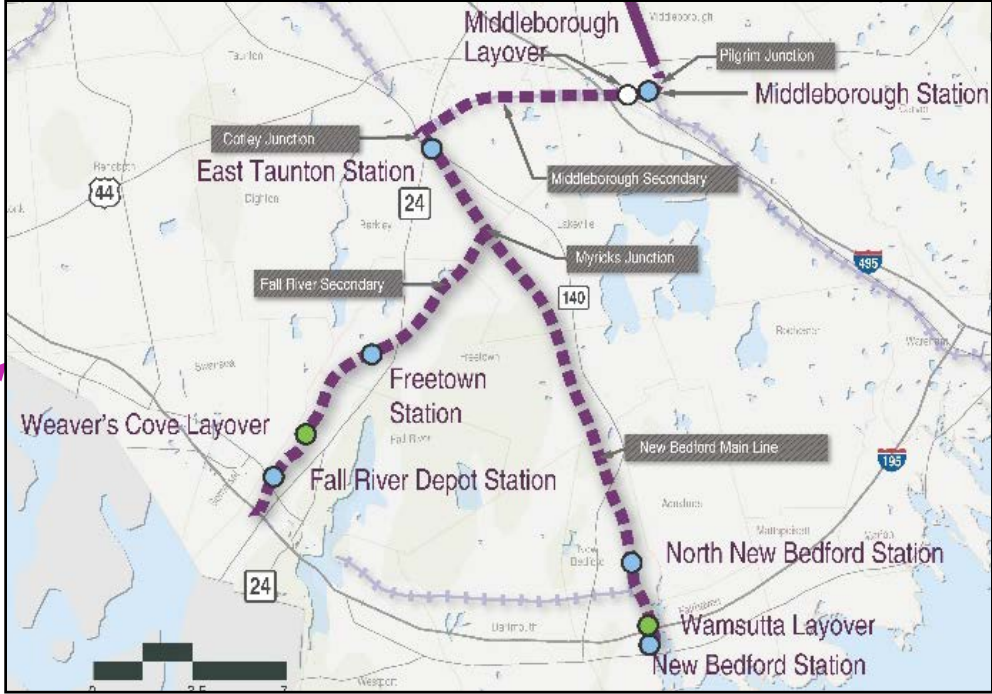
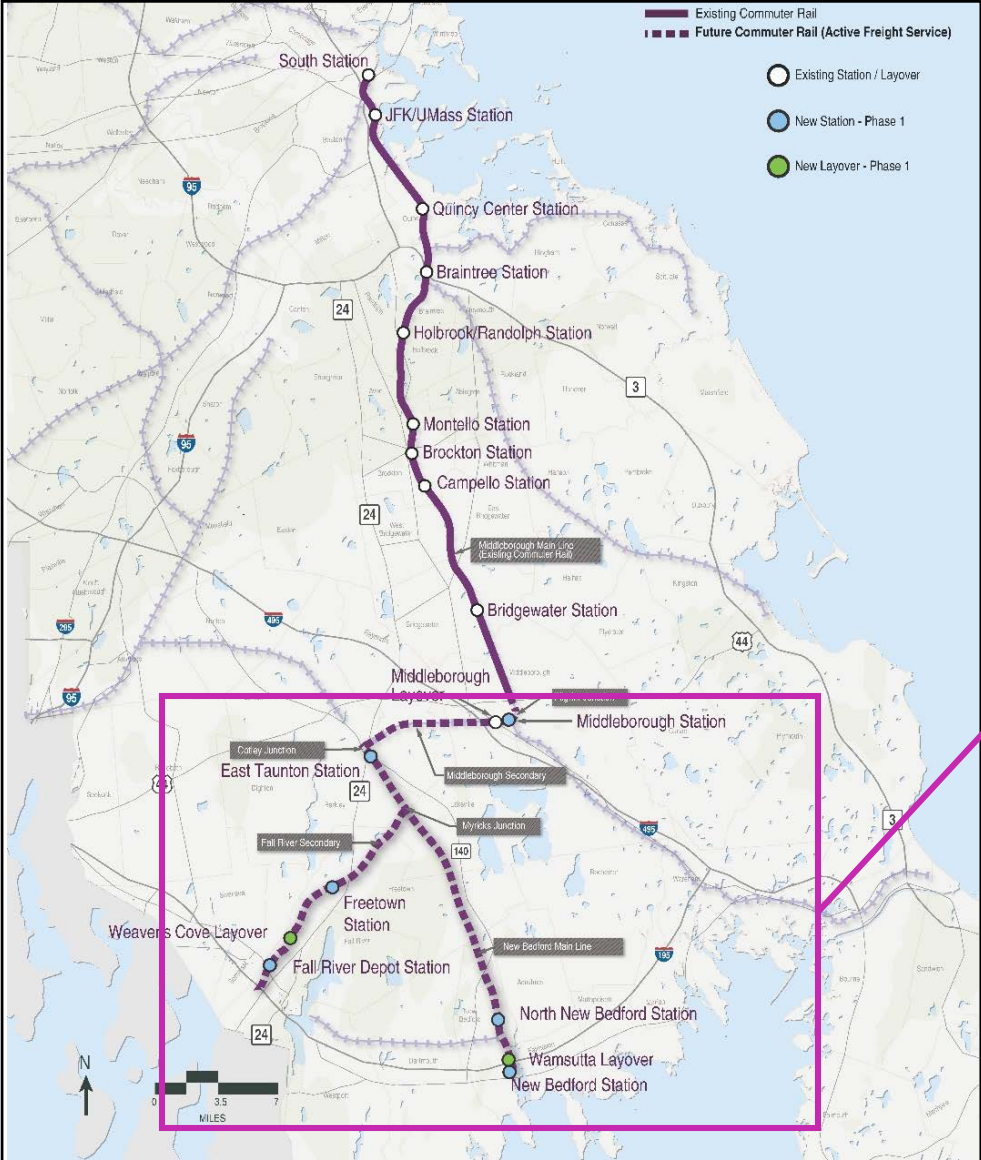
South Coast Rail Phase 1 Update

Joint Meeting of the MassDOT Board & Fiscal and Management Control Board

November 23, 2020

Jennifer Tabakin

South Coast Phase 1

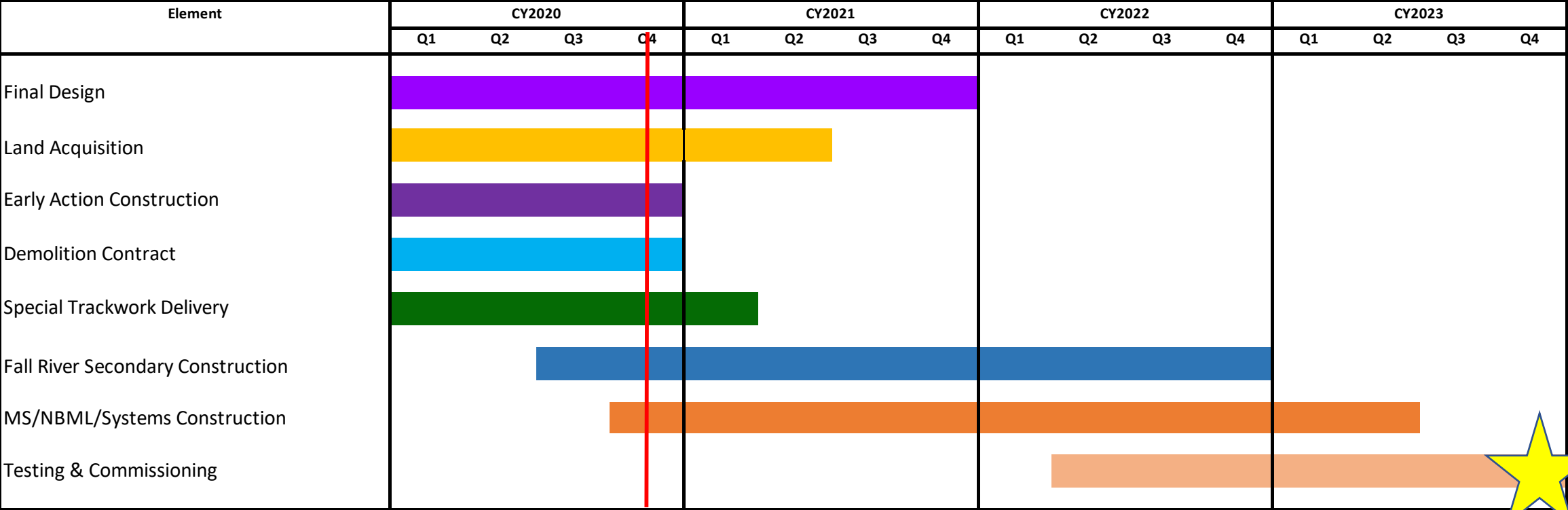


Fall 2020 - Quarterly Update

- **Early Action Demolition (K78CN02)** – D. W. White Construction completed demolition of 12 buildings on October 9, 2020.
- **Fall River Secondary (K78CN03)** – Skanska/D.W. White- Joint Venture has begun earth work, clearing of brush along the right-of-way, material stockpiling and initial survey work.
- **Middleborough Secondary/ New Bedford Mainline/Signals (K78CN04)** – SCR Constructors (Middlesex/Tudor Perini – Joint Venture) was given Notice-to-Proceed on October 15, 2020. Early submittals have begun to arrive.
- Track material procurement and purchase of bi-level coaches is ongoing.
- Design Phase work includes:
 - Traffic mitigation – design completion 2021
 - New Bedford Pedestrian Bridge – design completion 2021



Phase 1 Construction Schedule



Start of Service Goal
(Late 2023)



South Coast Rail Budget FY20 – FY25

SCR Budget– FY20-25	
Construction	\$650,997
Professional Services	119,669
Material Procurement	9,845
Vehicle Procurement	76,038
Noise Mitigation	11,529
Land Acquisition	21,061
Third Party Force Account	25,135
MBTA Proj Admin	22,000
Program Contingency	27,055
SCR FY20-FY25 Phase I TOTAL	963,329
Full Build Design FY21-FY25	88,662
SCR FY20-FY25 Ph 1 and FB TOTAL	1,051,982
SCR FY17-FY19	90,580
TOTAL	1,142,562



Construction– FY20-25	
DOT Culverts (projected)	\$19,579
DOT Four Bridges (projected)	23,797
Building Demolition (projected)	1,245
DOT Rt 24 Bridge	27,557
New Bedford ML / MS and Signals	403,470
Fall River Secondary	158,975
New Bedford Pedestrian Bridge	8,578
Traffic Mitigation	7,798
TOTAL	\$650,997



South Coast Rail Awarded Construction Contracts

Construction Award	Contractor	FY2019	FY2020	FY2021	FY2022
DOT Early Action Culverts	JF White	18.3			
DOT Four Bridges	JF White	22.6			
DOT Track Material	Progress Rail	9.6			
DOT Route 24 Bridge	TBD			27	
16 Bi Level Coaches	Hyundai Rotem		69.1		
Demolition	DW White		1.7		
Fall River Secondary	Skanska/DW White		159		
New Bedford / Middleboro	SCR Contractors (Middlesex/Tutor Perini)			403	
New Bedford Ped Bridge	TBD				8.7
Traffic Mitigation	TBD				7.8
Third Party Force Account	51 Utilities, 6 Railroads		4.3	14.6	5.5
TOTAL AWARDED		50.5	234.1	444.6	16.5

✓ \$690.6M in construction contracts and force accounts awarded to date.



Construction Contracts

Contract	Contractor	Estimate at Completion	Spending thru October 2020	Percentage Spent	Percentage Complete
46 Culverts	JF White	\$19,578,812	\$18,266,401	93.3%	95%
4 Bridge	JF White	\$23,796,968	\$20,392,862	85.7%	95%
Demolition	DW White	\$1,245,000	\$1,007,958	81.0%	95%
Fall River Secondary	Skanska/DW White	\$158,975,000	\$2,602,860	1.6%	3%
MS/NBML/Systems	SCR Constructors	\$403,470,002	\$0	0.0%	0%



South Coast Rail Construction Accomplishments

Early Action Culverts

- Substantial Completion (Contract Closeout)
- MassDOT Contract: 106341 – JF White (\$19.6M*)
- 46 Culverts

Early Action 4 Bridges

- Substantial Completion (November 2020)
- MassDOT Contract: 609200 - JF White (\$23.8M*)
- Locations:
 - Berkley:
 - Cotley River North
 - Cotley River South
 - Lakeville:
 - Cedar Swamp River
 - Freetown:
 - Fall Brook Bridge

*Estimated at completion

Early Action Demolition

- Substantial Completion (October 9, 2020)
- K78CN02 – DW White (\$1.2M*)
- Demolition of 12 structures at ten locations



Construction Accomplishments Photos



Demolition of Church Street, New Bedford
(Demolition Contract)



Cotley Bridge North
(4 Bridge Contract)



Demobilization from Culvert in Freetown
(Culvert Contract)



Fall River Secondary Construction

Scope

- 12.1 miles of track
- 2 new stations
- Layover facility in Fall River
- 8 bridges
- 10 grade crossings
- 10 culverts
- Infrastructure

Activities Underway

- Clearing and Grubbing
- Site Preparation at Weaver's Cove
- Earthworks at Weaver's and Freetown

Future Activities

- Retaining walls construction in Berkley
- Earthworks at Weaver's Cove and Freetown Station
- Fall season culvert construction at 3 locations
- 30 months of construction.



Fall River Secondary Construction Photos



Freetown Station
Skanska/DW White transported material to
Freetown Station

Weaver's Cove Layover, Fall River
Skanska/DW White mining soils.



Brightman's Lumber Crossing
Skanska/DW White receiving and stockpiling steel
sheeting at Adams's Lane in Berkley



Middleborough Secondary /New Bedford Main Line Construction

Scope

- 24.1 miles of track
- 4 new stations
- Layover facility in New Bedford
- 18 grade crossings
- 11 culverts
- Systems and infrastructure

Current Work

- Contractor is in the process of preparing 90 day look ahead schedule, QA/QC Plan and Baseline Schedule.

Schedule

- 39 months of construction, testing and commissioning.
- Notice to Proceed 1: Oct 15, 2020
- Notice to Proceed 2: Dec 15, 2020
- MS/NB Turnover: June 2023
- FRS Turnover: August 2023

Budget

- Contract Awarded: \$403M

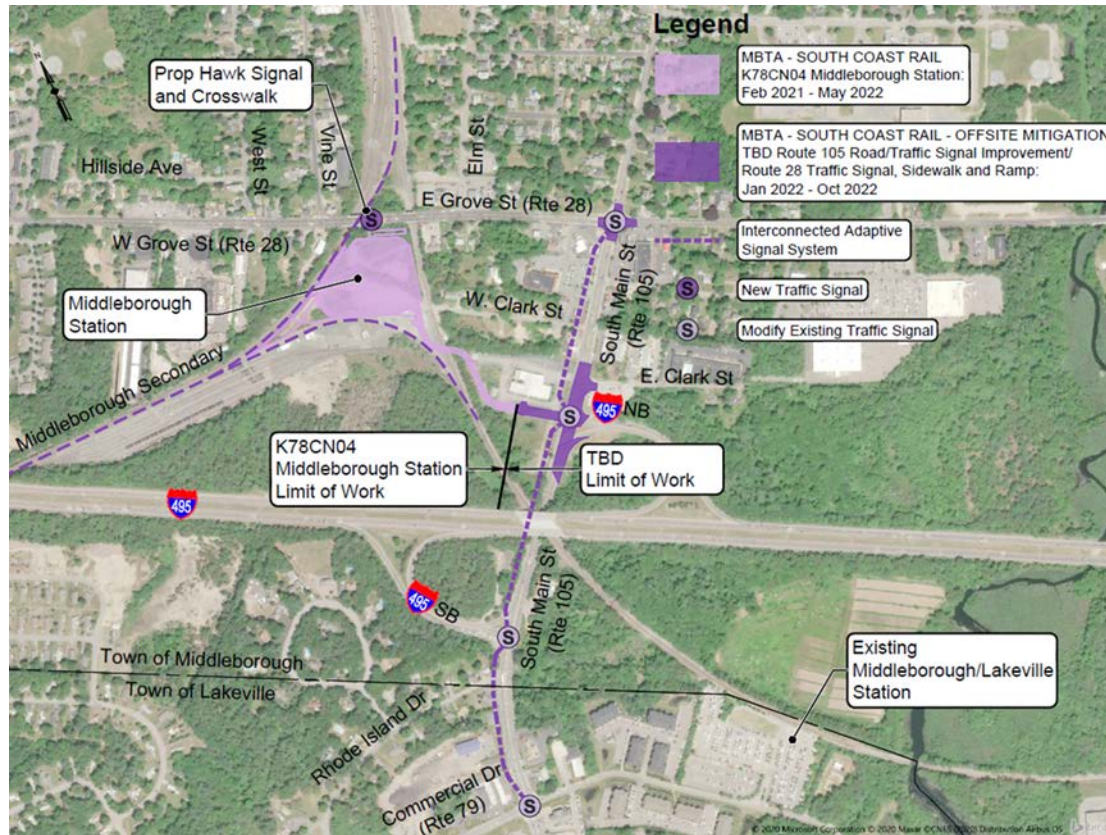


Utility Agreements

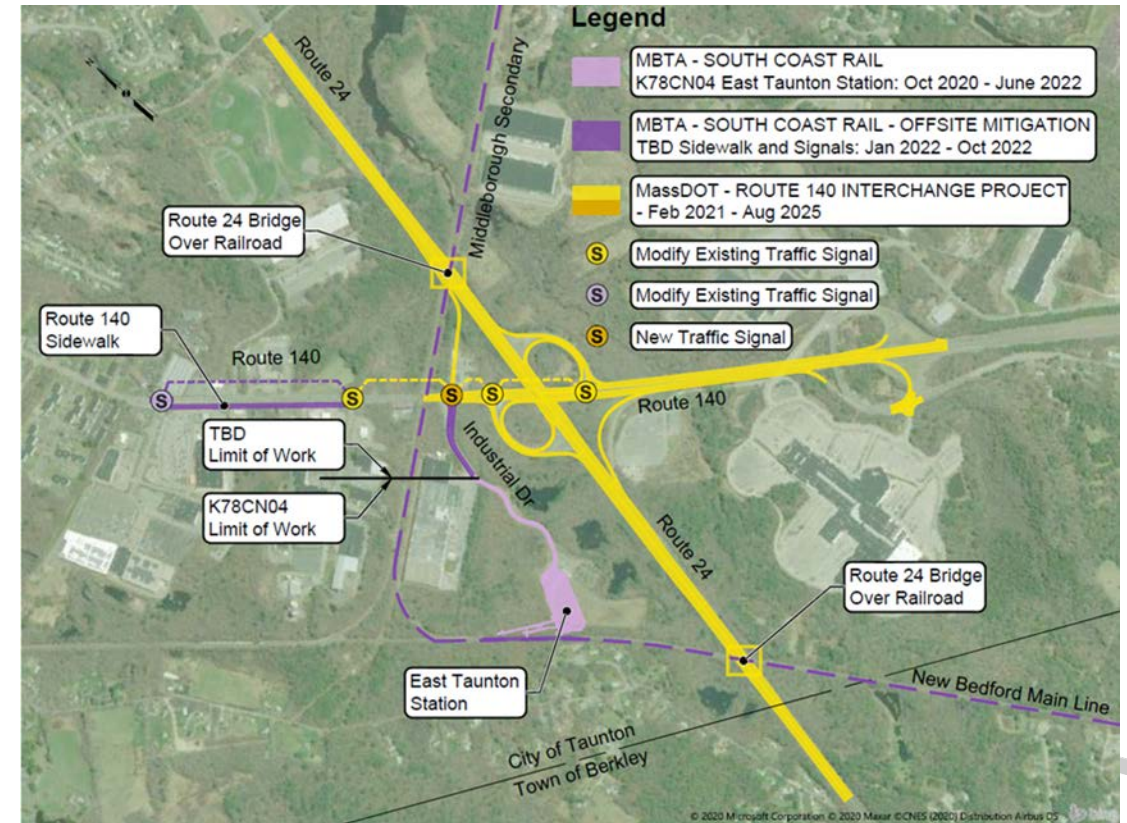
- Executed 51 separate relocation agreements
 - 20 different locations
 - 11 different utility companies
 - Includes: electrical, telecom & natural gas
 - \$2.6M in utility relocations
- Work improves clearance for grade crossing
- Completed or advancing work prior to major construction
- SCR is working with the following Utility Companies
 - National Grid
 - Eversource Electric
 - Eversource Gas
 - Liberty Utilities
 - Taunton Municipal Lighting Plant (TMLP)
 - Middleborough Gas & Electric (MGED)
 - Verizon
 - Comcast
 - Crown Castle
 - City of New Bedford Department of Public Infrastructure (NBDPI)
 - City of New Bedford Department of Facilities & Fleet Management (NBDFFM)



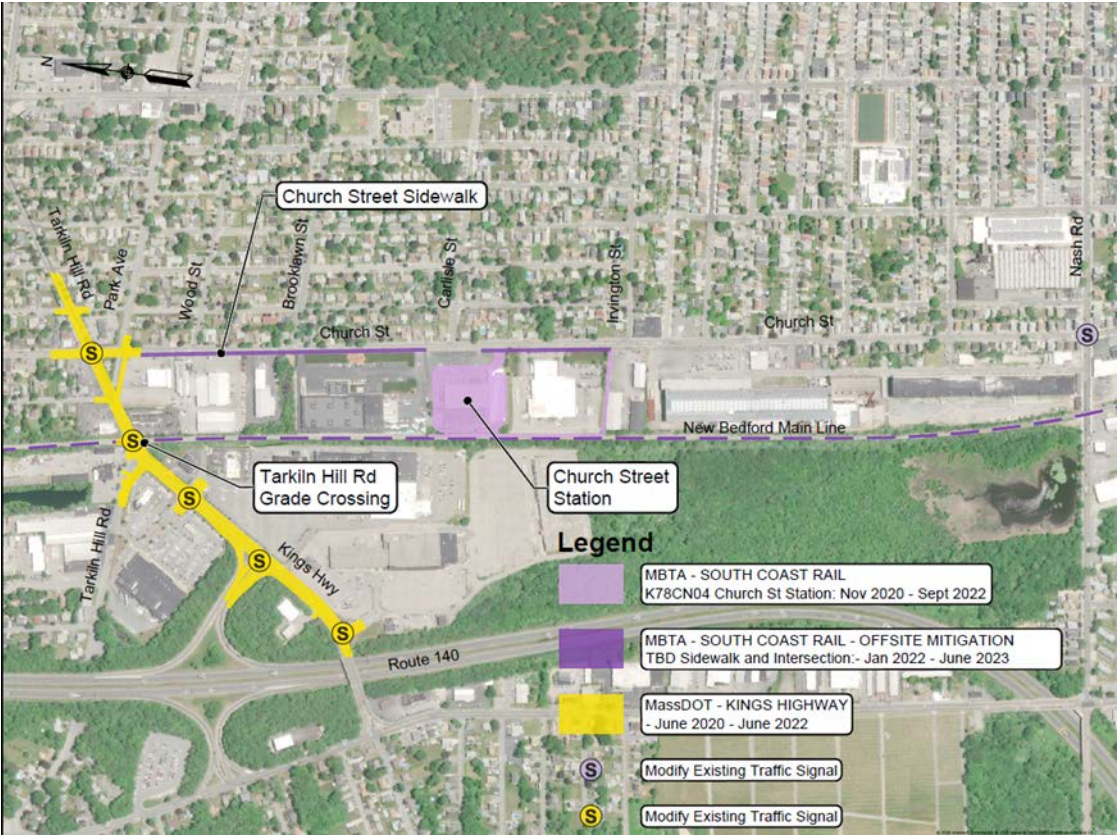
Middleborough Station



East Taunton Station – Route 24/140



New Bedford – Church Street Station



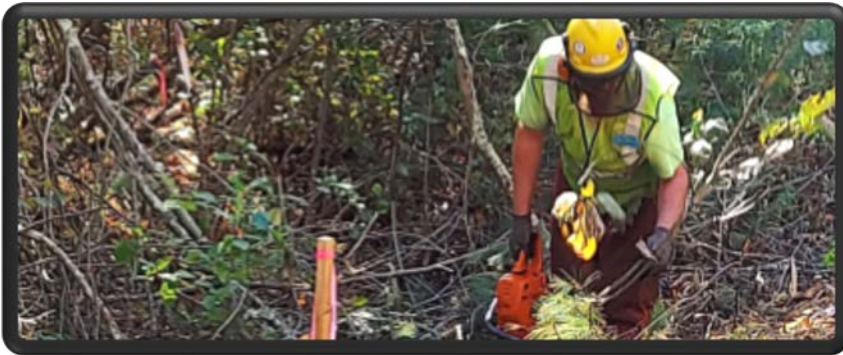
New Bedford – Wamsutta Layover/New Bedford Station



Fall River – Fall River Depot Station



South Coast Rail Project Web Site: www.mass.gov/southcoastrail



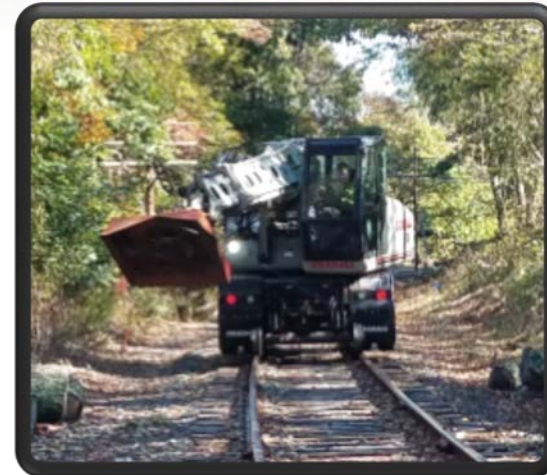
Brightman's Lumber Crossing, Freetown



Weavers Cove Layover, Fall River



Weaver's Cove Layover, Fall River



Adam's Lane Berkley, to Lumber Crossing
Freetown



Appendix



South Coast Rail Authorized Funds

SCR Funding – MBTA and DOT		
FMCB Approval	Interagency Service Agreement Funding	Funds Authorized
1/24/19	SCR MBTA Phase I and FB Design (S19001)	862,750,000
1/24/19	<i>Construction (S19001 Am2)</i>	632,750,000
11/13/19	<i>Professional Services (S19001 Am1)</i>	122,000,000
5/7/19	<i>CM/PM, Force, land, admin (S19001 base)</i>	108,000,000
11/27/19	SCR 16 Coaches (S2001)	69,037,292
6/30/14	SCR Early Design (S15001)	27,094,942
8/1/2015	Owner Rep (S15004)	10,000,000
	MBTA Project Administration	20,000,000
MBTA Authorized Funds		\$988,882,234
DOT SCR Committed Funds		\$153,679,000
SCR TOTAL Authorized		\$1,142,562,348



SCR Capital Spending Plan FY20 – FY25

SCR Capital Spend Plan

Fiscal Year 20	83,564
Fiscal Year 21	132,870
Fiscal Year 22	354,216
Fiscal Year 23	360,947
Fiscal Year 24	91,304
Fiscal Year 25	29,081
Total	\$1,051,982

SCR MBTA

Fiscal Year 20 (Actual)	35.10
Fiscal Year 21	113.40
Fiscal Year 22	347.30
Fiscal Year 23	354.40
Fiscal Year 24	84.40
Fiscal Year 25	22.20
Total	956.8

SCR Mass DOT

Fiscal Year 20 (Actual)	48.50
Fiscal Year 21	19.30
Fiscal Year 22	6.90
Fiscal Year 23	6.90
Fiscal Year 24	6.90
Fiscal Year 25	6.90
Total	95.40



