



[www.mass.gov/southcoastrail](http://www.mass.gov/southcoastrail)



# **South Coast Rail - Phase 1 New Bedford Stations Virtual Listening Session**

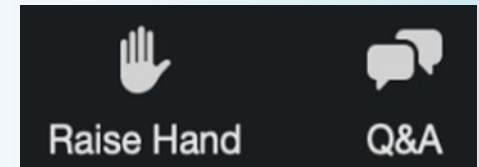
*September 22, 2020*



**Massachusetts Bay  
Transportation Authority**

## Public Comment after the Presentation

- Please share only one question or comment at a time
- Press the **RAISE HAND** button to share your question or comment verbally. Wait for the moderator to recognize you and unmute you before speaking.
- Use the **Q&A** button to submit a typed question or comment.
- Attendees who speak Spanish or Portuguese must raise their hands to provide comments or questions verbally for the interpreters to hear you.



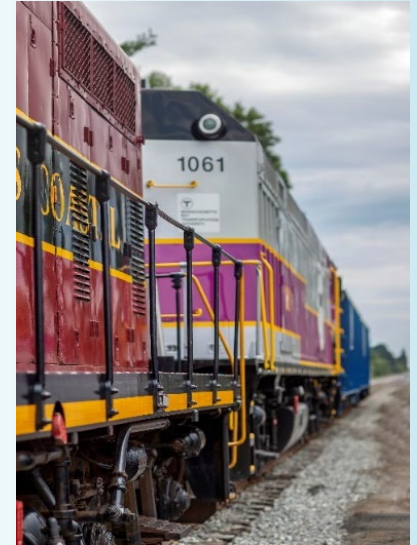
*Tech issues?*  
*Call 508-443-4045*

# Welcome to the Listening Session

- Agenda
  - Welcome and update on South Coast Rail Phase 1 construction
  - Information about two New Bedford Stations and one Layover facility
  - Public comment and questions
- Notes
  - The session is being recorded and will be posted for those who can't join us tonight
  - Comments can also be sent to [SouthCoastRail@dot.state.ma.us](mailto:SouthCoastRail@dot.state.ma.us)

## Overview: Recent Project Milestones

- Phase 1 service is fully funded and planned for the end of 2023; it includes new stations in Middleborough, East Taunton, Freetown, Fall River Depot, Church Street and New Bedford
- The MBTA awarded the Fall River Secondary construction package to Skanska DW White JV for nearly \$159M; the Middleborough Secondary, New Bedford Main Line and Systems contract was awarded to the Joint Venture of SCR Constructors for \$403.5 million (The Middlesex Corporation and Tutor Perini)
- Construction will begin before the end of 2020



## Early Demolition and Early Action Contracts

- \$1.7M demolition contract was awarded to DW White Construction of Acushnet
- Work was scheduled at nine sites
- New Bedford sites included a Church St. property
- Early demolition will be completed in November 2020
- Early action work is nearly complete including replacing culverts and four railroad bridges

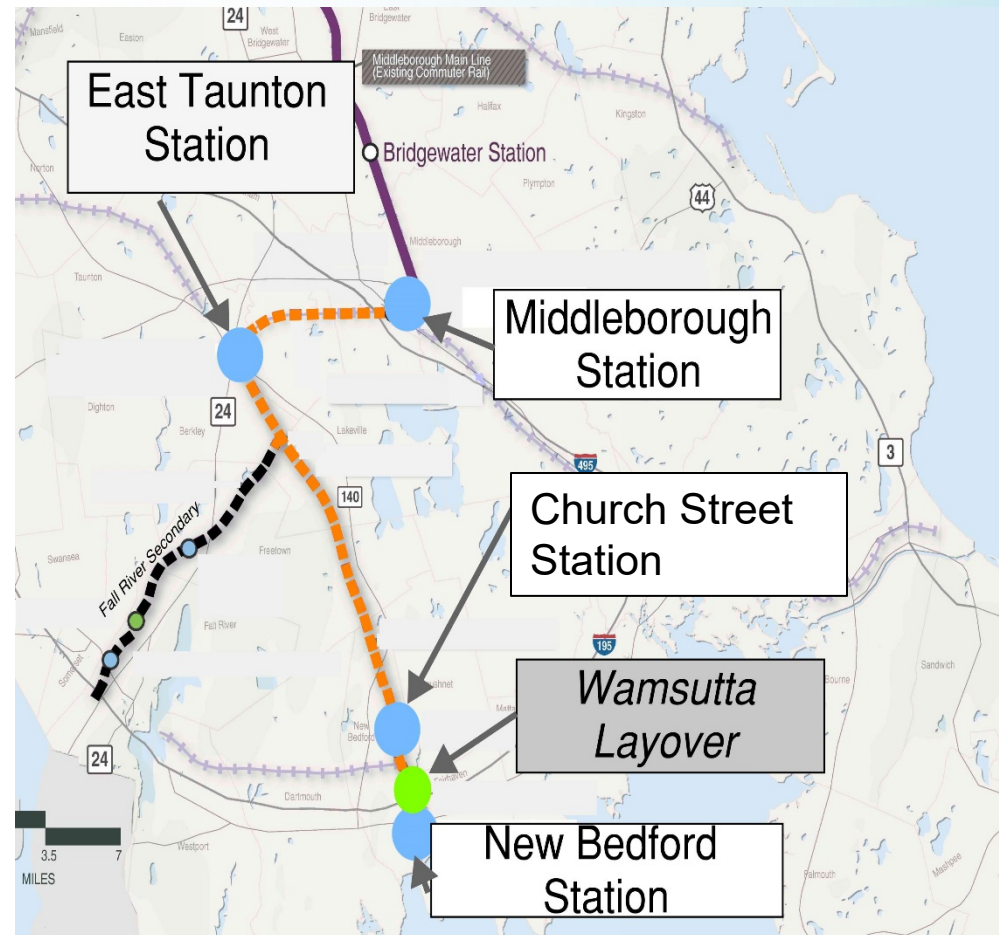


*Top: demolition at Church Street;  
Bottom: railroad bridge replacement construction*



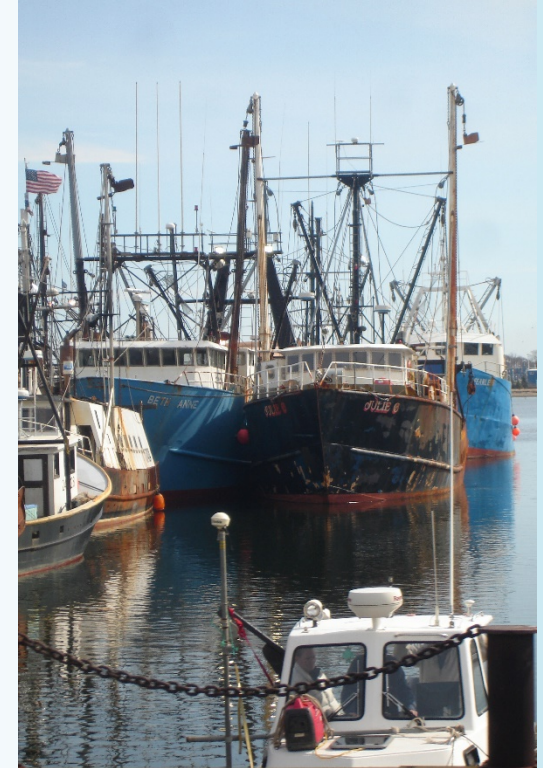
# Elements of the New Bedford Main Line Package

- 24.1 miles of track
- 4 new stations
- 1 layover (Wamsutta)
- 18 grade crossings
- 11 culverts
- Systems installation
- Positive Train Control
- Test/Commissioning
- Safety certifications



## Two Stations: Church Street and New Bedford

- Serve both residential and business districts
- Provides improved access to the Working Waterfront
- Multimodal connections planned at both stations
- Will foster new development
- Gateway to downtown and tourist areas



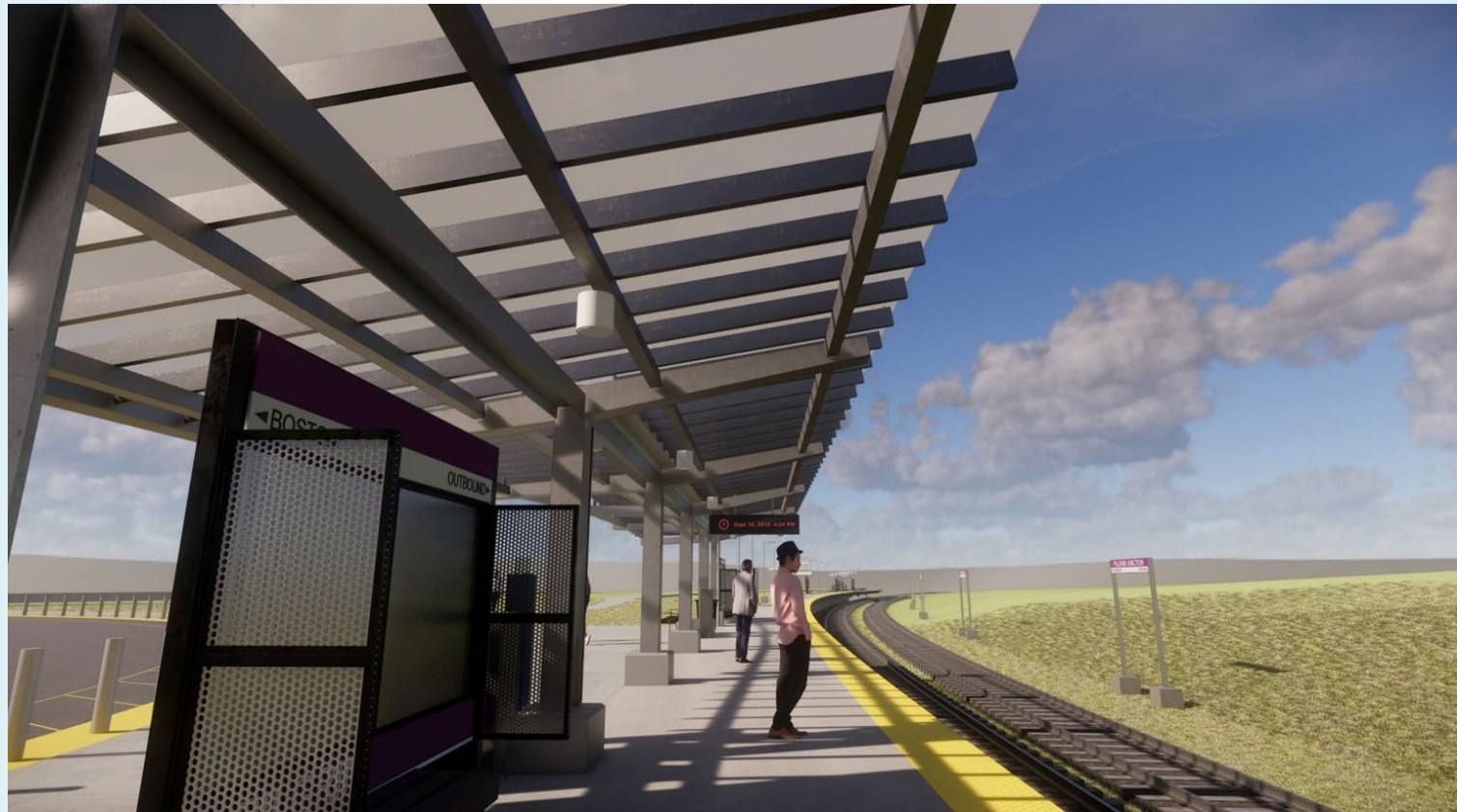
## Church Street Station

- Located at 387 Church Street, New Bedford
- Features a landscaped area fronting on Church Street
- Supported by the City's Transit Oriented Development Study with SRPEDD, the regional planning agency, and public input on ideas about housing, business development and transportation
- Station includes an 800 ft platform with a canopy, drop off area, parking and pedestrian and bicycle access

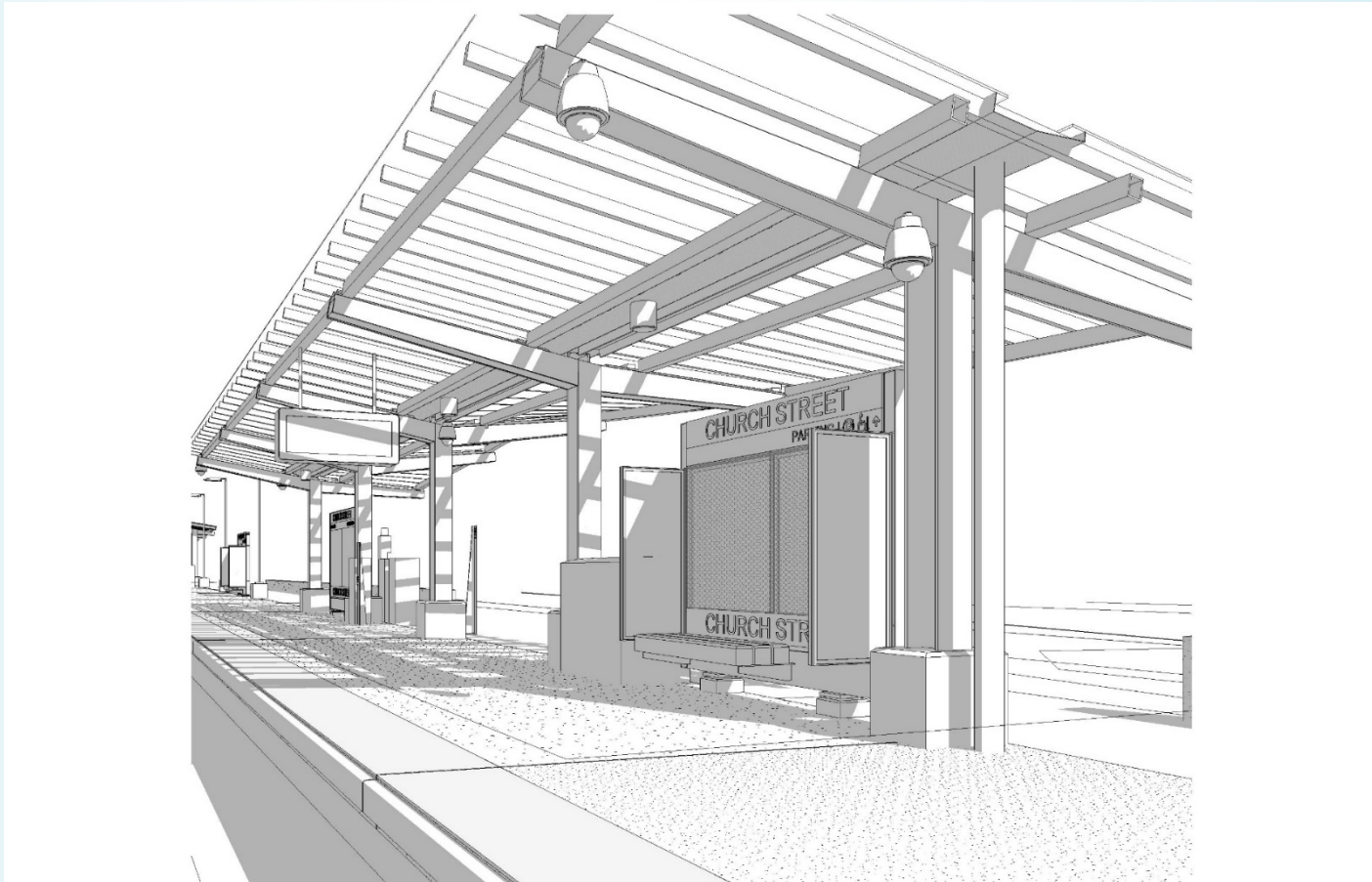


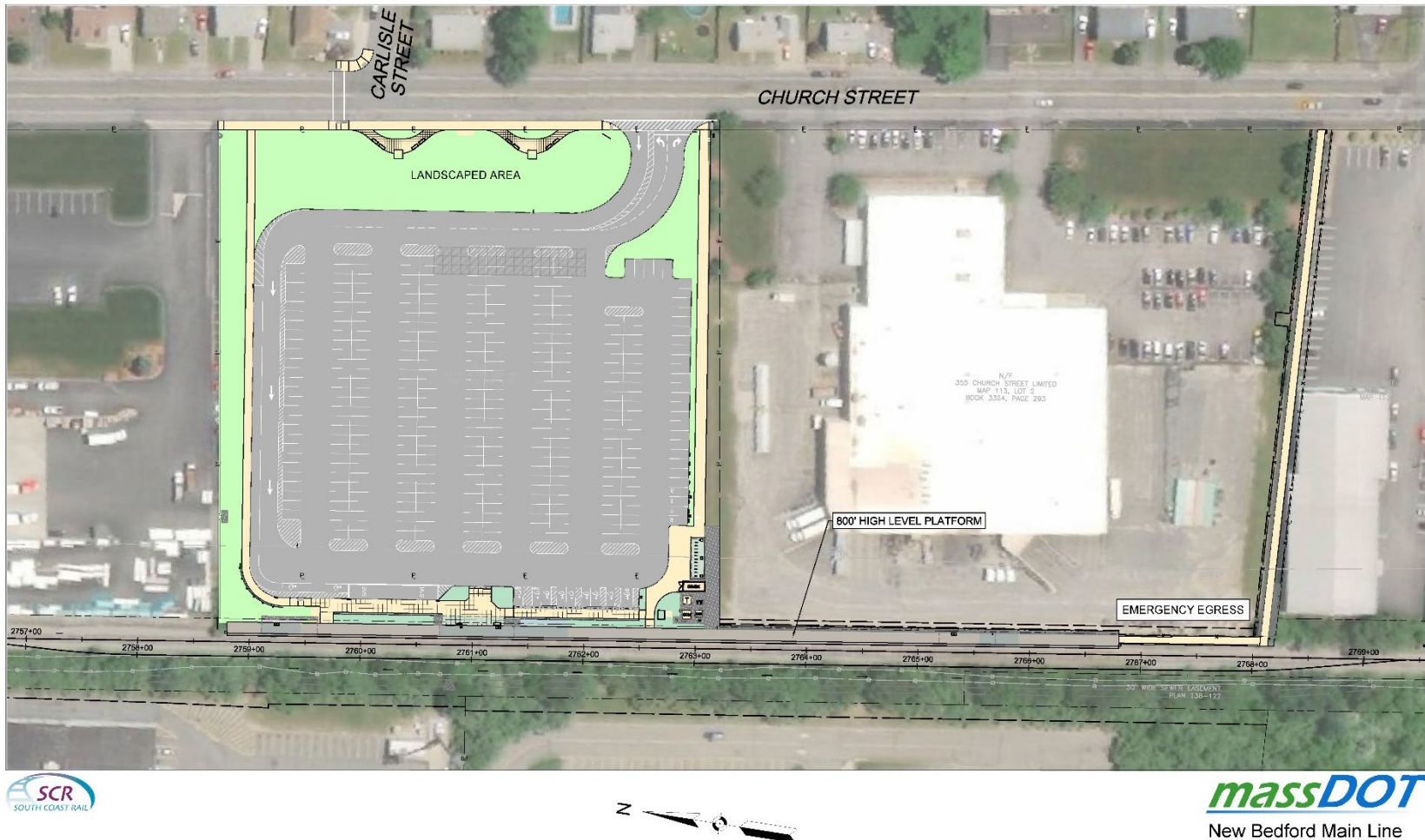


# Church Street Station Platform Rendering



# Church Street Station







## Church Street Station – Details

- Neighborhood connections and landscaped area on Church Street
- Access from Church Street for vehicles, bikes and pedestrians
- Emergency egress provided from the south end of the platform
- Parking spaces – 355; bike parking - 22; accessible and EV parking
- 800' platform with a 182' canopy
- Bus stop and drop off space

# Roadway Access and Improvements

- 40% of ridership is west of station; 60% is east of it
- Pedestrian crossing at Church Street and Carlisle Street
- Upgrading traffic signals at Church Street and Nash Road
- Reconstructing 2800' of sidewalk on west side of Church Street from Tarkiln Hill Rd. to the station driveway



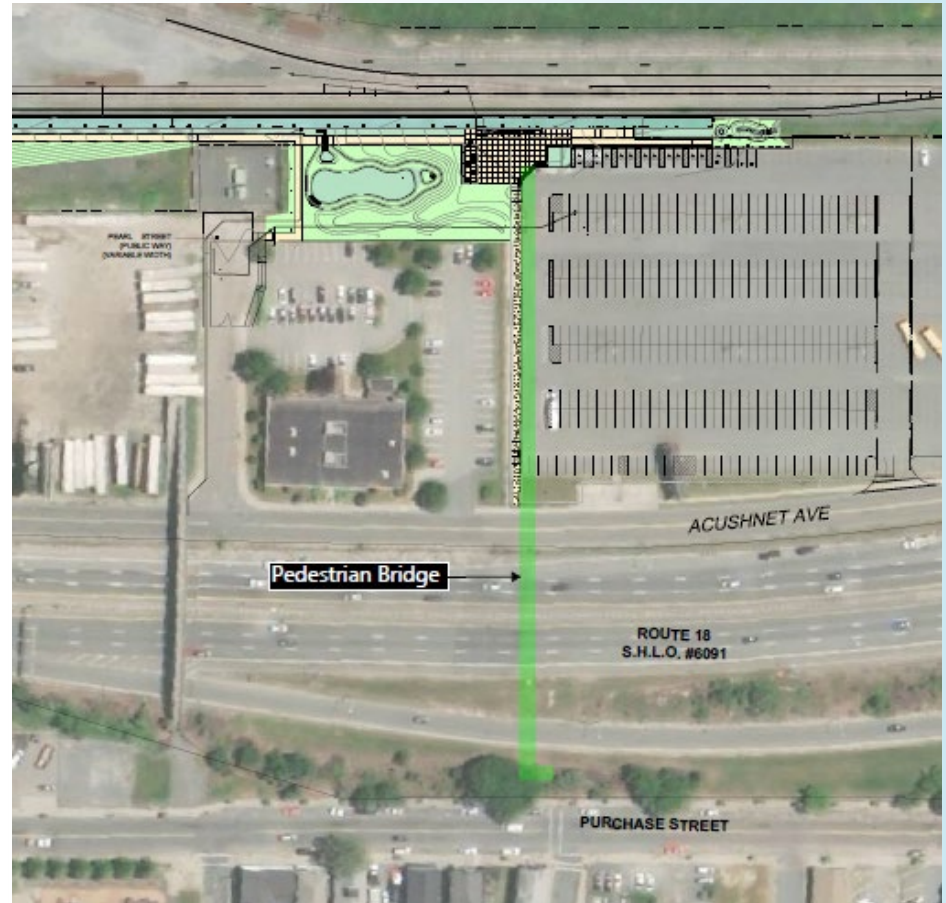


## Traffic Studies

- Original 2013 study updated with new traffic counts (seasonal variations, crashes, and traffic conditions) as well as 2030 no build and build conditions
- Parking demand was estimated for 260-270 daily boardings; 350 parking spaces are proposed
- Similar impacts are still anticipated
- More pedestrian and bicycle trips are expected due to the new location

# New Bedford Station

- Acushnet Avenue parking lot entrance provides access to the station for vehicles and pedestrians
- Sidewalk from Acushnet Avenue provides pedestrian access to the station
- Pedestrian Bridge over Route 18
- Parking spaces – 352
- Shared parking



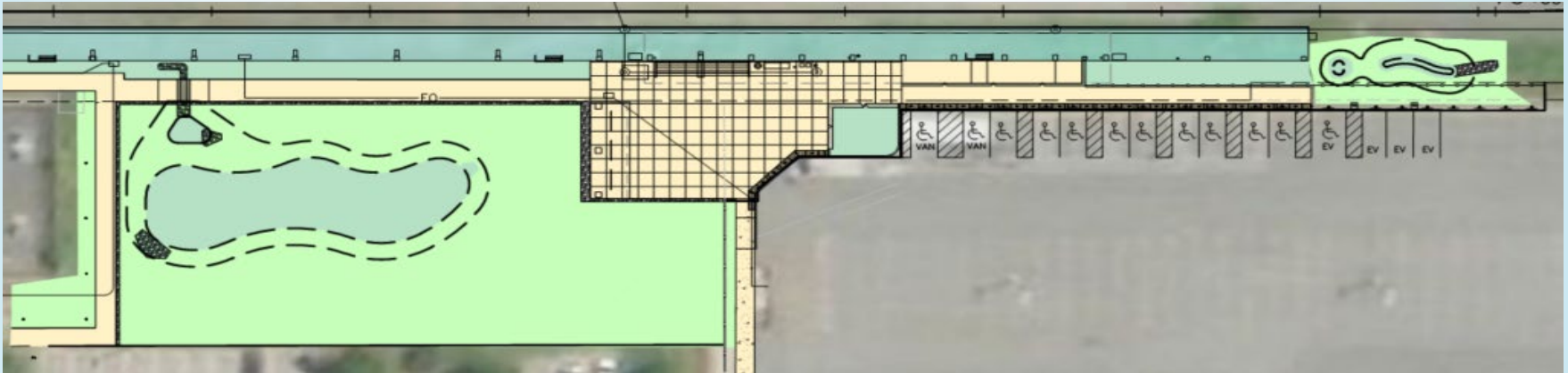
# New Bedford Station Platform Rendering







# New Bedford Station Programming



## Elements

- 800' platform
- Platform canopy 167'
- 22 bike park spaces
- Accessible drop-off / pick-up
- Bus Stop on Acushnet Ave

## Accessible Parking

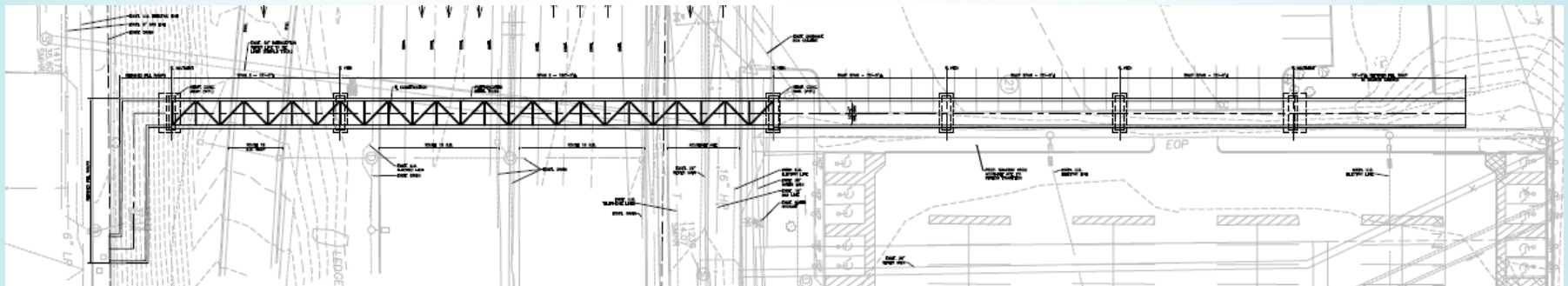
- 8 required, 11 provided accessible parking spaces
- +1 accessible EV charging space

## Electric Vehicle Charging

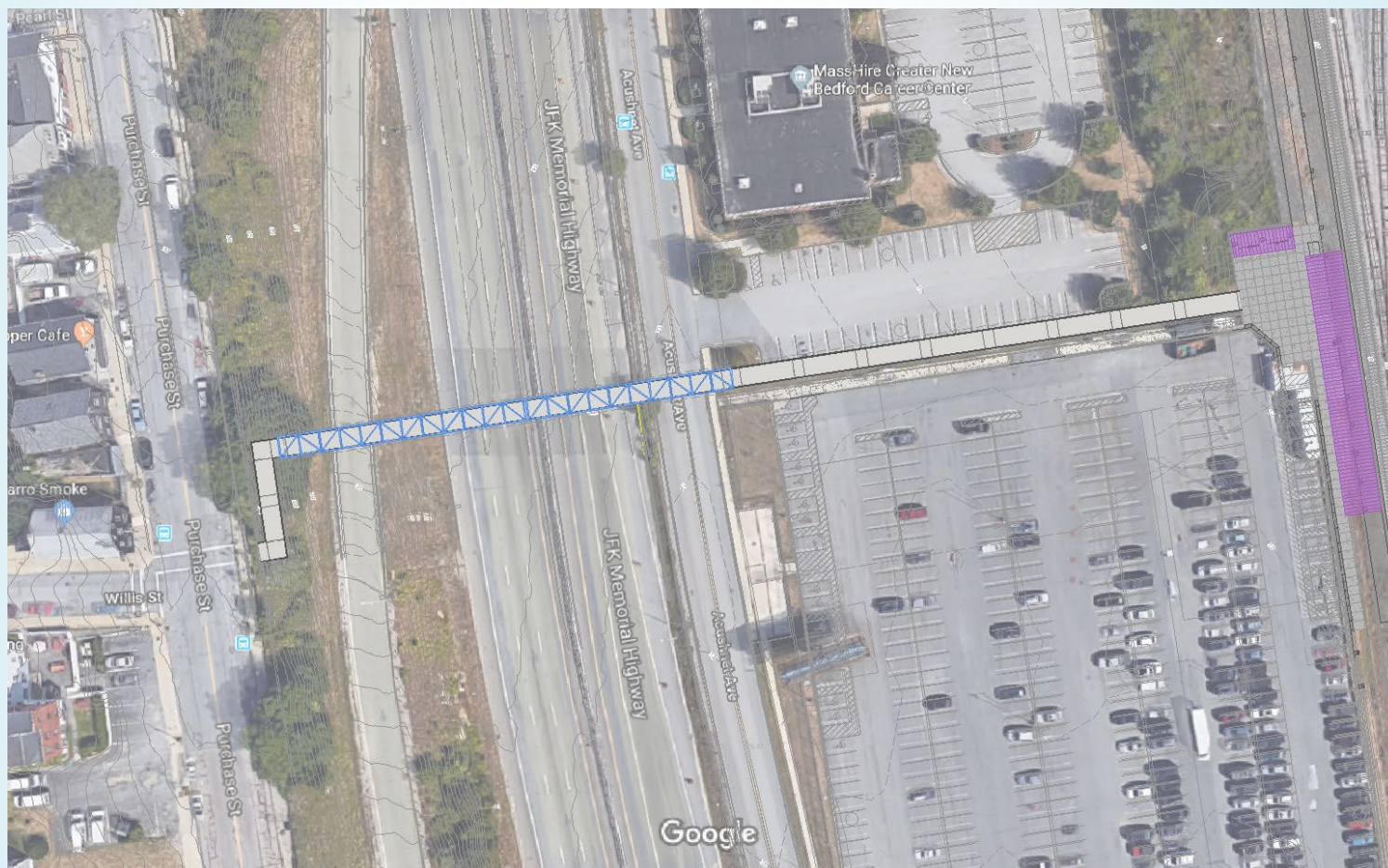
- 3 EV charging spaces



# Pedestrian Bridge over Route 18

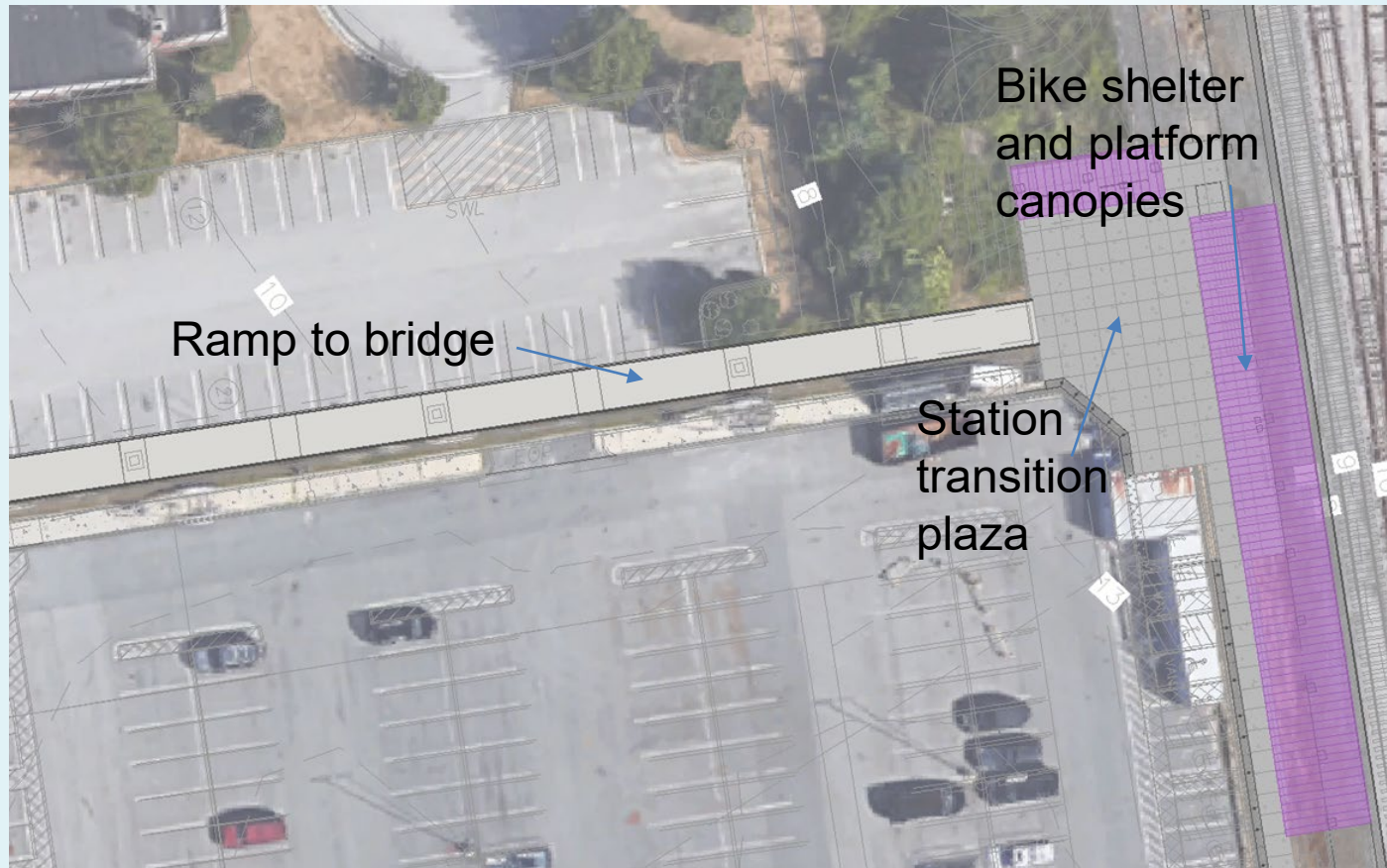


# Pedestrian Bridge Connections

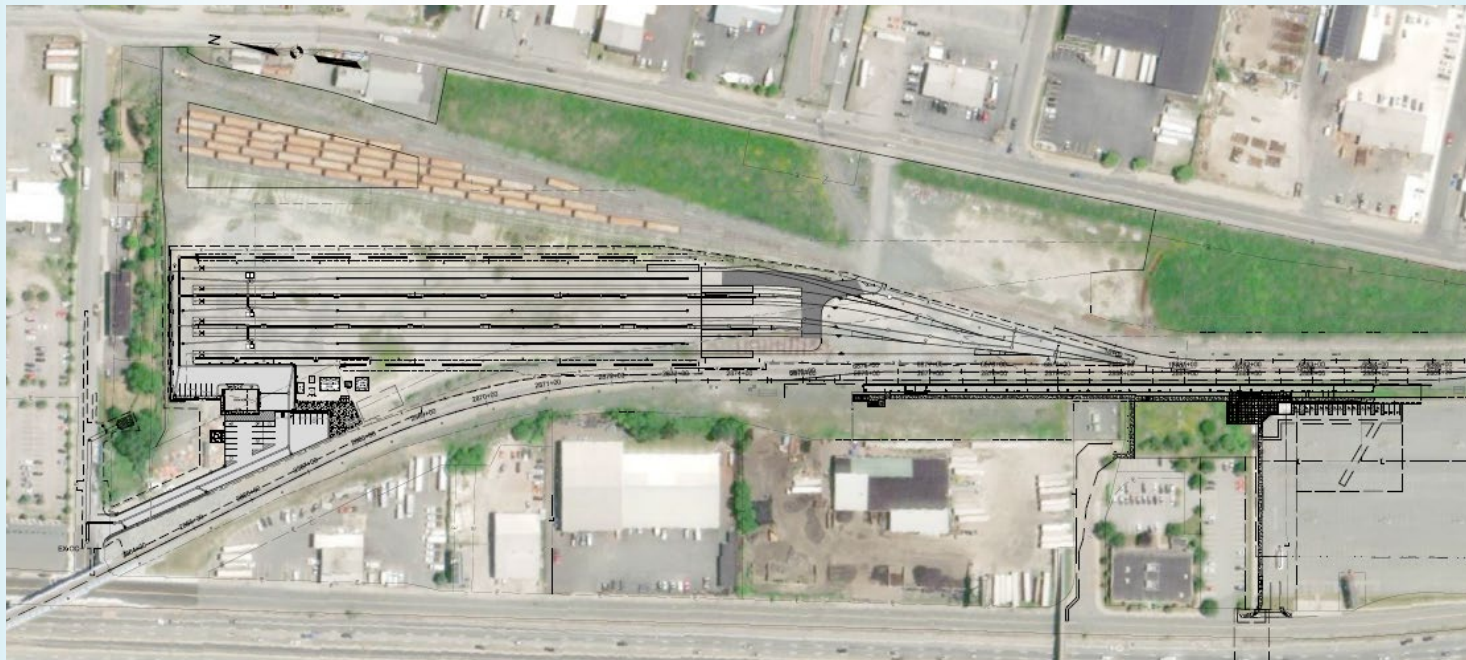




## Transition Plaza Approach



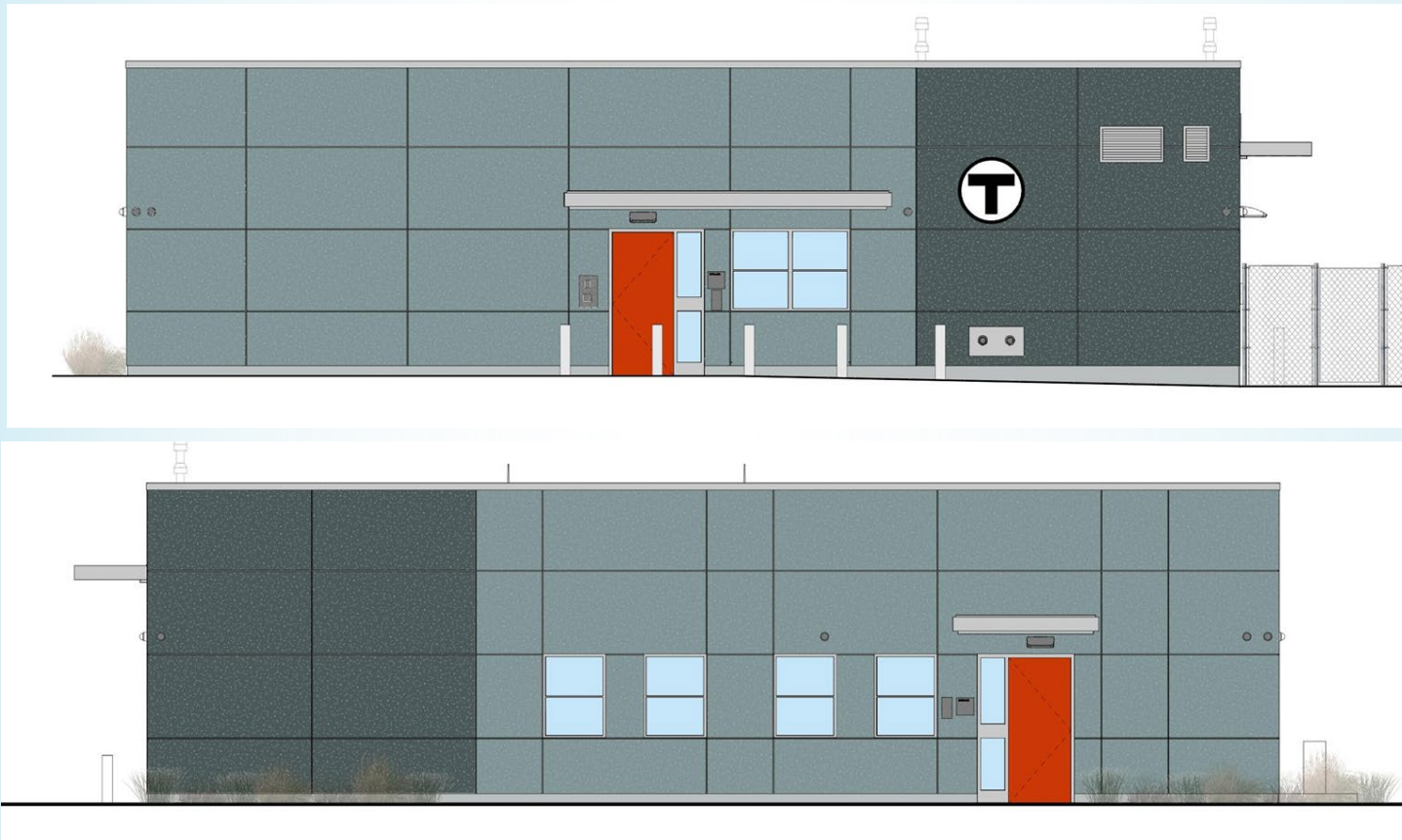
# Wamsutta Layover Facility



Train storage overnight, includes facilities for crew, cleaning and fuel only; adjacent freight handling will continue to operate

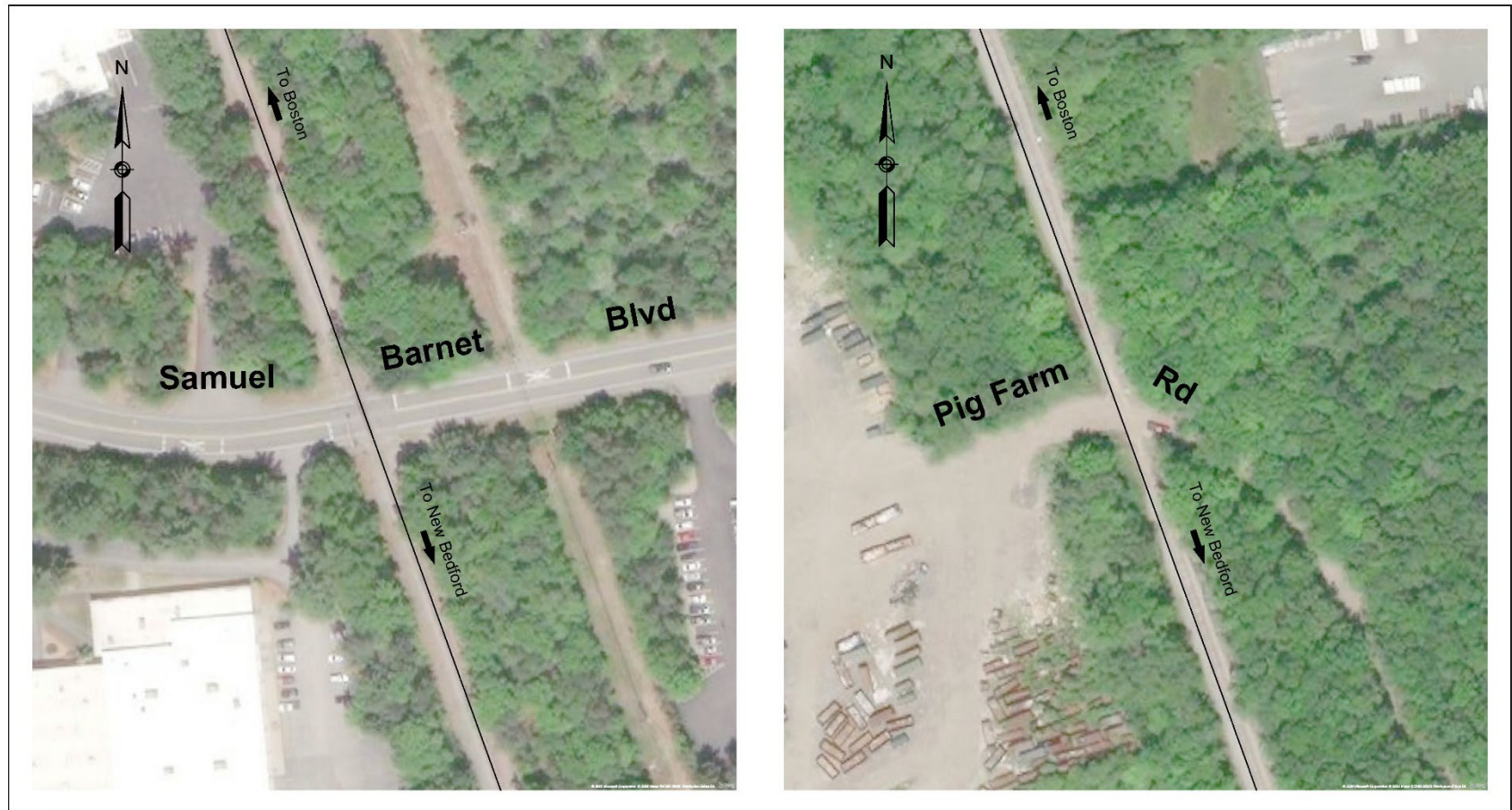
- 6 Tracks
- Crew quarters
- Employee parking
- Gated facility

## Wamsutta Crew Quarters

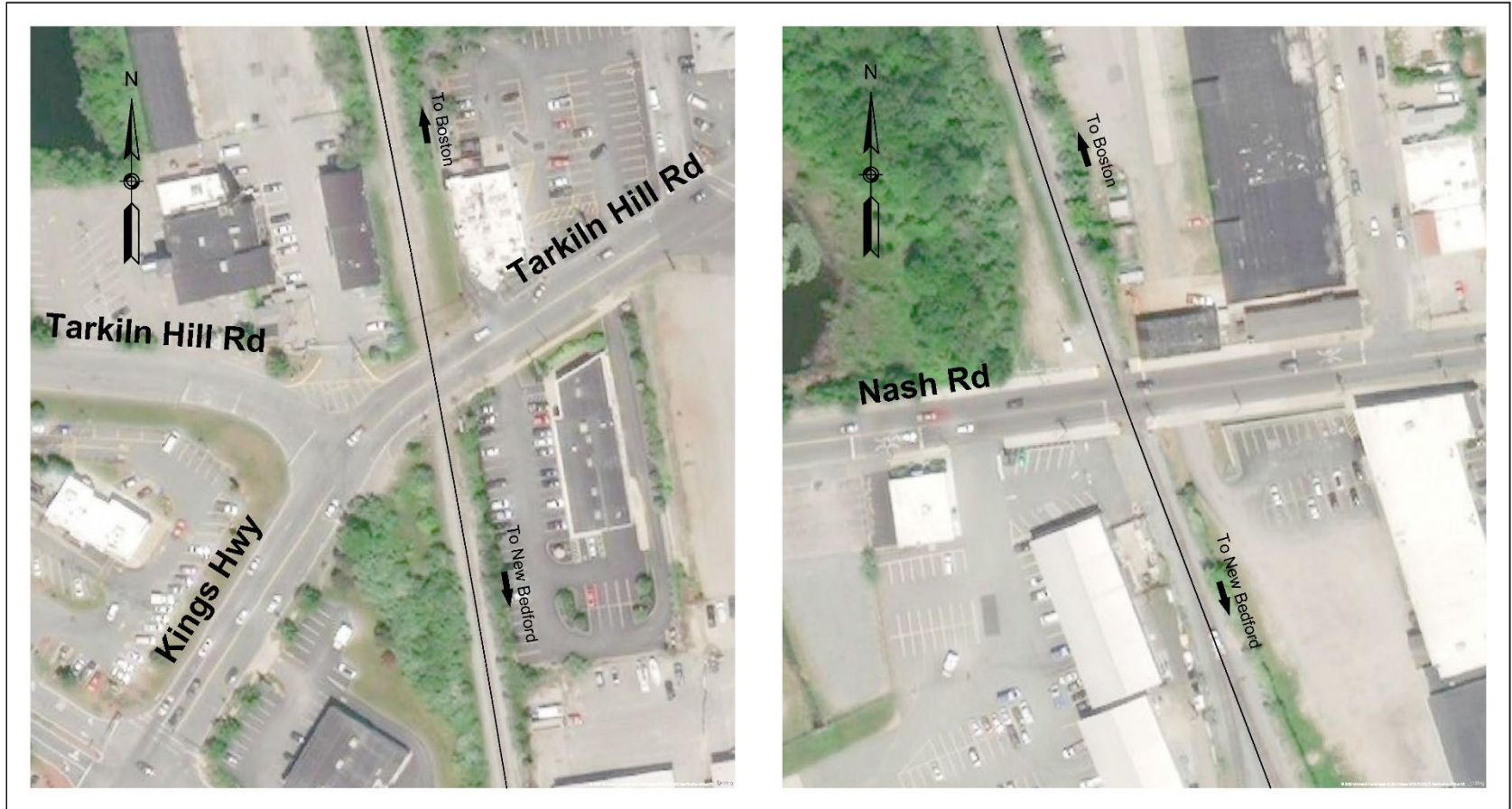




## Grade Crossings: Samuel Barnet Blvd & Pig Farm Rd



## Grade Crossings: Tarkiln Hill Rd & King's Hwy & Nash Rd



## SCR Benefits

- Thousands of construction and net new jobs expected
- Opens the housing market
- Boosts economic vitality & job opportunities
- Improved freight infrastructure
- Station area development potential
- Savings in travel costs, accessibility to jobs & gains in business and labor productivity
- Connections to tourism, education and health care
- Maintains access to the Port of New Bedford





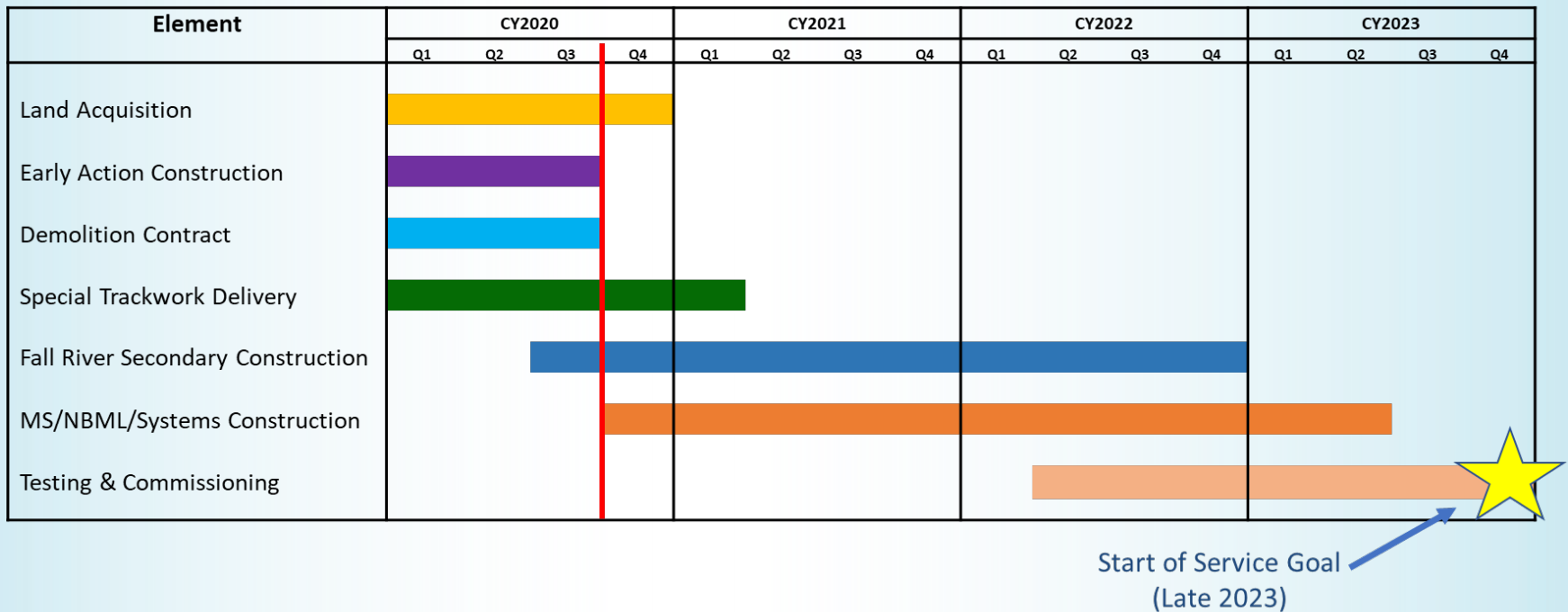
## MBTA and City of New Bedford Coordination

Regular coordination with the City on issues, including:

- Tarkiln Hill/King's Highway Crossing
- Design of a Pedestrian Bridge over Route 18 to New Bedford Station
- Traffic mitigation program
- Construction coordination



# Phase 1 Schedule





## How to Follow SCR

- Visit the project website and sign up for updates and construction information:  
[www.mass.gov/southcoastrail](http://www.mass.gov/southcoastrail)
- Send us comments at  
[SouthCoastRail@dot.state.ma.us](mailto:SouthCoastRail@dot.state.ma.us)
- Participate in the Transit Oriented Development planning at [www.srpedd.org/New-Bedford-TOD-Study](http://www.srpedd.org/New-Bedford-TOD-Study)





## NEW BEDFORD TRANSIT-ORIENTED DEVELOPMENT (TOD) STUDY

*Planning Around the Rail*

ESTUDIO DE PLANIFICACION DEL ÁREA DE LA ESTACIÓN

*Planificación Alrededor del Ferrocarril*

ESTUDO DE PLANEAMENTO DE TRÁFEGO, TOD

*Planeamento de transporte ferroviário*

# ***You're Invited! Come Join the Discussion!***

**SAVE THE DATE  
RESERVA LA FECHA  
RESERVE A DATA**

### **PUBLIC MEETINGS / REUNIÓN PÚBLICAS / REUNIÃO PÚBLICAS**

**When / Cuando / Quando:**

**Saturday - October 17, 2020 - 10:00 AM to 12:00 PM**

**Wednesday - October 21, 2020 - 6:00 PM to 8:00 PM**

**Where / Dónde / Onde:**

**Online only / Solo online / Apenas online**

**[www.srpedd.org/New-Bedford-TOD-Study](http://www.srpedd.org/New-Bedford-TOD-Study)**

## **Questions/Comments?**

**Email:**

**[nbtodstudy@gmail.com](mailto:nbtodstudy@gmail.com)**

**Call/Text Line:**

**508-293-1280**



**Project Website**

[www.srpedd.org/New-Bedford-TOD-Study](http://www.srpedd.org/New-Bedford-TOD-Study)

Scan the QR Code with your smart phone



**Sitio Web del Proyecto**

[www.srpedd.org/New-Bedford-TOD-Study](http://www.srpedd.org/New-Bedford-TOD-Study)

Escanea el Código QR con tu smartphone



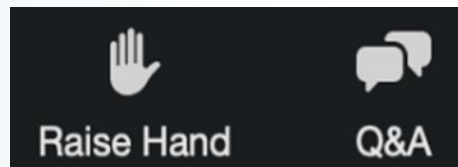
**Portal digital do projecto**

[www.srpedd.org/New-Bedford-TOD-Study](http://www.srpedd.org/New-Bedford-TOD-Study)

Digitalize o QR Code com o seu telemóvel

## Public Comment

- Please share only one question or comment at a time
- Press the **RAISE HAND** button to share your question or comment verbally. Wait for the moderator to recognize you and unmute you before speaking.



*Tech issues?  
Call 508-443-4045*

- Use the Q&A button to submit a typed question or comment.
- Attendees who speak Spanish or Portuguese must raise their hands to provide comments or questions verbally for the interpreters to hear you.
- You may also email [southcoastrail@dot.state.ma.us](mailto:southcoastrail@dot.state.ma.us)



## How to Follow SCR

- Visit the project website and sign up for updates and construction information:  
[www.mass.gov/southcoastrail](http://www.mass.gov/southcoastrail)
- Send us comments at  
[SouthCoastRail@dot.state.ma.us](mailto:SouthCoastRail@dot.state.ma.us)
- Participate in the Transit Oriented Development planning at [www.srpedd.org/New-Bedford-TOD-Study](http://www.srpedd.org/New-Bedford-TOD-Study)

