

Winchester Center Station Improvements

**Public Meeting
November 21, 2019**

Winchester High School Auditorium

***Presentation of the
MBTA Winchester Center Commuter Rail Station
Rehabilitation Project***



MASSACHUSETTS BAY
TRANSPORTATION AUTHORITY



Agenda

1. Welcome and Elected Officials Opening Remarks
2. Project Site, Goals, Scope
3. Project Funding and Investments
4. Existing Conditions
5. Design Update
6. Accelerated Project Schedule
7. Construction and Mitigation
8. Closing Remarks from Town Manager, Lisa Wong
9. Questions/Comments

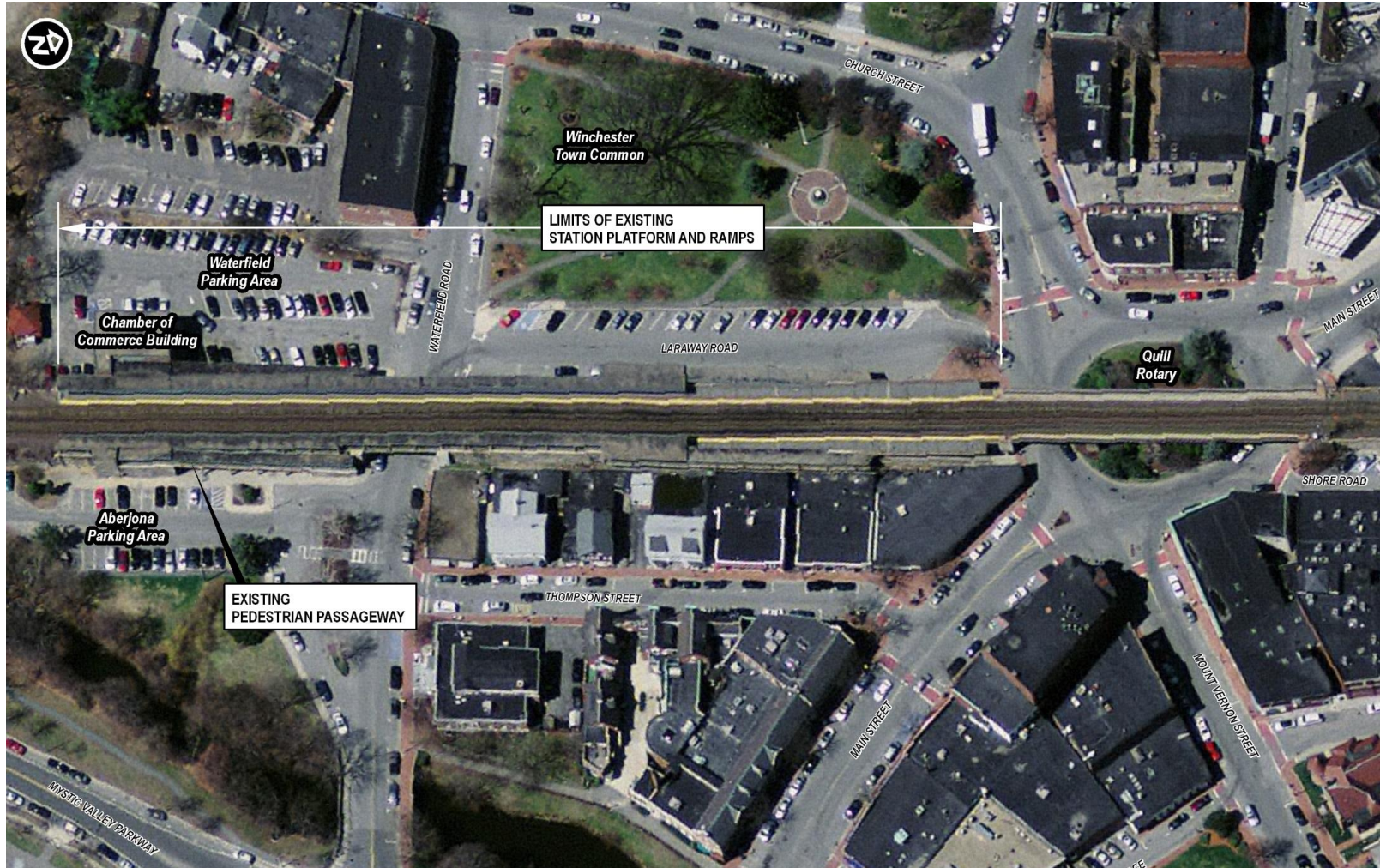


Opening Remarks

Elected Officials



Project Site



Winchester Center Station (29 Waterfield Road)

- Immediately adjacent to Winchester Town Common
- Served by MBTA Commuter Rail service on Lowell Line
- Between Mishawum Station to the north and Wedgemere Station to the south
- Approx. 237 total parking spaces on both sides of station
- Parking lots managed and maintained by the Town



Project Goals and Scope

SAFETY

- Install permanent and emergency lighting, security cameras at platforms and passenger assistance telephone

ACCESSIBILITY

- Install two new, fully accessible, high-level side platforms, new pedestrian bridge over Quill Rotary to new ramp entrance on Shore Road, new covered stairwells, wayfinding and signage, lighting, new platform canopy and benches, upgrade sidewalk
- Install new elevators and stairs on south end of station to connect platform to ground level
- Install new ramps and stairs at middle of station to access MBTA bus stop and town center

SUSTAINABILITY

- Use new Fiber Reinforced Polymer (FRP) composite panels for platforms and ramps to provide corrosion-resistant structures that can better withstand weather, de-icing chemicals and high foot traffic

RESILIENCY

- Elevated platforms achieve resiliency design parameters, new elements to be located to maintain operations during extreme environmental events

OPERATIONS

- High-level boarding improves dwell time, shorter trip times and enhances customer experience



Project Funding and Total MBTA Investments in Winchester

- Currently programmed and fully-funded for design and construction in FY20-24 CIP.
 - FY17 – Provided \$2.7M for design
 - FY18 – Provided additional \$4.6M for design, and \$30.2M for construction
 - FY20 – Provided additional \$12.3M to complete construction
 - Total Approved Project Budget is **\$49.9M**
- Between 2017 and 2019, the MBTA spent **\$700K** on urgent structural repairs throughout station.
- Expedite work to reduce operating costs. Progressing the project to advertisement saves the MBTA on future repairs and helps ensure more competitive bids during the construction off-season.
- In February 2010, MBTA received **\$2.2M** through a federal stimulus grant for design and installation of two new mini-high platforms and two accessible ramps at Wedgemere Station. Work was completed in June 2013.
- In total, MBTA has invested **\$52.8M** in Town of Winchester, for two station improvement projects and related repair work.

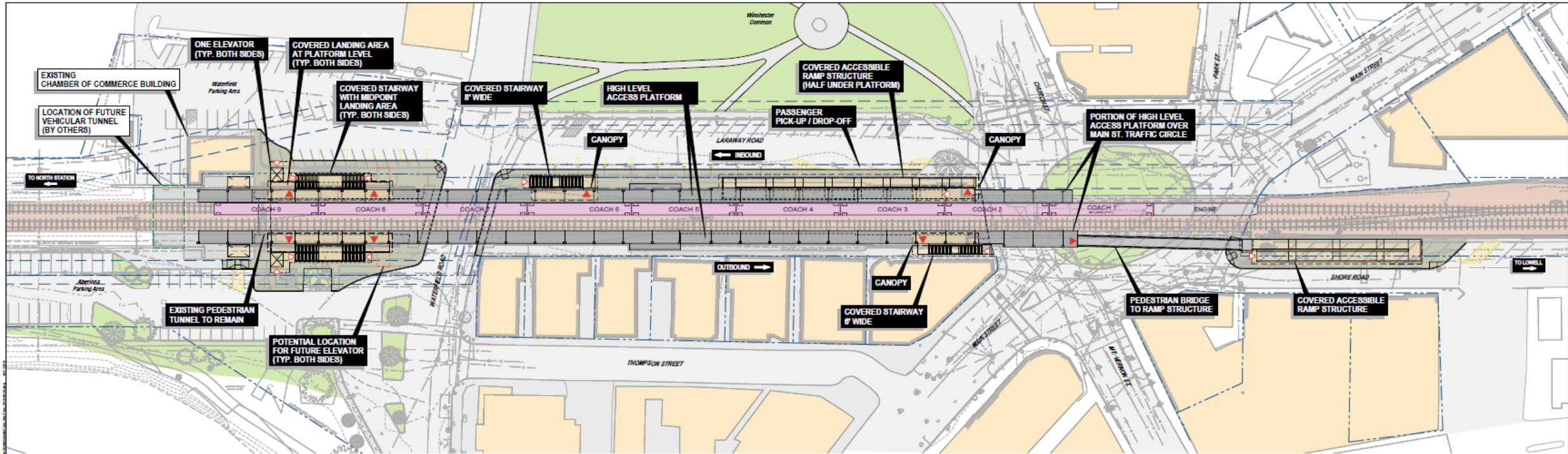
Existing Conditions – Station Photos



- Station ramps and platforms deteriorating
- Platform curbs spalling, causing railing posts to detach
- Station does not meet current MBTA Commuter Rail Design, ADA, or MAAB standards/requirements for accessibility



Future Station Layout



View of Outbound Side



View from Inbound Side



MASSACHUSETTS BAY
TRANSPORTATION AUTHORITY

Moving Massachusetts Forward.
massDOT

Winchester Center Station Improvements
Public Meeting - November 21, 2019

View from Winchester Common



MASSACHUSETTS BAY
TRANSPORTATION AUTHORITY

Moving Massachusetts Forward.
massDOT

Winchester Center Station Improvements
Public Meeting - November 21, 2019

Project Schedule

60% Design Plans

November 1, 2019

Public Meeting

November 21, 2019

100% Design Plans

January 2020

Public Meeting

January 2020

PS&E (Advertise Project)

February 2020



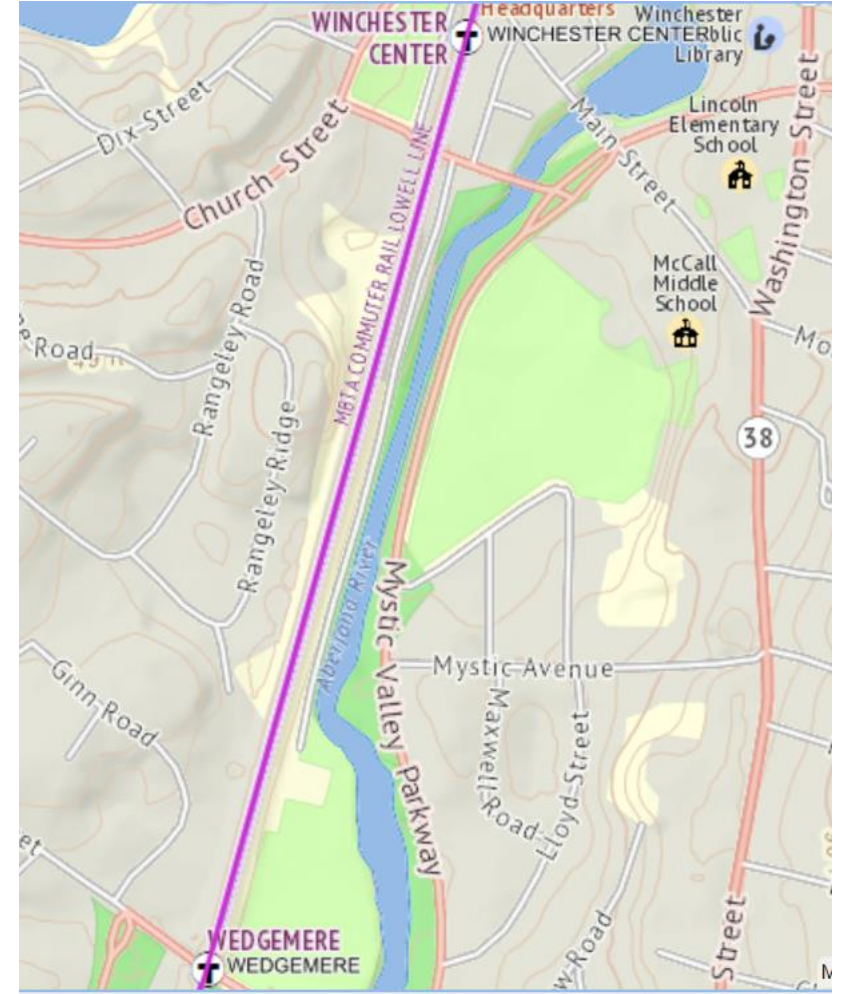
Construction Method Options

Partial Station Closure

- Phase Work
- Approx. 36 months to complete
- Increase in maintenance costs
- Slower construction activities
 - Longer presence in downtown

Full Station Closure

- Station closed to patrons
- Approx. 28 months to complete **(8 months faster)**
- Cost savings
- Proximate station (Wedgemere Station)
- Mitigation
 - Walk, Park, Bike, Drop-off, Bus



Mitigation Strategy During Construction – Parking/Bus

Parking

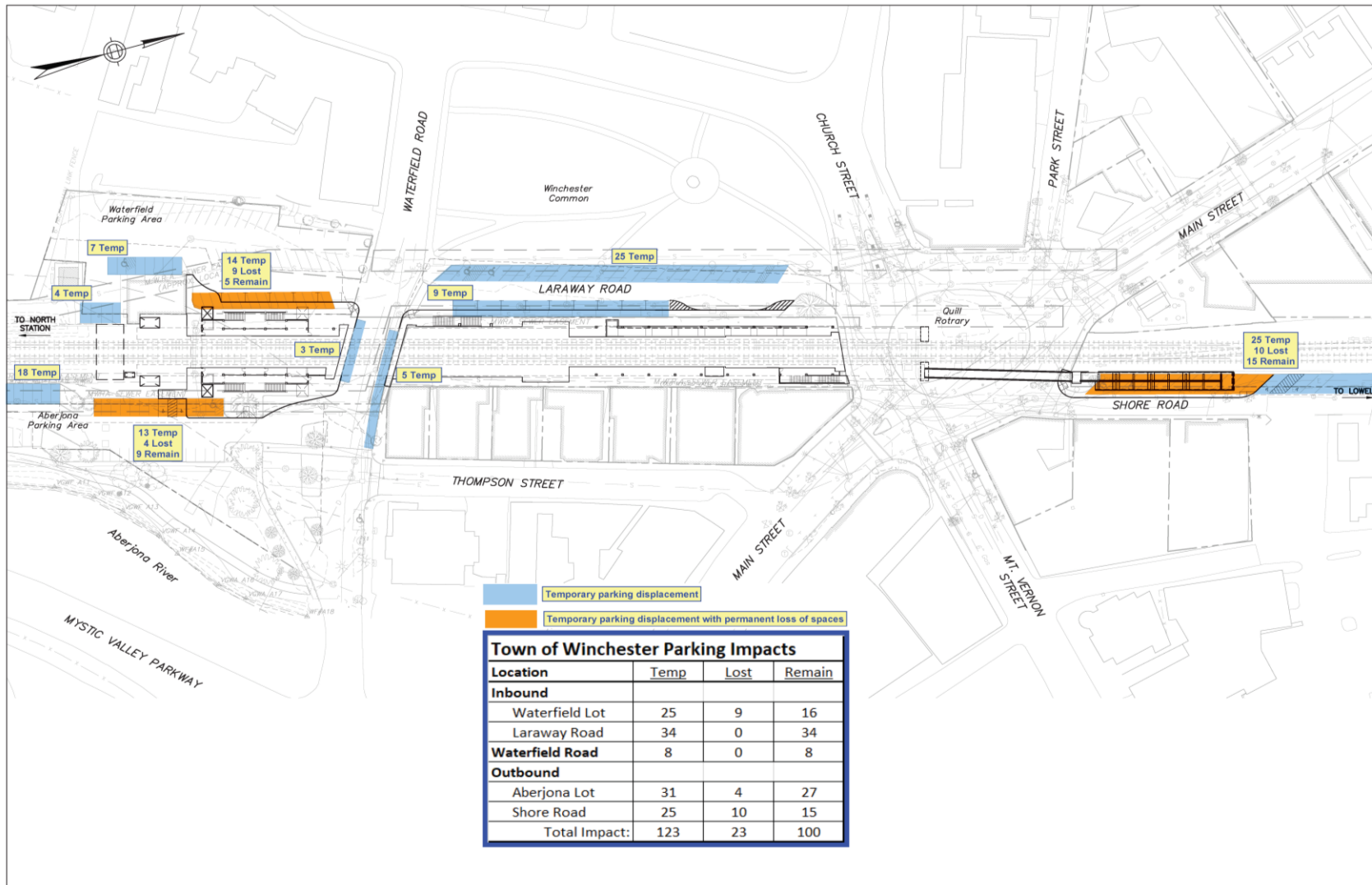
- Some parking remains at Winchester Center
- Review loss of spots and look to provide alternatives for drivers
- Currently investigating parking options

Shuttles and MBTA Bus Route #134

- Move MBTA Bus Route #134, proposed to keep as close as possible to shuttle bus pick-up/drop-off point at Winchester Center
- **Bus shuttles** to/from Wedgemere Station (0.6 miles further south)
 - Proposed pick-up and drop-off on Waterfield Road near and around Wedgemere Station



Parking Impact Plan



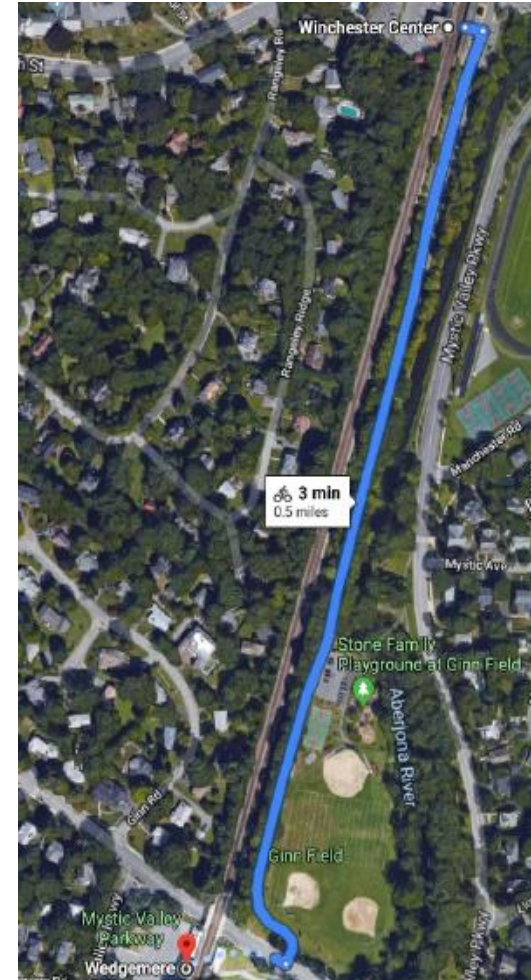
Mitigation Strategy During Construction – Walk and Bicycle

Pedestrian Access

- **Walk** to Wedgemere Station
 - Promote use of Tri-Community Greenway for pedestrian access between stations during construction; approx. 13 minutes from Winchester Station (paved and accessible)

Bicycles

- **Bicycle access and parking** at Wedgemere Station
 - Provide additional bike racks at Wedgemere Station (existing bike racks are crowded)
 - Use shared path through Tri-Community Greenway (approx. 3 minutes from Winchester Station)

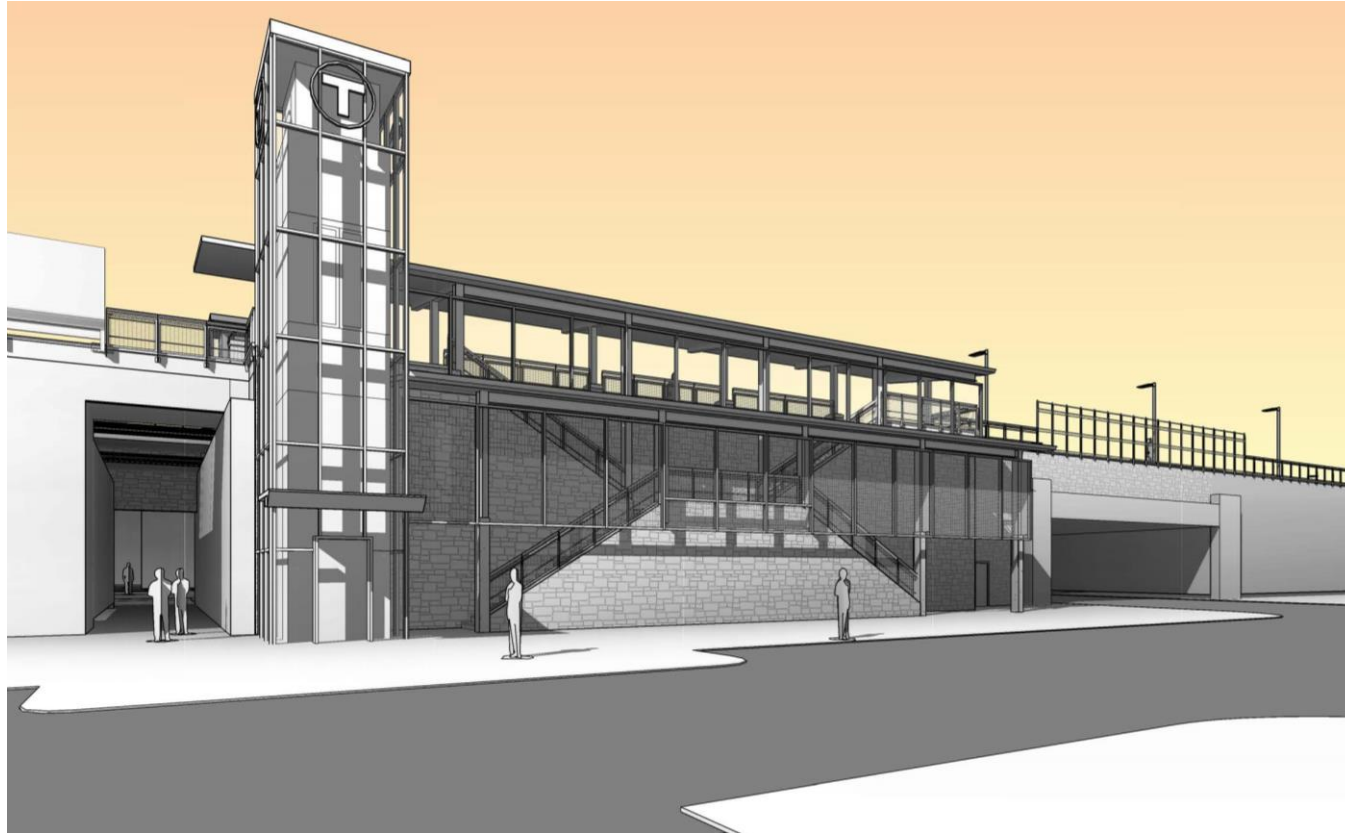


Closing Remarks

Town Manager, Lisa Wong



Questions/Comments



Project email address: winchesterstation@MBTA.com

Project website: mbta.com/winchesterstation



MASSACHUSETTS BAY
TRANSPORTATION AUTHORITY



Winchester Center Station Improvements
Public Meeting - November 21, 2019