



Massachusetts Bay Transportation Authority

General Manager's Remarks

Fiscal and Management Control Board

March 19, 2018



Agenda

- Transit Driver Appreciation
- March 13 storm response
- Commuter Rail arrival time predictions
- SL3-Chelsea: public outreach



2018 Transit Driver Appreciation Day



RED LINE TEAM

**Transit
Driver
Appreciation
Day** March 16, 2018

Thanks for all you do!



SOUTHSIDE BUS TEAM

**Transit
Driver
Appreciation
Day** March 16, 2018

Thanks for all you do!



BLUE LINE TEAM

**Transit
Driver
Appreciation
Day** March 16, 2018

Thanks for all you do!



ORANGE LINE TEAM

**Transit
Driver
Appreciation
Day** March 16, 2018

Thanks for all you do!



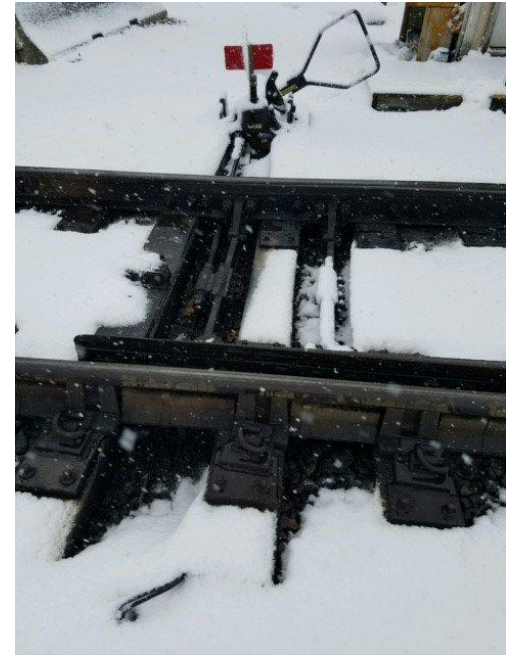


2018 Transit Driver Appreciation Day



March 13 Storm

- Investments into system resiliency are showing results



March 13 Storm

- Improved planning and coordination





March 13 Storm

- Improved planning and coordination





Train arrival improvements

- TrainLoc and Concentrate improve accuracy of Commuter Rail train locations and train arrival predictions on T-endorsed apps and MBTA.com
- Customer benefit: decisions based on better information
- New platform accurate within 10-40 seconds
 - Previous system: as “old” as two minutes

SL3-Chelsea – Starting April 21

- Upcoming public meetings:
- Tonight, 6:30 p.m. East Boston High Auditorium
- Wednesday, March 21, 6:30 p.m.
- Chelsea City Hall

