



Joint Board Presentation



GLX Program Update

1. 3-Month Summary
2. Look Ahead
3. Key Performance Metrics
 - Costs
 - Schedule
 - Design Progress
 - Construction Progress

GLX Progress

- Notice-to-Proceed issued to Design-Build Entity (*GLX Constructors*) on December 20, 2017
- Mobilization Progress
 - GLX Constructors staffed to 105 on-site personnel
 - MBTA Program Management Team staffed to 72 personnel
- Design has begun (66 submittals received, 59 reviewed & returned)
 - Power Systems - Retaining walls - Final Site Grading
 - Bridge Structures - Track Alignment - Management Plans

GLX Progress (cont'd)

- Preliminary Field Work underway
 - Utility locating
 - Site survey
 - Soil boring/Soil sampling
 - Pre-demolition building inspections
 - Laydown area prep work
 - Coordination with municipalities and other 3rd parties
 - Upcoming activity planning



GLX Progress (cont'd)

- Community Outreach
 - GLX Community Working Group established (14 members from Somerville, Cambridge and Medford)
 - 3 meetings to date
 - Purpose of CWG is to coordinate upcoming construction related impacts
 - Use of project website (<http://greenlineextension.org/index.html>), email data base (5,400 members), twitter, flyers, etc.
- eBuilder System Utilization
 - 183 users trained
 - 40,000 files shared
 - 27,000 system log-ins to date
 - 150 Design and contract submittals processed (design packages, RFI's, etc.)



GLX Look Ahead

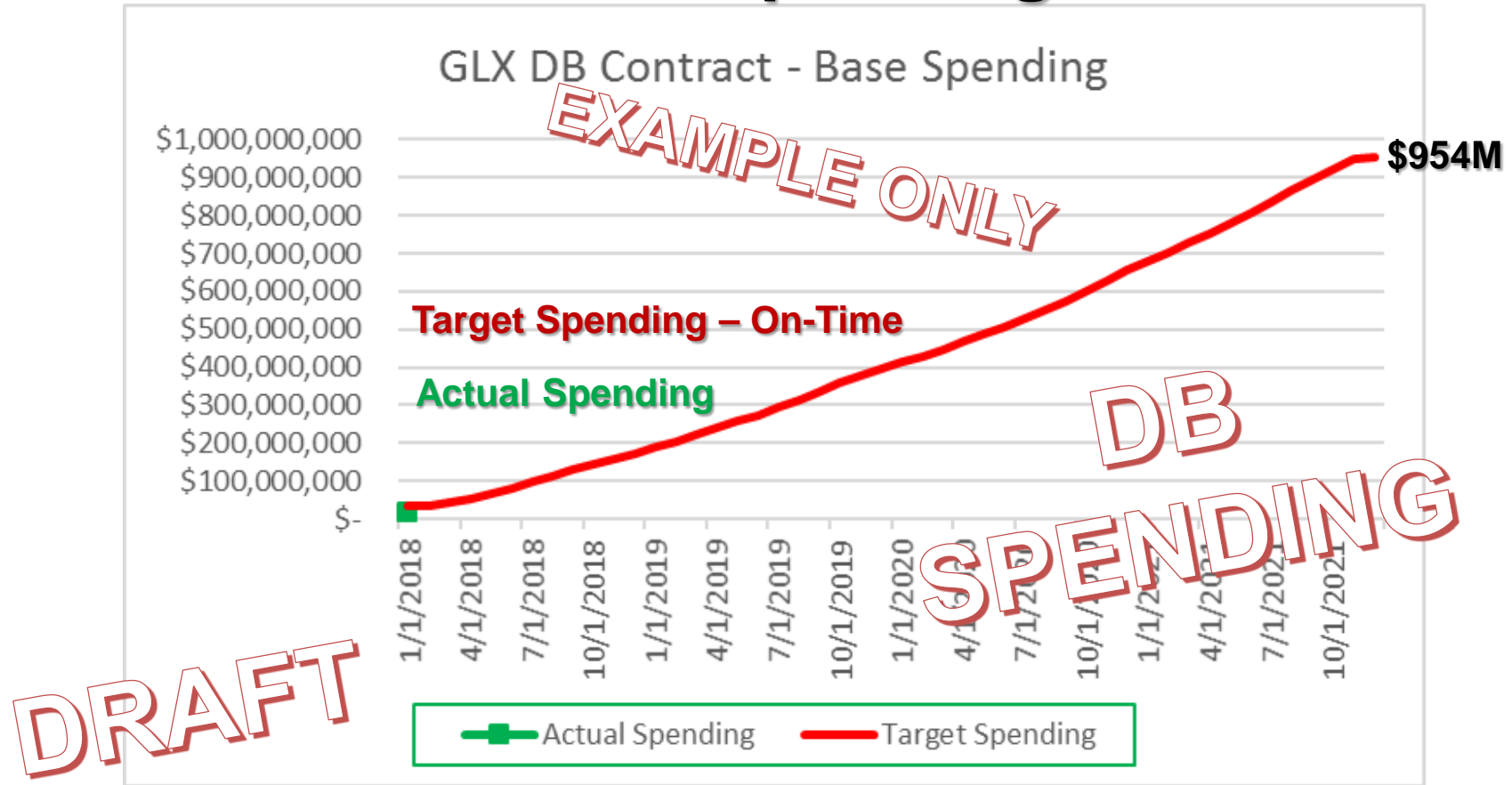
- Continue staff mobilization (MBTA and Design-Build Entity)
- Advance Design (track alignment, retaining walls, systems)
- Continue preliminary field work
 - Rodent abatement
 - Tree Clearing
 - Building demolition
 - Existing Condition Surveys (adjacent structures, etc.)
- Public Meeting scheduled for March 21, 2018, at Somerville High School



Cost and Schedule Update



DB Contract - Base Spending



Critical Program Milestone Deadlines

Milestone	Milestone Deadline	Milestone Date
Notice to Proceed		20-Dec-17
Milestone 2: Contract Substantial Completion	1,340 Days from NTP	21-Aug-21
Milestone 1: Contract Final Acceptance	60 Days from achieving Substantial Completion	20-Oct-21
Program Completion Milestone		15-Dec-21



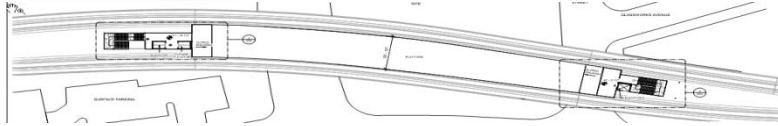
Design and Construction Status



Initial Performance Indicator – Dashboard Graphics

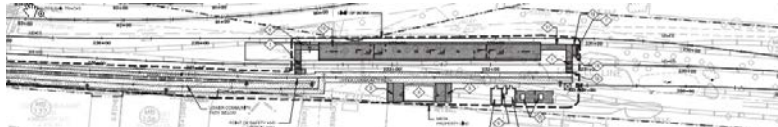
Quarterly – Design Station Progress Update

• Lechmere



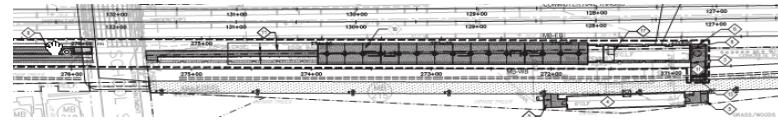
20% Complete

• East Somerville



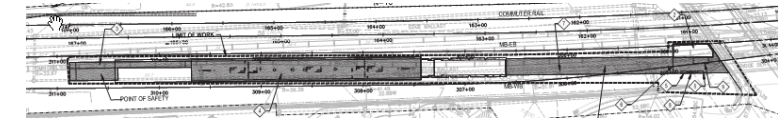
5% Complete

• Gilman



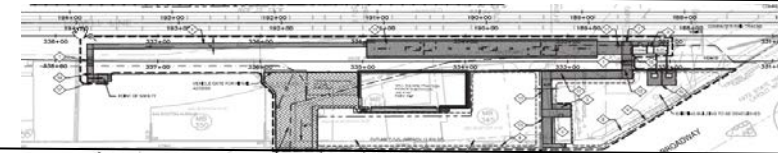
20% Complete

• Magoun



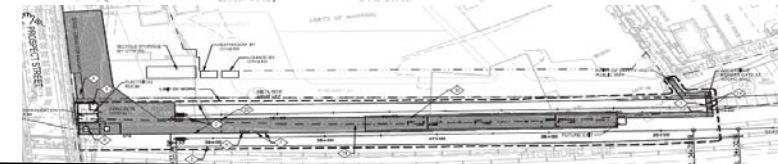
5% Complete

• Ball Square



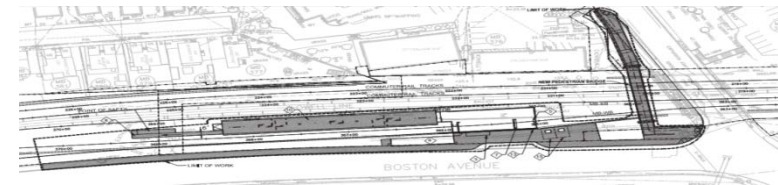
5% Complete

• Union



5% Complete

• College Ave.



10% Complete

**D
E
S
I
G
N**

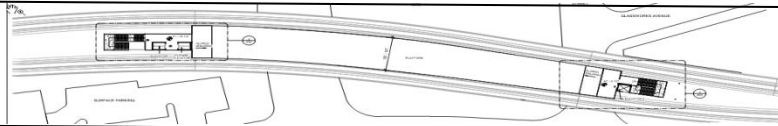
* Baseline Schedule is still under Review - % here are MBTA Initial Assessments

Initial Performance Indicator – Dashboard Graphics

Quarterly – Construction Station Progress Update

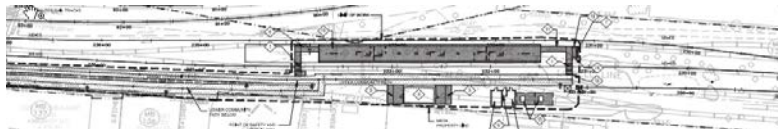
C
O
N
S
T
R
U
C
T
I
O
N

- Lechmere



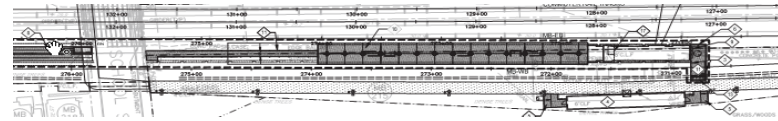
0% Complete

- East Somerville



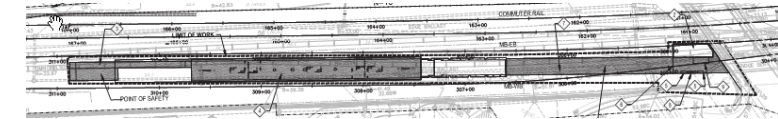
0% Complete

- Gilman



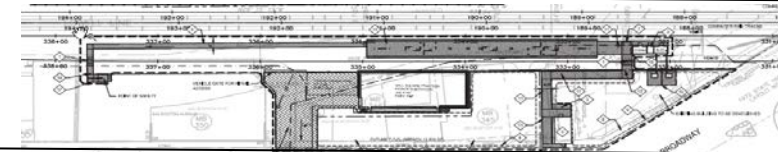
0% Complete

- Magoun



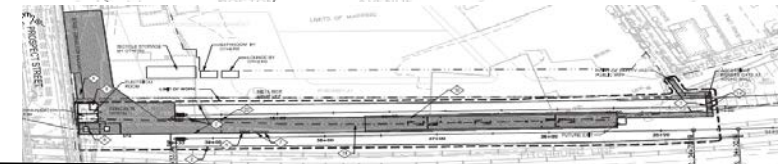
0% Complete

- Ball Square



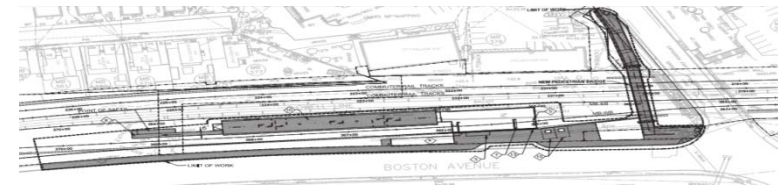
0% Complete

- Union



0% Complete

- College Ave.



0% Complete