

WELCOME TO BLUE HILL AVE STATION



Work in Progress

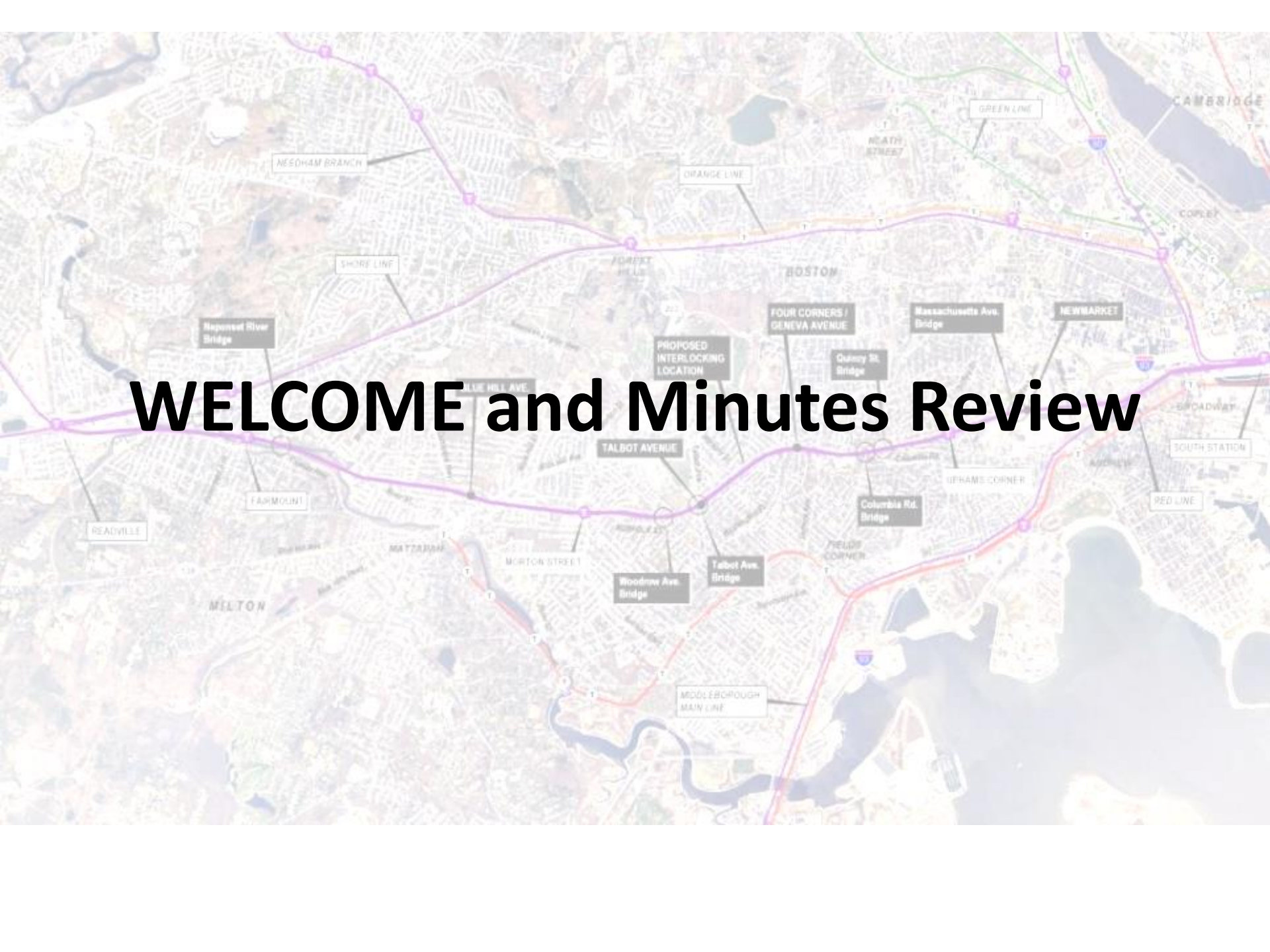
BLUE HILL AVE STATION

DESIGN WORKING GROUP

AGENDA

- **Welcome and Minutes Review**
 - **Commuter Rail Station Design Features**
 - **Challenges (past stations & this location)**
 - **Closing**
 - **Next Meeting – February 12, 2015**
- 
- A map of the Boston area showing various commuter rail lines. The lines are color-coded: purple for the Orange Line, blue for the Shore Line, and red for the Main Line. A specific location is marked with a purple dot and labeled 'PROPOSED INTERLOCKING LOCATION'. Other labels on the map include 'NEEDHAM BRANCH', 'ORANGE LINE', 'SHORE LINE', 'BOSTON', 'NEWMARKET', 'SOUTH STATION', 'TALBOT AVENUE', 'WOODROW AVE. BRIDGE', and 'TALBOT AVE. BRIDGE'. The map also shows major roads and bridges like the Massachusetts Ave. Bridge and the Quincy St. Bridge.

WELCOME and Minutes Review



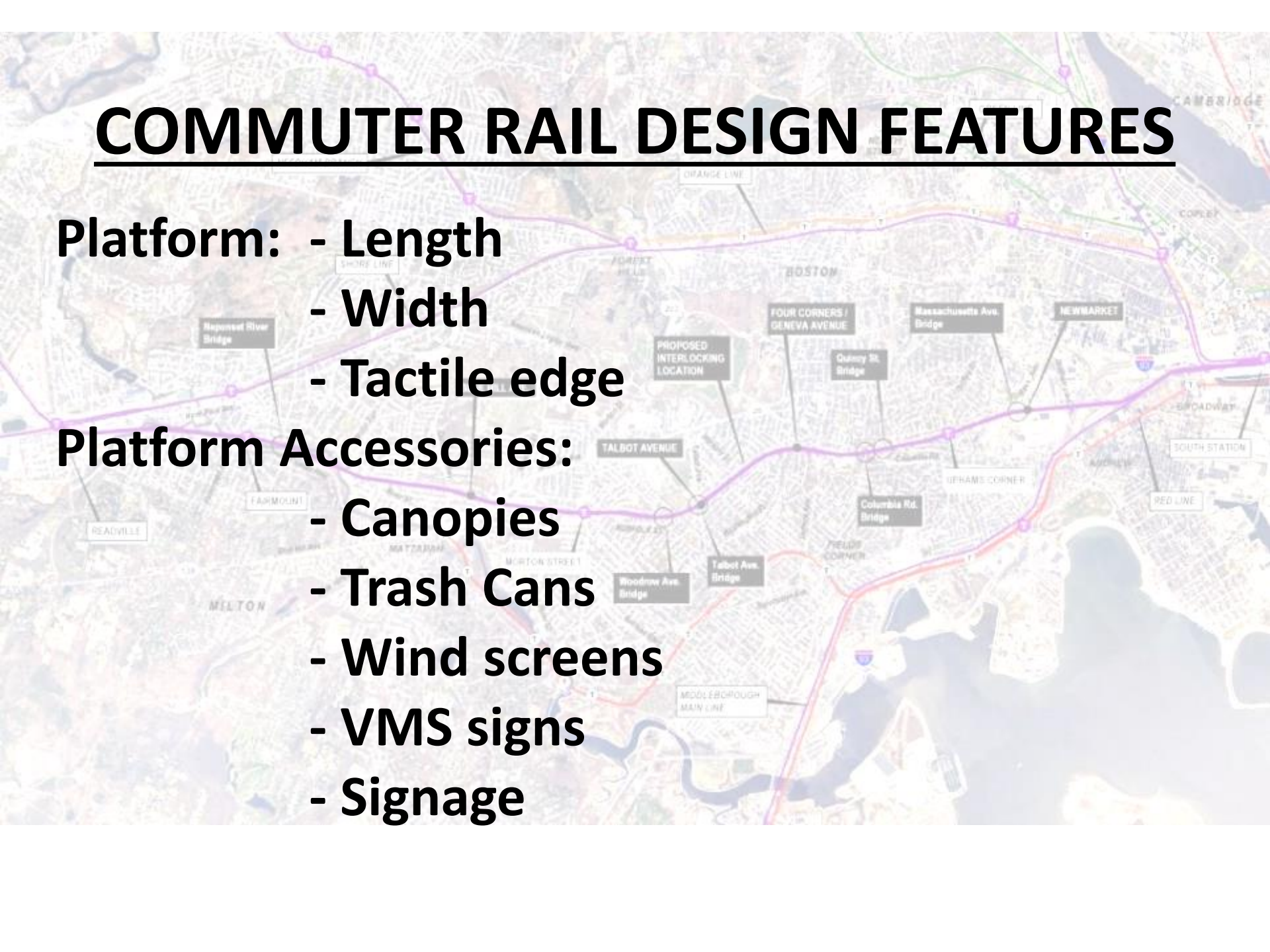
COMMUTER RAIL DESIGN FEATURES

Platform:

- Length
- Width
- Tactile edge

Platform Accessories:

- Canopies
- Trash Cans
- Wind screens
- VMS signs
- Signage

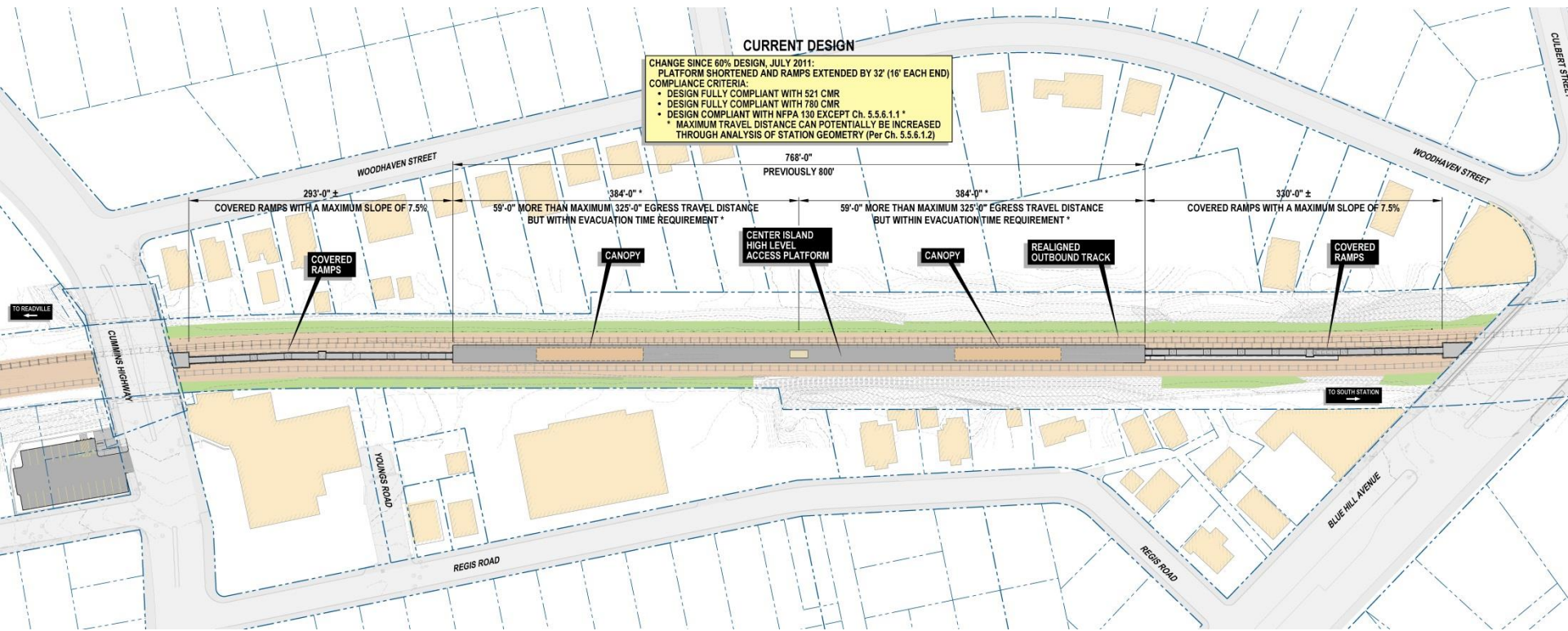


COMMUTER RAIL DESIGN

STATION DESIGNED USING CODES -

- American with Disabilities Act Access Guidelines (ADAAG)**
- Mass Architectural Access Board (MAAB)**
- Massachusetts Building Code 8th ed**
- International Building Code (IBC)**
- MBTA Commuter Rail Standards Manual**
- MBTA Guide to Access**
- National Fire Protection Association (NFPA)**

NEW 60% DESIGN: CENTER ISLAND



PLAN WITH SINGLE CENTER ISLAND PLATFORM



MASSACHUSETTS BAY
TRANSPORTATION AUTHORITY



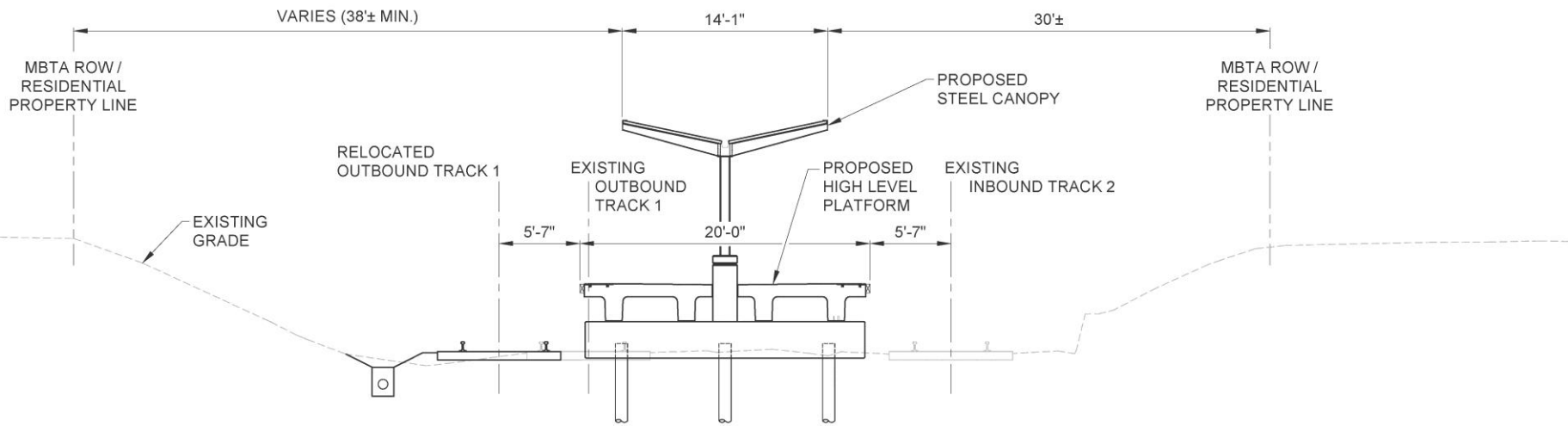
Blue Hill Avenue / Cummins Highway Station

Fairmount Corridor Improvements Project

PLATFORM

- Central platform with inbound/outbound train access
- Platform Length: 768 feet
- Platform Width: 20 feet
- Platform access by 2 covered ramps
- 2 canopies provided at each end of the platform
- Yellow tactile strip at each edge of platform





60% DESIGN - CENTER ISLAND PLATFORM

TYPICAL STATION CROSS SECTION



Center Island Platform 60% Design

(From Platform Looking towards Blue Hill Avenue)



MASSACHUSETTS BAY
TRANSPORTATION AUTHORITY

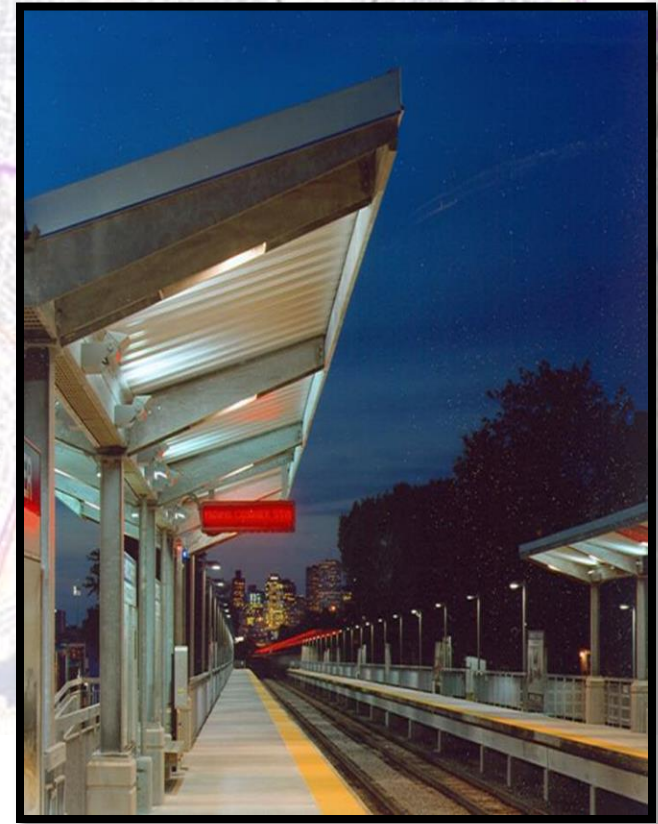
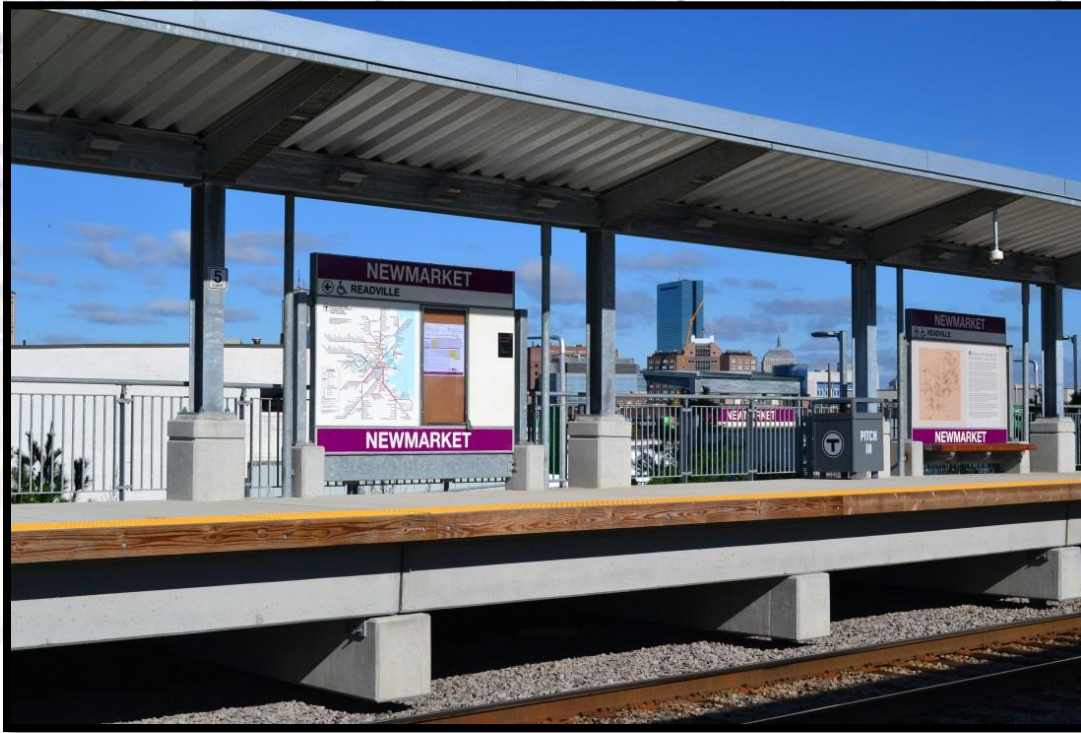


Blue Hill Avenue / Cummins Highway Station

Fairmount Corridor Improvements Project

PLATFORM AMENITIES

- **Canopies:**
 - Required to protect 60% of the passenger population from rain and snow *
 - 2 canopies provided at each end of platform
 - Each canopy covers 1670 square feet



* Per Commuter Rail Design Standards Manual



TALBOT AVENUE STATION
(with Station Amenities)



TALBOT AVENUE STATION
(with Station Amenities)

PLATFORM AMENITIES

- **Benches:**
 - Required at 200' maximum along accessible routes
 - Benches integrated with signage on platforms
 - Benches located at mid-point of ramps





BENCH WINDSCREEN ON CENTER ISLAND PLATFORM - LITTLETON STATION
(with Station Amenities)

PLATFORM AMENITIES

- **VMS (Variable Message Sign):**
 - 1 provided at each canopy



PLATFORM AMENITIES

- **Signage:**
 - **MBTA standard* fiberglass panels with Station Identification, Commuter Rail system map and artwork panels**
 - **Coordinated through the MBTA, artwork is provided by the community for permanent display**

* Per Commuter Rail Design Standards Manual

LITTLETON / RTE 495

← FITCHBURG

BOSTON →

A group of townspeople at the Littleton Depot in 1916 including some of the oldest inhabitants. (Image right)



Irving Smith's Harness Shop stood at the corner of Taylor Street and Whitcomb Avenue, across from the Littleton Depot.



The depot building on Taylor Street was built in 1879. It also housed a post office, public telephone, and telegraph office.



The Thayer & Inland store on the corner of Taylor Street and Sanderson Road opened in 1927. It originally stood on the opposite side of the tracks.

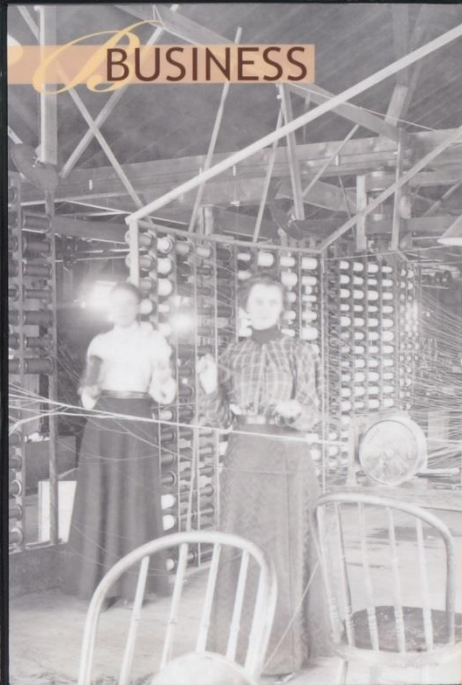


The North Littleton Depot served the Sears Brook line of the Boston & Maine from 1849 to 1928. It was located off Clear Road near the Condon town line.

Photos courtesy of the Littleton Historical Society.



DEPOT



BUSINESS

Started in 1882 for the manufacture of suspenders, the Conant Manufacturing Co. rapidly expanded and was a world leader in elastic webbing production through the mid 20th century. (Image left)



The blacksmith shop on Stevens Street opened in 1879 under the ownership of Joseph Stevens. John A. Savage, mentioned, had the longest tenure at the shop.



Known as "The Block" this row of stores on Stevens Street opened in 1924. The "M" on the facade of the roof stands for Hageman, the builder of the Block.



Carl Road delivered ice to Littleton residents 1917.



The Harwell Heamer retail meat and provision market was located at the Common, Ice from Long Lake was used to refrigerate the meat.

Photos courtesy of the Littleton Historical Society.

LITTLETON / RTE 495

LITTLETON STATION
(Historic panel)


LITTLETON / RTE 495

ALL TRAINS  

SCHEDULE


LITTLETON/RTE 495



 Massachusetts Bay
Transportation Authority
Commuter Rail
Rapid Transit Map

All Commuter Rail stations have parking except
Boston, Milton, Abnott St, North
Andover, Fitch, Concord, Danvers, River St, etc.
Lynn, Lynn Center, Lynn St, Lynn
Windsor Gardens, Waverley



LITTLETON / RTE 495

LITTLETON STATION
(Spider Map)

FOUR CORNERS/GENEVA



TO SOUTH STATION



Local Artist ROBERT WILLIAM THORNELL, a resident of the Four Corners area since the 1970s, uses an eclectic mix of styles and tools to explore figurative, as well as abstract themes using drawing, painting and photography. Thornell has exhibited through the Greater Boston Gallery, the Boston African American Museum, the Museum of African Art, the Boston and Cambridge, as well as the Black Museum and the Museum of African Art. Thornell's work is featured in the book "Four Corners: The Story and Four Corners Local Culture" and the book "Four Corners: The Story and Four Corners Local Culture" and the book "Four Corners: The Story and Four Corners Local Culture" and the book "Four Corners: The Story and Four Corners Local Culture".

FOUR CORNERS/GENEVA

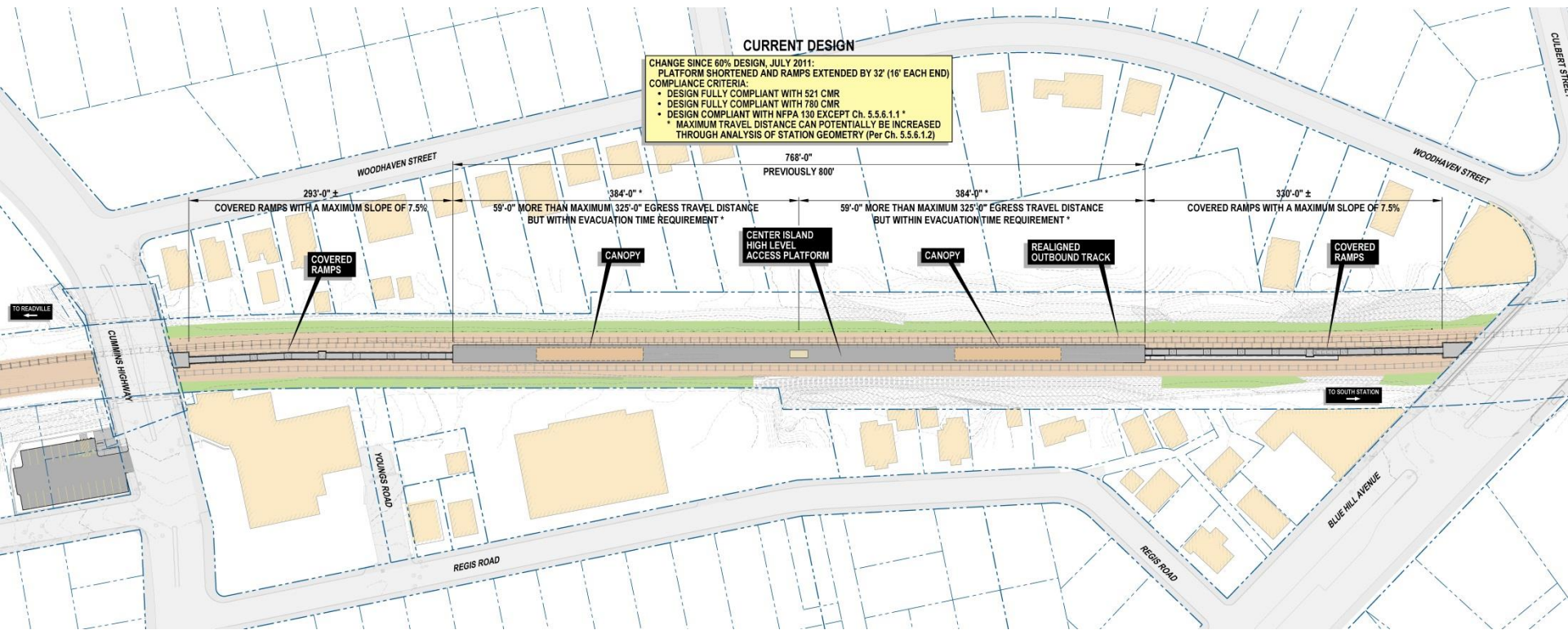
FOUR CORNERS STATION
(Local artist panel)

PLATFORM AMENITIES

- **Trash Cans:** 2 provided per canopy
- **Police Call Box:** 1 provided per canopy
 - Connects directly to the MBTA Police
 - Visually stands out for easy recognition
- **CCTV:** Multiple provided at canopies and access ramps



EGRESS



PLAN WITH SINGLE CENTER ISLAND PLATFORM



MASSACHUSETTS BAY
TRANSPORTATION AUTHORITY



Blue Hill Avenue / Cummins Highway Station

Fairmount Corridor Improvements Project

EGRESS COMPONENTS

- **Peak Passenger Load: 476***
- **Egress Components: 2 ramps**
 - Accessible ramps that connect at street level to each end of the platform
 - Each ramp serves 238 passengers
 - 330' long North ramp connects to Blue Hill Avenue bridge
 - 293' long South ramp connects to Cummins Highway bridge
- **Ramps: 6'-6" wide**

* Based on 2002 Fairmount Line Feasibility Study



Cummins Highway Station Entrance Ramp
(From Cummins Highway Looking North towards Blue Hill Avenue)



MASSACHUSETTS BAY
TRANSPORTATION AUTHORITY



Blue Hill Avenue / Cummins Highway Station

Fairmount Corridor Improvements Project

ACCESSIBLE RAMPS



LITTLETON STATION
(view towards ramp)



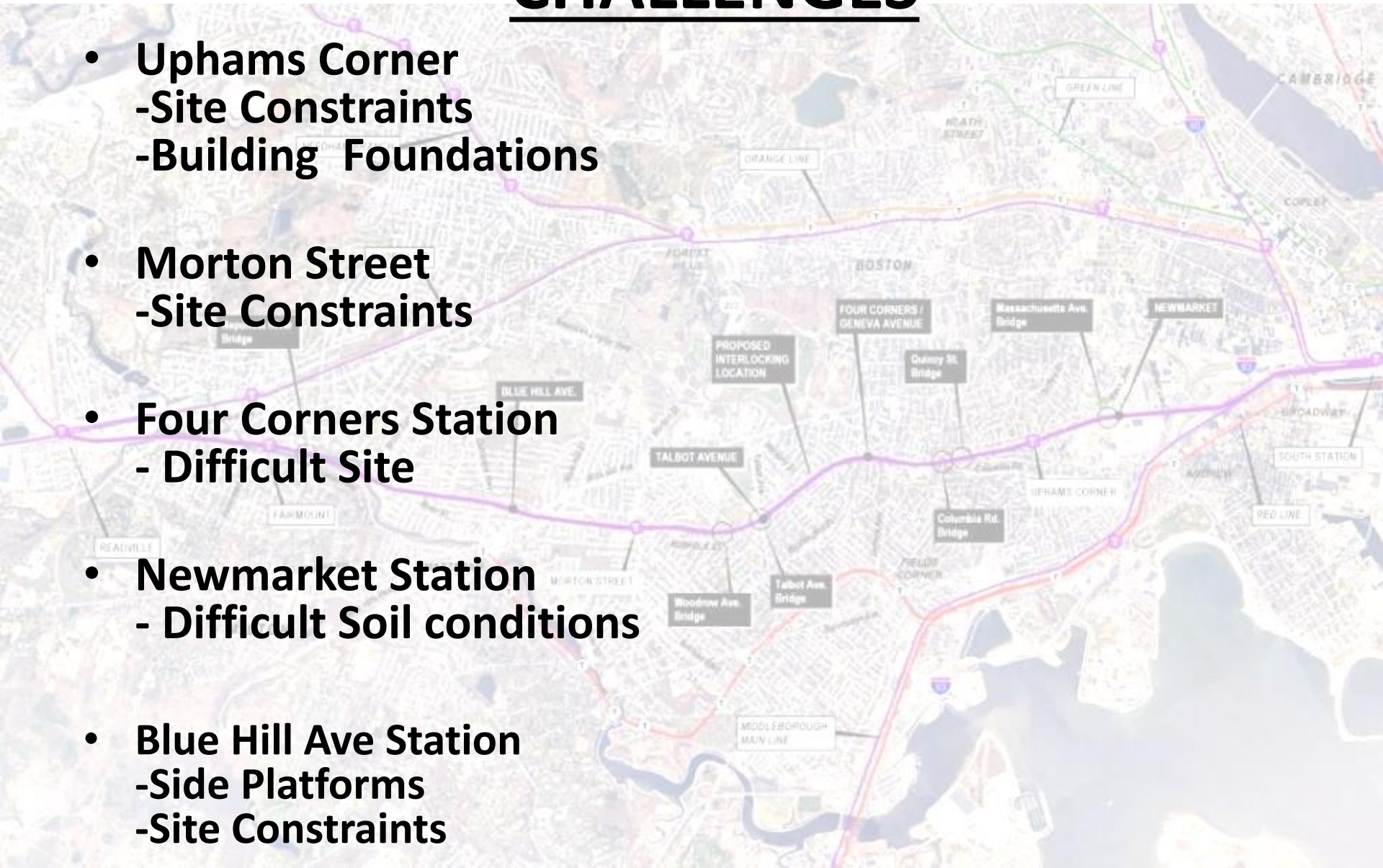
LITTLETON STATION
(view out ramp structure)



LITTLETON STATION
(Typical view inside ramp structure)

CHALLENGES

- **Uphams Corner**
 - Site Constraints
 - Building Foundations
- **Morton Street**
 - Site Constraints
- **Four Corners Station**
 - Difficult Site
- **Newmarket Station**
 - Difficult Soil conditions
- **Blue Hill Ave Station**
 - Side Platforms
 - Site Constraints



-
- **Questions**
 - **Closing**
 - **Next Meeting**
 - **February 12, 2015**