

WELCOME TO BLUE HILL AVE STATION



Work in Progress

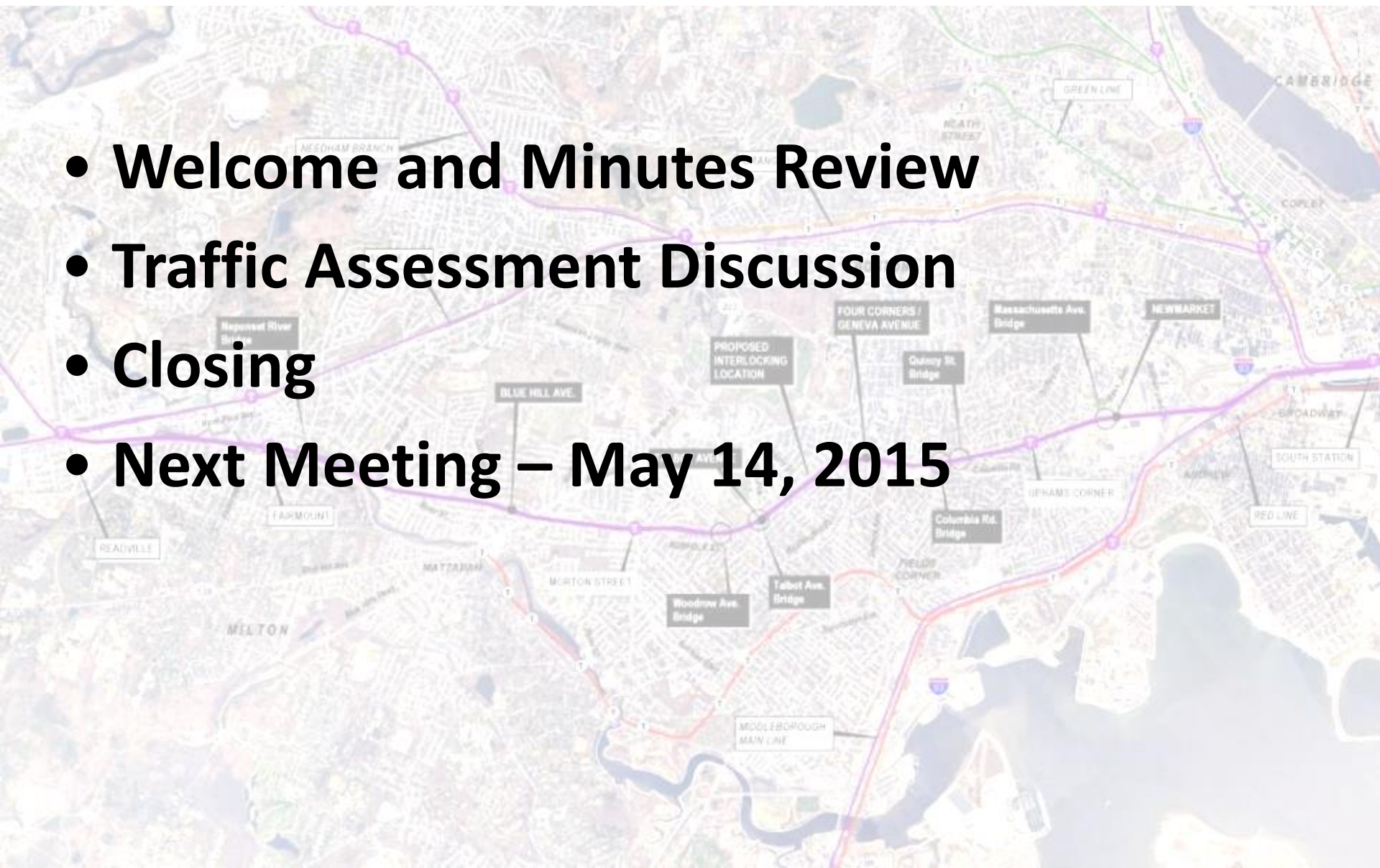
BLUE HILL AVE STATION

DESIGN WORKING GROUP

Meeting Number 4 – April 9, 2015

AGENDA

- **Welcome and Minutes Review**
- **Traffic Assessment Discussion**
- **Closing**
- **Next Meeting – May 14, 2015**



A detailed map of Boston and its surrounding areas, including Cambridge, Milton, and Needham. The map highlights several transit lines: the Green Line (green), Orange Line (orange), Shore Line (purple), and Red Line (red). Key landmarks and locations are labeled, including the Needham Branch, Needham River Bridge, Fairmount, Readville, Blue Hill Ave., Talbot Avenue, Four Corners / Geneva Avenue, Quincy St. Bridge, Massachusetts Ave. Bridge, Newmarket, South Station, and the proposed interlocking location. The map also shows major roads like I-93 and I-90, and bodies of water like the Charles River and the harbor. The text "WELCOME and Minutes Review" is overlaid in the center of the map.

WELCOME and Minutes Review

MBTA Services

- Bus Lines- Blue Hill Avenue – 245, 24, 28, 29, and 31
- Bus Lines- Cummins Highway- 30
- Bus Lines- River Street – 24, 27, 33, and 191
- Mattapan Square Red Line Station – 29, 33 and 245

Proposed Station

Project Location

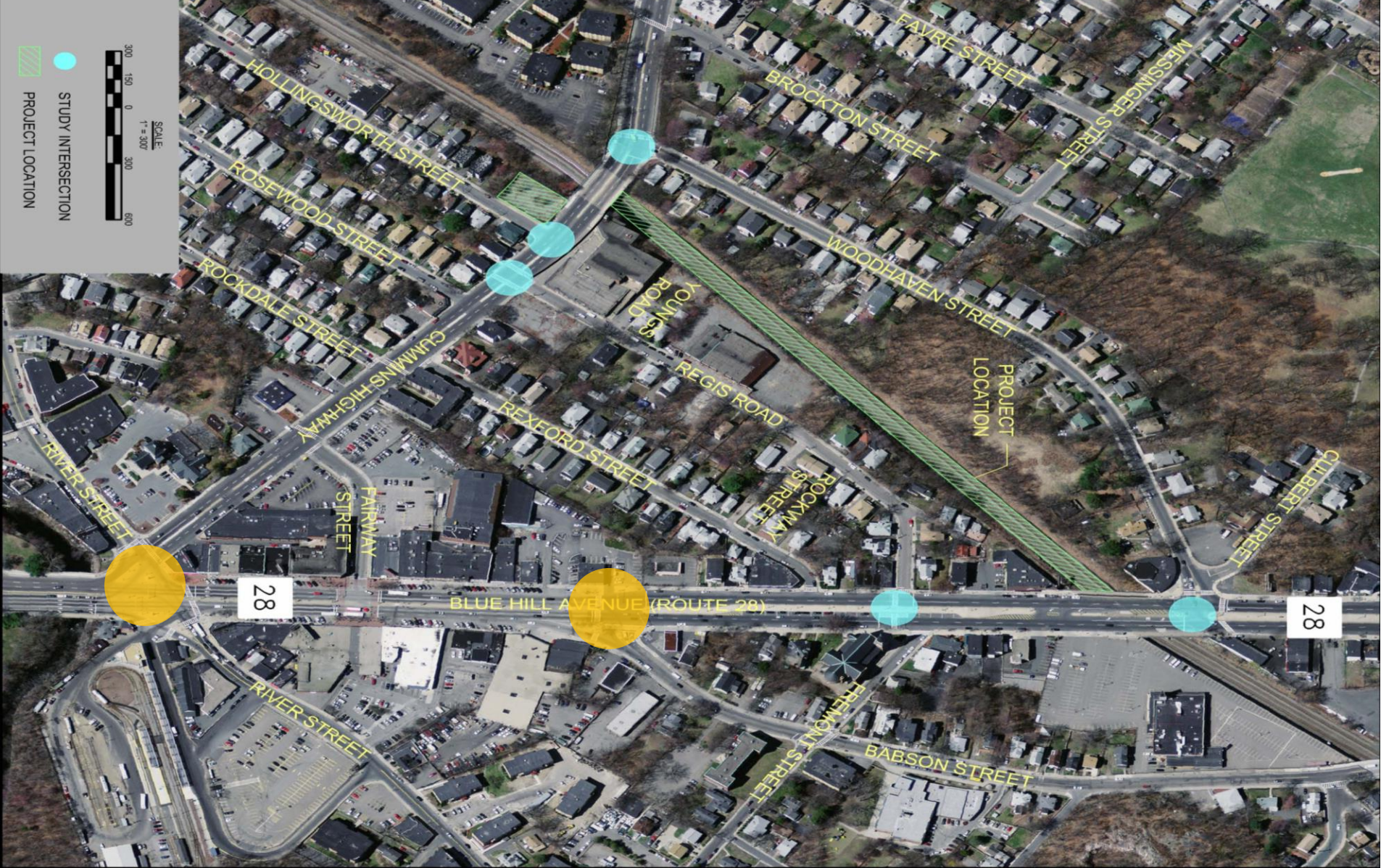


MASSACHUSETTS BAY
TRANSPORTATION AUTHORITY



Blue Hill Avenue / Cummins Highway Station

Fairmount Corridor Improvements Project



Locations of Data Collection

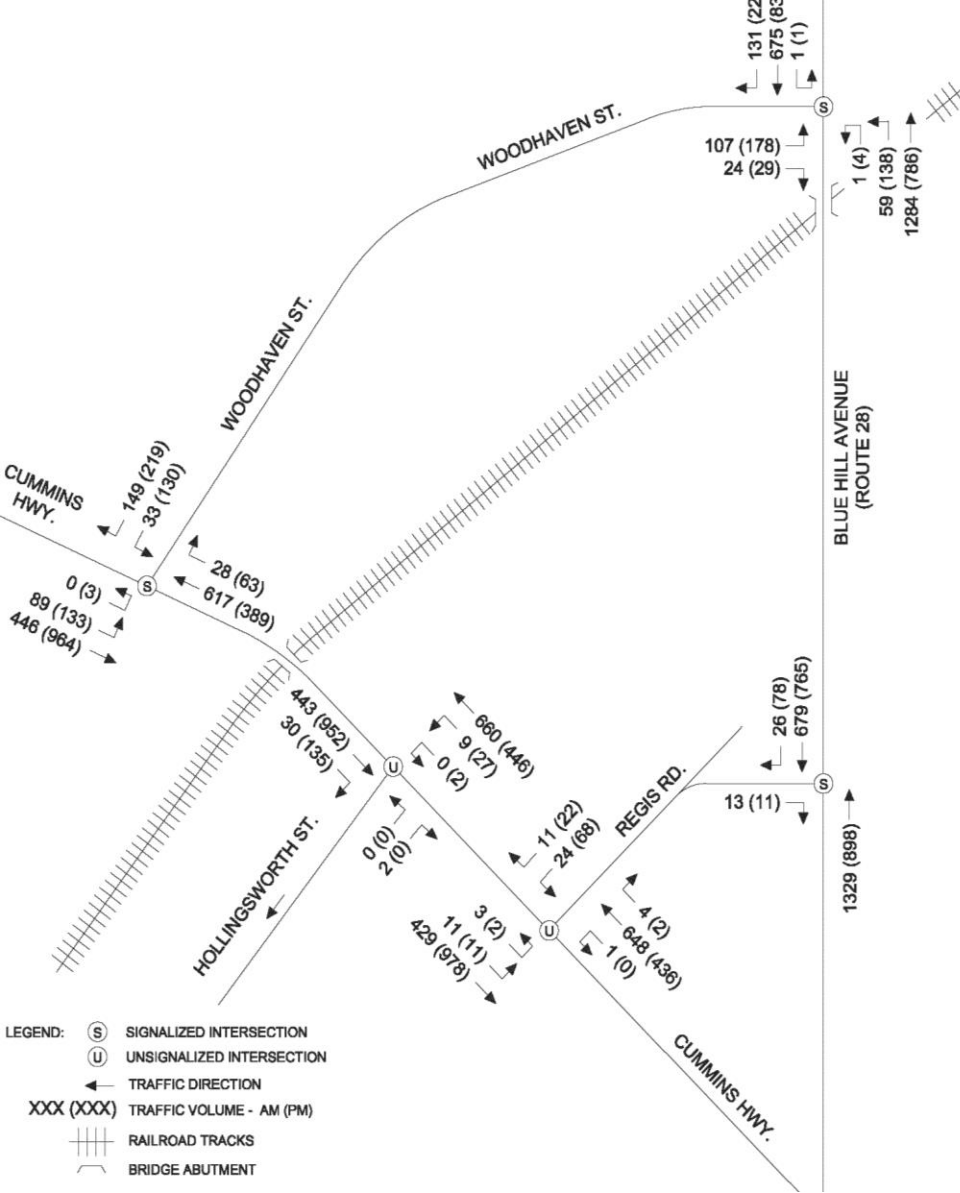


MASSACHUSETTS BAY
TRANSPORTATION AUTHORITY

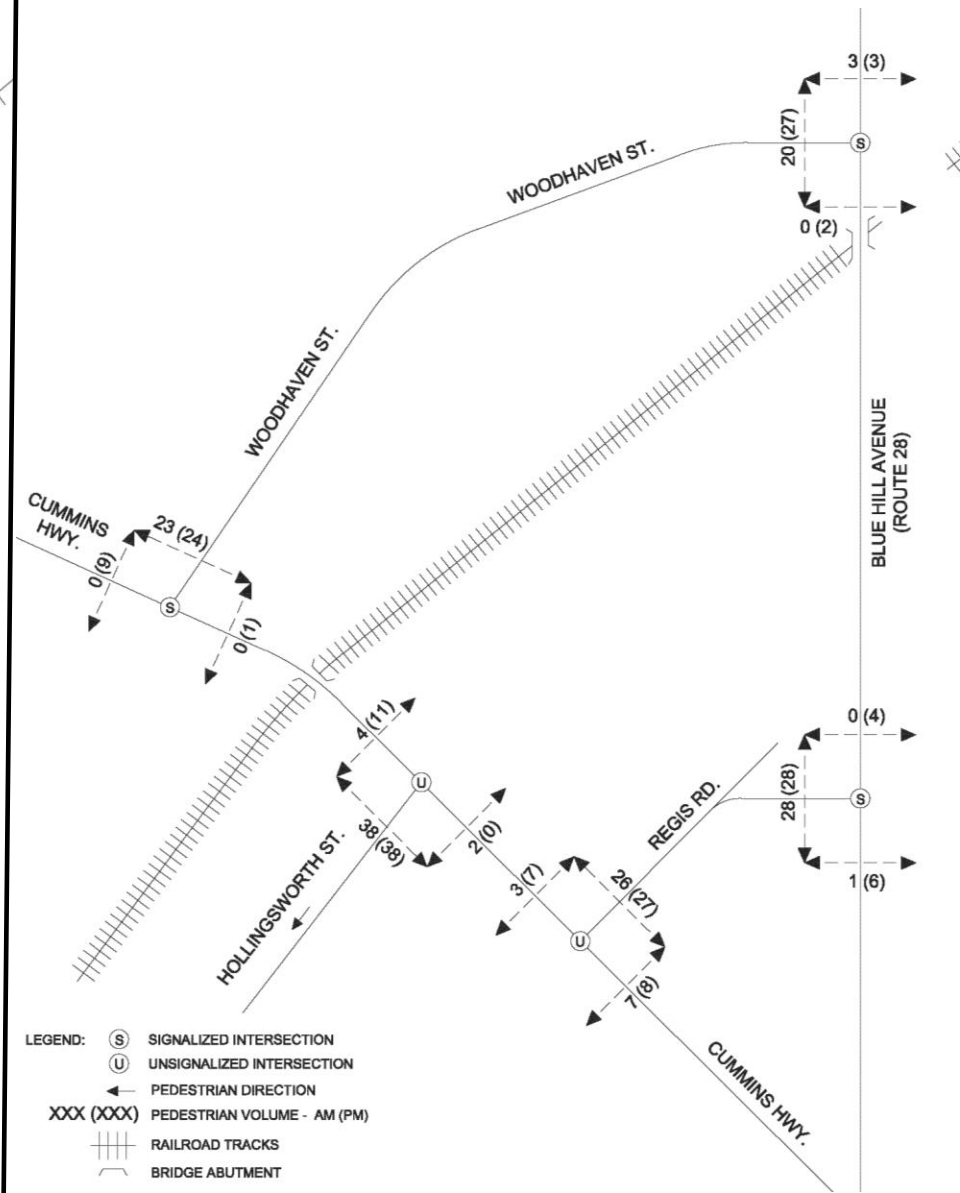


Blue Hill Avenue / Cummins Highway Station

Fairmount Corridor Improvements Project



Existing 2014 Vehicle Traffic Volumes



Existing 2014 Pedestrian Volumes

LEVEL OF SERVICE (LOS)



LOS "A" Delay 0-10 Seconds



LOS "B" Delay 10-20 Seconds



LOS "C" Delay 20-35 Seconds



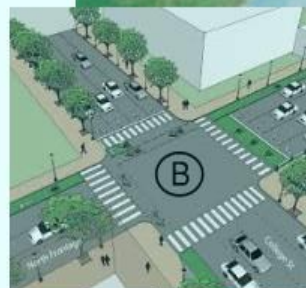
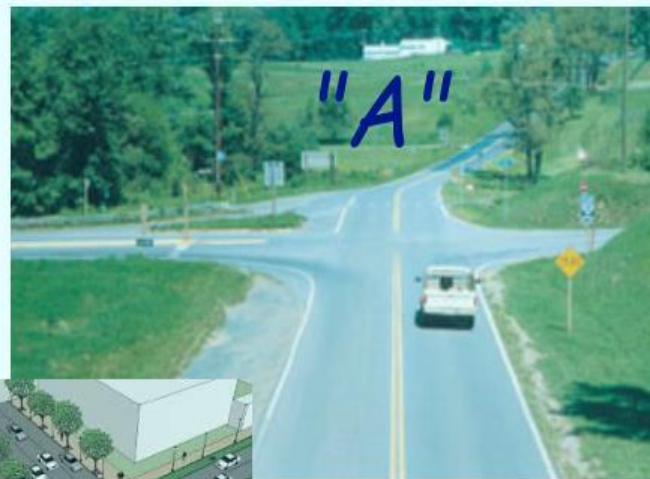
LOS "D" Delay 35-55 Seconds



LOS "E" Delay 55-80 Seconds



LOS "F" Delay >80 Seconds



Level of Services (LOS) Criteria



MASSACHUSETTS BAY
TRANSPORTATION AUTHORITY



Blue Hill Avenue / Cummins Highway Station

Fairmount Corridor Improvements Project



2014 Existing Conditions Level of Service (LOS)

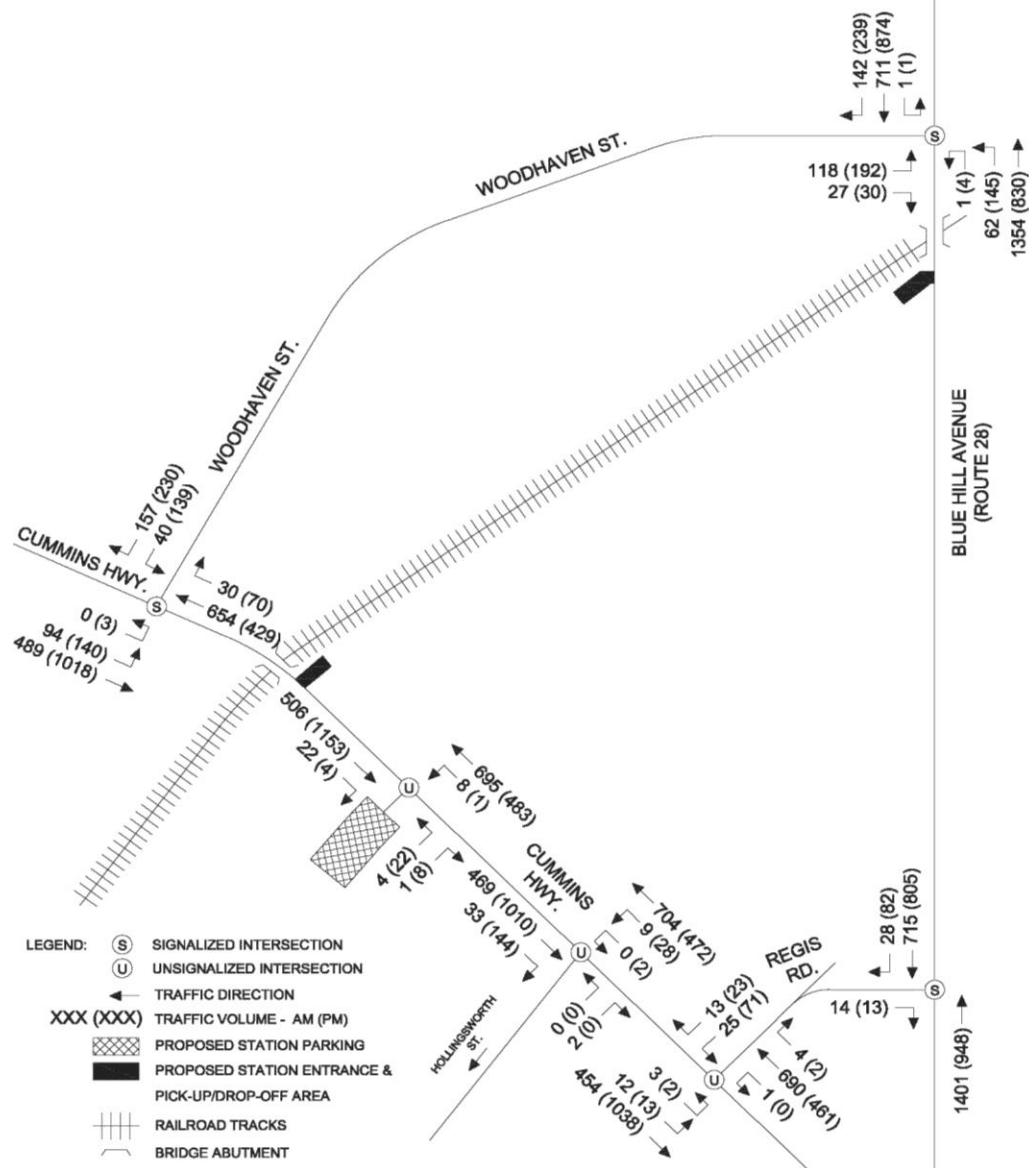


MASSACHUSETTS BAY
TRANSPORTATION AUTHORITY



Blue Hill Avenue / Cummins Highway Station

Fairmount Corridor Improvements Project



Future 2024 Vehicle Traffic Volumes- Build Conditions



MASSACHUSETTS BAY
TRANSPORTATION AUTHORITY



Blue Hill Avenue / Cummins Highway Station

Fairmount Corridor Improvements Project



2024 Build Conditions Level of Service (LOS)

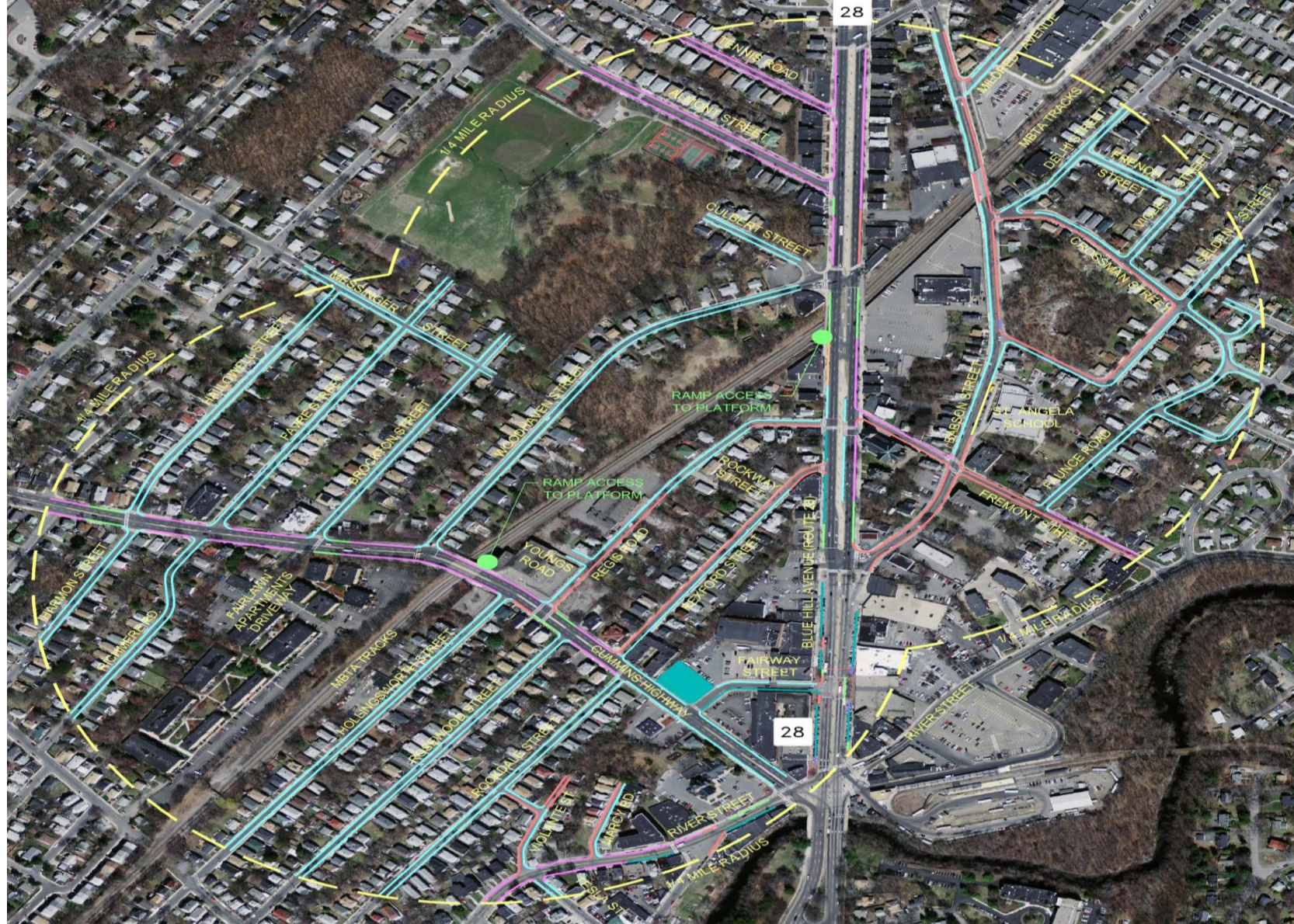


MASSACHUSETTS BAY
TRANSPORTATION AUTHORITY



Blue Hill Avenue / Cummins Highway Station

Fairmount Corridor Improvements Project



Existing Parking Regulations

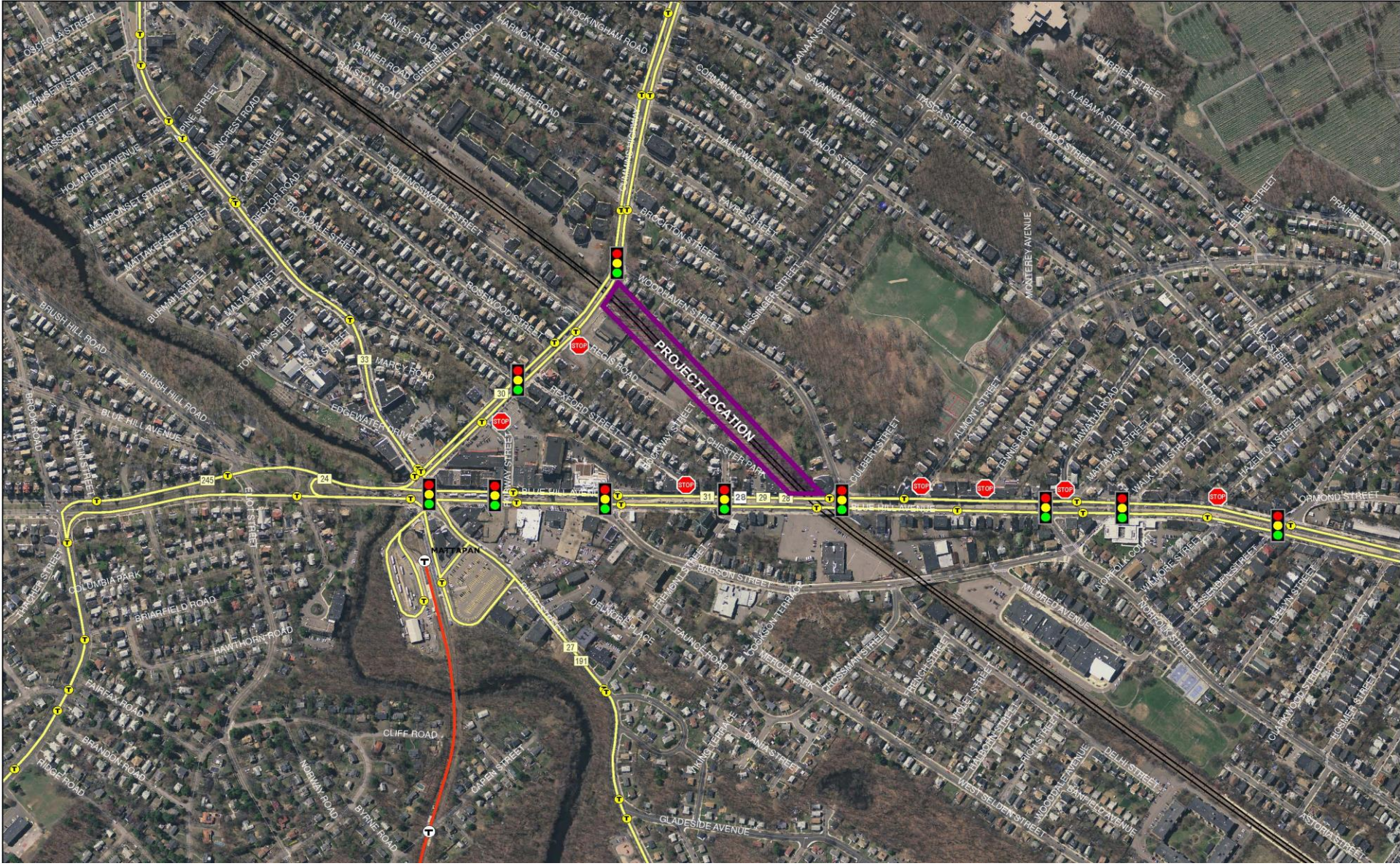


MASSACHUSETTS BAY
TRANSPORTATION AUTHORITY



Blue Hill Avenue / Cummins Highway Station

Fairmount Corridor Improvements Project



Limits of Off-Site Mitigations



MASSACHUSETTS BAY
TRANSPORTATION AUTHORITY



Blue Hill Avenue / Cummins Highway Station

Fairmount Corridor Improvements Project

1. Complete additional traffic counts at the following intersections:
 - Mattapan Square (Blue Hill Avenue and River Street/Cummins Highway); and
 - Blue Hill Avenue and Babson Street;
2. Install new traffic cabinets at the following locations:
 - Cummins Highway and Woodhaven Street; and
 - Cummins Highway and Rockdale Street;
3. Install pedestrian crossing signals on Cummins Highway;
4. Install System Loop Detectors on Blue Hill Avenue and Cummins Highway;
5. Install video Cameras at Mattapan Square and connect to existing MBTA Communication Room at the Red Line station;
6. Connect Mattapan Square with Wellington Hill Street intersection utilizing the existing interconnect cable system. Due to the age of the existing cable system, we may have to replace the cabling (total of 4,500 linear feet or any portion) depending on conditions;
7. Install new communication technologies to link Cummins Highway and Blue Hill Avenue with City Hall;
8. Complete field assessment and evaluation of existing equipment and cables;
9. Continue Coordination between the MBTA and the City of Boston;
10. Update the Traffic Study to include the additional locations and complete additional analysis; and
11. Prepare Design Documents and timing plans as required by BTB and the MBTA.
12. Further discussion will continue between the City, the community, and the MBTA regarding parking regulations on residential streets, adjacent to the station.

Proposed Off-Site Mitigations

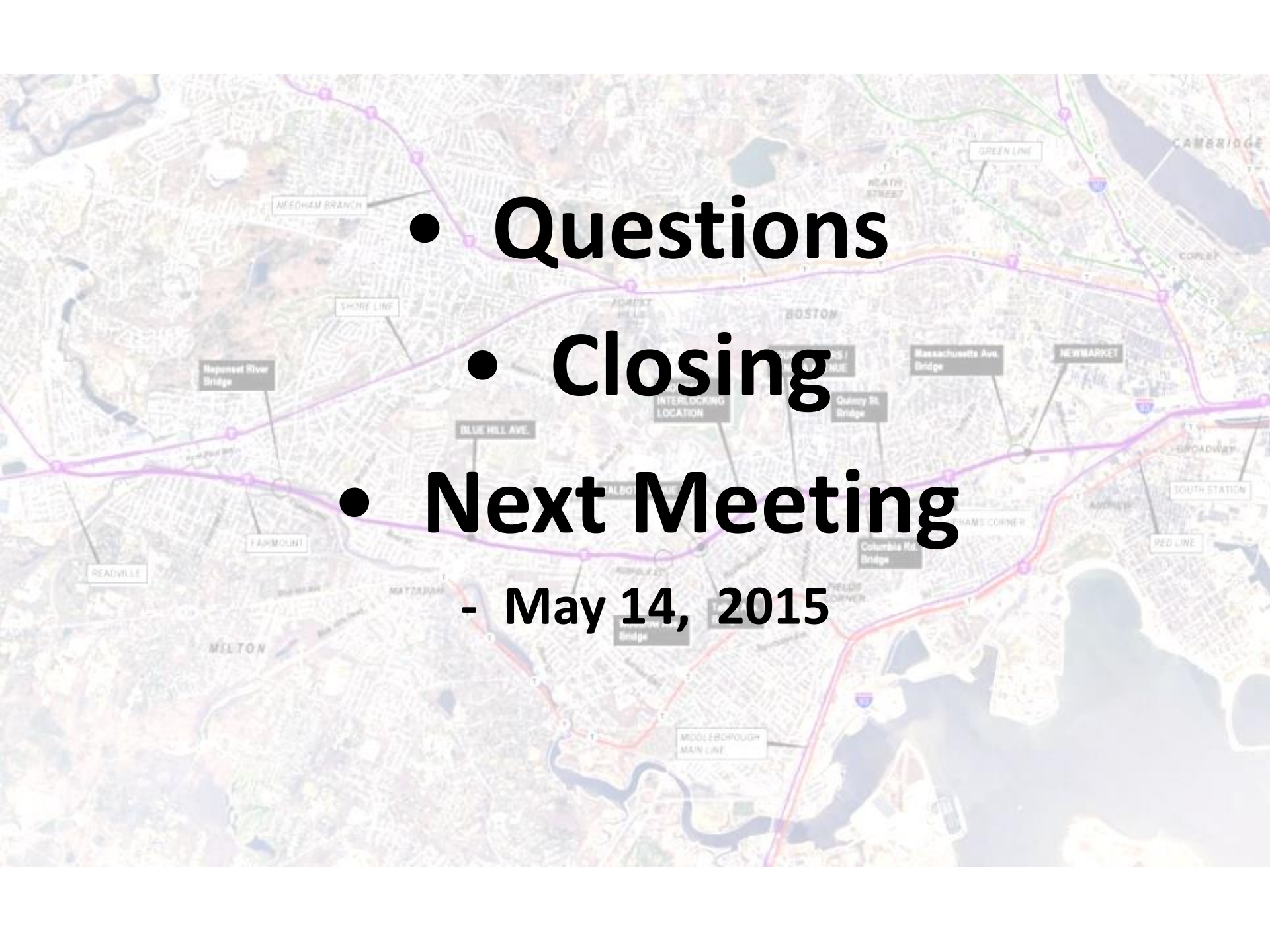


MASSACHUSETTS BAY
TRANSPORTATION AUTHORITY



Blue Hill Avenue / Cummins Highway Station

Fairmount Corridor Improvements Project

- 
- Questions
 - Closing
 - Next Meeting
- May 14, 2015